

SAMSUNG

TFT-LCD MONITOR

GY17HS*
GY17HSS*
GY17HSG*

SERVICE *Manual*

TFT-LCD MONITOR



CONTENTS

1. Precautions
2. Product Specifications
3. Disassembly & Reassembly
4. Alignments & Adjustments
5. Troubleshooting
6. Exploded View & Parts List
7. Electrical Parts List
8. Block Diagram
9. Wiring Diagram
10. PCB Layout
11. Schematic Diagrams
12. Panel Description

1 Precautions

Follow these safety, servicing and ESD precautions to prevent damage and to protect against potential hazards such as electrical shock.

1-1 Safety Precautions

1-1-1 Warnings

1. For continued safety, do not attempt to modify the circuit board.
2. Disconnect the AC power and DC power jack before servicing.

1-1-2 Servicing the LCD Monitor

1. When servicing the LCD Monitor, Disconnect the AC line cord from the AC outlet.
2. It is essential that service technicians have an accurate voltage meter available at all times. Check the calibration of this meter periodically.

1-1-3 Fire and Shock Hazard

Before returning the monitor to the user, perform the following safety checks:

1. Inspect each lead dress to make certain that the leads are not pinched or that hardware is not lodged between the chassis and other metal parts in the monitor.
2. Inspect all protective devices such as nonmetallic control knobs, insulating materials, cabinet backs, adjustment and compartment covers or shields, isolation resistor-capacitor networks, mechanical insulators, etc.
3. Leakage Current Hot Check (Figure 1-1):

WARNING:

Do not use an isolation transformer during this test.

Use a leakage current tester or a metering system that complies with American National Standards Institute (*ANSI C101.1, Leakage Current for Appliances*), and Underwriters Laboratories (*UL Publication UL1410, 59.7*).

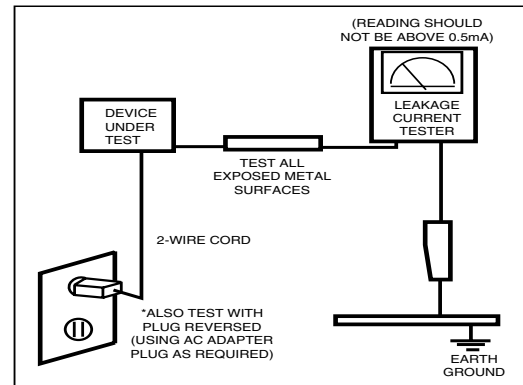


Figure 1-1. Leakage Current Test Circuit

4. With the unit completely reassembled, plug the AC line cord directly into a 120V AC outlet. With the unit's AC switch first in the ON position and then OFF, measure the current between a known earth ground (metal water pipe, conduit, etc.) and all exposed metal parts, including: metal cabinets, screwheads and control shafts. The current measured should not exceed 0.5 milliamp. Reverse the power-plug prongs in the AC outlet and repeat the test.

1-1-4 Product Safety Notices

Some electrical and mechanical parts have special safety-related characteristics which are often not evident from visual inspection. The protection they give may not be obtained by replacing them with components rated for higher voltage, wattage, etc. Parts that have special safety characteristics are identified by ⚠ on schematics and parts lists. A substitute replacement that does not have the same safety characteristics as the recommended replacement part might create shock, fire and/or other hazards. Product safety is under review continuously and new instructions are issued whenever appropriate.

1-2 Servicing Precautions

WARNING: An electrolytic capacitor installed with the wrong polarity might explode.

Caution: Before servicing units covered by this service manual, read and follow the Safety Precautions section of this manual.

Note: If unforeseen circumstances create conflict between the following servicing precautions and any of the safety precautions, always follow the safety precautions.

1-2-1 General Servicing Precautions

1. Always unplug the unit's AC power cord from the AC power source and disconnect the DC Power Jack before attempting to:
 - (a) remove or reinstall any component or assembly,
 - (b) disconnect PCB plugs or connectors, (c) connect a test component in parallel with an electrolytic capacitor.
2. Some components are raised above the printed circuit board for safety. An insulation tube or tape is sometimes used. The internal wiring is sometimes clamped to prevent contact with thermally hot components. Reinstall all such elements to their original position.
3. After servicing, always check that the screws, components and wiring have been correctly reinstalled. Make sure that the area around the serviced part has not been damaged.
4. Check the insulation between the blades of the AC plug and accessible conductive parts (examples: metal panels, input terminals and earphone jacks).
5. Insulation Checking Procedure: Disconnect the power cord from the AC source and turn the power switch ON. Connect an insulation resistance meter (500 V) to the blades of the AC plug.
The insulation resistance between each blade of the AC plug and accessible conductive parts (see above) should be greater than 1 megohm.
6. Always connect a test instrument's ground lead to the instrument chassis ground before connecting the positive lead; always remove the instrument's ground lead last.

1-3 Electrostatically Sensitive Devices (ESD) Precautions

Some semiconductor (solid state) devices can be easily damaged by static electricity. Such components are commonly called Electrostatically Sensitive Devices (ESD). Examples of typical ESD are integrated circuits and some field-effect transistors. The following techniques will reduce the incidence of component damage caused by static electricity.

1. Immediately before handling any semiconductor components or assemblies, drain the electrostatic charge from your body by touching a known earth ground. Alternatively, wear a discharging wrist-strap device. To avoid a shock hazard, be sure to remove the wrist strap before applying power to the monitor.
2. After removing an ESD-equipped assembly, place it on a conductive surface such as aluminum foil to prevent accumulation of an electrostatic charge.
3. Do not use freon-propelled chemicals. These can generate electrical charges sufficient to damage ESDs.
4. Use only a grounded-tip soldering iron to solder or desolder ESDs.
5. Use only an anti-static solder removal device. Some solder removal devices not classified as "anti-static" can generate electrical charges sufficient to damage ESDs.
6. Do not remove a replacement ESD from its protective package until you are ready to install it. Most replacement ESDs are packaged with leads that are electrically shorted together by conductive foam, aluminum foil or other conductive materials.
7. Immediately before removing the protective material from the leads of a replacement ESD, touch the protective material to the chassis or circuit assembly into which the device will be installed.
Caution: Be sure no power is applied to the chassis or circuit and observe all other safety precautions.
8. Minimize body motions when handling unpackaged replacement ESDs. Motions such as brushing clothes together, or lifting your foot from a carpeted floor can generate enough static electricity to damage an ESD.

2 Product Specifications

2-1 Specifications

Item	Description		
	GY17HS*	GY17HSS*	GY17HSG*
LCD Panel	TFT-LCD panel, RGB vertical stripe, normally black transmissive, 17-Inch viewable, 0.264 (H) x 0.264 (V) mm pixel pitch		
Scanning Frequency	Horizontal : 30 kHz ~ 81 kHz (Automatic) Vertical : 56 Hz ~ 75 Hz		
Display Colors	16.2 Million colors		
Maximum Resolution	1280 Pixels 1024 Pixels		
Input Video Signal	Analog, 0.714 Vp-p ± 5% positive at 75 Ω, internally terminated		
Input Sync Signal	Type : Separate H/V sync, Composite H/V Level : TTL level (V high ≥ 2.0 V, V low ≤ 0.8 V), Sync-on-Green (≤ -0.25 V)		
Maximum Pixel Clock rate	135 MHz		
Active Display Horizontal/Vertical	338 ± 3 mm / 270 ± 3 mm		
AC power voltage & Frequency	AC 90 ~ 264 Volts (50/60 Hz ± 3 Hz)		
Power Consumption	42 W (max), 40W (normal)		
Dimensions Unit (W x D x H) Carton (W x D x H) Package	15.1 x 2.6 x 13.3 Inches (384.6 x 66.7x 338.0 mm) State of stand disassembled 15.1 x 7.9 x 15.5 Inches (384.6 x 201.0 x 392.8 mm) State of stand folded 18.9 x 9.3 x 18.3 Inches (480 x 237 x 465 mm)		
Weight (Net/Gross)	6.2 kg (13.7 lbs) / 7.7 kg (17.0 lbs)	6.0 kg (13.2 lbs) / 7.5 kg (16.5 lbs)	5.4 kg (11.9 lbs) / 6.6 kg (14.6 lbs)
Environmental Considerations	Operating Temperature : 50°F ~ 104°F (10°C ~ 40°C) Operating Humidity : 10 % ~ 80 % Storage Temperature : -13°F ~ 113°F (-25°C ~ 45°C) Storage Humidity : 5 % ~ 95 %		
<ul style="list-style-type: none"> • GY17HS*/GY17HSS*/GY17HSG* complies with SWEDAC (MPRII) recommendations for reduced electromagnetic fields. • Designs and specifications are subject to change without prior notice. • GY17HS* - TOUCH SCREEN / GY17HSS* - strengthening glass / GY17HSG* - NORMAL 			

2-2 Pin Assignments

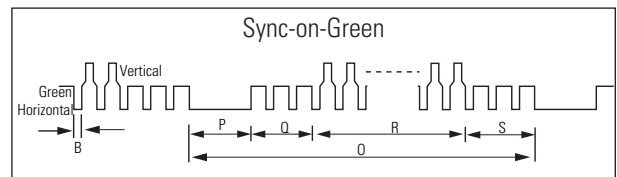
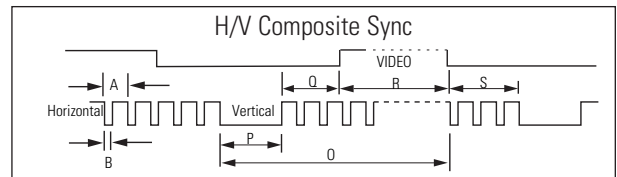
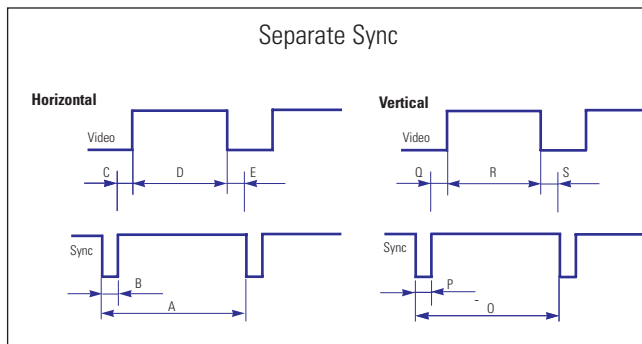
Pin No.	Sync Type	15-Pin D-Sub Signal Cable Connector		
		Separate	Composite	Sync-on-green
1		Red	Red	Red
2		Green	Green	Green + H/V Sync.
3		Blue	Blue	Blue
4		GND	GND	GND
5		DDC Return (GND)	DDC Return (GND)	DDC Return (GND)
6		GND-R	GND-R	GND-R
7		GND-G	GND-G	GND-G
8		GND-B	GND-B	GND-B
9		DDC Power Input (+5V)	DDC Power Input (+5V)	DDC Power Input (+5V)
10		Self Raster	Self Raster	Self Raster
11		GND	GND	GND
12		Bi-Dr Data (SDA)	Bi-Dr Data (SDA)	Bi-Dr Data (SDA)
13		H-Sync.	H/V-Sync.	Not Used
14		V-Sync.	Not Used	Not Used
15		DDC Clock (SCL)	DDC Clock (SCL)	DDC Clock (SCL)

2-3 Timing Chart

This section of the service manual describes the timing that the computer industry recognizes as standard for computer-generated video signals.

Table 2-1 Timing Chart

Mode Timing	IBM		VESA					VESA	
	VGA2/ 70 Hz 720 x 400	VGA3/ 60 Hz 640 x 480	640/75 Hz 640 x 480	800/60 Hz 800 x 600	800/75 Hz 800 x 600	1024/60 Hz 1024 x 768	1024/75 Hz 1024 x 768	1280/60 Hz 1280 x 1024	1280/75 Hz 1280 x 1024
fH (kHz)	31.469	31.469	37.500	37.879	46.875	48.363	60.023	63.981	79.975
A μsec	31.777	31.778	26.667	26.400	21.333	20.677	16.660	11.852	12.504
B μsec	3.813	3.813	2.032	3.200	1.616	2.092	1.219	1.037	1.067
C μsec	1.589	1.589	3.810	2.200	3.232	2.462	2.235	2.296	1.837
D μsec	26.058	26.058	20.317	20.000	16.162	15.754	13.003	9.259	9.481
E μsec	0.318	0.318	0.508	0.000	0.323	0.369	0.203	0.000	0.119
fV (Hz)	70.087	59.940	75.000	60.317	75.000	60.004	75.029	60.020	75.025
O msec	14.268	16.683	13.333	16.579	13.333	16.666	13.328	16.005	13.329
P msec	0.064	0.064	0.080	0.106	0.064	0.124	0.050	0.047	0.038
Q msec	0.858	0.794	0.427	0.607	0.448	0.600	0.466	0.594	0.475
R msec	13.155	15.761	12.800	15.840	12.800	15.880	12.795	15.630	12.804
S msec	0.191	0.064	0.027	0.0261	0.021	0.062	0.017	0.016	0.013
Clock Freq. (MHz)	28.322	26.175	31.500	40.000	49.500	75.000	78.750	108.000	135.000
Polarity H.Sync	Negative	Negative	Negative	Positive	Positive	Negative	Positive	Positive	Positive
V.Sync	Positive	Negative	Negative	Positive	Positive	Negative	Positive	Positive	Positive
Remark	Separate	Separate	Separate	Separate	Separate	Separate	Separate	Separate	Separate



A : Line time total	B : Horizontal sync width	O : Frame time total	P : Vertical sync width
C : Back porch	D : Active time	Q : Back porch	R : Active time
E : Front porch		S : Front porch	

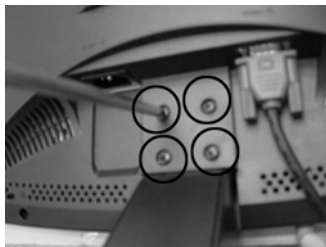
3 Disassembly and Reassembly

This section of the service manual describes the disassembly and reassembly procedures for the GY17HS*/GY17HSS*/GY17HSG* TFT-LCD monitors.

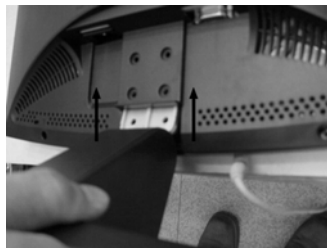
WARNING: This monitor contains electrostatically sensitive devices. Use caution when handling these components.

3-1-1 GY17HS*

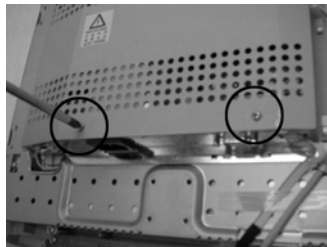
- Cautions: 1. Disconnect the monitor from the power source before disassembly.
2. Follow these directions carefully; never use metal instruments to pry apart the cabinet.
3. R/Cover opening jig : BH81-00001A



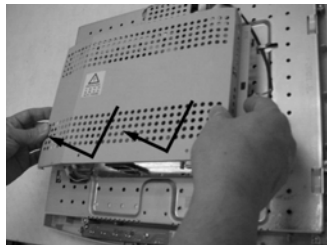
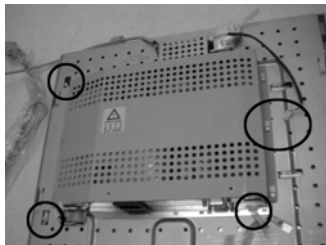
1. Place monitor face down on cushioned table. Remove 6 screws from grip on the stand and remove the stand.



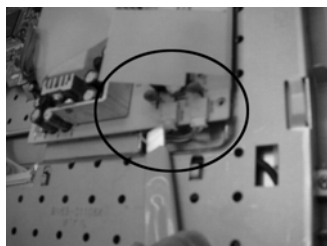
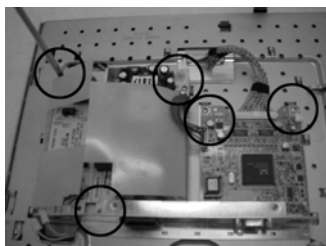
2. Disconnect the signal cable from the rear cover. Lift up the stand to remove the rear cover.



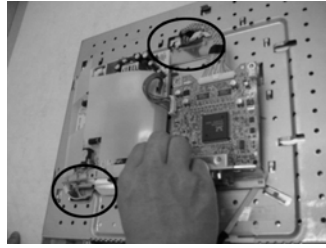
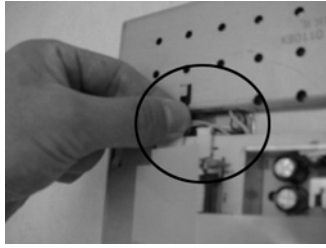
3. Lift up the rear cover and remove 2 screws from the shield.



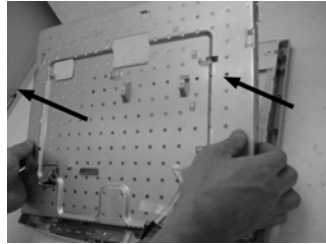
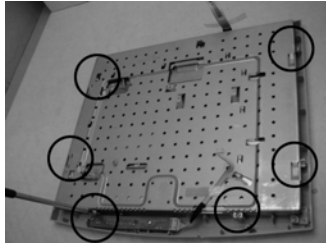
4. Disconnect zebra cable and function cable, inverter cable, touch power cable from the shield. Lift up the shield.
⚠ Caution : Cables may be easily damaged. Please use caution when removing shield cover.



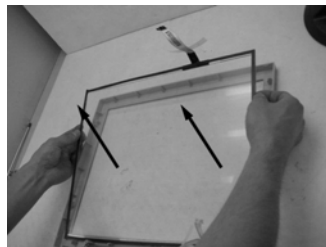
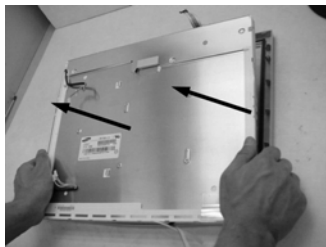
5. Remove 5 screws from the boards. Carefully remove the silicon glue on the inverter cable with a razor.
⚠ Caution : Lamp wire may be easily damaged. Please use caution when removing the silicon.



6. Disconnect inverter cables and LVDS cable from the boards.



7. Remove 6 screws from the panel and remove the panel shield.

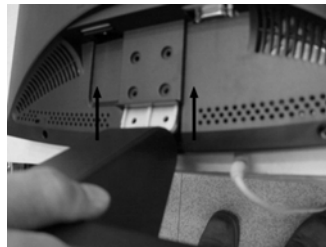


8. Disconnect panel from the cover front and disconnect touch screen from the cover front.

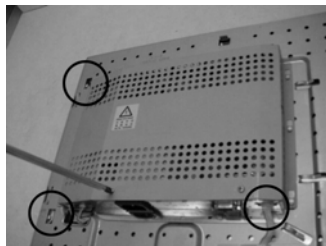
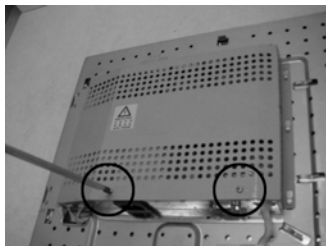
3-1-2 GY17HSS*



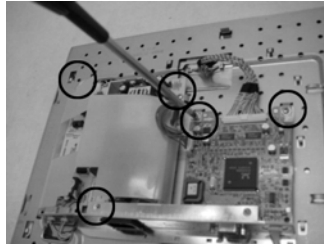
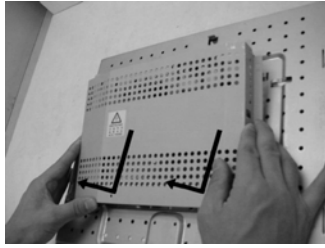
1. Place monitor face down on cushioned table. Remove 6 screws from grip on the stand and remove the stand.



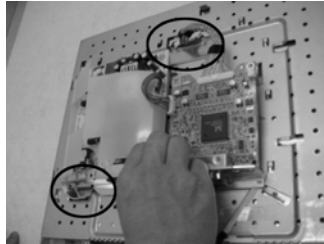
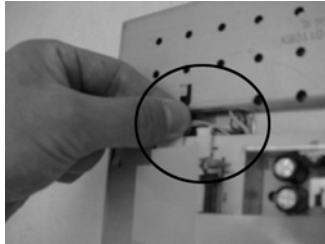
2. Disconnect the signal cable from the rear cover. Lift up the stand to remove the rear cover and lift up the rear cover.



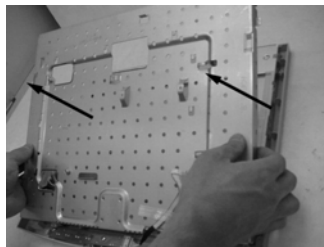
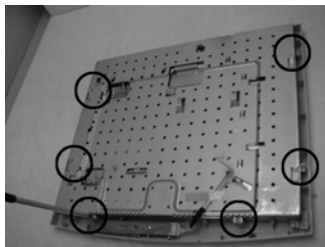
3. Remove 2 screws from the shield and disconnect function cable, inverter cable from the shield.



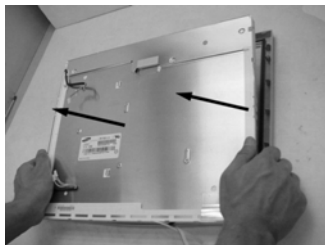
- Lift up the shield and remove 5 screws from the boards.



- Disconnect inverter cables and LVDS cable from the boards.



- Remove 6 screws from the panel and remove the panel shield.

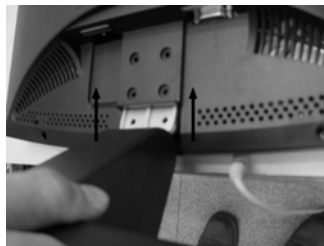


- Disconnect panel from the cover front and disconnect strengthening glass from the cover front.

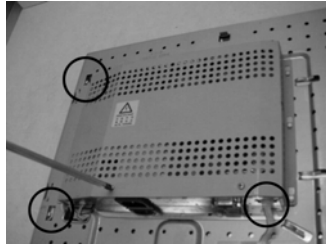
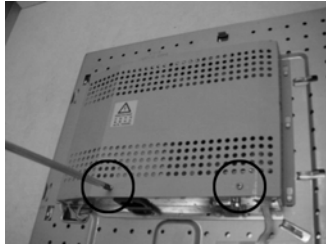
3-1-3 GY17HSG*



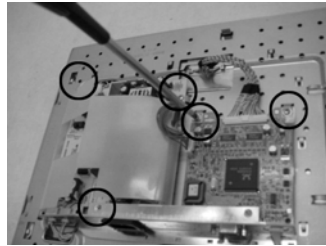
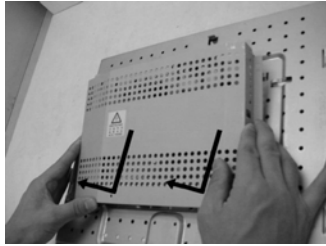
- Place monitor face down on cushioned table. Remove 6 screws from grip on the stand and remove the stand.



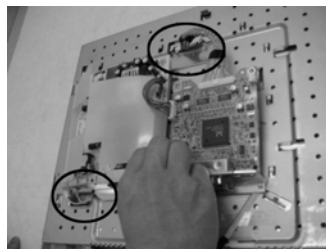
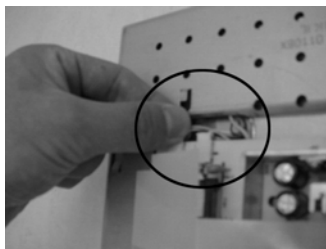
- Disconnect the signal cable from the rear cover. Lift up the stand to remove the rear cover and lift up the rear cover.



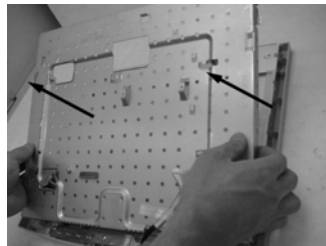
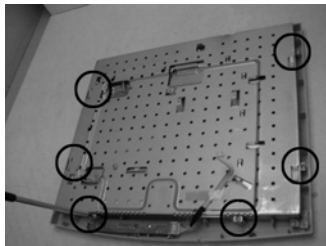
3. Remove 2 screws from the shield and disconnect function cable, inverter cable from the shield.



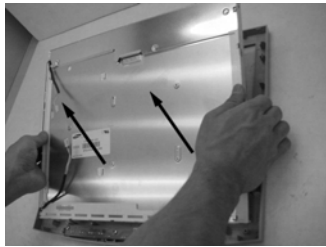
4. Lift up the shield and remove 5 screws from the boards.



5. Disconnect inverter cables and LVDS cable from the boards.



6. Remove 6 screws from the panel and remove the panel shield.



7. Disconnect panel from the cover front.

3-2 Reassembly

Reassembly procedures are in the reverse order of disassembly procedures.

4 Alignments and Adjustments

This section of the service manual explains how to use the RS232 JIG.
This function is needed for AD board change and program memory (IC110) change.

4-1 Required Equipment

The following equipment is necessary for adjusting the monitor:

- Computer with Windows 95, Windows 98, or Windows NT.
- MTI-2031 DDC MANAGER JIG

4-2 Automatic Color Adjustment

To input video, use 16 gray or any pattern using black and white.

1. Select english for OSD language.
2. Press the "Exit" key for 5 seconds.

4-3 DDC EDID Data Input

1. Input DDC EDID data when replacing AD PCB.
2. Receive/Download the proper DDC file for the model from HQ quality control department.
Install the below jig (Figure 1) and enter the data.

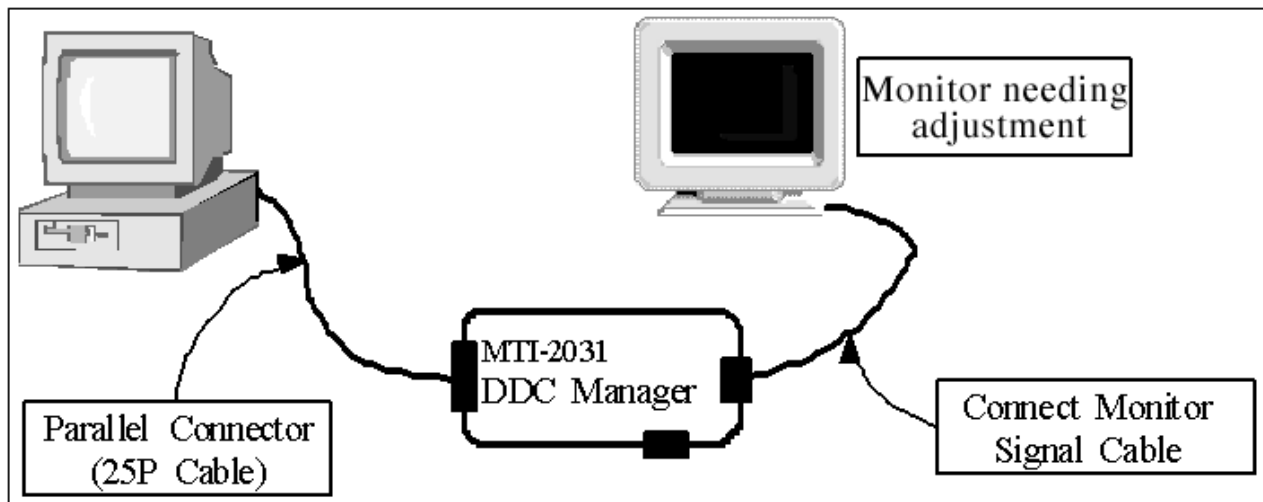


Figure 1.

4-4 OSD Adjustment When Replacing Panel

1. Adjust brightness and contrast to 0. Then, press the exit key for 5 second.
Service function OSD will appear on screen.
2. Press the + key to place the cursor on the panel. Press the menu key for 5 seconds.

4-5 OSD Adjustment When Replacing Lamp Only

1. Adjust brightness and contrast to 0. Then, press the exit key for 5 seconds.
Service function OSD will appear on the screen.
2. Press the + key. Select upper lamp and press the menu key for 5 seconds.
Then, select lower lamp and press the menu key for 5 seconds.

** Note : Please be sure to read the following instructions for details on service function.*

4-6 Service Function Spec.

4-6-1 How to Display Service Function OSD

1. The value for brightness and contrast should be changed to zero.
2. Within 5 seconds, press the exit key.
3. Service function OSD will be displayed.

* If you want to disable the service function OSD, you will have to power off.

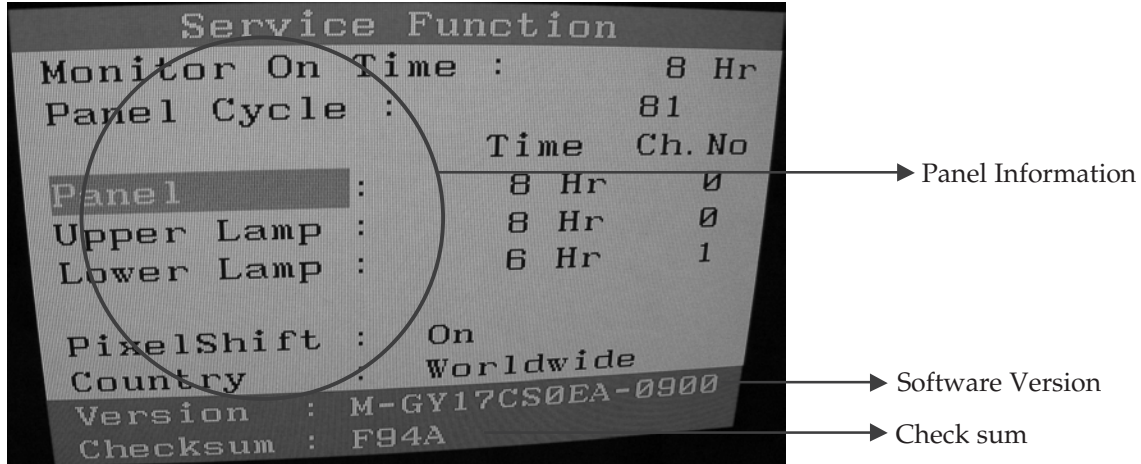


Figure 2. The example of service function OSD

The service function OSD is based on a grid of 29 columns x 12 rows.

The service function OSD consists of panel information, software version and MICOM check sum.

4-6-2 How to Control Service Function OSD

1. With the panel selected on OSD, whenever you press the right key, the base color will change to blue from "Panel" to "Country", "Pixel Shift", "Lower Lamp", "Upper Lamp".

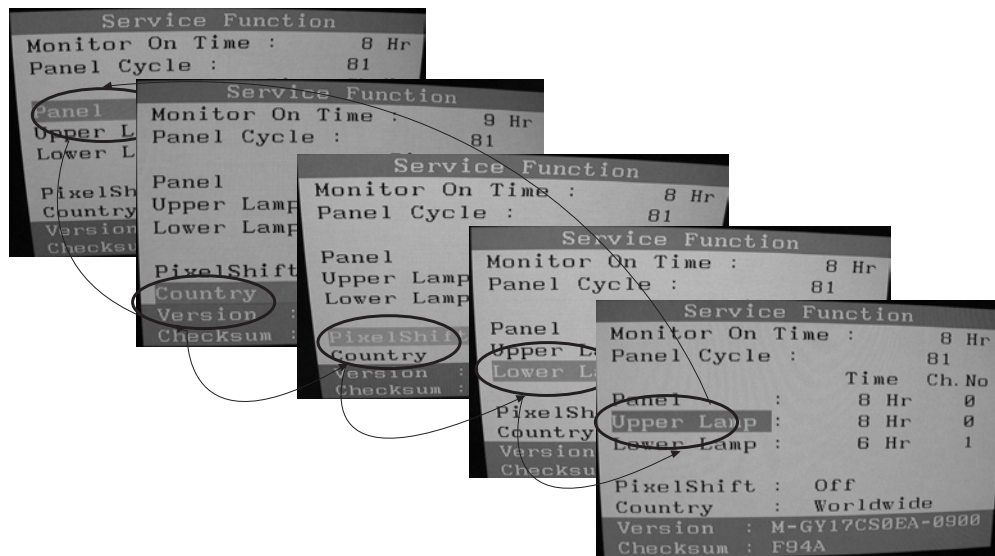


Figure 3.

4-6-3 How to Control Service Function OSD

- After change the panel or lamp, you must reset service function OSD.

- The case of panel change

After changing the panel, press the menu key within 5 seconds.

Then, panel Ch. No increases one step and the panel time information is reset to zero.

Simultaneously, other information is reset to zero (Upper/Lower lamp, Panel cycle).

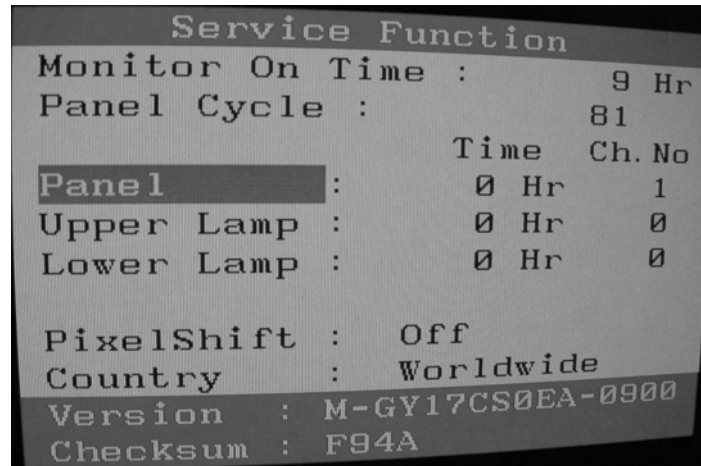


Figure 4.

4-6-4 How to Control Service Function OSD

- In the case of Upper Lamp or Lower Lamp change

After changing the Upper Lamp or Lower Lamp,

1. Select the Upper Lamp or Lower Lamp
2. Press the Menu key within an 5 seconds.

Then, Ch. No and time will be reset to zero (selected item only).

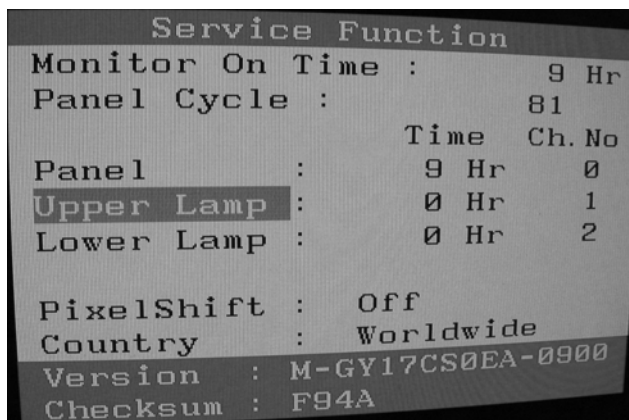


Figure 5.

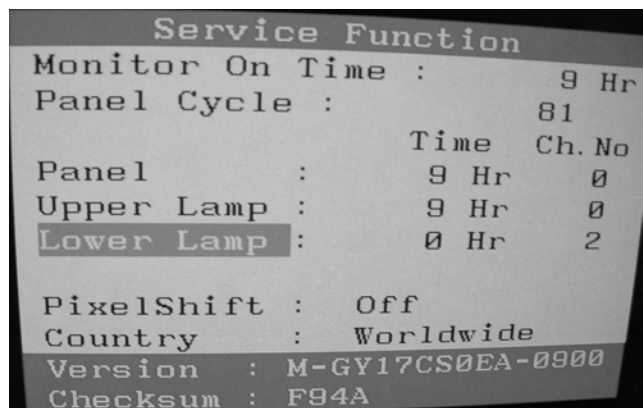


Figure 6.

4-6-5 Pixel shift and language selection change

* Note : Use the '-' key to vary values for new pixel shift and country menu.

1. Pixel shift : on → off

- When a same picture is displayed with no change for an extended period of time, this function prevents the display panel from image sticking.

* On for '0 x 01' with EEPROM 0x2E, Off for others; Always restart the monitor after EEPROM adjustment.

- Motion path : see Figure 7. One-step movement requires 4 minutes (total of 32 steps : 128 minutes)

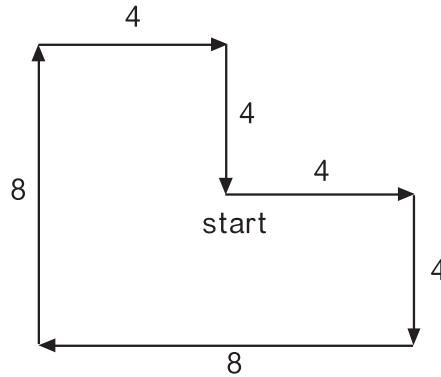


Figure 7.

- Location is reset.

- a) the monitor is restarted
- b) image mode is adjusted
- c) user adjusts a key

* Note : Pixel shift is not a available in service menu.

2. Country : Worldwide → Korean → Chinese → Japanese

- This function enables to select relevant OSD language for each region / country.

- Worldwide : 7 languages (English, German, Spanish, French, Italian, Swedish, Russian)
- Korean : 2 languages (Korean, English)
- Chinese : 2 languages (Simplified Chinese, English)
- Japanese : 2 languages (Japanese, English)

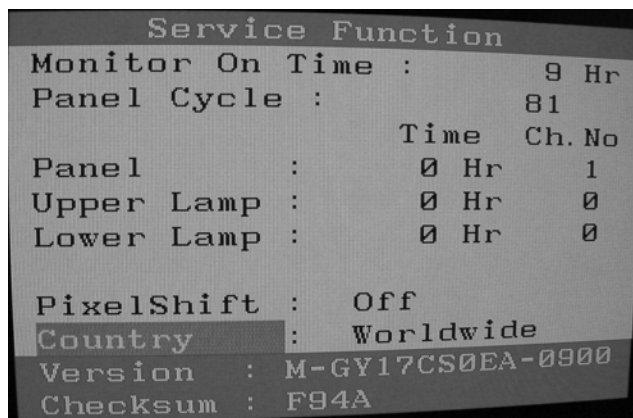


Figure 8.

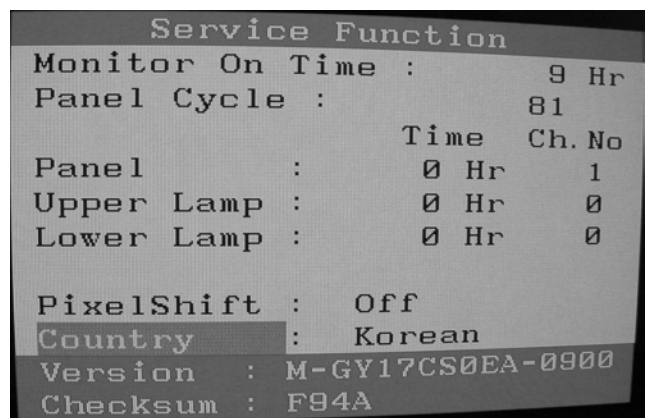


Figure 8-1.

```

Service Function
Monitor On Time :      9 Hr
Panel Cycle :         81
                        Time Ch.No
Panel      :          0 Hr   1
Upper Lamp :          0 Hr   0
Lower Lamp :          0 Hr   0

PixelShift : Off
Country    : Chinese
Version   : M-GY17CS0EA-0900
Checksum  : F94A

```

Figure 8-2.

```

Service Function
Monitor On Time :      9 Hr
Panel Cycle :         81
                        Time Ch.No
Panel      :          0 Hr   1
Upper Lamp :          0 Hr   0
Lower Lamp :          0 Hr   0

PixelShift : Off
Country    : Japanese
Version   : M-GY17CS0EA-0900
Checksum  : F94A

```

Figure 8-3.

```

Service Function
Monitor On Time :      9 Hr
Panel Cycle :         81
                        Time Ch.No
Panel      :          0 Hr   1
Upper Lamp :          0 Hr   0
Lower Lamp :          0 Hr   0

PixelShift : On
Country    : Worldwide
Version   : M-GY17CS0EA-0900
Checksum  : F94A

```

Figure 9.

```

Service Function
Monitor On Time :      8 Hr
Panel Cycle :         81
                        Time Ch.No
Panel      :          8 Hr   0
Upper Lamp :          8 Hr   0
Lower Lamp :          6 Hr   1

PixelShift : Off
Country    : Worldwide
Version   : M-GY17CS0EA-0900
Checksum  : F94A

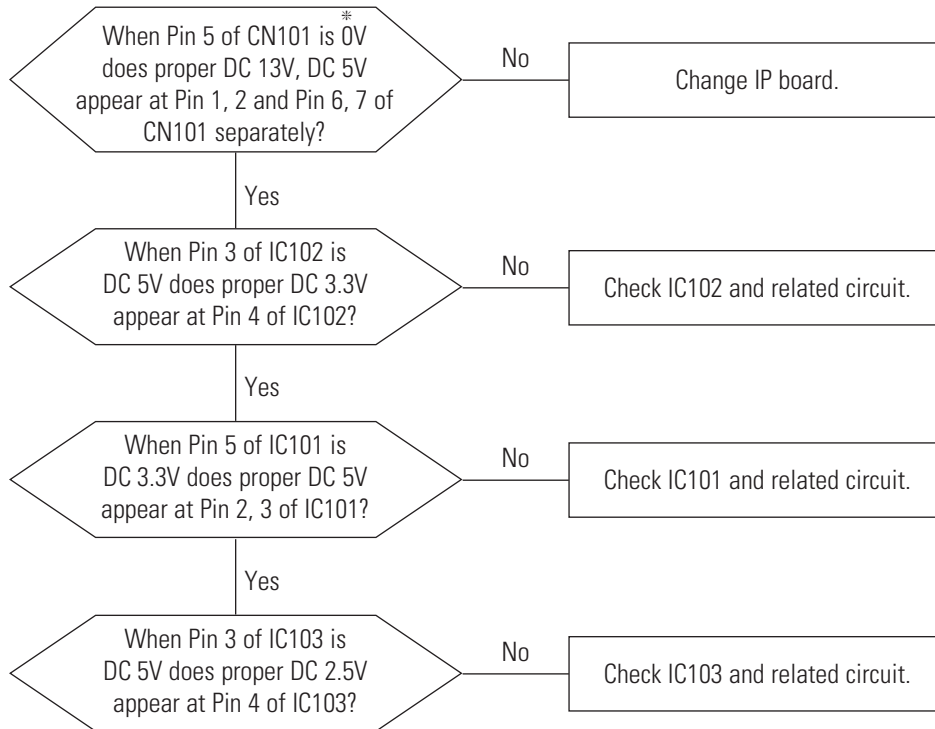
```

Figure 9-1.

5 Troubleshooting

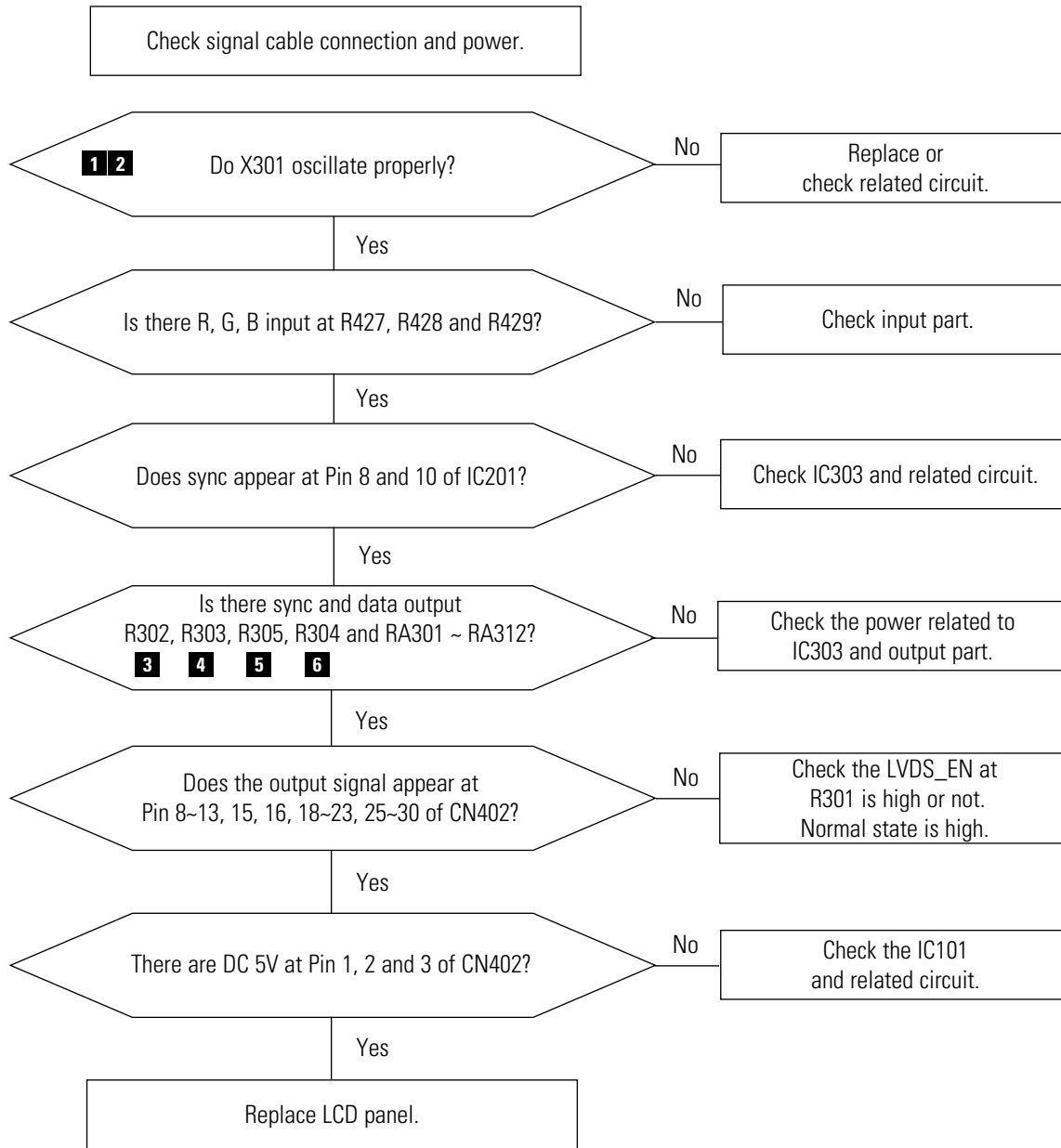
- Notes:**
- Before troubleshooting, setup the PC's display as below.
 - Resolution: 1280 x 1024
 - H-frequency: 64 kHz
 - V-frequency: 60 Hz
 - If no picture appears, make sure the power cord is correctly connected.
 - Check the following circuits.
 - No raster appears: SMPS PCB, Main PCB
 - 12V develop but no screen: Main PCB
 - 12V does not develop: SMPS PCB
 - If you push and hold the "EXIT" button for more than 5 seconds, the monitor automatically returns to the factory preset.

5-1 No Power

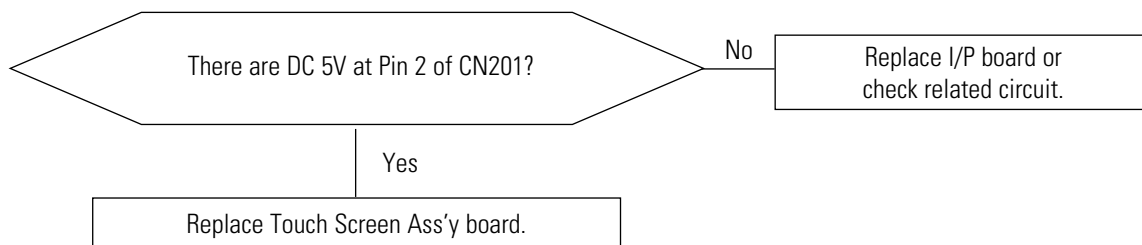


* 0V means power on state.

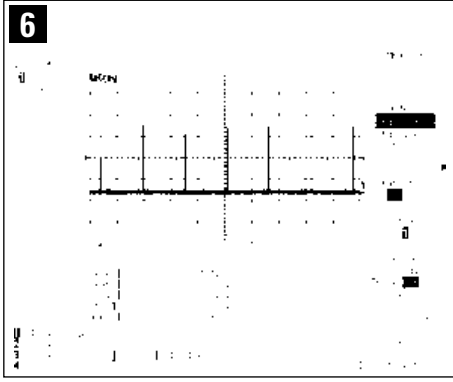
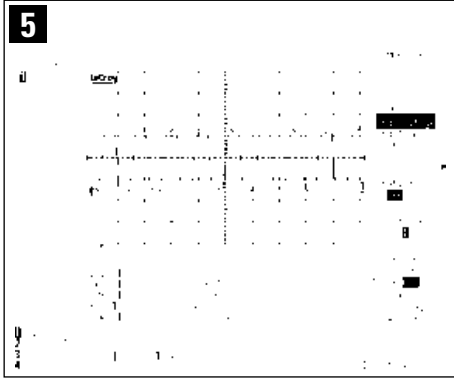
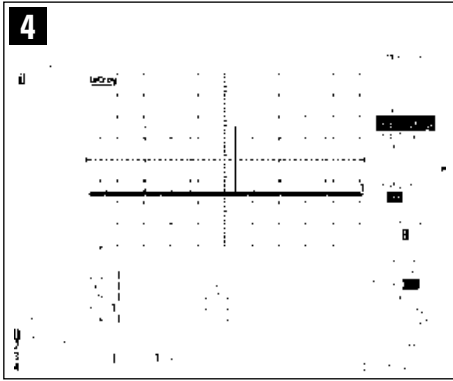
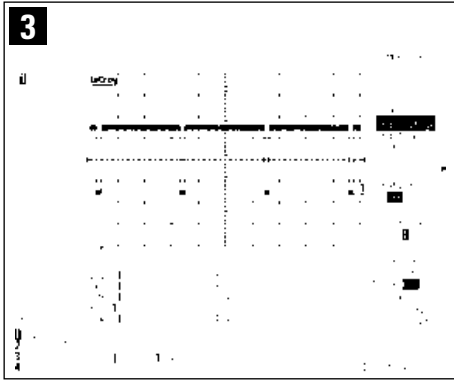
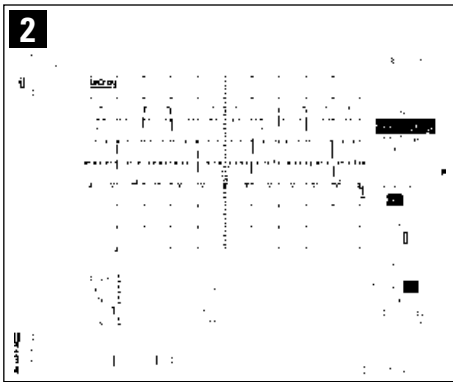
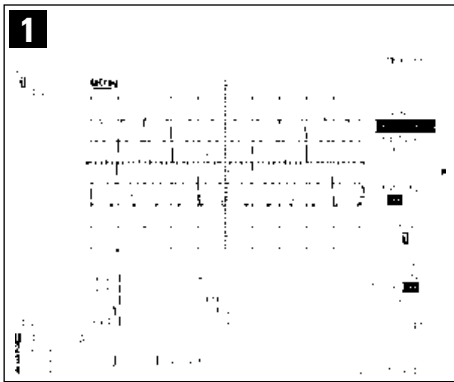
5-2 No Video



5-3 No Touch Screen (GY17HS*)



WAVEFORMS



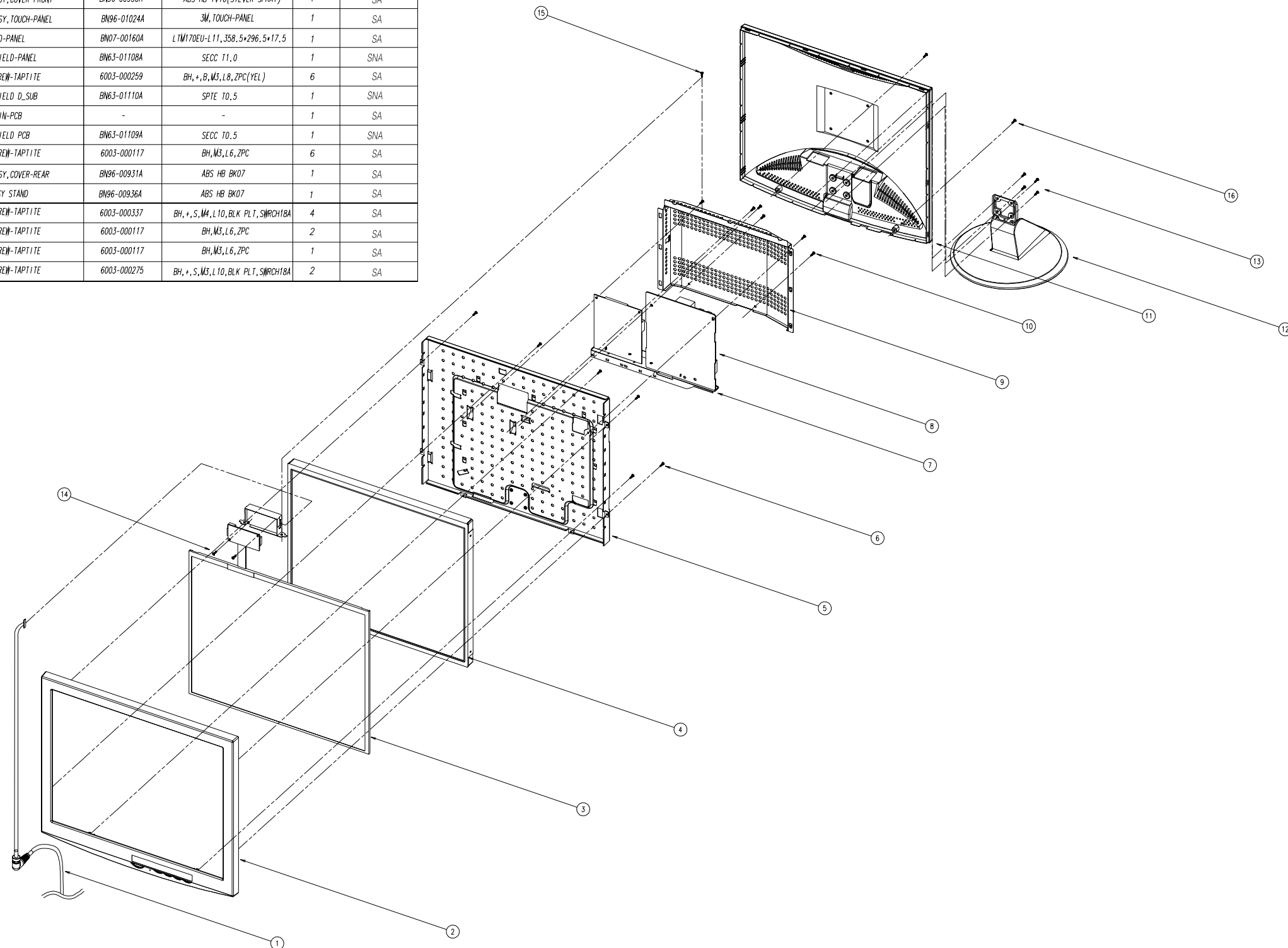
6 Exploded View and Parts List

* You can search for updated part codes through CMS web site.

URL : <http://itself.sec.samsung.co.kr/>

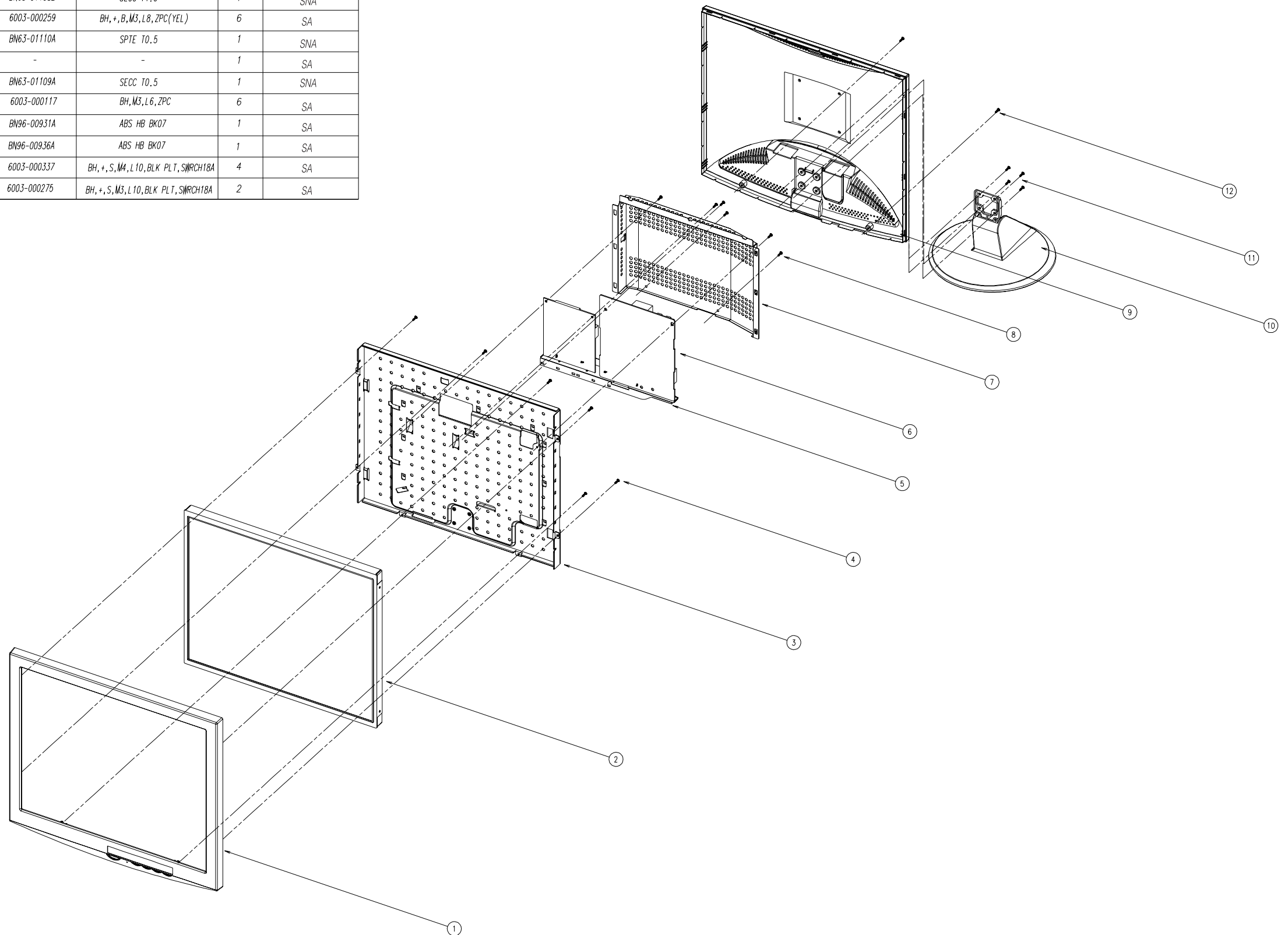
6-1 GY17HS*

No.	DESCRIPTION	CODE No.	SPECIFICATION	Q'ty	REMARK
1	ZEBRA-CABLE	BN39-00243E	UL244,UL154,Ø17,117mm,100V,2x,Ø-3.8[Ø],5100,Ø	1	SA
2	ASSY, COVER-FRONT	BN96-00930A	ABS HB 1V16(SILVER SPRAY)	1	SA
3	ASSY, TOUCH-PANEL	BN96-01024A	3M, TOUCH-PANEL	1	SA
4	LCD-PANEL	BN07-00160A	LTM170EU-L11, 358.5*296.5*17.5	1	SA
5	SHIELD-PANEL	BN63-01108A	SECC T1.0	1	SNA
6	SCREW-TAPTITE	6003-000259	BH,+,B,M3,L8,ZPC(YEL)	6	SA
7	SHIELD D.SUB	BN63-01110A	SPT E T0.5	1	SNA
8	MAIN-PCB	-	-	1	SA
9	SHIELD PCB	BN63-01109A	SECC T0.5	1	SNA
10	SCREW-TAPTITE	6003-000117	BH,M3,L6,ZPC	6	SA
11	ASSY, COVER-REAR	BN96-00931A	ABS HB BK07	1	SA
12	ASSY STAND	BN96-00936A	ABS HB BK07	1	SA
13	SCREW-TAPTITE	6003-000337	BH,+,S,M4,L10,BLK PLT, SWRCH18A	4	SA
14	SCREW-TAPTITE	6003-000117	BH,M3,L6,ZPC	2	SA
15	SCREW-TAPTITE	6003-000117	BH,M3,L6,ZPC	1	SA
16	SCREW-TAPTITE	6003-000275	BH,+,S,M3,L10,BLK PLT, SWRCH18A	2	SA



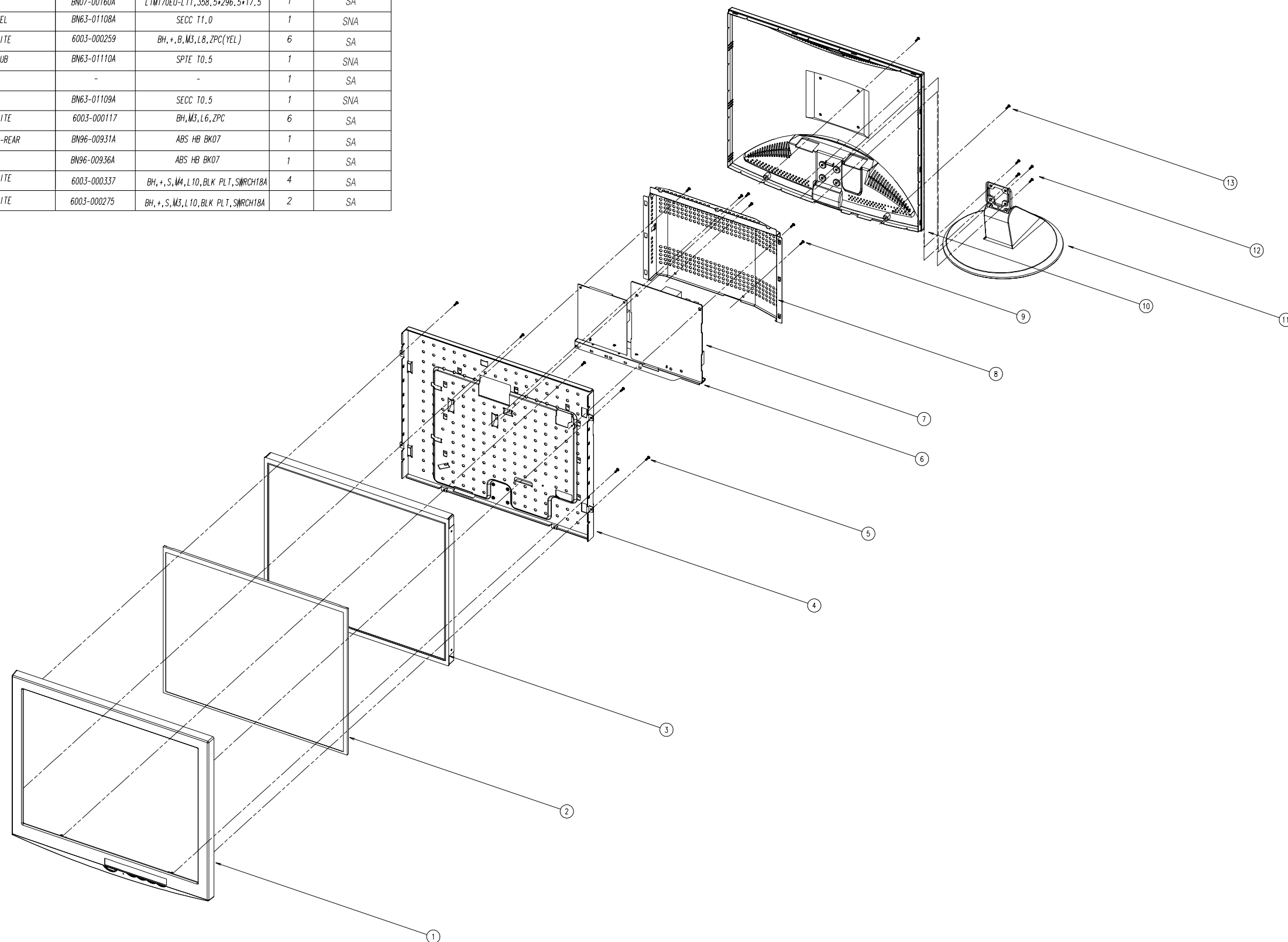
6-2 GY17HSS*

No.	DESCRIPTION	CODE No.	SPECIFICATION	Q'ty	REMARK
1	ASSY, COVER-FRONT	BN96-00930C	ABS HB 1V16 (SILVER SPRAY)	1	SA
2	LCD-PANEL	BN07-00160A	LTM170EU-L11, 358.5*296.5*17.5	1	SA
3	SHIELD-PANEL	BN63-01108B	SECC T1.0	1	SNA
4	SCREW-TAPTITE	6003-000259	BH,+,B,M3,L8,ZPC(YEL)	6	SA
5	SHIELD_D.SUB	BN63-01110A	SPTE T0.5	1	SNA
6	MAIN-PCB	-	-	1	SA
7	SHIELD PCB	BN63-01109A	SECC T0.5	1	SNA
8	SCREW-TAPTITE	6003-000117	BH,M3,L6,ZPC	6	SA
9	ASSY, COVER-REAR	BN96-00931A	ABS HB BK07	1	SA
10	ASSY STAND	BN96-00936A	ABS HB BK07	1	SA
11	SCREW-TAPTITE	6003-000337	BH,+,S,M4,L10,BLK PLT,SWRCH18A	4	SA
12	SCREW-TAPTITE	6003-000275	BH,+,S,M3,L10,BLK PLT,SWRCH18A	2	SA



6-3 GY17HSG*

No.	DESCRIPTION	CODE No.	SPECIFICATION	Q'ty	REMARK
1	ASSY, COVER-FRONT	BN96-00930B	ABS HB 1V16(SILVER SPRAY)	1	SA
2	ASSY MISC P-PROTECTION GLASS	BN96-00981A	PROTECTION GLASSEE, T3.0	1	SNA
3	LCD-PANEL	BN07-00160A	LTM170EU-L11,358.5*296.5*17.5	1	SA
4	SHIELD-PANEL	BN63-01108A	SECC T1.0	1	SNA
5	SCREW-TAPTITE	6003-000259	BH, +, B, M3, L8, ZPC(YEL)	6	SA
6	SHIELD D.SUB	BN63-01110A	SPTC T0.5	1	SNA
7	MAIN-PCB	-	-	1	SA
8	SHIELD PCB	BN63-01109A	SECC T0.5	1	SNA
9	SCREW-TAPTITE	6003-000117	BH, M3, L6, ZPC	6	SA
10	ASSY, COVER-REAR	BN96-00931A	ABS HB BK07	1	SA
11	ASSY STAND	BN96-00936A	ABS HB BK07	1	SA
12	SCREW-TAPTITE	6003-000337	BH, +, S, M4, L10, BLK PLT, SWRCH18A	4	SA
13	SCREW-TAPTITE	6003-000275	BH, +, S, M3, L10, BLK PLT, SWRCH18A	2	SA



7 Electrical Parts List

* You can search for updated part codes through ITSELF web site.

URL : <http://itself.sec.samsung.co.kr/>

7-1-1 GY17HS* Main PCB Parts

Level	Loc. No.	Code No.	Description	Specification	Remarks
0	GY17HSSSC/EDC				
1	E23-GY17HSSSC/EDC	-	1	SEC,LTM170EU-L11	-
3	BN94-00516F	-	ASSY PCB MAIN-E23	GY17HS	SA
4	0204-001527	CIS4	FLUX	DF-201TVS,MIX,0.820,FLUX13%,14KG	SNA
4	3711-004712	CN101	CONNECTOR-HEADER	BOX,9P,1R,2mm,STRAIGHT,SN	SA
4	3701-001219	CN102	CONNECTOR-DSUB	15P,3R,FEMALE,ANGLE,AUF	SA
4	3711-000056	CN201	CONNECTOR-HEADER	BOX,2P,1R,2.5mm,ANGLE,SN	SA
4	BN97-00348N	MICOM	ASSY MICOM	GY17HS	SNA
5	1107-001456	IC303	IC-FLASH MEMORY	39LV010,128Kx8,PLCC,32P,11.5x14mm,2.7/3.6V,0ta+70C	SA
5	BN82-00114A	CIS	A/S MICOM	GY17HS	SNA
4	BN97-00351X	-	ASSY SMD-E23	GY17HS	SNA
5	2703-001334	BD102	INDUCTOR-SMD	1.5uH,10%,2012	SA
5	2703-001334	BD103	INDUCTOR-SMD	1.5uH,10%,2012	SA
5	2703-001334	BD104	INDUCTOR-SMD	1.5uH,10%,2012	SA
5	2703-001334	BD105	INDUCTOR-SMD	1.5uH,10%,2012	SA
5	2703-001334	BD106	INDUCTOR-SMD	1.5uH,10%,2012	SA
5	2203-001402	C101	C-CER,CHIP	220nF,+80-20%,16V,Y5V,TP,1608	SA
5	2203-001402	C102	C-CER,CHIP	220nF,+80-20%,16V,Y5V,TP,1608	SA
5	2203-005005	C103	C-CER,CHIP	100nF,10%,16V,X7R,TP,1608	SA
5	2203-005437	C104	C-CER,CHIP	10000nF,+80-20%,10V,Y5V,TP,3216	SA
5	2402-000179	C105	C-AL,SMD	47uF,20%,16V,GP,TP,6.6x6.6x5.4	SA
5	2203-005005	C106	C-CER,CHIP	100nF,10%,16V,X7R,TP,1608	SA
5	2402-001042	C107	C-AL,SMD	100uF,20%,16V,GP,TP,6.6x6.6x5.4mm	SA
5	2203-005005	C108	C-CER,CHIP	100nF,10%,16V,X7R,TP,1608	SA
5	2203-005437	C109	C-CER,CHIP	10000nF,+80-20%,10V,Y5V,TP,3216	SA
5	2203-005005	C110	C-CER,CHIP	100nF,10%,16V,X7R,TP,1608	SA
5	2203-005005	C111	C-CER,CHIP	100nF,10%,16V,X7R,TP,1608	SA
5	2203-005005	C112	C-CER,CHIP	100nF,10%,16V,X7R,TP,1608	SA
5	2203-005005	C113	C-CER,CHIP	100nF,10%,16V,X7R,TP,1608	SA
5	2203-005005	C114	C-CER,CHIP	100nF,10%,16V,X7R,TP,1608	SA
5	2203-005005	C115	C-CER,CHIP	100nF,10%,16V,X7R,TP,1608	SA
5	2203-005005	C116	C-CER,CHIP	100nF,10%,16V,X7R,TP,1608	SA
5	2203-005005	C117	C-CER,CHIP	100nF,10%,16V,X7R,TP,1608	SA
5	2203-005005	C118	C-CER,CHIP	100nF,10%,16V,X7R,TP,1608	SA
5	2203-005437	C119	C-CER,CHIP	10000nF,+80-20%,10V,Y5V,TP,3216	SA
5	2203-005005	C120	C-CER,CHIP	100nF,10%,16V,X7R,TP,1608	SA
5	2203-005437	C121	C-CER,CHIP	10000nF,+80-20%,10V,Y5V,TP,3216	SA
5	2203-005005	C122	C-CER,CHIP	100nF,10%,16V,X7R,TP,1608	SA
5	2402-000176	C123	C-AL,SMD	10uF,20%,16V,GP,TP,4.3x4.3x5.4	SA
5	2203-005005	C125	C-CER,CHIP	100nF,10%,16V,X7R,TP,1608	SA
5	2203-005437	C126	C-CER,CHIP	10000nF,+80-20%,10V,Y5V,TP,3216	SA
5	2203-005005	C127	C-CER,CHIP	100nF,10%,16V,X7R,TP,1608	SA
5	2203-005005	C128	C-CER,CHIP	100nF,10%,16V,X7R,TP,1608	SA
5	2203-005005	C129	C-CER,CHIP	100nF,10%,16V,X7R,TP,1608	SA
5	2203-005005	C130	C-CER,CHIP	100nF,10%,16V,X7R,TP,1608	SA
5	2203-005005	C131	C-CER,CHIP	100nF,10%,16V,X7R,TP,1608	SA
5	2203-005005	C132	C-CER,CHIP	100nF,10%,16V,X7R,TP,1608	SA
5	2402-000179	C133	C-AL,SMD	47uF,20%,16V,GP,TP,6.6x6.6x5.4	SA
5	2203-005005	C134	C-CER,CHIP	100nF,10%,16V,X7R,TP,1608	SA
5	2203-005437	C135	C-CER,CHIP	10000nF,+80-20%,10V,Y5V,TP,3216	SA
5	2203-005437	C136	C-CER,CHIP	10000nF,+80-20%,10V,Y5V,TP,3216	SA
5	2203-005005	C137	C-CER,CHIP	100nF,10%,16V,X7R,TP,1608	SA
5	2203-005005	C138	C-CER,CHIP	100nF,10%,16V,X7R,TP,1608	SA
5	2203-005005	C139	C-CER,CHIP	100nF,10%,16V,X7R,TP,1608	SA
5	2203-005005	C140	C-CER,CHIP	100nF,10%,16V,X7R,TP,1608	SA
5	2203-005005	C141	C-CER,CHIP	100nF,10%,16V,X7R,TP,1608	SA
5	2203-005005	C142	C-CER,CHIP	100nF,10%,16V,X7R,TP,1608	SA
5	2203-005005	C143	C-CER,CHIP	100nF,10%,16V,X7R,TP,1608	SA
5	2203-005005	C144	C-CER,CHIP	100nF,10%,16V,X7R,TP,1608	SA
5	2203-005005	C145	C-CER,CHIP	100nF,10%,16V,X7R,TP,1608	SA
5	2203-005005	C146	C-CER,CHIP	100nF,10%,16V,X7R,TP,1608	SA
5	2203-005005	C147	C-CER,CHIP	100nF,10%,16V,X7R,TP,1608	SA
5	2203-005005	C148	C-CER,CHIP	100nF,10%,16V,X7R,TP,1608	SA
5	2203-005005	C149	C-CER,CHIP	100nF,10%,16V,X7R,TP,1608	SA
5	2203-005005	C150	C-CER,CHIP	100nF,10%,16V,X7R,TP,1608	SA

Level	Loc. No.	CodeNo.	Description	Specification	Remarks
5	2203-005005	C152	C-CER,CHIP	100nF,10%,16V,X7R,TP,1608	SA
5	2203-005005	C153	C-CER,CHIP	100nF,10%,16V,X7R,TP,1608	SA
5	2203-005005	C154	C-CER,CHIP	100nF,10%,16V,X7R,TP,1608	SA
5	2203-005005	C155	C-CER,CHIP	100nF,10%,16V,X7R,TP,1608	SA
5	2203-000440	C156	C-CER,CHIP	1nF,10%,50V,X7R,TP,1608,-	SA
5	2203-005005	C157	C-CER,CHIP	100nF,10%,16V,X7R,TP,1608	SA
5	2203-005005	C158	C-CER,CHIP	100nF,10%,16V,X7R,TP,1608	SA
5	2203-005005	C159	C-CER,CHIP	100nF,10%,16V,X7R,TP,1608	SA
5	2203-005005	C161	C-CER,CHIP	100nF,10%,16V,X7R,TP,1608	SA
5	2203-005005	C162	C-CER,CHIP	100nF,10%,16V,X7R,TP,1608	SA
5	2203-005005	C163	C-CER,CHIP	100nF,10%,16V,X7R,TP,1608	SA
5	2203-005005	C164	C-CER,CHIP	100nF,10%,16V,X7R,TP,1608	SA
5	2203-005437	C165	C-CER,CHIP	10000nF,+80-20%,10V,Y5V,TP,3216	SA
5	2203-005437	C166	C-CER,CHIP	10000nF,+80-20%,10V,Y5V,TP,3216	SA
5	2203-005437	C167	C-CER,CHIP	10000nF,+80-20%,10V,Y5V,TP,3216	SA
5	2007-000090	C169	R-CHIP	10Kohm,5%,1/10W,TP,1608	SA
5	2203-000491	C170	C-CER,CHIP	2.2nF,10%,50V,X7R,TP,1608,-	SA
5	2203-005005	C171	C-CER,CHIP	100nF,10%,16V,X7R,TP,1608	SA
5	2203-005437	C172	C-CER,CHIP	10000nF,+80-20%,10V,Y5V,TP,3216	SA
5	2203-005437	C201	C-CER,CHIP	10000nF,+80-20%,10V,Y5V,TP,3216	SA
5	2203-000189	C202	C-CER,CHIP	100nF,+80-20%,25V,Y5V,TP,1608,	SA
5	2203-005005	C203	C-CER,CHIP	100nF,10%,16V,X7R,TP,1608	SA
5	2203-000236	C204	C-CER,CHIP	0.1nF,5%,50V,COG,TP,1608	SA
5	2203-000998	C205	C-CER,CHIP	0.047nF,5%,50V,COG,TP,1608	SA
5	2203-000236	C206	C-CER,CHIP	0.1nF,5%,50V,COG,TP,1608	SA
5	2203-005005	C207	C-CER,CHIP	100nF,10%,16V,X7R,TP,1608	SA
5	2203-005005	C208	C-CER,CHIP	100nF,10%,16V,X7R,TP,1608	SA
5	2203-005005	C209	C-CER,CHIP	100nF,10%,16V,X7R,TP,1608	SA
5	2203-005437	C214	C-CER,CHIP	10000nF,+80-20%,10V,Y5V,TP,3216	SA
5	2203-005005	C215	C-CER,CHIP	100nF,10%,16V,X7R,TP,1608	SA
5	2203-000626	C302	C-CER,CHIP	0.022nF,5%,50V,COG,TP,1608	SA
5	2203-000626	C303	C-CER,CHIP	0.022nF,5%,50V,COG,TP,1608	SA
5	2203-000384	C304	C-CER,CHIP	0.015nF,5%,50V,COG,TP,1608	SA
5	2203-000384	C305	C-CER,CHIP	0.015nF,5%,50V,COG,TP,1608	SA
5	2203-005437	C309	C-CER,CHIP	10000nF,+80-20%,10V,Y5V,TP,3216	SA
5	2203-000626	C310	C-CER,CHIP	0.022nF,5%,50V,COG,TP,1608	SA
5	2203-005005	C311	C-CER,CHIP	100nF,10%,16V,X7R,TP,1608	SA
5	2203-005005	C312	C-CER,CHIP	100nF,10%,16V,X7R,TP,1608	SA
5	2203-000626	C313	C-CER,CHIP	0.022nF,5%,50V,COG,TP,1608	SA
5	2203-005437	C316	C-CER,CHIP	10000nF,+80-20%,10V,Y5V,TP,3216	SA
5	2203-005005	C317	C-CER,CHIP	100nF,10%,16V,X7R,TP,1608	SA
5	2203-000257	C318	C-CER,CHIP	10nF,10%,50V,X7R,TP,1608	SA
5	2203-005437	C319	C-CER,CHIP	10000nF,+80-20%,10V,Y5V,TP,3216	SA
5	2203-005437	C401	C-CER,CHIP	10000nF,+80-20%,10V,Y5V,TP,3216	SA
5	2203-005005	C402	C-CER,CHIP	100nF,10%,16V,X7R,TP,1608	SA
5	2203-005005	C403	C-CER,CHIP	100nF,10%,16V,X7R,TP,1608	SA
5	2203-005005	C404	C-CER,CHIP	100nF,10%,16V,X7R,TP,1608	SA
5	2203-005005	C405	C-CER,CHIP	100nF,10%,16V,X7R,TP,1608	SA
5	2203-001652	C406	C-CER,CHIP	470nF,+80-20%,16V,Y5V,TP,1608	SA
5	2402-001042	C407	C-AL,SMD	100uF,20%,16V,GP,TP,6.6x6.6x5.4mm	SA
5	2203-005005	C408	C-CER,CHIP	100nF,10%,16V,X7R,TP,1608	SA
5	2203-001652	C409	C-CER,CHIP	470nF,+80-20%,16V,Y5V,TP,1608	SA
5	2203-005437	C410	C-CER,CHIP	10000nF,+80-20%,10V,Y5V,TP,3216	SA
5	2203-005005	C411	C-CER,CHIP	100nF,10%,16V,X7R,TP,1608	SA
5	2203-005005	C412	C-CER,CHIP	100nF,10%,16V,X7R,TP,1608	SA
5	2203-005005	C413	C-CER,CHIP	100nF,10%,16V,X7R,TP,1608	SA
5	2203-005005	C414	C-CER,CHIP	100nF,10%,16V,X7R,TP,1608	SA
5	2203-005005	C415	C-CER,CHIP	100nF,10%,16V,X7R,TP,1608	SA
5	2203-005005	C421	C-CER,CHIP	100nF,10%,16V,X7R,TP,1608	SA
5	3711-005499	CN401	CONNECTOR-HEADER	BOX,8P,1R,1.25mm,SMD-A,SnPb,IVR	SA
5	3711-005470	CN402	CONNECTOR-HEADER	BOX,30P,1R,1.25mm,SMD-A,Sn+Pb,IVR	SA
5	0403-001435	D101	DIODE-ZENER	QZX363C5V6,5.32-5.88V,200MW,SOT-363,TP	SA
5	0403-001435	D102	DIODE-ZENER	QZX363C5V6,5.32-5.88V,200MW,SOT-363,TP	SA
5	0403-000579	D201	DIODE-ZENER	BZX84C5V1,4.8-5.4V,200MW,SOT-23,TP	SA
5	0403-000579	D202	DIODE-ZENER	BZX84C5V1,4.8-5.4V,200MW,SOT-23,TP	SA
5	0403-000579	D203	DIODE-ZENER	BZX84C5V1,4.8-5.4V,200MW,SOT-23,TP	SA
5	0401-001056	D204	DIODE-SWITCHING	MMBD4148SE,100V,200MA,SOT-23,TP	SA
5	0401-001056	D205	DIODE-SWITCHING	MMBD4148SE,100V,200MA,SOT-23,TP	SA
5	0401-001056	D206	DIODE-SWITCHING	MMBD4148SE,100V,200MA,SOT-23,TP	SA
5	0403-000579	D207	DIODE-ZENER	BZX84C5V1,4.8-5.4V,200MW,SOT-23,TP	SA
5	0403-000579	D208	DIODE-ZENER	BZX84C5V1,4.8-5.4V,200MW,SOT-23,TP	SA
5	0403-000579	D209	DIODE-ZENER	BZX84C5V1,4.8-5.4V,200MW,SOT-23,TP	SA
5	0403-000579	D210	DIODE-ZENER	BZX84C5V1,4.8-5.4V,200MW,SOT-23,TP	SA
5	0401-001056	D211	DIODE-SWITCHING	MMBD4148SE,100V,200MA,SOT-23,TP	SA
5	0403-000258	D212	DIODE-ZENER	BZX84C5V6,5.2-6V,225MW,SOT-23,TP	SA
5	0505-001376	IC101	FET-SILICON	FDC6329L,N/P,8V,2.5A,-,0.7W,SC-74	SA

Level	Loc. No.	Code No.	Description	Specification	Remarks
5	1203-002842	IC102	IC-POSI.FIXED REG.	AP11170-33A, TO-252, 3P, 6.7X5.6MM, PLASTIC, 3.225/3.365V, -0TO+150C, 1A, -TP	SA
5	1203-002974	IC103	IC-POSI.FIXED REG.	AP11170-25A, TO-252, 3P, 6.7X5.6MM, PLASTIC, 2.45/2.55V, -0TO+150C, 1A, -TP	SA
5	0803-000117	IC201	IC-TTL	74F14, INVERTER, SOP, 14P, 150MIL	SA
5	1103-000129	IC202	IC-EEPROM	24C02, 256x8, SOP, 8P, 5x4mm, 4.5/5.5V, 0to+70C	SA
5	1003-001657	IC301	IC-LCD CONTROLLER	RTD2020A, PQFP, 208P, 28x28mm, -, -, TR, PLASTIC, 3.3V, 0to+70C, -, -, -	SA
5	1103-001023	IC302	IC-EEPROM	24C08, 1Kx8, SOP, 8P, 5x4mm, 2.5/5.5V, 0to+70C	SA
5	3704-000249	IC303_SOCKET	SOCKET-IC	32P, PLCC, SN, 1.27mm	SA
5	1205-002412	IC401	IC-TRANSMITTER	DTC34LM85A, TSSOP, 56P, 14x6.1mm, PLASTIC, 3.3V, 1.4W, 0to+70C, TP, LVDS TRANSMITTER	SA
5	1205-002412	IC402	IC-TRANSMITTER	DTC34LM85A, TSSOP, 56P, 14x6.1mm, PLASTIC, 3.3V, 1.4W, 0to+70C, TP, LVDS TRANSMITTER	SA
5	1203-002997	IC403	IC-VOL. DETECTOR	ELM7529C8A-S, SOT-23, 3P, 1.5x2.9x1.1mm, PLASTIC, 0.3/40.3V, 200mW, -65to+150C, 1.4mA, -	SA
5	2703-001334	L102	INDUCTOR-SMD	1.5uH, 10%, 2012	SA
5	2703-001334	L103	INDUCTOR-SMD	1.5uH, 10%, 2012	SA
5	2703-001334	L104	INDUCTOR-SMD	1.5uH, 10%, 2012	SA
5	2703-001334	L105	INDUCTOR-SMD	1.5uH, 10%, 2012	SA
5	2703-001334	L106	INDUCTOR-SMD	1.5uH, 10%, 2012	SA
5	2703-001334	L107	INDUCTOR-SMD	1.5uH, 10%, 2012	SA
5	2703-001334	L201	INDUCTOR-SMD	1.5uH, 10%, 2012	SA
5	2703-001334	L401	INDUCTOR-SMD	1.5uH, 10%, 2012	SA
5	2703-001334	L402	INDUCTOR-SMD	1.5uH, 10%, 2012	SA
5	2703-001334	L404	INDUCTOR-SMD	1.5uH, 10%, 2012	SA
5	2703-001334	L406	INDUCTOR-SMD	1.5uH, 10%, 2012	SA
5	BN41-00403A	MP1.0	PCB MAIN	GY17HS, 2.1, 0.16T, 95*110*1.6 GY17C, 2	SNA
5	0501-000342	Q101	TR-SMALL SIGNAL	KSC1623-Y, NPN, 200mW, SOT-23, TP, 135-270	SA
5	0501-000342	Q102	TR-SMALL SIGNAL	KSC1623-Y, NPN, 200mW, SOT-23, TP, 135-270	SA
5	2007-000084	R101	R-CHIP	4.7Kohm, 5%, 1/10W, TP, 1608	SA
5	2007-000078	R102	R-CHIP	1Kohm, 5%, 1/10W, TP, 1608	SA
5	2007-000074	R103	R-CHIP	100ohm, 5%, 1/10W, TP, 1608	SA
5	2007-000074	R104	R-CHIP	100ohm, 5%, 1/10W, TP, 1608	SA
5	2007-000074	R105	R-CHIP	100ohm, 5%, 1/10W, TP, 1608	SA
5	2007-000090	R106	R-CHIP	10Kohm, 5%, 1/10W, TP, 1608	SA
5	2007-000090	R109	R-CHIP	10Kohm, 5%, 1/10W, TP, 1608	SA
5	2007-000090	R111	R-CHIP	10Kohm, 5%, 1/10W, TP, 1608	SA
5	2007-000090	R112	R-CHIP	10Kohm, 5%, 1/10W, TP, 1608	SA
5	2007-000090	R113	R-CHIP	10Kohm, 5%, 1/10W, TP, 1608	SA
5	2007-000090	R115	R-CHIP	10Kohm, 5%, 1/10W, TP, 1608	SA
5	2007-000074	R117	R-CHIP	100ohm, 5%, 1/10W, TP, 1608	SA
5	2007-000078	R118	R-CHIP	1Kohm, 5%, 1/10W, TP, 1608	SA
5	2007-000078	R119	R-CHIP	1Kohm, 5%, 1/10W, TP, 1608	SA
5	2007-001167	R120	R-CHIP	75ohm, 5%, 1/10W, TP, 1608	SA
5	2007-000078	R121	R-CHIP	1Kohm, 5%, 1/10W, TP, 1608	SA
5	2007-000078	R122	R-CHIP	1Kohm, 5%, 1/10W, TP, 1608	SA
5	2007-000090	R140	R-CHIP	10Kohm, 5%, 1/10W, TP, 1608	SA
5	2007-000084	R142	R-CHIP	4.7Kohm, 5%, 1/10W, TP, 1608	SA
5	2007-000074	R203	R-CHIP	100ohm, 5%, 1/10W, TP, 1608	SA
5	2007-000074	R204	R-CHIP	100ohm, 5%, 1/10W, TP, 1608	SA
5	2007-001167	R205	R-CHIP	75ohm, 5%, 1/10W, TP, 1608	SA
5	2007-000070	R206	R-CHIP	0ohm, 5%, 1/10W, TP, 1608	SA
5	2007-000070	R207	R-CHIP	0ohm, 5%, 1/10W, TP, 1608	SA
5	3301-000314	R208	BEAD-SMD	120ohm, 1.6x0.8x0.8mm, 150mA, ..., 40000ohm	SNA
5	2007-000123	R209	R-CHIP	1.5Kohm, 5%, 1/10W, TP, 1608	SA
5	2007-000074	R210	R-CHIP	100ohm, 5%, 1/10W, TP, 1608	SA
5	2007-000074	R211	R-CHIP	100ohm, 5%, 1/10W, TP, 1608	SA
5	2007-000084	R212	R-CHIP	4.7Kohm, 5%, 1/10W, TP, 1608	SA
5	2007-000084	R213	R-CHIP	4.7Kohm, 5%, 1/10W, TP, 1608	SA
5	3301-001236	R215	BEAD-SMD	60ohm, 1608, 200mA, ..., 0.7ohm	SA
5	3301-001236	R216	BEAD-SMD	60ohm, 1608, 200mA, ..., 0.7ohm	SA
5	3301-001236	R217	BEAD-SMD	60ohm, 1608, 200mA, ..., 0.7ohm	SA
5	2007-000113	R218	R-CHIP	33ohm, 5%, 1/10W, TP, 1608	SA
5	2007-000113	R219	R-CHIP	33ohm, 5%, 1/10W, TP, 1608	SA
5	2007-000113	R221	R-CHIP	33ohm, 5%, 1/10W, TP, 1608	SA
5	2007-001164	R222	R-CHIP	75ohm, 1%, 1/10W, TP, 1608	SA
5	2007-001164	R223	R-CHIP	75ohm, 1%, 1/10W, TP, 1608	SA
5	2007-001164	R224	R-CHIP	75ohm, 1%, 1/10W, TP, 1608	SA
5	2007-000090	R225	R-CHIP	10Kohm, 5%, 1/10W, TP, 1608	SA
5	2007-000078	R226	R-CHIP	1Kohm, 5%, 1/10W, TP, 1608	SA
5	2007-000113	R251	R-CHIP	33ohm, 5%, 1/10W, TP, 1608	SA
5	2007-000123	R260	R-CHIP	1.5Kohm, 5%, 1/10W, TP, 1608	SA
5	2007-000120	R290	R-CHIP	680ohm, 5%, 1/10W, TP, 1608	SA
5	2007-000113	R301	R-CHIP	33ohm, 5%, 1/10W, TP, 1608	SA
5	2007-001167	R302	R-CHIP	75ohm, 5%, 1/10W, TP, 1608	SA
5	2007-001167	R303	R-CHIP	75ohm, 5%, 1/10W, TP, 1608	SA
5	2007-001167	R304	R-CHIP	75ohm, 5%, 1/10W, TP, 1608	SA
5	2007-001167	R305	R-CHIP	75ohm, 5%, 1/10W, TP, 1608	SA
5	2007-000113	R306	R-CHIP	33ohm, 5%, 1/10W, TP, 1608	SA
5	2007-000113	R307	R-CHIP	33ohm, 5%, 1/10W, TP, 1608	SA
5	2007-000090	R308	R-CHIP	10Kohm, 5%, 1/10W, TP, 1608	SA

Level	Loc. No.	Code No.	Description	Specification	Remarks
5	2007-000090	R309	R-CHIP	10Kohm,5%,1/10W,TP,1608	SA
5	2007-000074	R312	R-CHIP	100ohm,5%,1/10W,TP,1608	SA
5	2007-000109	R313	R-CHIP	1Mohm,5%,1/10W,TP,1608	SA
5	2007-000090	R314	R-CHIP	10Kohm,5%,1/10W,TP,1608	SA
5	2007-000090	R315	R-CHIP	10Kohm,5%,1/10W,TP,1608	SA
5	2007-000090	R316	R-CHIP	10Kohm,5%,1/10W,TP,1608	SA
5	2007-000070	R317	R-CHIP	0ohm,5%,1/10W,TP,1608	SA
5	2007-000070	R320	R-CHIP	0ohm,5%,1/10W,TP,1608	SA
5	2007-000078	R321	R-CHIP	1Kohm,5%,1/10W,TP,1608	SA
5	2007-000090	R322	R-CHIP	10Kohm,5%,1/10W,TP,1608	SA
5	2007-000084	R323	R-CHIP	4.7Kohm,5%,1/10W,TP,1608	SA
5	2007-000084	R324	R-CHIP	4.7Kohm,5%,1/10W,TP,1608	SA
5	2007-000074	R325	R-CHIP	100ohm,5%,1/10W,TP,1608	SA
5	2007-000074	R326	R-CHIP	100ohm,5%,1/10W,TP,1608	SA
5	2007-000070	R421	R-CHIP	0ohm,5%,1/10W,TP,1608	SA
5	2007-000090	R422	R-CHIP	10Kohm,5%,1/10W,TP,1608	SA
5	2007-000090	R423	R-CHIP	10Kohm,5%,1/10W,TP,1608	SA
5	2007-000090	R424	R-CHIP	10Kohm,5%,1/10W,TP,1608	SA
5	2007-000090	R425	R-CHIP	10Kohm,5%,1/10W,TP,1608	SA
5	2007-000090	R426	R-CHIP	10Kohm,5%,1/10W,TP,1608	SA
5	2007-000070	R427	R-CHIP	0ohm,5%,1/10W,TP,1608	SA
5	2007-000070	R428	R-CHIP	0ohm,5%,1/10W,TP,1608	SA
5	2007-000070	R429	R-CHIP	0ohm,5%,1/10W,TP,1608	SA
5	2011-001410	RA301	R-NET	120OHM,5%,1/16W,L,CHIP,8P,TP	SA
5	2011-001410	RA302	R-NET	120OHM,5%,1/16W,L,CHIP,8P,TP	SA
5	2011-001410	RA303	R-NET	120OHM,5%,1/16W,L,CHIP,8P,TP	SA
5	2011-001410	RA304	R-NET	120OHM,5%,1/16W,L,CHIP,8P,TP	SA
5	2011-001410	RA305	R-NET	120OHM,5%,1/16W,L,CHIP,8P,TP	SA
5	2011-001410	RA306	R-NET	120OHM,5%,1/16W,L,CHIP,8P,TP	SA
5	2011-001410	RA307	R-NET	120OHM,5%,1/16W,L,CHIP,8P,TP	SA
5	2011-001410	RA308	R-NET	120OHM,5%,1/16W,L,CHIP,8P,TP	SA
5	2011-001410	RA309	R-NET	120OHM,5%,1/16W,L,CHIP,8P,TP	SA
5	2011-001410	RA310	R-NET	120OHM,5%,1/16W,L,CHIP,8P,TP	SA
5	2011-001410	RA311	R-NET	120OHM,5%,1/16W,L,CHIP,8P,TP	SA
5	2011-001410	RA312	R-NET	120OHM,5%,1/16W,L,CHIP,8P,TP	SA
5	2801-003326	X301	CRYSTAL-SMD	24MHz,30ppm,28-ABX,16pf,50ohm,	SA
3	BN96-01051A	CIS	ASSY MISC P-SHIELD D SUB	GY17HS,SPT E T0.5	SNA
2	BN90-00507J	-	ASSY STAND	GY17HS,EDC	SNA
3	BN96-00936A	STD	ASSY STAND P	GY17HS,ABS HB,BK07	SNA
2	BN90-00629Q	-	ASSY COVER FRONT	GY17HS,EDC	SNA
3	6003-000275	C/F+C/R	SCREW-TAPTITE	BH,+B,M3,L10,BLK ,SWCH1018AK	SNA
3	BN96-00930A	C/F	ASSY COVER P-FRONT	GY17HS,ABS HB,WH11	SNA
2	BN90-00630J	-	ASSY COVER REAR	GY17HS,EDC	SNA
3	6003-000337	C/R+STD	SCREW-TAPTITE	BH,+S,M4,L10,ZPC(BLK),SWRCH18	SNA
3	BN96-00931A	C/R	ASSY COVER P-REAR	GY17HS,ABS HB,BK07	SNA
2	BN91-00349P	-	ASSY LCD-E23	GY17HS	SNA
3	BN07-00160A	LCD	LCD-PANEL	LTM170EU-L11,G0GH,6BIT,358.5*296.5*17.5,16.2M,40,0.264*0.264,0-50,5V,TN	SNA
2	BN91-00769U	-	ASSY CHASSIS-E23	GY17HS	SA
3	BN44-00096A	CIS	IP BOARD	AI-0013,GOYA17 NARROW,110V/230VAC,50/60HZ,+13V/+5V,2.5A/1.8A,48W,AC/DC,0 to +50	SNA
2	BN91-00772M	-	ASSY SHIELD	GY17HS,EDC	SNA
3	6003-000117	BRKT/PAN+IN/PCB	SCREW-TAPTITE	BH,+B,M3,L6,ZPC(YEL),SWRCH18A	SNA
3	6003-000117	BRKT/PAN+M/PCB	SCREW-TAPTITE	BH,+B,M3,L6,ZPC(YEL),SWRCH18A	SNA
3	6003-000276	C/F+BRKT/PAN	SCREW-TAPTITE	BH,+B,M3,L10,ZPC(YEL),SWCH10	SNA
3	0203-001160	CIS	TAPE-FILAMENT	SCOTCH#8915,TO.16,W48,L55M,TRP	SNA
3	BN39-00243E	CIS	CBF-TOUCH SCREEN CABLE	GY17HS,UL2464,UL/CSA,9P/7P,1170mm,IVORY,#26,D-SUB(9P),51004,BK	SA
3	BN39-00244D	CIS	CBF SIGNAL	GY15V,15P/15P,20276-N,1830mm,UL20276,BLACK,D-SUB/MALE,W/O CORE,,DET. TYPE	SA
3	BN39-00496A	CIS	LEAD CONNECTOR	GY17HS,UL1007#26,UL/CSA,2P,180MM,5051-2,SMH250-02,BK,SJ03-01-599,TUBE	SNA
3	BN39-00498A	CIS	HARNESS CONNECT-LVDS	GY17HS,UL/CSA,UL1571#30,30P,130MM,#30,1635L-30,1533L-30,BK,SJ03-01-600,CORE,TAPE	SNA
3	BN63-00064A	CIS	SHIELD-COVER PCB	GH15HS,SECC,T0.5,-,-,-,TOUCH SCREEN	SNA
3	BN63-01270A	CIS	FELT-RUBBER TYPE	GY17HS,PORN SRS40P+NITTO,T1.0,347*5	SNA
3	BN63-01270B	CIS	FELT-RUBBER TYPE	GY17LS,WOOL,T1.0	SNA
3	6003-000117	SH/COV+TOUCH/PCB	SCREW-TAPTITE	BH,+B,M3,L6,ZPC(YEL),SWRCH18A	SNA

7-1-2 GY17HS* Others

Level	Loc. No.	Code No.	Description	Specification	Remarks
3	6003-000117	SH/PCB+SH/D_SUB	SCREW-TAPTITE	BH,+B,M3,L6,ZPC(YEL),SWRCH18A	SNA
3	6003-000117	TOUCH/PCB+TOUCH/BRKT	SCREW-TAPTITE	BH,+B,M3,L6,ZPC(YEL),SWRCH18A	SNA
3	BN96-01041A	CIS	ASSY MISC P-SHIELD COVER	GY17HS,SECC T0.5	SNA
3	BN96-01050B	CIS	ASSY MISC P-SHIELD PANEL	GY17HS,SECC T1.0	SNA
3	BN96-01088A	CIS	ASSY BOARD P-TOUCH SCREEN	GY17HS,Touch Screen assy	SNA
2	BN92-00850A	-	ASSY P/MATERIAL	GY17HS,EDC	SNA
3	0203-001100	P/M	TAPE-OPP MASKING	OPP/W75/CLR.TO.05,W75,L800000,CLR	SNA
3	6902-000521	P/M	BAG PE	HDPE/NITRON/HDPE,TO.015/TO.5/TO.015,W600,L600,TRP,28 LANGUAGE,2-	SNA
3	6902-000576	P/M	BAG ROLL	LDPE,TO.05,W2400,L1000,TRP,-,-	SNA
3	6902-000604	P/M	BAG WRAPPING	LDPE,TO.02,W500,L10000,TRP,-,-	SNA
3	BH69-00256A	P/M	PAD-PACKING-EDGE	MV540,B400,200,2170,-,-,YEL,-,-	SNA
3	BH69-00326A	P/M	PALLET-PACKING	PN15VT/HT,WOODEN,928,962,120,-,-,-	SNA
3	BH69-00457B	P/M	PACKING-PAD BOTTOM	GH15,FOAM,T3.0,930,1000	SNA
3	BH69-30360A	P/M	BAG-AIR	HDPE,TO.2,W1000*L1800,N,-,ALL	SNA
3	BN68-00129A	P/M	LABEL SHIPPING	-,LABEL SHIPPING,ART-PAPER,100G,-,WHT,BLACK,-,-,-	SNA
3	BN69-00140B	P/M	PAD-PALLET COVER	ML15,SW,900*3480,1208,-,-,-,-	SNA
3	BN69-00698A	P/M	CUSHION	GY17HS,EPS	SNA
2	BN92-01009G	-	ASSY BOX	GY17HS,EDC	SNA
3	BH68-00329A	BOX	LABEL BAR CODE-02	ALL,MPRII,DOM,EXPORT,MOJO 90G,WHT	SNA
3	BH75-10529C	BOX	UNIT-HANDLE/PACKING	S/M170MP,PE-LD,PE-HD,-,WHITE,-	SA
3	BN69-00716A	BOX	BOX-00	S/M173VT(GY17HS) W/W,SW4,YEL,A-1,W468*D453*H213	SNA
4	BN72-60001A	CIS	LEVER-TOP	LSD210TL,PE-LD,WHITE,TFT_LCD	SNA
4	BN72-60002C	CIS	LEVER-BOTTOM	S/M170MP,PE-HD,BLUE	SNA
2	BN92-01010F	-	ASSY LABEL	GY17HS,EDC	SNA
3	BN68-00593B	LABEL	LABEL RATING-00	GY17HS(GH17LS),SS,PE,TO.05,90X45,BLK,POLYESTER,EDC	SNA
2	BN92-01014V	-	ASSY ACCESSORY	GY17HSSSC/EDC,EDC,NETHERLANDS	SNA
3	BN96-00945V	CIS	ASSY ACCESSORY	GY17HSSSC/EDC,EDC,NETHERLANDS	SA
4	0203-000214	ACCESSORY	TAPE-OPP MASKING	OPP/W50/CLR.TO.05,W50,L400000,	SNA
4	6902-000110	ACCESSORY	BAG PE	LDPE,TO.05,L356,W240,TRP,28,2,PE MARK	SNA
4	BH68-70438A	ACCESSORY	CARD-BLOC WARRANTY-09	TFT LCD,BASIC,EU,MOJO,100G,W21	SNA
4	BH68-70448A	ACCESSORY	CARD-01	TFT LCD,SRC,RUSSIA,S/W,120,W210*L120,INSTALL CARD	SNA
4	3903-000042	CIS	CBF-POWER CORD	DT,EU,FP3/YES,IEC320 C13/C14,250/250V,10-16/10A,BLK,1830MM,-,H05VV-F 3X0.75MM ² ,	SA
4	BN96-00594L	ACCESSORY	ASSY MANUAL P-00,IB+QSG	173VT,SyncMaster,W/W,18Lang,BN59-355L+BH68-376L	SNA
5	BN59-00355L	IB	S/W DRIVER-00,IB	GY17HS,W/W,SyncMaster,18Lange	SNA
5	BH68-00376L	Q_SETUP	MANUAL-01	LCDQUICK SETUP GUIDE,SYNCMASTER,E/F/S/G/P/L.13LANGS,W/W,MOJO100G,298,420	SA

7-2-1 GY17HSS* Main PCB Parts

Level	Loc. No.	Code No.	Description	Specification	Remarks
0	GY17HSS				
1	E23-GY17HSS	-	1	SEC,LTM170EU-L11	-
3	BN94-00516F	-	ASSY PCB MAIN-E23	GY17HS	SA
4	0202-000008	CIS1	SOLDER-WIRE	S63S-W3.0,S63S,D3,63Sn/37Pb,-	SNA
4	0202-000187	CIS2	SOLDER-WIRE FLUX	-,RS60S,D1.2,63Sn/37Pb	SNA
4	0204-000442	CIS3	SOLVENT	1M-1000,C3H7OH,96,-	SNA
4	0204-001527	CIS4	FLUX	DF-201TVS,MIX,0.820,FLUX13%,14KG	SNA
4	3711-004712	CN101	CONNECTOR-HEADER	BOX,9P,1R,2mm,STRAIGHT,SN	SA
4	3701-001219	CN102	CONNECTOR-DSUB	15P,3R,FEMALE,ANGLE,AUF	SA
4	3711-000056	CN201	CONNECTOR-HEADER	BOX,2P,1R,2.5mm,ANGLE,SN	SA
4	BN97-00348N	MICOM	ASSY MICOM	GY17HS	SNA
5	1107-001456	IC303	IC-FLASH MEMORY	Pm39LV010-70JC,128Kx8Bit,PLCC,32P,11.51x14.05mm,70ns,3V,2.7-3.6V,-,0to+70C,-,-	SA
5	BN82-00114A	CIS	A/S MICOM	GY17HS	SNA
4	BN97-00351X	-	ASSY SMD-E23	GY17HS	SNA
5	2703-001334	BD102	INDUCTOR-SMD	1.5uH,10%,2012	SA
5	2703-001334	BD103	INDUCTOR-SMD	1.5uH,10%,2012	SA
5	2703-001334	BD104	INDUCTOR-SMD	1.5uH,10%,2012	SA
5	2703-001334	BD105	INDUCTOR-SMD	1.5uH,10%,2012	SA
5	2703-001334	BD106	INDUCTOR-SMD	1.5uH,10%,2012	SA
5	2203-001402	C101	C-CER,CHIP	220nF,+80-20%,16V,Y5V,TP,1608	SA
5	2203-001402	C102	C-CER,CHIP	220nF,+80-20%,16V,Y5V,TP,1608	SA
5	2203-005005	C103	C-CER,CHIP	100nF,10%,16V,X7R,TP,1608	SA
5	2203-005437	C104	C-CER,CHIP	1000nF,+80-20%,10V,Y5V,TP,3216	SA
5	2402-000179	C105	C-AL,SMD	47uF,20%,16V,GP,TP,6.6x6.6x5.4	SA
5	2203-005005	C106	C-CER,CHIP	100nF,10%,16V,X7R,TP,1608	SA
5	2402-001042	C107	C-AL,SMD	100uF,20%,16V,GP,TP,6.6x6.6x5.4mm	SA
5	2203-005005	C108	C-CER,CHIP	100nF,10%,16V,X7R,TP,1608	SA
5	2203-005437	C109	C-CER,CHIP	1000nF,+80-20%,10V,Y5V,TP,3216	SA
5	2203-005005	C110	C-CER,CHIP	100nF,10%,16V,X7R,TP,1608	SA
5	2203-005005	C111	C-CER,CHIP	100nF,10%,16V,X7R,TP,1608	SA
5	2203-005005	C112	C-CER,CHIP	100nF,10%,16V,X7R,TP,1608	SA
5	2203-005005	C113	C-CER,CHIP	100nF,10%,16V,X7R,TP,1608	SA
5	2203-005005	C114	C-CER,CHIP	100nF,10%,16V,X7R,TP,1608	SA
5	2203-005005	C115	C-CER,CHIP	100nF,10%,16V,X7R,TP,1608	SA
5	2203-005005	C116	C-CER,CHIP	100nF,10%,16V,X7R,TP,1608	SA
5	2203-005005	C117	C-CER,CHIP	100nF,10%,16V,X7R,TP,1608	SA
5	2203-005005	C118	C-CER,CHIP	100nF,10%,16V,X7R,TP,1608	SA
5	2203-005437	C119	C-CER,CHIP	1000nF,+80-20%,10V,Y5V,TP,3216	SA
5	2203-005005	C120	C-CER,CHIP	100nF,10%,16V,X7R,TP,1608	SA
5	2203-005437	C121	C-CER,CHIP	1000nF,+80-20%,10V,Y5V,TP,3216	SA
5	2203-005005	C122	C-CER,CHIP	100nF,10%,16V,X7R,TP,1608	SA
5	2402-000176	C123	C-AL,SMD	10uF,20%,16V,GP,TP,4.3x4.3x5.4	SA
5	2203-005005	C125	C-CER,CHIP	100nF,10%,16V,X7R,TP,1608	SA
5	2203-005437	C126	C-CER,CHIP	1000nF,+80-20%,10V,Y5V,TP,3216	SA
5	2203-005005	C127	C-CER,CHIP	100nF,10%,16V,X7R,TP,1608	SA
5	2203-005005	C128	C-CER,CHIP	100nF,10%,16V,X7R,TP,1608	SA
5	2203-005005	C129	C-CER,CHIP	100nF,10%,16V,X7R,TP,1608	SA
5	2203-005005	C130	C-CER,CHIP	100nF,10%,16V,X7R,TP,1608	SA
5	2203-005005	C131	C-CER,CHIP	100nF,10%,16V,X7R,TP,1608	SA
5	2203-005005	C132	C-CER,CHIP	100nF,10%,16V,X7R,TP,1608	SA
5	2402-000179	C133	C-AL,SMD	47uF,20%,16V,GP,TP,6.6x6.6x5.4	SA
5	2203-005005	C134	C-CER,CHIP	100nF,10%,16V,X7R,TP,1608	SA
5	2203-005437	C135	C-CER,CHIP	1000nF,+80-20%,10V,Y5V,TP,3216	SA

Level	Loc. No.	Code No.	Description	Specification	Remarks
5	2203-005437	C136	C-CER,CHIP	10000nF,+80-20%,10V,Y5V,TP,3216	SA
5	2203-005005	C137	C-CER,CHIP	100nF,10%,16V,X7R,TP,1608	SA
5	2203-005005	C138	C-CER,CHIP	100nF,10%,16V,X7R,TP,1608	SA
5	2203-005005	C139	C-CER,CHIP	100nF,10%,16V,X7R,TP,1608	SA
5	2203-005005	C140	C-CER,CHIP	100nF,10%,16V,X7R,TP,1608	SA
5	2203-005005	C141	C-CER,CHIP	100nF,10%,16V,X7R,TP,1608	SA
5	2203-005005	C142	C-CER,CHIP	100nF,10%,16V,X7R,TP,1608	SA
5	2203-005005	C143	C-CER,CHIP	100nF,10%,16V,X7R,TP,1608	SA
5	2203-005005	C144	C-CER,CHIP	100nF,10%,16V,X7R,TP,1608	SA
5	2203-005005	C145	C-CER,CHIP	100nF,10%,16V,X7R,TP,1608	SA
5	2203-005005	C146	C-CER,CHIP	100nF,10%,16V,X7R,TP,1608	SA
5	2203-005005	C147	C-CER,CHIP	100nF,10%,16V,X7R,TP,1608	SA
5	2203-005005	C148	C-CER,CHIP	100nF,10%,16V,X7R,TP,1608	SA
5	2203-005005	C149	C-CER,CHIP	100nF,10%,16V,X7R,TP,1608	SA
5	2203-005005	C150	C-CER,CHIP	100nF,10%,16V,X7R,TP,1608	SA
5	2203-005005	C152	C-CER,CHIP	100nF,10%,16V,X7R,TP,1608	SA
5	2203-005005	C153	C-CER,CHIP	100nF,10%,16V,X7R,TP,1608	SA
5	2203-005005	C154	C-CER,CHIP	100nF,10%,16V,X7R,TP,1608	SA
5	2203-005005	C155	C-CER,CHIP	100nF,10%,16V,X7R,TP,1608	SA
5	2203-000440	C156	C-CER,CHIP	1nF,10%,50V,X7R,TP,1608,-	SA
5	2203-005005	C157	C-CER,CHIP	100nF,10%,16V,X7R,TP,1608	SA
5	2203-005005	C158	C-CER,CHIP	100nF,10%,16V,X7R,TP,1608	SA
5	2203-005005	C159	C-CER,CHIP	100nF,10%,16V,X7R,TP,1608	SA
5	2203-005005	C161	C-CER,CHIP	100nF,10%,16V,X7R,TP,1608	SA
5	2203-005005	C162	C-CER,CHIP	100nF,10%,16V,X7R,TP,1608	SA
5	2203-005005	C163	C-CER,CHIP	100nF,10%,16V,X7R,TP,1608	SA
5	2203-005005	C164	C-CER,CHIP	100nF,10%,16V,X7R,TP,1608	SA
5	2203-005437	C165	C-CER,CHIP	10000nF,+80-20%,10V,Y5V,TP,3216	SA
5	2203-005437	C166	C-CER,CHIP	10000nF,+80-20%,10V,Y5V,TP,3216	SA
5	2203-005437	C167	C-CER,CHIP	10000nF,+80-20%,10V,Y5V,TP,3216	SA
5	2007-000090	C169	R-CHIP	10Kohm,5%,1/10W,TP,1608	SA
5	2203-000491	C170	C-CER,CHIP	2.2nF,10%,50V,X7R,TP,1608,-	SA
5	2203-005005	C171	C-CER,CHIP	100nF,10%,16V,X7R,TP,1608	SA
5	2203-005437	C172	C-CER,CHIP	10000nF,+80-20%,10V,Y5V,TP,3216	SA
5	2203-005437	C201	C-CER,CHIP	10000nF,+80-20%,10V,Y5V,TP,3216	SA
5	2203-000189	C202	C-CER,CHIP	100nF,+80-20%,25V,Y5V,TP,1608,	SA
5	2203-005005	C203	C-CER,CHIP	100nF,10%,16V,X7R,TP,1608	SA
5	2203-000236	C204	C-CER,CHIP	0.1NF,5%,50V,C0G,TP,1608	SA
5	2203-000998	C205	C-CER,CHIP	0.047NF,5%,50V,C0G,TP,1608	SA
5	2203-000236	C206	C-CER,CHIP	0.1NF,5%,50V,C0G,TP,1608	SA
5	2203-005005	C207	C-CER,CHIP	100nF,10%,16V,X7R,TP,1608	SA
5	2203-005005	C208	C-CER,CHIP	100nF,10%,16V,X7R,TP,1608	SA
5	2203-005005	C209	C-CER,CHIP	100nF,10%,16V,X7R,TP,1608	SA
5	2203-005437	C214	C-CER,CHIP	10000nF,+80-20%,10V,Y5V,TP,3216	SA
5	2203-005005	C215	C-CER,CHIP	100nF,10%,16V,X7R,TP,1608	SA
5	2203-000626	C302	C-CER,CHIP	0.022NF,5%,50V,C0G,TP,1608	SA
5	2203-000626	C303	C-CER,CHIP	0.022NF,5%,50V,C0G,TP,1608	SA
5	2203-000384	C304	C-CER,CHIP	0.015NF,5%,50V,C0G,TP,1608	SA
5	2203-000384	C305	C-CER,CHIP	0.015NF,5%,50V,C0G,TP,1608	SA
5	2203-005437	C309	C-CER,CHIP	10000nF,+80-20%,10V,Y5V,TP,3216	SA
5	2203-000626	C310	C-CER,CHIP	0.022NF,5%,50V,C0G,TP,1608	SA
5	2203-005005	C311	C-CER,CHIP	100nF,10%,16V,X7R,TP,1608	SA
5	2203-005005	C312	C-CER,CHIP	100nF,10%,16V,X7R,TP,1608	SA
5	2203-000626	C313	C-CER,CHIP	0.022NF,5%,50V,C0G,TP,1608	SA
5	2203-005437	C316	C-CER,CHIP	10000nF,+80-20%,10V,Y5V,TP,3216	SA

Level	Loc. No.	Code No.	Description	Specification	Remarks
5	2203-005005	C317	C-CER,CHIP	100nF,10%,16V,X7R,TP,1608	SA
5	2203-000257	C318	C-CER,CHIP	10nF,10%,50V,X7R,TP,1608	SA
5	2203-005437	C319	C-CER,CHIP	10000nF,+80-20%,10V,Y5V,TP,3216	SA
5	2203-005437	C401	C-CER,CHIP	10000nF,+80-20%,10V,Y5V,TP,3216	SA
5	2203-005005	C402	C-CER,CHIP	100nF,10%,16V,X7R,TP,1608	SA
5	2203-005005	C403	C-CER,CHIP	100nF,10%,16V,X7R,TP,1608	SA
5	2203-005005	C404	C-CER,CHIP	100nF,10%,16V,X7R,TP,1608	SA
5	2203-005005	C405	C-CER,CHIP	100nF,10%,16V,X7R,TP,1608	SA
5	2203-001652	C406	C-CER,CHIP	470nF,+80-20%,16V,Y5V,TP,1608	SA
5	2402-001042	C407	C-AL,SMD	100uF,20%,16V,GP,TP,6.6x6.6x5.4mm	SA
5	2203-005005	C408	C-CER,CHIP	100nF,10%,16V,X7R,TP,1608	SA
5	2203-001652	C409	C-CER,CHIP	470nF,+80-20%,16V,Y5V,TP,1608	SA
5	2203-005437	C410	C-CER,CHIP	10000nF,+80-20%,10V,Y5V,TP,3216	SA
5	2203-005005	C411	C-CER,CHIP	100nF,10%,16V,X7R,TP,1608	SA
5	2203-005005	C412	C-CER,CHIP	100nF,10%,16V,X7R,TP,1608	SA
5	2203-005005	C413	C-CER,CHIP	100nF,10%,16V,X7R,TP,1608	SA
5	2203-005005	C414	C-CER,CHIP	100nF,10%,16V,X7R,TP,1608	SA
5	2203-005005	C415	C-CER,CHIP	100nF,10%,16V,X7R,TP,1608	SA
5	2203-005005	C421	C-CER,CHIP	100nF,10%,16V,X7R,TP,1608	SA
5	0202-001167	CIS5	SOLDER-CREAM	RX3603-2330HO,S45A,PASTE,SN63/PB34/BI3,FLUX10.5%	SA
5	3711-005499	CN401	CONNECTOR-HEADER	BOX,8P,1R,1.25mm,SMD-A,SnPb,IVR	SA
5	3711-005470	CN402	CONNECTOR-HEADER	BOX,30P,1R,1.25mm,SMD-A,Sn+Pb,IVR	SA
5	0403-001435	D101	DIODE-ZENER	QZX363C5V6,5.32-5.88V,200MW,SOT-363,TP	SA
5	0403-001435	D102	DIODE-ZENER	QZX363C5V6,5.32-5.88V,200MW,SOT-363,TP	SA
5	0403-000579	D201	DIODE-ZENER	BZX84C5V1,4.8-5.4V,200MW,SOT-23,TP	SA
5	0403-000579	D202	DIODE-ZENER	BZX84C5V1,4.8-5.4V,200MW,SOT-23,TP	SA
5	0403-000579	D203	DIODE-ZENER	BZX84C5V1,4.8-5.4V,200MW,SOT-23,TP	SA
5	0401-001056	D204	DIODE-SWITCHING	MMBD4148SE,100V,200MA,SOT-23,TP	SA
5	0401-001056	D205	DIODE-SWITCHING	MMBD4148SE,100V,200MA,SOT-23,TP	SA
5	0401-001056	D206	DIODE-SWITCHING	MMBD4148SE,100V,200MA,SOT-23,TP	SA
5	0403-000579	D207	DIODE-ZENER	BZX84C5V1,4.8-5.4V,200MW,SOT-23,TP	SA
5	0403-000579	D208	DIODE-ZENER	BZX84C5V1,4.8-5.4V,200MW,SOT-23,TP	SA
5	0403-000579	D209	DIODE-ZENER	BZX84C5V1,4.8-5.4V,200MW,SOT-23,TP	SA
5	0403-000579	D210	DIODE-ZENER	BZX84C5V1,4.8-5.4V,200MW,SOT-23,TP	SA
5	0401-001056	D211	DIODE-SWITCHING	MMBD4148SE,100V,200MA,SOT-23,TP	SA
5	0403-000258	D212	DIODE-ZENER	BZX84C5V6,5.2-6V,225MW,SOT-23,TP	SA
5	0505-001376	IC101	FET-SILICON	FDC6329L,N/P,8V,2.5A,-,0.7W,SC-74	SA
5	1203-002842	IC102	IC-VOLTAGE REGULATOR	AP1117D-33A,TO-252,3P,6.7X5.6MM,PLASTIC,3.235/3.365V,-,OTO+150C,1A,-,TP	SA
5	1203-002974	IC103	IC-POSI.FIXED REG.	AP1117D-25A,TO-252,3P,6.7X5.6MM,PLASTIC,2.45/2.55V,-,OTO+150C,1A,-,TP	SA
5	0803-000117	IC201	IC-TTL	74F14,INVERTER,SOP,14P,150MIL,	SA
5	1103-000129	IC202	IC-EEPROM	24C02,256x8BIT,SOP,8P,150MIL,1	SA
5	1003-001657	IC301	IC-LCD CONTROLLER	RTD2020A,PQFP,208P,28x28mm,-,-,TR,PLASTIC,3.3V,0to+70C,-,-,-	SA
5	1103-001023	IC302	IC-EEPROM	524C00D81,1028x8BIT,SOP,8P,150MIL,10mS,5V,10%,PLASTIC,0to+70C,TP,LVDS TRANSMITTER	SA
5	3704-000249	IC303_SOCKET	SOCKET-IC	32P,PLCC,SN,1.27mm	SA
5	1205-002412	IC401	IC-TRANSMITTER	DTC34LM85A,TSSOP,56P,14x6.1mm,PLASTIC,3.3V,1.4W,0to+70C,TP,LVDS TRANSMITTER	SA
5	1205-002412	IC402	IC-TRANSMITTER	DTC34LM85A,TSSOP,56P,14x6.1mm,PLASTIC,3.3V,1.4W,0to+70C,TP,LVDS TRANSMITTER	SA
5	1203-002997	IC403	IC-VOL. DETECTOR	ELM7529C8A-S,SOT-23,3P,1.5x2.9x1.1mm,PLASTIC,-0.3/+0.3V,200mW,-,65to+150C,1.4mA,-	SA
5	2703-001334	L102	INDUCTOR-SMD	1.5uH,10%,2012	SA
5	2703-001334	L103	INDUCTOR-SMD	1.5uH,10%,2012	SA
5	2703-001334	L104	INDUCTOR-SMD	1.5uH,10%,2012	SA
5	2703-001334	L105	INDUCTOR-SMD	1.5uH,10%,2012	SA
5	2703-001334	L106	INDUCTOR-SMD	1.5uH,10%,2012	SA
5	2703-001334	L107	INDUCTOR-SMD	1.5uH,10%,2012	SA
5	2703-001334	L201	INDUCTOR-SMD	1.5uH,10%,2012	SA
5	2703-001334	L401	INDUCTOR-SMD	1.5uH,10%,2012	SA

Level	Loc. No.	Code No.	Description	Specification	Remarks
5	2703-001334	L402	INDUCTOR-SMD	1.5uH,10%,2012	SA
5	2703-001334	L404	INDUCTOR-SMD	1.5uH,10%,2012	SA
5	2703-001334	L406	INDUCTOR-SMD	1.5uH,10%,2012	SA
5	BN41-00403A	MP1.0	PCB MAIN	GY17HS,2,1.0,1.6T,95*110*1.6,GY17C,2	SNA
5	0501-000342	Q101	TR-SMALL SIGNAL	KSC1623-Y,NPN,200mW,SOT-23,TP,135-270	SA
5	0501-000342	Q102	TR-SMALL SIGNAL	KSC1623-Y,NPN,200mW,SOT-23,TP,135-270	SA
5	2007-000084	R101	R-CHIP	4.7Kohm,5%,1/10W,TP,1608	SA
5	2007-000078	R102	R-CHIP	1Kohm,5%,1/10W,TP,1608	SA
5	2007-000074	R103	R-CHIP	100ohm,5%,1/10W,TP,1608	SA
5	2007-000074	R104	R-CHIP	100ohm,5%,1/10W,TP,1608	SA
5	2007-000074	R105	R-CHIP	100ohm,5%,1/10W,TP,1608	SA
5	2007-000090	R106	R-CHIP	10Kohm,5%,1/10W,TP,1608	SA
5	2007-000090	R109	R-CHIP	10Kohm,5%,1/10W,TP,1608	SA
5	2007-000090	R111	R-CHIP	10Kohm,5%,1/10W,TP,1608	SA
5	2007-000090	R112	R-CHIP	10Kohm,5%,1/10W,TP,1608	SA
5	2007-000090	R113	R-CHIP	10Kohm,5%,1/10W,TP,1608	SA
5	2007-000090	R115	R-CHIP	10Kohm,5%,1/10W,TP,1608	SA
5	2007-000074	R117	R-CHIP	100ohm,5%,1/10W,TP,1608	SA
5	2007-000078	R118	R-CHIP	1Kohm,5%,1/10W,TP,1608	SA
5	2007-000078	R119	R-CHIP	1Kohm,5%,1/10W,TP,1608	SA
5	2007-001167	R120	R-CHIP	75ohm,5%,1/10W,TP,1608	SA
5	2007-000078	R121	R-CHIP	1Kohm,5%,1/10W,TP,1608	SA
5	2007-000078	R122	R-CHIP	1Kohm,5%,1/10W,TP,1608	SA
5	2007-000090	R140	R-CHIP	10Kohm,5%,1/10W,TP,1608	SA
5	2007-000084	R142	R-CHIP	4.7Kohm,5%,1/10W,TP,1608	SA
5	2007-000074	R203	R-CHIP	100ohm,5%,1/10W,TP,1608	SA
5	2007-000074	R204	R-CHIP	100ohm,5%,1/10W,TP,1608	SA
5	2007-001167	R205	R-CHIP	75ohm,5%,1/10W,TP,1608	SA
5	2007-000070	R206	R-CHIP	0ohm,5%,1/10W,TP,1608	SA
5	2007-000070	R207	R-CHIP	0ohm,5%,1/10W,TP,1608	SA
5	3301-000314	R208	BEAD-SMD	120ohm,1.6x0.8x0.8mm,150mA,,,,40000ohm	SNA
5	2007-000123	R209	R-CHIP	1.5Kohm,5%,1/10W,TP,1608	SA
5	2007-000074	R210	R-CHIP	100ohm,5%,1/10W,TP,1608	SA
5	2007-000074	R211	R-CHIP	100ohm,5%,1/10W,TP,1608	SA
5	2007-000084	R212	R-CHIP	4.7Kohm,5%,1/10W,TP,1608	SA
5	2007-000084	R213	R-CHIP	4.7Kohm,5%,1/10W,TP,1608	SA
5	3301-001236	R215	BEAD-SMD	60ohm,1608,200mA,,,,0.7ohm	SA
5	3301-001236	R216	BEAD-SMD	60ohm,1608,200mA,,,,0.7ohm	SA
5	3301-001236	R217	BEAD-SMD	60ohm,1608,200mA,,,,0.7ohm	SA
5	2007-000113	R218	R-CHIP	33ohm,5%,1/10W,TP,1608	SA
5	2007-000113	R219	R-CHIP	33ohm,5%,1/10W,TP,1608	SA
5	2007-000113	R221	R-CHIP	33ohm,5%,1/10W,TP,1608	SA
5	2007-001164	R222	R-CHIP	75ohm,1%,1/10W,TP,1608	SA
5	2007-001164	R223	R-CHIP	75ohm,1%,1/10W,TP,1608	SA
5	2007-001164	R224	R-CHIP	75ohm,1%,1/10W,TP,1608	SA
5	2007-000090	R225	R-CHIP	10Kohm,5%,1/10W,TP,1608	SA
5	2007-000078	R226	R-CHIP	1Kohm,5%,1/10W,TP,1608	SA
5	2007-000113	R251	R-CHIP	33ohm,5%,1/10W,TP,1608	SA
5	2007-000123	R260	R-CHIP	1.5Kohm,5%,1/10W,TP,1608	SA
5	2007-000120	R290	R-CHIP	680ohm,5%,1/10W,TP,1608	SA
5	2007-000113	R301	R-CHIP	33ohm,5%,1/10W,TP,1608	SA
5	2007-001167	R302	R-CHIP	75ohm,5%,1/10W,TP,1608	SA
5	2007-001167	R303	R-CHIP	75ohm,5%,1/10W,TP,1608	SA
5	2007-001167	R304	R-CHIP	75ohm,5%,1/10W,TP,1608	SA
5	2007-001167	R305	R-CHIP	75ohm,5%,1/10W,TP,1608	SA

7 Electrical Parts List

Level	Loc. No.	Code No.	Description	Specification	Remarks
5	2007-000113	R306	R-CHIP	33ohm,5%,1/10W,TP,1608	SA
5	2007-000113	R307	R-CHIP	33ohm,5%,1/10W,TP,1608	SA
5	2007-000090	R308	R-CHIP	10Kohm,5%,1/10W,TP,1608	SA
5	2007-000090	R309	R-CHIP	10Kohm,5%,1/10W,TP,1608	SA
5	2007-000074	R312	R-CHIP	100ohm,5%,1/10W,TP,1608	SA
5	2007-000109	R313	R-CHIP	1Mohm,5%,1/10W,TP,1608	SA
5	2007-000090	R314	R-CHIP	10Kohm,5%,1/10W,TP,1608	SA
5	2007-000090	R315	R-CHIP	10Kohm,5%,1/10W,TP,1608	SA
5	2007-000090	R316	R-CHIP	10Kohm,5%,1/10W,TP,1608	SA
5	2007-000070	R317	R-CHIP	0ohm,5%,1/10W,TP,1608	SA
5	2007-000070	R320	R-CHIP	0ohm,5%,1/10W,TP,1608	SA
5	2007-000078	R321	R-CHIP	1Kohm,5%,1/10W,TP,1608	SA
5	2007-000090	R322	R-CHIP	10Kohm,5%,1/10W,TP,1608	SA
5	2007-000084	R323	R-CHIP	4.7Kohm,5%,1/10W,TP,1608	SA
5	2007-000084	R324	R-CHIP	4.7Kohm,5%,1/10W,TP,1608	SA
5	2007-000074	R325	R-CHIP	100ohm,5%,1/10W,TP,1608	SA
5	2007-000074	R326	R-CHIP	100ohm,5%,1/10W,TP,1608	SA
5	2007-000070	R421	R-CHIP	0ohm,5%,1/10W,TP,1608	SA
5	2007-000090	R422	R-CHIP	10Kohm,5%,1/10W,TP,1608	SA
5	2007-000090	R423	R-CHIP	10Kohm,5%,1/10W,TP,1608	SA
5	2007-000090	R424	R-CHIP	10Kohm,5%,1/10W,TP,1608	SA
5	2007-000090	R425	R-CHIP	10Kohm,5%,1/10W,TP,1608	SA
5	2007-000090	R426	R-CHIP	10Kohm,5%,1/10W,TP,1608	SA
5	2007-000070	R427	R-CHIP	0ohm,5%,1/10W,TP,1608	SA
5	2007-000070	R428	R-CHIP	0ohm,5%,1/10W,TP,1608	SA
5	2007-000070	R429	R-CHIP	0ohm,5%,1/10W,TP,1608	SA
5	2011-001410	RA301	R-NET	120OHM,5%,1/16W,L,CHIP,8P,TP	SA
5	2011-001410	RA302	R-NET	120OHM,5%,1/16W,L,CHIP,8P,TP	SA
5	2011-001410	RA303	R-NET	120OHM,5%,1/16W,L,CHIP,8P,TP	SA
5	2011-001410	RA304	R-NET	120OHM,5%,1/16W,L,CHIP,8P,TP	SA
5	2011-001410	RA305	R-NET	120OHM,5%,1/16W,L,CHIP,8P,TP	SA
5	2011-001410	RA306	R-NET	120OHM,5%,1/16W,L,CHIP,8P,TP	SA
5	2011-001410	RA307	R-NET	120OHM,5%,1/16W,L,CHIP,8P,TP	SA
5	2011-001410	RA308	R-NET	120OHM,5%,1/16W,L,CHIP,8P,TP	SA
5	2011-001410	RA309	R-NET	120OHM,5%,1/16W,L,CHIP,8P,TP	SA
5	2011-001410	RA310	R-NET	120OHM,5%,1/16W,L,CHIP,8P,TP	SA
5	2011-001410	RA311	R-NET	120OHM,5%,1/16W,L,CHIP,8P,TP	SA
5	2011-001410	RA312	R-NET	120OHM,5%,1/16W,L,CHIP,8P,TP	SA
5	2801-003326	X301	CRYSTAL-SMD	24MHz,30ppm,28-ABX,16pF,50ohm,	SA

7-2-2 GY17HSS* Others

Level	Loc. No.	Code No.	Description	Specification	Remarks
2	BN90-00507J	-	ASSY STAND	GY17HS,EDC	SNA
3	BN96-00936A	STD	ASSY STAND P	GY17HS,ABS HB,BK07	SNA
2	BN90-00629R	-	ASSY COVER FRONT	GY17HS,EDC	SNA
3	6003-000275	C/F+C/R	SCREW-TAPTITE	BH,+B,M3,L10,BLK ,SWCH1018AK	SNA
3	BN96-00930B	C/F	ASSY COVER P-FRONT	GY17HS,ABS HB,WIV16	SNA
2	BN90-00630J	-	ASSY COVER REAR	GY17HS,EDC	SNA
3	6003-000337	C/R+STD	SCREW-TAPTITE	BH,+S,M4,L10,ZPC(BLK),SWRCH18	SNA
3	BN96-00931A	C/R	ASSY COVER P-REAR	GY17HS,ABS HB,BK07	SNA
2	BN91-00349P	-	ASSY LCD-E23	GY17HS	SNA
3	BN07-00160A	LCD	LCD-PANEL	LTM170EUJ-L1,G0GH,6BIT,358.5*296.5*17.5,16.2M,40,0.264*0.264,0-50,5V,TN	SNA
2	BN91-00769U	-	ASSY CHASSIS-E23	GY17HS	SA
3	BN44-00096A	CIS	IP BOARD	AI-0013,GOVA17 NARROW,110V/230VAC,50/60HZ,+13V/+5V,2.5A/1.8A,48W,AC/DC,0 to +50	SNA
3	BN63-01110A	CIS	SHIELD-DSUB	GY17HS,SPTE,TO.5	SA
2	BN91-00772P	-	ASSY SHIELD	GY17HS,EDC	SNA
3	6003-000117	BRKT/PAN+IN/PCB	SCREW-TAPTITE	BH,+B,M3,L6,ZPC(YEL),SWRCH18A	SNA
3	6003-000117	BRKT/PAN+M/PCB	SCREW-TAPTITE	BH,+B,M3,L6,ZPC(YEL),SWRCH18A	SNA
3	6003-000259	C/F+BRKT/PAN	SCREW-TAPTITE	BH,+B,M3,L8,ZPC(YEL),SWRCH18A	SNA
3	BN39-00244D	CIS	CBF SIGNAL	GY15V,15P/15P,20276-N,1830mm,UL20276,BLACK,D-SUB/MALE,W/O CORE,DET. TYPE	SA
3	BN39-00498A	CIS	HARNESS CONNECT-LVDS	GY17HS,UL/CSA,UL1571#30,30P,130mm,#30,1635L-30,1533L-30,BK,SJ03-01-600,TAPE	SNA
3	BN63-01108B	CIS	SHIELD-PANEL	GY17HS,SECC,T1.0	SA
3	BN63-01109A	CIS	SHIELD-PCB	GY17HS,SECC,TO.5	SA
3	6003-000117	SH/PCB+SH/D_SUB	SCREW-TAPTITE	BH,+B,M3,L6,ZPC(YEL),SWRCH18A	SNA
3	BN96-00981A	CIS	ASSY MISC P-PROTECTI/GLASS	GY17HS,REFLECTION GLAS,T3.0	SNA
2	BN92-00850A	-	ASSY P/MATERIAL	GY17HS,EDC	SNA
3	0203-001100	P/M	TAPE-OPP MASKING	OPP/W75/CLR,TO.05,W75,L800000,CLR	SNA
3	6902-000521	P/M	BAG PE	HDPE/NITRON/HDPE,TO.015/TO.5/TO.015,W600,L600,TRP,28 LANGUAGE,2-	SNA
3	6902-000576	P/M	BAG ROLL	LDPE,TO.05,W2400,L1000,TRP,-,-	SNA
3	6902-000604	P/M	BAG WRAPPING	LDPE,TO.02,W500,L10000,TRP,-,-	SNA
3	BH69-00256A	P/M	PAD-PACKING-EDGE	MV540,B400,200,2170,-,-,YEL,-,-	SNA
3	BH69-00326A	P/M	PALLET-PACKING	PN15VT/HT,WOODEN,928,962,120,-,-,-	SNA
3	BH69-00457B	P/M	PACKING-PAD BOTTOM	GH15,FOAM,T3.0,930,1000	SNA
3	BH69-30360A	P/M	BAG-AIR	HDPE,TO.2,W1000*L1800,N,-,ALL	SNA
3	BN68-00129A	P/M	LABEL SHIPPING	-,LABEL SHIPPING,ART-PAPER,100G,-,WHT,BLACK,-,-,-	SNA
3	BN69-00140B	P/M	PAD-PALLET COVER	ML15,SW,900*3480,1208,-,-,-,-	SNA
3	BN69-00698A	P/M	CUSHION	GY17HS,EPS	SNA
2	BN92-01009G	-	ASSY BOX	GY17HS,EDC	SNA
3	BH68-00329A	BOX	LABEL BAR CODE-02	ALL,MPRII,DOM,EXPORT,MOJO 90G,WHT	SNA
3	BH75-10529C	BOX	UNIT-HANDLE/PACKING	S/M170MP,PE-LD,PE-HD,-,WHITE,-	SA
4	BN72-60001A	CIS	LEVER-TOP	LSD210TL,PE-LD,WHITE,TFT_LCD	SNA
4	BN72-60002C	CIS	LEVER-BOTTOM	S/M170MP,PE-HD,BLUE	SNA

7 Electrical Parts List

Level	Loc. No.	Code No.	Description	Specification	Remarks
3	BN69-00716A	BOX	BOX	S/M173VT(GY17HS) W/W,SW4,YEL,A-1,W468*D453*H213	SNA
2	BN92-01010F	-	ASSY LABEL	GY17HS,EDC	SNA
3	BN68-00593B	LABEL	LABEL RATING-00	GY17HS(GH17LS),SS,PE,TO.05,90X45,BLK,POLYESTER,EDC	SNA
2	BN92-01011Q	-	ASSY ACCESSORY	GY17HS,EDC	SNA
3	BN96-00952H	UNIT/ACCESSORY	ASSY ACCESSORY	GY17HS,EDC	SA
4	0203-000214	ACCESSORY	TAPE-OPP MASKING	OPP/W50/CLR,TO.05,W50,L400000,	SNA
4	6902-000110	ACCESSORY	BAG PE	LDPE,TO.05,L356,W240,TRP,28,2,PE MARK	SNA
4	BH39-10007A	ACCESSORY	CBF POWER CORD	DET,250V/6A,H05VV-F,LP-34A/KKP	SA
4	BH68-00489A	ACCESSORY	MANUAL-03	RUSSIAN W/CARD,SER,RUSSIAN,RUSSIA,MOJO100G	SNA
4	BH68-00522A	ACCESSORY	MANUAL USERS-01	P/CORD SETUP GUIDE,SYNCMASTER,EN,W/W,MOJO100G,250,250,00	SNA
4	BH68-70438A	ACCESSORY	CARD-BLOC WARRANTY-09	TFT LCD,BASIC,EU,MOJO,100G,W21	SNA
4	BH68-70448A	ACCESSORY	CARD-01	TFT LCD,SRC,RUSSIA,S/W,120,W210*L120,INSTALL CARD	SNA
4	BN96-00594L	ACCESSORY	ASSY MANUAL P-00,IB+QSG	173VT,SyncMaster,W/W,18Lang,BN59-355L+BH68-376L	SNA
5	BH68-00376L	Q_SETUP	MANUAL-01	LCDQUICK SETUP GUIDE,SYNCMASTER,E/F/S/G/P/L.13LANGS,W/W,MOJO100G,298,420	SA
5	BN59-00355L	IB	S/W DRIVER-00,IB	GY17HS,W/W,SyncMaster,18Lange	SNA

7-3-1 GY17HSG* Main PCB Parts

Level	Loc. No.	Code No.	Description	Specification	Remarks
0	GY17HSG				
1	E23-GY17HSG	-	1	SEC,LTM170EU-L11	-
3	BN94-00516F	-	ASSY PCB MAIN-E23	GY17HS	SA
4	0202-000008	CIS1	SOLDER-WIRE	S63S-W3.0,S63S,D3,63Sn/37Pb,-	SNA
4	0202-000187	CIS2	SOLDER-WIRE FLUX	-,RS60S,D1.2,63Sn/37Pb	SNA
4	0204-000442	CIS3	SOLVENT	1M-1000,C3H7OH,96,-	SNA
4	0204-001527	CIS4	FLUX	DF-201TVS,MIX,0.820,FLUX13%,14KG	SNA
4	3711-004712	CN101	CONNECTOR-HEADER	BOX,9P,1R,2mm,STRAIGHT,SN	SA
4	3701-001219	CN102	CONNECTOR-DSUB	15P,3R,FEMALE,ANGLE,AUF	SA
4	3711-000056	CN201	CONNECTOR-HEADER	BOX,2P,1R,2.5mm,ANGLE,SN	SA
4	BN97-00348N	MICOM	ASSY MICOM	GY17HS	SNA
5	1107-001456	IC303	IC-FLASH MEMORY	Pm39LV010-70JC,128Kx8Bit,PLCC,32P,11.51x14.05mm,70ns,3V,2.7-3.6V,-0to+70C,-,-	SA
5	BN82-00114A	CIS	A/S MICOM	GY17HS	SNA
4	BN97-00351X	-	ASSY SMD-E23	GY17HS	SNA
5	2703-001334	BD102	INDUCTOR-SMD	1.5uH,10%,2012	SA
5	2703-001334	BD103	INDUCTOR-SMD	1.5uH,10%,2012	SA
5	2703-001334	BD104	INDUCTOR-SMD	1.5uH,10%,2012	SA
5	2703-001334	BD105	INDUCTOR-SMD	1.5uH,10%,2012	SA
5	2703-001334	BD106	INDUCTOR-SMD	1.5uH,10%,2012	SA
5	2203-001402	C101	C-CER,CHIP	220nF,+80-20%,16V,Y5V,TP,1608	SA
5	2203-001402	C102	C-CER,CHIP	220nF,+80-20%,16V,Y5V,TP,1608	SA
5	2203-005005	C103	C-CER,CHIP	100nF,10%,16V,X7R,TP,1608	SA
5	2203-005437	C104	C-CER,CHIP	10000nF,+80-20%,10V,Y5V,TP,3216	SA
5	2402-000179	C105	C-AL,SMD	47uF,20%,16V,GP,TP,6.6x6.6x5.4	SA
5	2203-005005	C106	C-CER,CHIP	100nF,10%,16V,X7R,TP,1608	SA
5	2402-001042	C107	C-AL,SMD	100uF,20%,16V,GP,TP,6.6x6.6x5.4mm	SA
5	2203-005005	C108	C-CER,CHIP	100nF,10%,16V,X7R,TP,1608	SA
5	2203-005437	C109	C-CER,CHIP	10000nF,+80-20%,10V,Y5V,TP,3216	SA
5	2203-005005	C110	C-CER,CHIP	100nF,10%,16V,X7R,TP,1608	SA
5	2203-005005	C111	C-CER,CHIP	100nF,10%,16V,X7R,TP,1608	SA
5	2203-005005	C112	C-CER,CHIP	100nF,10%,16V,X7R,TP,1608	SA
5	2203-005005	C113	C-CER,CHIP	100nF,10%,16V,X7R,TP,1608	SA
5	2203-005005	C114	C-CER,CHIP	100nF,10%,16V,X7R,TP,1608	SA
5	2203-005005	C115	C-CER,CHIP	100nF,10%,16V,X7R,TP,1608	SA
5	2203-005005	C116	C-CER,CHIP	100nF,10%,16V,X7R,TP,1608	SA
5	2203-005005	C117	C-CER,CHIP	100nF,10%,16V,X7R,TP,1608	SA
5	2203-005005	C118	C-CER,CHIP	100nF,10%,16V,X7R,TP,1608	SA
5	2203-005437	C119	C-CER,CHIP	10000nF,+80-20%,10V,Y5V,TP,3216	SA
5	2203-005005	C120	C-CER,CHIP	100nF,10%,16V,X7R,TP,1608	SA
5	2203-005437	C121	C-CER,CHIP	10000nF,+80-20%,10V,Y5V,TP,3216	SA
5	2203-005005	C122	C-CER,CHIP	100nF,10%,16V,X7R,TP,1608	SA
5	2402-000176	C123	C-AL,SMD	10uF,20%,16V,GP,TP,4.3x4.3x5.4	SA
5	2203-005005	C125	C-CER,CHIP	100nF,10%,16V,X7R,TP,1608	SA
5	2203-005437	C126	C-CER,CHIP	10000nF,+80-20%,10V,Y5V,TP,3216	SA
5	2203-005005	C127	C-CER,CHIP	100nF,10%,16V,X7R,TP,1608	SA
5	2203-005005	C128	C-CER,CHIP	100nF,10%,16V,X7R,TP,1608	SA
5	2203-005005	C129	C-CER,CHIP	100nF,10%,16V,X7R,TP,1608	SA
5	2203-005005	C130	C-CER,CHIP	100nF,10%,16V,X7R,TP,1608	SA
5	2203-005005	C131	C-CER,CHIP	100nF,10%,16V,X7R,TP,1608	SA
5	2203-005005	C132	C-CER,CHIP	100nF,10%,16V,X7R,TP,1608	SA
5	2402-000179	C133	C-AL,SMD	47uF,20%,16V,GP,TP,6.6x6.6x5.4	SA
5	2203-005005	C134	C-CER,CHIP	100nF,10%,16V,X7R,TP,1608	SA
5	2203-005437	C135	C-CER,CHIP	10000nF,+80-20%,10V,Y5V,TP,3216	SA
5	2203-005437	C136	C-CER,CHIP	10000nF,+80-20%,10V,Y5V,TP,3216	SA
5	2203-005005	C137	C-CER,CHIP	100nF,10%,16V,X7R,TP,1608	SA
5	2203-005005	C138	C-CER,CHIP	100nF,10%,16V,X7R,TP,1608	SA
5	2203-005005	C139	C-CER,CHIP	100nF,10%,16V,X7R,TP,1608	SA
5	2203-005005	C140	C-CER,CHIP	100nF,10%,16V,X7R,TP,1608	SA

Level	Loc. No.	Code No.	Description	Specification	Remarks
5	2203-005005	C141	C-CER,CHIP	100nF,10%,16V,X7R,TP,1608	SA
5	2203-005005	C142	C-CER,CHIP	100nF,10%,16V,X7R,TP,1608	SA
5	2203-005005	C143	C-CER,CHIP	100nF,10%,16V,X7R,TP,1608	SA
5	2203-005005	C144	C-CER,CHIP	100nF,10%,16V,X7R,TP,1608	SA
5	2203-005005	C145	C-CER,CHIP	100nF,10%,16V,X7R,TP,1608	SA
5	2203-005005	C146	C-CER,CHIP	100nF,10%,16V,X7R,TP,1608	SA
5	2203-005005	C147	C-CER,CHIP	100nF,10%,16V,X7R,TP,1608	SA
5	2203-005005	C148	C-CER,CHIP	100nF,10%,16V,X7R,TP,1608	SA
5	2203-005005	C149	C-CER,CHIP	100nF,10%,16V,X7R,TP,1608	SA
5	2203-005005	C150	C-CER,CHIP	100nF,10%,16V,X7R,TP,1608	SA
5	2203-005005	C152	C-CER,CHIP	100nF,10%,16V,X7R,TP,1608	SA
5	2203-005005	C153	C-CER,CHIP	100nF,10%,16V,X7R,TP,1608	SA
5	2203-005005	C154	C-CER,CHIP	100nF,10%,16V,X7R,TP,1608	SA
5	2203-005005	C155	C-CER,CHIP	100nF,10%,16V,X7R,TP,1608	SA
5	2203-000440	C156	C-CER,CHIP	1nF,10%,50V,X7R,TP,1608,-	SA
5	2203-005005	C157	C-CER,CHIP	100nF,10%,16V,X7R,TP,1608	SA
5	2203-005005	C158	C-CER,CHIP	100nF,10%,16V,X7R,TP,1608	SA
5	2203-005005	C159	C-CER,CHIP	100nF,10%,16V,X7R,TP,1608	SA
5	2203-005005	C161	C-CER,CHIP	100nF,10%,16V,X7R,TP,1608	SA
5	2203-005005	C162	C-CER,CHIP	100nF,10%,16V,X7R,TP,1608	SA
5	2203-005005	C163	C-CER,CHIP	100nF,10%,16V,X7R,TP,1608	SA
5	2203-005005	C164	C-CER,CHIP	100nF,10%,16V,X7R,TP,1608	SA
5	2203-005437	C165	C-CER,CHIP	10000nF,+80-20%,10V,Y5V,TP,3216	SA
5	2203-005437	C166	C-CER,CHIP	10000nF,+80-20%,10V,Y5V,TP,3216	SA
5	2203-005437	C167	C-CER,CHIP	10000nF,+80-20%,10V,Y5V,TP,3216	SA
5	2007-000090	C169	R-CHIP	10Kohm,5%,1/10W,TP,1608	SA
5	2203-000491	C170	C-CER,CHIP	2.2nF,10%,50V,X7R,TP,1608,-	SA
5	2203-005005	C171	C-CER,CHIP	100nF,10%,16V,X7R,TP,1608	SA
5	2203-005437	C172	C-CER,CHIP	10000nF,+80-20%,10V,Y5V,TP,3216	SA
5	2203-005437	C201	C-CER,CHIP	10000nF,+80-20%,10V,Y5V,TP,3216	SA
5	2203-000189	C202	C-CER,CHIP	100nF,+80-20%,25V,Y5V,TP,1608,	SA
5	2203-005005	C203	C-CER,CHIP	100nF,10%,16V,X7R,TP,1608	SA
5	2203-000236	C204	C-CER,CHIP	0.1nF,5%,50V,COG,TP,1608	SA
5	2203-000998	C205	C-CER,CHIP	0.047nF,5%,50V,COG,TP,1608	SA
5	2203-000236	C206	C-CER,CHIP	0.1nF,5%,50V,COG,TP,1608	SA
5	2203-005005	C207	C-CER,CHIP	100nF,10%,16V,X7R,TP,1608	SA
5	2203-005005	C208	C-CER,CHIP	100nF,10%,16V,X7R,TP,1608	SA
5	2203-005005	C209	C-CER,CHIP	100nF,10%,16V,X7R,TP,1608	SA
5	2203-005437	C214	C-CER,CHIP	10000nF,+80-20%,10V,Y5V,TP,3216	SA
5	2203-005005	C215	C-CER,CHIP	100nF,10%,16V,X7R,TP,1608	SA
5	2203-000626	C302	C-CER,CHIP	0.022nF,5%,50V,COG,TP,1608	SA
5	2203-000626	C303	C-CER,CHIP	0.022nF,5%,50V,COG,TP,1608	SA
5	2203-000384	C304	C-CER,CHIP	0.015nF,5%,50V,COG,TP,1608	SA
5	2203-000384	C305	C-CER,CHIP	0.015nF,5%,50V,COG,TP,1608	SA
5	2203-005437	C309	C-CER,CHIP	10000nF,+80-20%,10V,Y5V,TP,3216	SA
5	2203-000626	C310	C-CER,CHIP	0.022nF,5%,50V,COG,TP,1608	SA
5	2203-005005	C311	C-CER,CHIP	100nF,10%,16V,X7R,TP,1608	SA
5	2203-005005	C312	C-CER,CHIP	100nF,10%,16V,X7R,TP,1608	SA
5	2203-000626	C313	C-CER,CHIP	0.022nF,5%,50V,COG,TP,1608	SA
5	2203-005437	C316	C-CER,CHIP	10000nF,+80-20%,10V,Y5V,TP,3216	SA
5	2203-005005	C317	C-CER,CHIP	100nF,10%,16V,X7R,TP,1608	SA
5	2203-000257	C318	C-CER,CHIP	10nF,10%,50V,X7R,TP,1608	SA
5	2203-005437	C319	C-CER,CHIP	10000nF,+80-20%,10V,Y5V,TP,3216	SA
5	2203-005437	C401	C-CER,CHIP	10000nF,+80-20%,10V,Y5V,TP,3216	SA
5	2203-005005	C402	C-CER,CHIP	100nF,10%,16V,X7R,TP,1608	SA

Level	Loc. No.	Code No.	Description	Specification	Remarks
5	2203-005005	C403	C-CER,CHIP	100nF,10%,16V,X7R,TP,1608	SA
5	2203-005005	C404	C-CER,CHIP	100nF,10%,16V,X7R,TP,1608	SA
5	2203-005005	C405	C-CER,CHIP	100nF,10%,16V,X7R,TP,1608	SA
5	2203-001652	C406	C-CER,CHIP	470nF,+80-20%,16V,Y5V,TP,1608	SA
5	2402-001042	C407	C-AL,SMD	100uF,20%,16V,GP,TP,6.6x6.6x5.4mm	SA
5	2203-005005	C408	C-CER,CHIP	100nF,10%,16V,X7R,TP,1608	SA
5	2203-001652	C409	C-CER,CHIP	470nF,+80-20%,16V,Y5V,TP,1608	SA
5	2203-005437	C410	C-CER,CHIP	1000nF,+80-20%,10V,Y5V,TP,3216	SA
5	2203-005005	C411	C-CER,CHIP	100nF,10%,16V,X7R,TP,1608	SA
5	2203-005005	C412	C-CER,CHIP	100nF,10%,16V,X7R,TP,1608	SA
5	2203-005005	C413	C-CER,CHIP	100nF,10%,16V,X7R,TP,1608	SA
5	2203-005005	C414	C-CER,CHIP	100nF,10%,16V,X7R,TP,1608	SA
5	2203-005005	C415	C-CER,CHIP	100nF,10%,16V,X7R,TP,1608	SA
5	2203-005005	C421	C-CER,CHIP	100nF,10%,16V,X7R,TP,1608	SA
5	0202-001167	CIS5	SOLDER-CREAM	RX3603-2330H0,S45A,PASTE,SN63/PB34/BI3,FLUX10.5%	SA
5	3711-005499	CN401	CONNECTOR-HEADER	BOX,8P,1R,1.25mm,SMD-A,SnPb,IVR	SA
5	3711-005470	CN402	CONNECTOR-HEADER	BOX,30P,1R,1.25mm,SMD-A,Sn+Pb,IVR	SA
5	0403-001435	D101	DIODE-ZENER	QZX363C5V6,5.32-5.88V,200MW,SOT-363,TP	SA
5	0403-001435	D102	DIODE-ZENER	QZX363C5V6,5.32-5.88V,200MW,SOT-363,TP	SA
5	0403-000579	D201	DIODE-ZENER	BZX84C5V1,4.8-5.4V,200MW,SOT-23,TP	SA
5	0403-000579	D202	DIODE-ZENER	BZX84C5V1,4.8-5.4V,200MW,SOT-23,TP	SA
5	0403-000579	D203	DIODE-ZENER	BZX84C5V1,4.8-5.4V,200MW,SOT-23,TP	SA
5	0401-001056	D204	DIODE-SWITCHING	MMBD4148SE,100V,200MA,SOT-23,TP	SA
5	0401-001056	D205	DIODE-SWITCHING	MMBD4148SE,100V,200MA,SOT-23,TP	SA
5	0401-001056	D206	DIODE-SWITCHING	MMBD4148SE,100V,200MA,SOT-23,TP	SA
5	0403-000579	D207	DIODE-ZENER	BZX84C5V1,4.8-5.4V,200MW,SOT-23,TP	SA
5	0403-000579	D208	DIODE-ZENER	BZX84C5V1,4.8-5.4V,200MW,SOT-23,TP	SA
5	0403-000579	D209	DIODE-ZENER	BZX84C5V1,4.8-5.4V,200MW,SOT-23,TP	SA
5	0403-000579	D210	DIODE-ZENER	BZX84C5V1,4.8-5.4V,200MW,SOT-23,TP	SA
5	0401-001056	D211	DIODE-SWITCHING	MMBD4148SE,100V,200MA,SOT-23,TP	SA
5	0403-000258	D212	DIODE-ZENER	BZX84C5V6,5.2-6V,225MW,SOT-23,TP	SA
5	0505-001376	IC101	FET-SILICON	FDC6329L,N/P,8V,2.5A,-,0.7W,SC-74	SA
5	1203-002842	IC102	IC-VOLTAGE REGULATOR	AP1117D-33A,TO-252,3P,6.7X5.6MM,PLASTIC,3.235/3.365V,-,OTO+150C,1A,-,TP	SA
5	1203-002974	IC103	IC-POSI.FIXED REG.	AP1117D-25A,TO-252,3P,6.7X5.6MM,PLASTIC,2.45/2.55V,-,OTO+150C,1A,-,TP	SA
5	0803-000117	IC201	IC-TTL	74F14,INVERTER,SOP,14P,150MIL,	SA
5	1103-000129	IC202	IC-EEPROM	24C02,256x8BIT,SOP,8P,150MIL,1	SA
5	1003-001657	IC301	IC-LCD CONTROLLER	RTD2020A,PQFP,208P,28x28mm,-,TR,PLASTIC,3.3V,0to+70C,-,-,-	SA
5	1103-001023	IC302	IC-EEPROM	524C80D81,1028x8BIT,SOP,8P,150MIL,10mS,5V,10%,PLASTIC,0to+70C,110uA,CMOS,TP	SA
5	3704-000249	IC303_SOCKET	SOCKET-IC	32P,PLCC,SN,1.27mm	SA
5	1205-002412	IC401	IC-TRANSMITTER	DTC34LM85A,TSSOP,56P,14x6.1mm,PLASTIC,3.3V,1.4W,0to+70C,TP,LVDS TRANSMITTER	SA
5	1205-002412	IC402	IC-TRANSMITTER	DTC34LM85A,TSSOP,56P,14x6.1mm,PLASTIC,3.3V,1.4W,0to+70C,TP,LVDS TRANSMITTER	SA
5	1203-002997	IC403	IC-VOL. DETECTOR	ELM7529CBA-S,SOT-23,3P,1.5x2.9x1.1mm,PLASTIC,-0.3/+0.3V,200mW,-65to+150C,1.4mA,-	SA
5	2703-001334	L102	INDUCTOR-SMD	1.5uH,10%,2012	SA
5	2703-001334	L103	INDUCTOR-SMD	1.5uH,10%,2012	SA
5	2703-001334	L104	INDUCTOR-SMD	1.5uH,10%,2012	SA
5	2703-001334	L105	INDUCTOR-SMD	1.5uH,10%,2012	SA
5	2703-001334	L106	INDUCTOR-SMD	1.5uH,10%,2012	SA
5	2703-001334	L107	INDUCTOR-SMD	1.5uH,10%,2012	SA
5	2703-001334	L201	INDUCTOR-SMD	1.5uH,10%,2012	SA
5	2703-001334	L401	INDUCTOR-SMD	1.5uH,10%,2012	SA
5	2703-001334	L402	INDUCTOR-SMD	1.5uH,10%,2012	SA
5	2703-001334	L404	INDUCTOR-SMD	1.5uH,10%,2012	SA
5	2703-001334	L406	INDUCTOR-SMD	1.5uH,10%,2012	SA
5	BN41-00403A	MP1.0	PCB MAIN	GY17HS,2,1.0,1.6T,95*110*1.6,GY17C,2	SNA
5	0501-000342	Q101	TR-SMALL SIGNAL	KSC1623-Y,NPN,200mW,SOT-23,TP,135-270	SA

Level	Loc. No.	Code No.	Description	Specification	Remarks
5	0501-000342	Q102	TR-SMALL SIGNAL	KSC1623-Y,NPN,200mW,SOT-23,TP,135-270	SA
5	2007-000084	R101	R-CHIP	4.7Kohm,5%,1/10W,TP,1608	SA
5	2007-000078	R102	R-CHIP	1Kohm,5%,1/10W,TP,1608	SA
5	2007-000074	R103	R-CHIP	100ohm,5%,1/10W,TP,1608	SA
5	2007-000074	R104	R-CHIP	100ohm,5%,1/10W,TP,1608	SA
5	2007-000074	R105	R-CHIP	100ohm,5%,1/10W,TP,1608	SA
5	2007-000090	R106	R-CHIP	10Kohm,5%,1/10W,TP,1608	SA
5	2007-000090	R109	R-CHIP	10Kohm,5%,1/10W,TP,1608	SA
5	2007-000090	R111	R-CHIP	10Kohm,5%,1/10W,TP,1608	SA
5	2007-000090	R112	R-CHIP	10Kohm,5%,1/10W,TP,1608	SA
5	2007-000090	R113	R-CHIP	10Kohm,5%,1/10W,TP,1608	SA
5	2007-000090	R115	R-CHIP	10Kohm,5%,1/10W,TP,1608	SA
5	2007-000074	R117	R-CHIP	100ohm,5%,1/10W,TP,1608	SA
5	2007-000078	R118	R-CHIP	1Kohm,5%,1/10W,TP,1608	SA
5	2007-000078	R119	R-CHIP	1Kohm,5%,1/10W,TP,1608	SA
5	2007-001167	R120	R-CHIP	75ohm,5%,1/10W,TP,1608	SA
5	2007-000078	R121	R-CHIP	1Kohm,5%,1/10W,TP,1608	SA
5	2007-000078	R122	R-CHIP	1Kohm,5%,1/10W,TP,1608	SA
5	2007-000090	R140	R-CHIP	10Kohm,5%,1/10W,TP,1608	SA
5	2007-000084	R142	R-CHIP	4.7Kohm,5%,1/10W,TP,1608	SA
5	2007-000074	R203	R-CHIP	100ohm,5%,1/10W,TP,1608	SA
5	2007-000074	R204	R-CHIP	100ohm,5%,1/10W,TP,1608	SA
5	2007-001167	R205	R-CHIP	75ohm,5%,1/10W,TP,1608	SA
5	2007-000070	R206	R-CHIP	0ohm,5%,1/10W,TP,1608	SA
5	2007-000070	R207	R-CHIP	0ohm,5%,1/10W,TP,1608	SA
5	3301-000314	R208	BEAD-SMD	120ohm,1.6x0.8x0.8mm,150mA,,,,40000ohm	SNA
5	2007-000123	R209	R-CHIP	1.5Kohm,5%,1/10W,TP,1608	SA
5	2007-000074	R210	R-CHIP	100ohm,5%,1/10W,TP,1608	SA
5	2007-000074	R211	R-CHIP	100ohm,5%,1/10W,TP,1608	SA
5	2007-000084	R212	R-CHIP	4.7Kohm,5%,1/10W,TP,1608	SA
5	2007-000084	R213	R-CHIP	4.7Kohm,5%,1/10W,TP,1608	SA
5	3301-001236	R215	BEAD-SMD	60ohm,1608,200mA,,,,0.7ohm	SA
5	3301-001236	R216	BEAD-SMD	60ohm,1608,200mA,,,,0.7ohm	SA
5	3301-001236	R217	BEAD-SMD	60ohm,1608,200mA,,,,0.7ohm	SA
5	2007-000113	R218	R-CHIP	33ohm,5%,1/10W,TP,1608	SA
5	2007-000113	R219	R-CHIP	33ohm,5%,1/10W,TP,1608	SA
5	2007-000113	R221	R-CHIP	33ohm,5%,1/10W,TP,1608	SA
5	2007-001164	R222	R-CHIP	75ohm,1%,1/10W,TP,1608	SA
5	2007-001164	R223	R-CHIP	75ohm,1%,1/10W,TP,1608	SA
5	2007-001164	R224	R-CHIP	75ohm,1%,1/10W,TP,1608	SA
5	2007-000090	R225	R-CHIP	10Kohm,5%,1/10W,TP,1608	SA
5	2007-000078	R226	R-CHIP	1Kohm,5%,1/10W,TP,1608	SA
5	2007-000113	R251	R-CHIP	33ohm,5%,1/10W,TP,1608	SA
5	2007-000123	R260	R-CHIP	1.5Kohm,5%,1/10W,TP,1608	SA
5	2007-000120	R290	R-CHIP	680ohm,5%,1/10W,TP,1608	SA
5	2007-000113	R301	R-CHIP	33ohm,5%,1/10W,TP,1608	SA
5	2007-001167	R302	R-CHIP	75ohm,5%,1/10W,TP,1608	SA
5	2007-001167	R303	R-CHIP	75ohm,5%,1/10W,TP,1608	SA
5	2007-001167	R304	R-CHIP	75ohm,5%,1/10W,TP,1608	SA
5	2007-001167	R305	R-CHIP	75ohm,5%,1/10W,TP,1608	SA
5	2007-000113	R306	R-CHIP	33ohm,5%,1/10W,TP,1608	SA
5	2007-000113	R307	R-CHIP	33ohm,5%,1/10W,TP,1608	SA
5	2007-000090	R308	R-CHIP	10Kohm,5%,1/10W,TP,1608	SA
5	2007-000090	R309	R-CHIP	10Kohm,5%,1/10W,TP,1608	SA
5	2007-000074	R312	R-CHIP	100ohm,5%,1/10W,TP,1608	SA

Level	Loc. No.	Code No.	Description	Specification	Remarks
5	2007-000109	R313	R-CHIP	1Mohm,5%,1/10W,TP,1608	SA
5	2007-000090	R314	R-CHIP	10Kohm,5%,1/10W,TP,1608	SA
5	2007-000090	R315	R-CHIP	10Kohm,5%,1/10W,TP,1608	SA
5	2007-000090	R316	R-CHIP	10Kohm,5%,1/10W,TP,1608	SA
5	2007-000070	R317	R-CHIP	0ohm,5%,1/10W,TP,1608	SA
5	2007-000070	R320	R-CHIP	0ohm,5%,1/10W,TP,1608	SA
5	2007-000078	R321	R-CHIP	1Kohm,5%,1/10W,TP,1608	SA
5	2007-000090	R322	R-CHIP	10Kohm,5%,1/10W,TP,1608	SA
5	2007-000084	R323	R-CHIP	4.7Kohm,5%,1/10W,TP,1608	SA
5	2007-000084	R324	R-CHIP	4.7Kohm,5%,1/10W,TP,1608	SA
5	2007-000074	R325	R-CHIP	100ohm,5%,1/10W,TP,1608	SA
5	2007-000074	R326	R-CHIP	100ohm,5%,1/10W,TP,1608	SA
5	2007-000070	R421	R-CHIP	0ohm,5%,1/10W,TP,1608	SA
5	2007-000090	R422	R-CHIP	10Kohm,5%,1/10W,TP,1608	SA
5	2007-000090	R423	R-CHIP	10Kohm,5%,1/10W,TP,1608	SA
5	2007-000090	R424	R-CHIP	10Kohm,5%,1/10W,TP,1608	SA
5	2007-000090	R425	R-CHIP	10Kohm,5%,1/10W,TP,1608	SA
5	2007-000090	R426	R-CHIP	10Kohm,5%,1/10W,TP,1608	SA
5	2007-000070	R427	R-CHIP	0ohm,5%,1/10W,TP,1608	SA
5	2007-000070	R428	R-CHIP	0ohm,5%,1/10W,TP,1608	SA
5	2007-000070	R429	R-CHIP	0ohm,5%,1/10W,TP,1608	SA
5	2011-001410	RA301	R-NET	120OHM,5%,1/16W,L,CHIP,8P,TP	SA
5	2011-001410	RA302	R-NET	120OHM,5%,1/16W,L,CHIP,8P,TP	SA
5	2011-001410	RA303	R-NET	120OHM,5%,1/16W,L,CHIP,8P,TP	SA
5	2011-001410	RA304	R-NET	120OHM,5%,1/16W,L,CHIP,8P,TP	SA
5	2011-001410	RA305	R-NET	120OHM,5%,1/16W,L,CHIP,8P,TP	SA
5	2011-001410	RA306	R-NET	120OHM,5%,1/16W,L,CHIP,8P,TP	SA
5	2011-001410	RA307	R-NET	120OHM,5%,1/16W,L,CHIP,8P,TP	SA
5	2011-001410	RA308	R-NET	120OHM,5%,1/16W,L,CHIP,8P,TP	SA
5	2011-001410	RA309	R-NET	120OHM,5%,1/16W,L,CHIP,8P,TP	SA
5	2011-001410	RA310	R-NET	120OHM,5%,1/16W,L,CHIP,8P,TP	SA
5	2011-001410	RA311	R-NET	120OHM,5%,1/16W,L,CHIP,8P,TP	SA
5	2011-001410	RA312	R-NET	120OHM,5%,1/16W,L,CHIP,8P,TP	SA
5	2801-003326	X301	CRYSTAL-SMD	24MHz,30ppm,28-ABX,16pF,50ohm,	SA

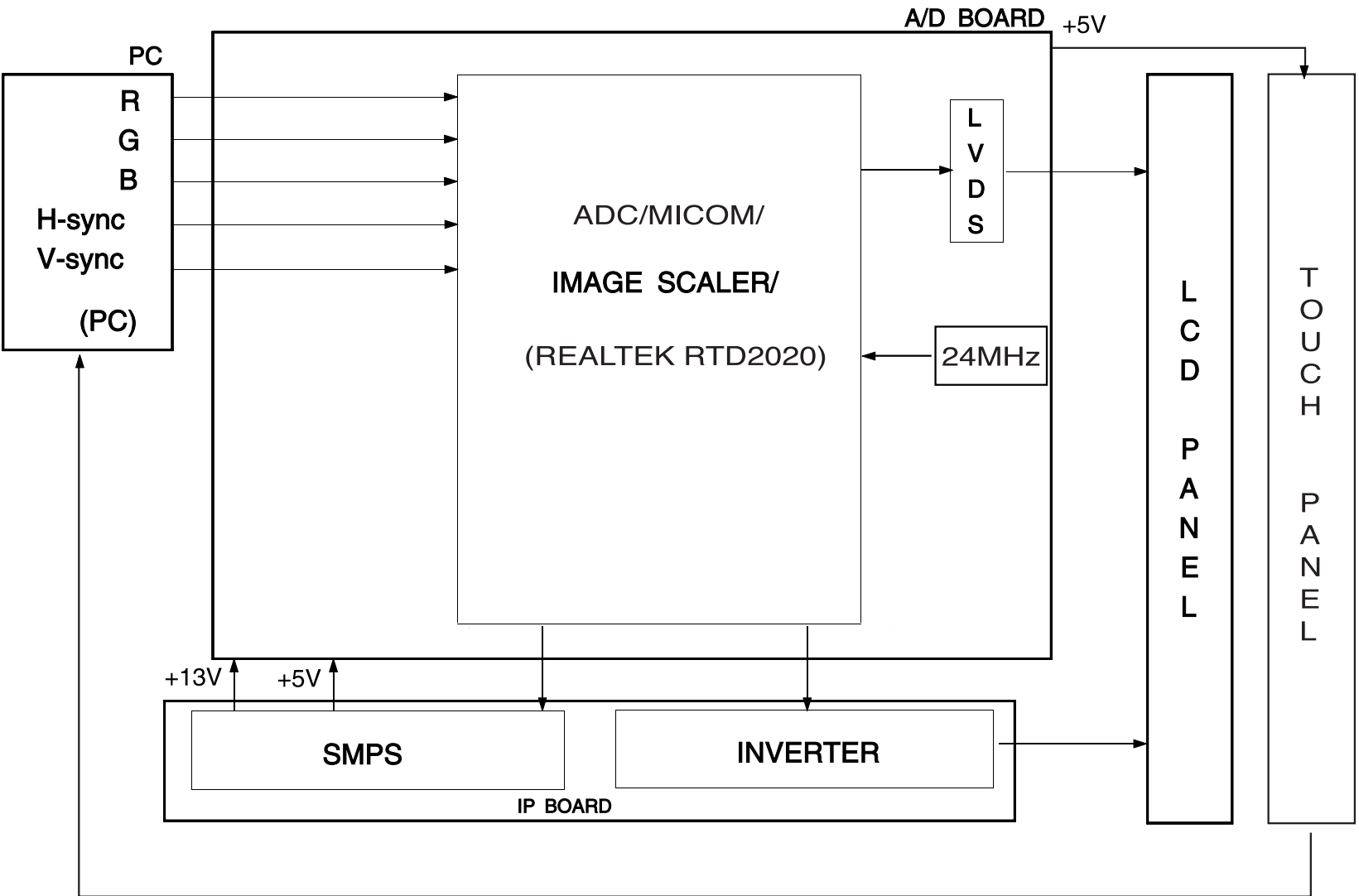
7-3-2 GY17HSG* Others

Level	Loc. No.	Code No.	Description	Specification	Remarks
2	BN90-00507J	-	ASSY STAND	GY17HS,EDC	SNA
3	BN96-00936A	STD	ASSY STAND P	GY17HS,ABS HB,BK07	SNA
2	BN90-00629R	-	ASSY COVER FRONT	GY17HS,EDC	SNA
3	6003-000275	C/F+C/R	SCREW-TAPTITE	BH,+B,M3,L10,BLK ,SWCH1018AK	SNA
3	BN96-00930B	C/F	ASSY COVER P-FRONT	GY17HS,ABS HB,WV16	SNA
2	BN90-00630J	-	ASSY COVER REAR	GY17HS,EDC	SNA
3	6003-000337	C/R+STD	SCREW-TAPTITE	BH,+S,M4,L10,ZPC(BLK),SWRCH18	SNA
3	BN96-00931A	C/R	ASSY COVER P-REAR	GY17HS,ABS HB,BK07	SNA
2	BN91-00349P	-	ASSY LCD-E23	GY17HS	SNA
3	BN07-00160A	LCD	LCD-PANEL	LTM170EU-L11,G0GH,6BIT,358.5*296.5*17.5,16.2MM,40,0.264*0.264,0-50,5V,TN	SNA
2	BN91-00769U	-	ASSY CHASSIS-E23	GY17HS	SA
3	BN44-00096A	CIS	IP BOARD	AI-0013,GOYA17 NARROW,110V/230VAC,50/60HZ,+13V/+5V,2.5A/1.8A,48W,AC/DC,0 to +50	SNA
3	BN63-01110A	CIS	SHIELD-DSUB	GY17HS,SPT,TO.5	SA
2	BN91-00772N	-	ASSY SHIELD	GY17HS,EDC	SNA
3	6003-000117	BRKT/PAN+IN/PCB	SCREW-TAPTITE	BH,+B,M3,L6,ZPC(YEL),SWRCH18A	SNA
3	6003-000117	BRKT/PAN+M/PCB	SCREW-TAPTITE	BH,+B,M3,L6,ZPC(YEL),SWRCH18A	SNA
3	6003-000117	SH/PCB+SH/D_SUB	SCREW-TAPTITE	BH,+B,M3,L6,ZPC(YEL),SWRCH18A	SNA
3	6003-000259	C/F+BRKT/PAN	SCREW-TAPTITE	BH,+B,M3,L8,ZPC(YEL),SWRCH18A	SNA
3	BN39-00244D	CIS	CBF SIGNAL	GY15V,15P,15P,20276-N,1830mm,UL20276,BLACK,D-SUB/MALE,W/O CORE,DET. TYPE	SA
3	BN39-00498A	CIS	HARNESS CONNECT-LVDS	GY17HS,UJ,CSA,UL1571#30,30P,130mm,#30,1635L-30,1533L-30,BK,SJ03-01-600,TAPE	SNA
3	BN63-01108A	CIS	SHIELD-PANEL	GY17HS,SECC,T1.0	SA
3	BN63-01109A	CIS	SHIELD-PCB	GY17HS,SECC,TO.5	SA
2	BN92-00850A	-	ASSY P/MATERIAL	GY17HS,EDC	SNA
3	0203-001100	P/M	TAPE-OPP MASKING	OPP/W75/CLR,TO.05,W75,L800000,CLR	SNA
3	6902-000521	P/M	BAG PE	HDPE/NITRON/HDPE,TO.015/TO.5/TO.015,W600,L600,TRP,28 LANGUAGE,2-	SNA
3	6902-000576	P/M	BAG ROLL	LDPE,TO.05,W2400,L1000,TRP,-,-	SNA
3	6902-000604	P/M	BAG WRAPPING	LDPE,TO.02,W500,L10000,TRP,-,-	SNA
3	BH69-00256A	P/M	PAD-PACKING-EDGE	MV540,B400,200,2170,-,-,YEL,-,-	SNA
3	BH69-00326A	P/M	PALLET-PACKING	PN15VT/HT,WOODEN,928,962,120,-,-,-	SNA
3	BH69-00457B	P/M	PACKING-PAD BOTTOM	GH15,FOAM,T3.0,930,1000	SNA
3	BH69-30360A	P/M	BAG-AIR	HDPE,TO.2,W1000*L1800,N.-,ALL	SNA
3	BN68-00129A	P/M	LABEL SHIPPING	-,LABEL SHIPPING,ART-PAPER,100G,-,WHT,BLACK,-,-,-	SNA
3	BN69-00140B	P/M	PAD-PALLET COVER	ML15,SW,900*3480,1208,-,-,-,-	SNA
3	BN69-00698A	P/M	CUSHION	GY17HS,EPS	SNA
2	BN92-01009G	-	ASSY BOX	GY17HS,EDC	SNA
3	BH68-00329A	BOX	LABEL BAR CODE-02	ALL,MPRII,DOM,EXPORT,MOJO 90G,WHT	SNA
3	BH75-10529C	BOX	UNIT-HANDLE/PACKING	S/M170MP,PE-LD,PE-HD,-,WHITE,-	SA
4	BN72-60001A	CIS	LEVER-TOP	LSD210TL,PE-LD,WHITE,TFT_LCD	SNA
4	BN72-60002C	CIS	LEVER-BOTTOM	S/M170MP,PE-HD,BLUE	SNA
3	BN69-00716A	BOX	BOX	S/M173VT(GY17HS) W/W,SW4,YEL,A-1,W468*D453*H213	SNA
2	BN92-01010F	-	ASSY LABEL	GY17HS,EDC	SNA
3	BN68-00593B	LABEL	LABEL RATING-00	GY17HS(GH17LS),SS,PE,TO.05,90X45,BLK,POLYESTER,EDC	SNA
2	BN92-01011Q	-	ASSY ACCESSORY	GY17HS,EDC	SNA
3	BN96-00952H	UNIT/ACCESSORY	ASSY ACCESSORY	GY17HS,EDC	SA
4	0203-000214	ACCESSORY	TAPE-OPP MASKING	OPP/W50/CLR,TO.05,W50,L400000,	SNA
4	6902-000110	ACCESSORY	BAG PE	LDPE,TO.05,L356,W240,TRP,28,2,PE MARK	SNA
4	BH39-10007A	ACCESSORY	CBF POWER CORD	DET,250V/6A,H05VV-F,LP-34A/KKP	SA
4	BH68-00489A	ACCESSORY	MANUAL-03	RUSSIAN W/CARD,SER,RUSSIAN,RUSSIA,MOJO100G	SNA
4	BH68-00522A	ACCESSORY	MANUAL USERS-01	P/CORD SETUP GUIDE,SYNCMaster,EN,W/W,MOJO100G,250,250,00	SNA
4	BH68-70438A	ACCESSORY	CARD-BLOC WARRANTY-09	TFT LCD,BASIC,EU,MOJO,100G,W21	SNA
4	BH68-70448A	ACCESSORY	CARD-01	TFT LCD,SRC,RUSSIA,S/W,120,W210*L120,INSTALL CARD	SNA
4	BN96-00594L	ACCESSORY	ASSY MANUAL P-00,IB+QSG	173VT,SyncMaster,W/W,18Lang,BN59-355L+BH68-376L	SNA
5	BH68-00376L	Q_SETUP	MANUAL-01	LCDQUICK SETUP GUIDE,SYNCMaster,E/F/S/G/P/L,13LANGS,W/W,MOJO100G,298,420	SA
5	BN59-00355L	IB	S/W DRIVER-00,IB	GY17HS,W/W,SyncMaster,18Lange	SNA

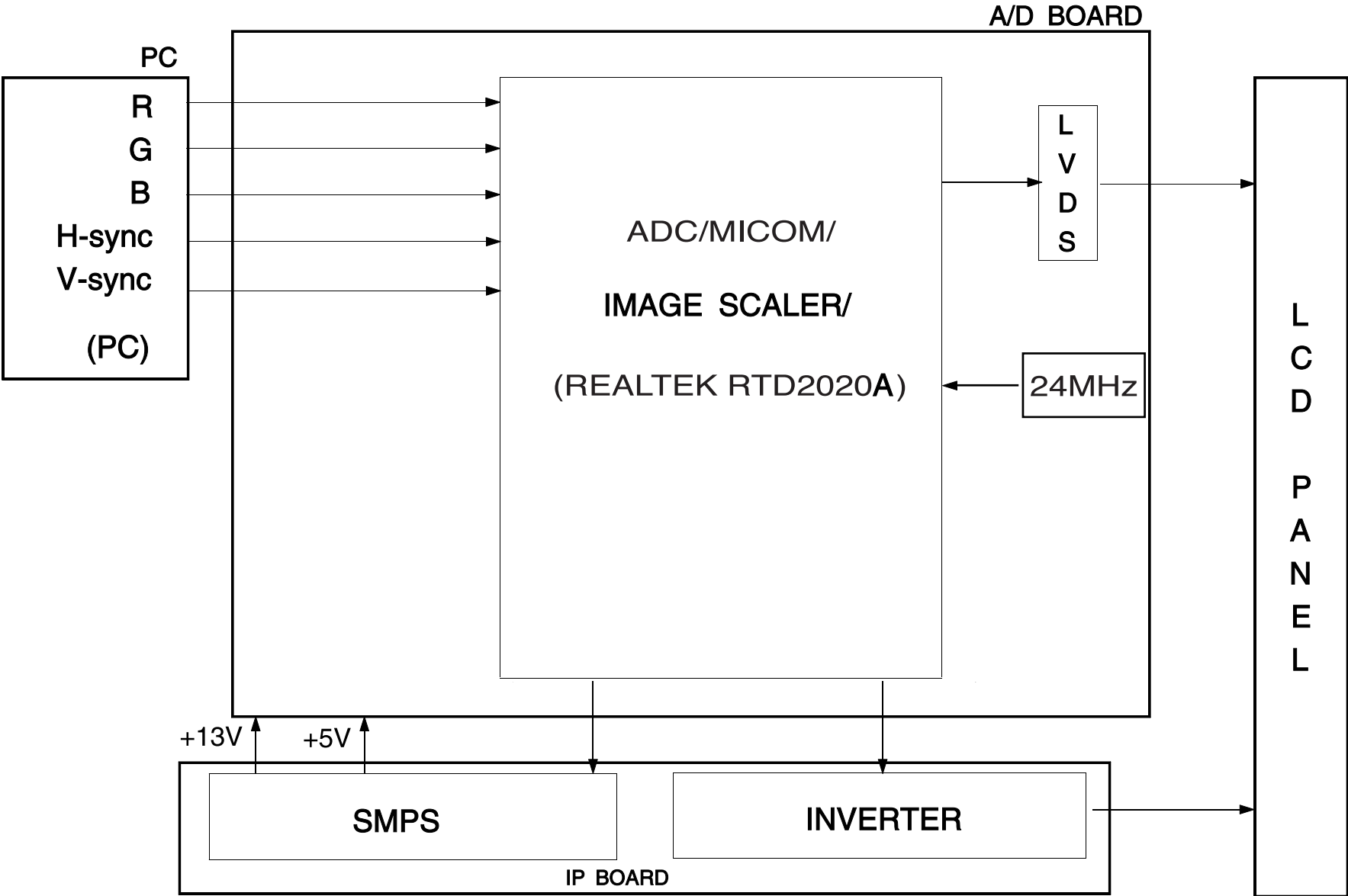
8 Block Diagram

* This Document can not be used without Samsung's authorization.

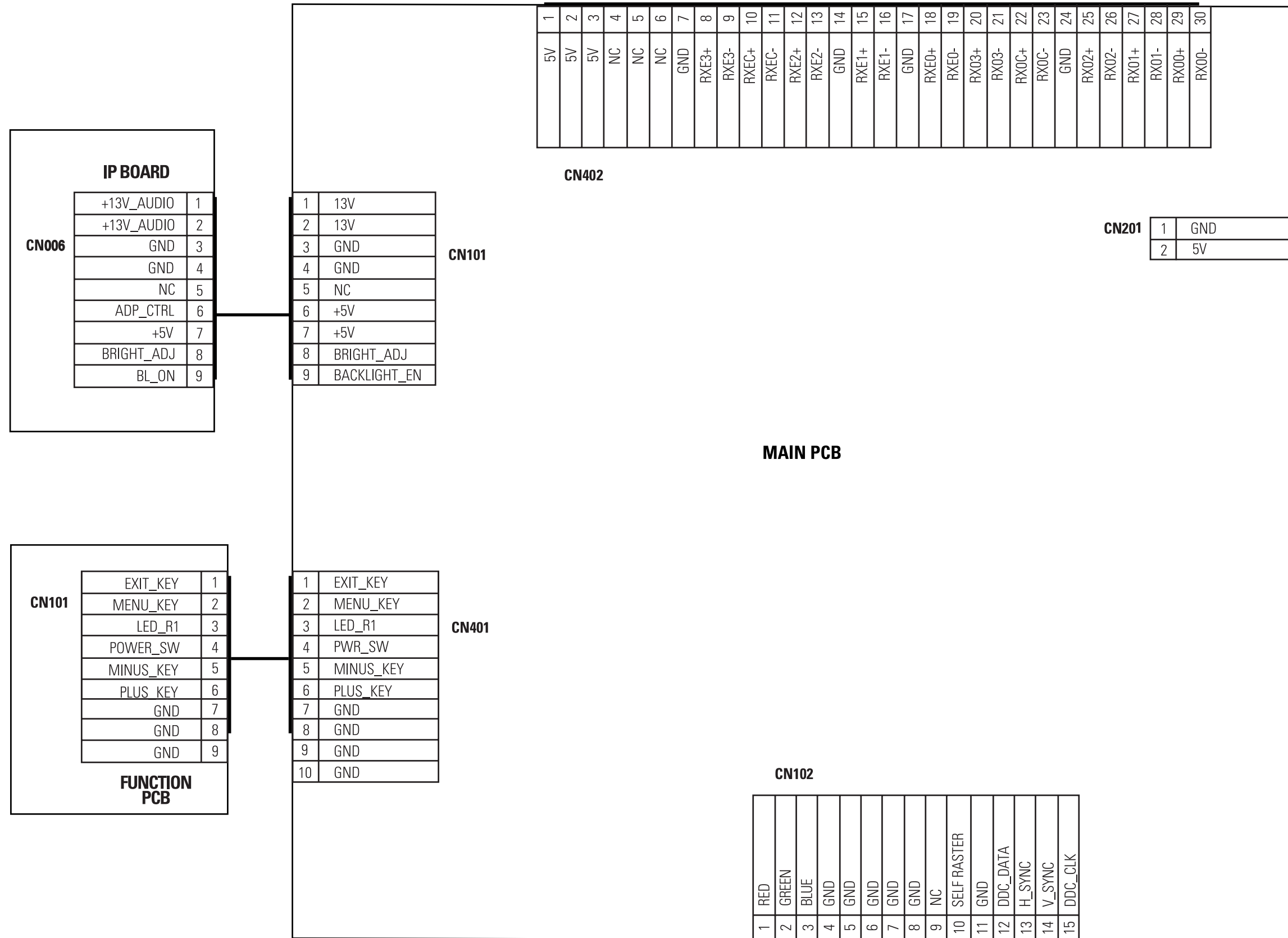
8-1 GY17HS*



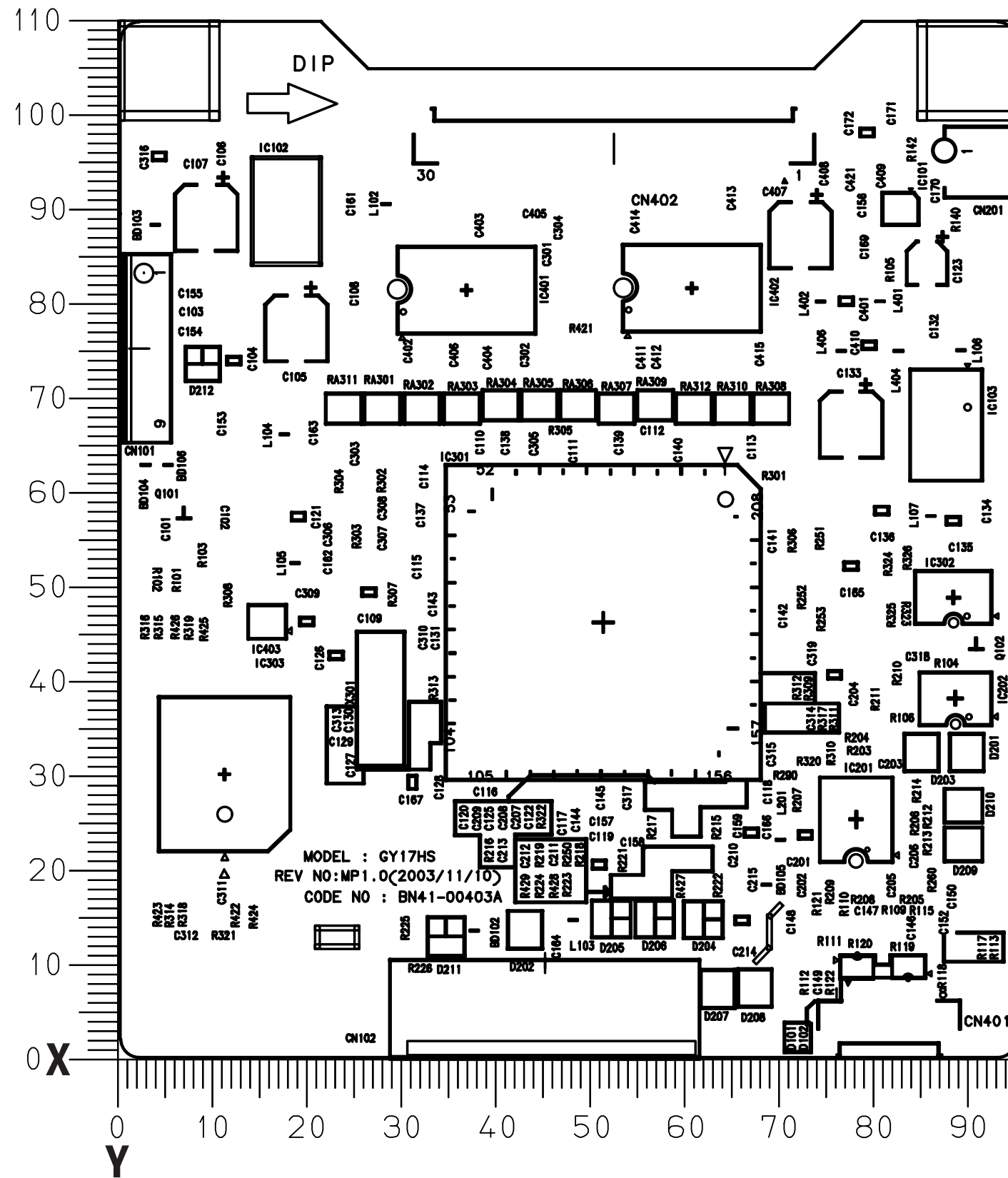
8-2 GY17HSS*/GY17HSG*



9 Wiring Diagram



10 PCB Layout



Loc. No.	Description	X	Y
DIODE			
D101	DIODE-ZENER	78.07	9.72
D102	DIODE-ZENER	83.55	9.57
D201	DIODE-ZENER	89.72	32.40
D202	DIODE-ZENER	42.89	13.58
D203	DIODE-ZENER	84.94	32.40
D204	DIODE-SWITCHING	61.86	14.72
D205	DIODE-SWITCHING	52.10	14.80
D206	DIODE-SWITCHING	56.70	14.80
D207	DIODE-ZENER	63.30	7.30
D208	DIODE-ZENER	67.25	7.40
D209	DIODE-ZENER	89.37	22.64
D210	DIODE-ZENER	89.37	26.74
D211	DIODE-SWITCHING	34.49	12.88
D212	DIODE-ZENER	8.75	73.65
IC			
IC101	FET-SILICON	82.70	90.10
IC102	IC-VOLTAGE REGULATOR	17.62	89.83
IC103	IC-POS.FIXED REG.	87.51	67.26
IC201	IC-TTL	78.01	25.29
IC202	IC-EEPROM	88.51	38.12
IC301	IC-LCD CONTROLLER	51.20	46.20
IC302	IC-EEPROM	88.30	48.84
IC303	IC303_SOCKET	11.09	30.09
IC401	IC-TRANSMITTER	36.70	81.50
IC402	IC-TRANSMITTER	60.60	81.70
IC403	IC-VOL. DETECTOR	15.58	46.27
TRANSISTOR			
Q101	TR-SMALL SIGNAL	6.72	57.27
Q102	TR-SMALL SIGNAL	90.70	43.40

* This Document can not be used without Samsung's authorization.

11-2 Schematic Diagram

