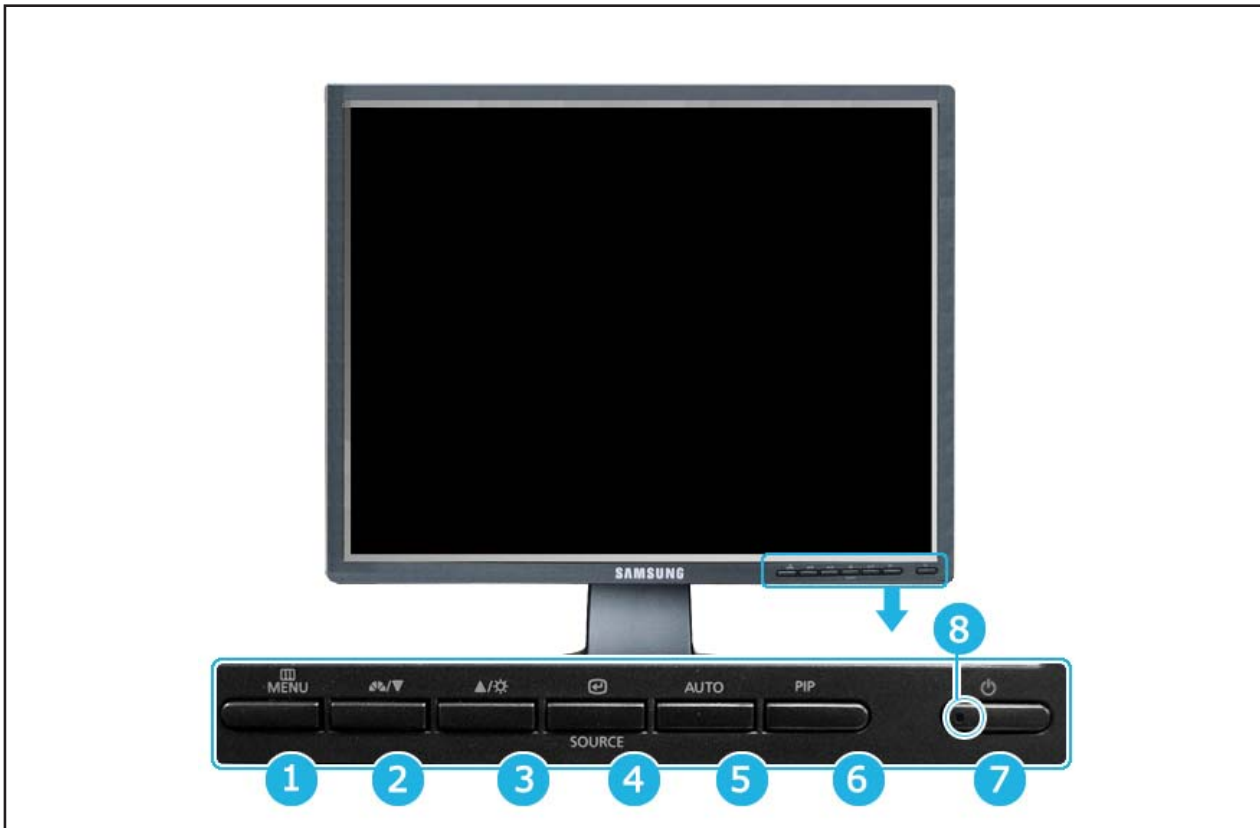


## 10 Operating Instructions and Installation

### 10-1 Front



#### 1. MENU button [ ]

- Opens the OSD menu.

Also use to exit the OSD menu or return to the previous menu.

#### 2,3. Adjust buttons

- These buttons allow you to adjust items in the menu.

#### 2. Analog/Digital(PC), MagicBright button [ ]

- MagicBright is a new feature providing the optimum viewing environment depending on the contents of the image you are watching. Currently four different modes are available: Custom, Entertain, Internet, and Text. Each mode has its own pre-configured brightness value. You can easily select one of four settings by simply pressing MagicBright control buttons.

1) Custom Although the values are carefully chosen by our engineers, the pre-configured values may not be comfortable to your eyes depending on your taste.

If this is the case, adjust the brightness and contrast by using the OSD menu.

2) Entertain : High brightness For watching motion pictures such as a DVD or Video CD.

3) Internet : Medium brightness For working with a mixture of images such as text and graphics.

4) Text : Normal brightness For documentations or works involving heavy text.

#### Digital(DVD)/Video/S-Video Mode button

- The Monitor has four automatic picture settings ("Dynamic", "Standard", "Movie" and "Custom") that are preset at the factory. You can activate either Dynamic, Standard, Movie, or Custom. You can select "Custom" which automatically recalls your personalized picture settings.

1) Dynamic Select this mode to view a sharper image than in "Standard" mode.

2) Standard Select this mode when the surroundings are bright. This also provides a sharp image.

3) Movie Select this mode when the surroundings are dark. This will save power and reduce eye fatigue.

## 10 Operating Instructions and Installation

4) Custom Select this mode when you want to adjust the image according to your preferences.

### 3. Brightness button [ ]

- When OSD is not on the screen, push the button to adjust brightness.

### 4. Enter button [ ] / SOURCE button

- Activates a highlighted menu item. / Push the 'SOURCE', then selects the video signal while the OSD is off. (When the source button is pressed to change the input mode, a message appears in the upper left of the screen displaying the current mode -- Analog, Digital, Video and S-Video input signal.)

Note : Changing the source is allowed only in external devices that are connected to the monitor at the time.

### 5. AUTO button

(Available in analog mode only)

- When the 'AUTO' button is pressed, the Auto Adjustment screen appears as shown in the animated screen on the center. Auto adjustment allows the monitor to self-adjust to the incoming video signal. The values of fine, coarse and position are adjusted automatically.

### 6. PIP button

( Available in Analog/Digital(PC) Mode Only )

- In Analog or Digital Mode, turns on Video screens in PIP Mode.

### 7. Power button

- Use this button for turn the monitor on and off.

### 8. Power Indicator

- This will enable you to see the overall power status of the system.

## 10-2 Rear

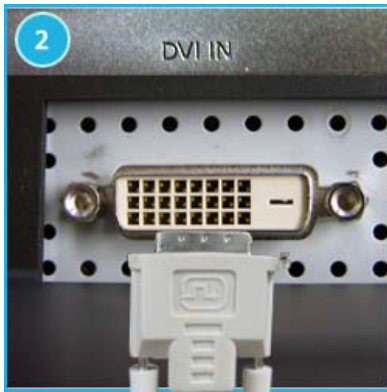


### POWER S/W

: Switch the monitor on and off.

### POWER IN

: Power cord, plugs into monitor and wall receptacle.



**DVI port (Source : Digital)**

: Connect the DVI cable to the DVI port on the back of your monitor.



**D-sub 15-pin port**

: Connect the signal cable to the 15-pin, D-sub connector on the back of your monitor.



**VIDEO / S-VIDEO**

**- VIDEO**

: External device (video) input terminal

**- S-VIDEO**

: External device (S-video) input terminal



**Kensington Lock**

: The Kensington lock is a device used to physically fix the system when using it in a public place.  
(The locking device has to be purchased separately.)

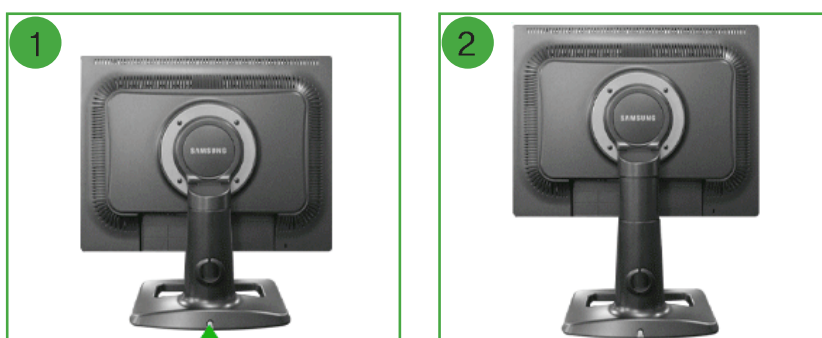
### - Pivot Stand



### - Stand Height Adjustment

1. Press the top side of the stand and then push the button at the rear bottom of the stand.
2. You can adjust the stand height using this button.

⚠ When you are using a stand height as maximum , it will go down a little bit from spring elasticity.



## 10-3 Using the Stand

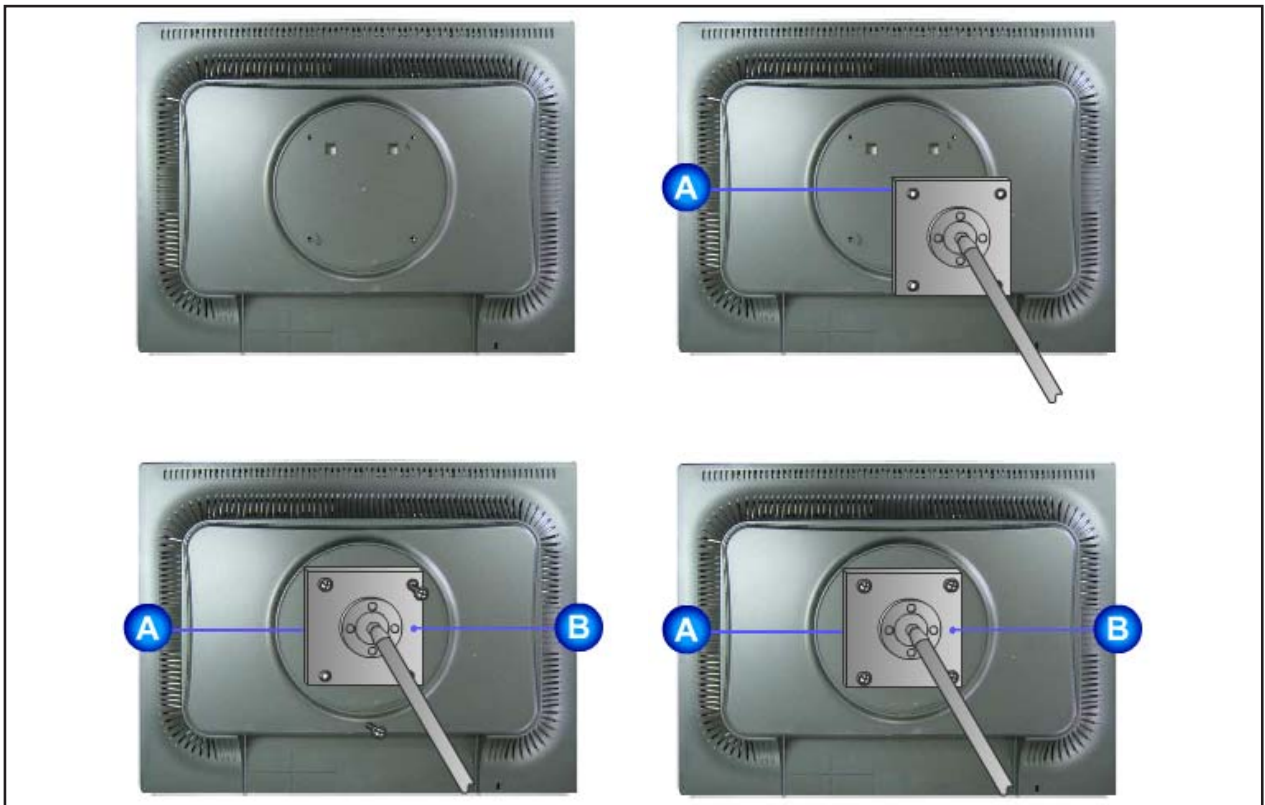
### 10-3-1 Removing the base



1. Turn off your monitor and unplug its power cord.
2. Lay the LCD monitor face-down on a flat surface with a cushion beneath it to protect the screen.
3. Remove four screws(A) and then remove the Stand from the LCD monitor.

### 10-3-2 Attaching a Base

- This monitor accepts a 100mm x 100mm VESA-compliant mounting interface pad.



## 10 Operating Instructions and Installation

### **A. Monitor**

### **B. Mounting interface pad**

1. Turn off your monitor and unplug its power cord.
2. Lay the LCD monitor face-down on a flat surface with a cushion beneath it to protect the screen.
3. Remove four screws and then remove the stand from the LCD monitor.
4. Align the mounting interface Pad with the holes in the rear cover mounting pad and secure it with four screws that came with the arm-type base, wall mount hanger or other base.