

PS776

Service Manual

TABLE OF CONTENTS

SERVICE WARNING	2
A. IMPORTANT SAFETY INSTRUCTION	2
B. SPECIFICATIONS	3
C. TIMING CHART	4
D. CONTROL LOCATION	6
E. CONDUCTION VIEW	7
F. ADJUSTMENT PROCEDURE	12
G. TROUBLE SHOOTING HINTS	13
H. REPLACEMENT PARTS LIST	17
I. BLOCK DIAGRAM	28
J. SCHEMATIC DIAGRAM	29

WARNING

To prevent from fire or shock hazard,do not expose monitor to any rain or any form of water.High voltage is inside the monitor so please do not remove the back cover of the cabinet if you are not a qualified monitor engineer.Contact the local dealer or the nearest **Proview** branch office if you need help.

A. IMPORTANT SAFETY INSTRUCTION

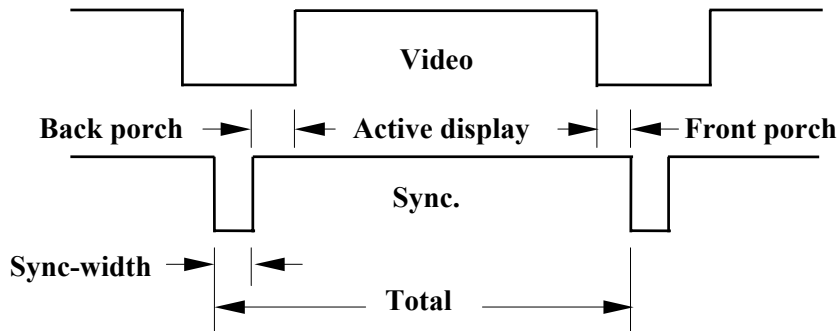
Prior to using this service manual,please ensure that you have carefully followed all the procedures outlined in the user's manual for this product.

1. Read all of these instructions.
2. Save these instructions.
3. Follow all warnings and instructions a marked on the product.
4. Unplug this product from the wall outlet before cleaning.Do not use liquid cleaners or aerosol cleaners, use a damp cloth for cleaning.
5. Do not use this product near water.
6. Do not place this product on an unstable cart,stand or table.The product may fall,causing serious damage to the product.
7. Slots and openings in the cabinet and the back or bottom are provided for ventilation,to ensure reliable operation of the product and to protect it from overheating,those openings must not be blocked or covered.The openings should never be blocked by placing the product on a bed,sofa, rug, or other similar surface.This product should not be placed in a built-in installation less proper ventilation is provided.
8. This products should be operated from the type of power source indicated on the marketin label. If you are not sure of the type of power available, consult your dealer or local power company
9. This product is equipped with a 3-wire grounding type plug,a plug having a third (grounding) pin.This plug will only fit into a grounding-type power outlet.This is a safety feature,if you are unable to insert the plug into the outlet,contact your electrician to replace your obsolete outlet.Do not defeat the purpose of the grounding-type plug.
10. Do not allow anything to rest on the power cord.Do not locate this product where persons will walk on the cord.
11. If an extension cord is used with this product,make sure that the total of the ampere ratings on the product plugged into the extension cord to the waplugged into outlet does not exceed 15 ampere.
12. Never push objects of any kind into this product through cabinet slots as they may touch dangerous voltage points or short out parts that could result in a risk of fire or electric shock.Never spill liquid of any kind on the product.
13. Do not attempt to service this product yourself,as opening or removing covers may expose you to dangerous voltage points or other risks.Refer all servicing to service personnel.
14. Unplug this product from the wall outlet and refer servicing to qualified service personnel under the following conditions.
 - a. When the power cord or plug is damaged or frayed.
 - b. If liquid has been spilled into the product.
 - c. If the product has been exposed to rain or water.
 - d. If the product does not operate normally,when the operating instructions are followed.Adjust only those controls that are covered by the operating instructions since improper adjustment of other controls may result in damage and will often require extension work by a qualified technician to restore the product to normal operation.
 - e. If the product has been dropped or the cabinet has been damaged.
 - f. If the product exhibits a distinct change in performance,indicating a need for service.

B. SPECIFICATIONS

1. Maximum Resolution	1280 x 1024 @ 75Hz
2. Recommend Resolution	1280 x 1024 @ 60Hz
3. Synchronization Range	
Horizontal	31 – 80 KHz
Vertical	60– 75 Hz
4. Active Display Area	337mm (H) x 270mm (V)
5. Dot Pitch	0.264(H) x 0.264(V) mm
6. Support display colors	16.7M color
7. Contrast Ratio (Typical)	450
8. Luminance of White	260cd/m ²
9. Bandwidth	135MHz
10. User Control	4 Key Switch
11. OSD Function	Brightness, Contrast, H-Pos, V-Pos, H. Size, Phase, Color Select, Auto, Reset, Language, OSD Adjust, Exit
12. View Angle CR=5	
Horizontal	80 , 80 Degrees
Vertical	80 , 80 Degrees
13. Power Source	100 – 240 Vac 60 / 50 Hz
14. Power Consumption	48W (max.)
15. Connection Type	15 Pin D Type
16. Input Signal	
Video	Analog R.G.B. , 0.7Vp-p / 75 Ohms
Sync.	TTL level, positive or negative polarity
17. Color Temperature	Cool / Warm
18. Dimension (WxHxD)	452mm x 465mm x 142mm
19. Monitor Weight	4.8Kg
20. Base Operation	
Tilt	0 / + 15 degree
21. Power Saving	
ON	< 48W
STAND BY	< 5W
OFF	< 5W
22. Signal Connector Pin Assignment	
Pin No.	
	1. Red
	2. Green
	3. Blue
	4. Ground
	5. Self Test
	6. Red Ground
	7. Green Ground
	8. Blue Ground
	9. V _{DD} from PC for DDC
	10. Sync. Ground
	11. Ground
	12. SDA (For DDC)
	13. Horizontal Sync.
	14. Vertical Sync.
	15. SCL (For DDC)
23. Audio signal	3.5Φ stereo phone jack 2.5+2.5W 8Ω Speaker

C.TIMING CHART



Modes \ Preset	VGA	VGA	VESA	VESA	VESA	VESA	VESA
	720X400	640X480	640X480	640X480	800X600	800X600	800X600
Pixel clock (MHz)	28.325	25.175	31.500	31.500	36.000	40.000	50.000
H-Frequency (KHz)	31.472	31.469	37.861	37.500	35.156	37.879	48.077
H-Total (μs)	31.774	31.778	26.413	26.667	28.444	26.400	20.800
H-Active Display (μs)	25.419	25.422	20.317	20.317	22.222	20.000	16.000
H-Blanking (μs)	6.355	6.356	6.095	6.349	6.222	6.400	4.800
Front Porch (μs)	0.635	0.636	0.762	0.508	0.667	1.000	1.120
H-Sync-width (μs)	3.813	3.813	1.270	2.032	2.000	3.200	2.400
H-Back Porch (μs)	1.906	1.907	4.063	3.810	3.556	2.200	1.280
V-Frequency (Hz)	70.1	59.94	72.81	75.0	56.25	60.3	72.2
V-Total (ms)	14.267	16.683	13.735	13.333	17.778	16.579	13.853
V-Active Display (ms)	12.710	15.253	12.678	12.800	17.067	15.840	12.480
V-Blanking (ms)	1.557	1.430	1.057	0.533	0.711	0.739	1.373
V-Front Porch (ms)	0.413	0.318	0.238	0.027	0.028	0.026	0.770
V-Sync-width (ms)	0.064	0.064	0.079	0.080	0.057	0.106	0.125
V-Back Porch (ms)	1.080	1.049	0.740	0.427	0.626	0.607	0.478
H/V Sync. Polarity	- +	- -	- -	- -	+ +	+ +	+ +
Interlace	NONE	NONE	NONE	NONE	NONE	NONE	NONE

Modes \ Preset	VESA 800X600	VESA 1024X768	VESA 1024X768	VESA 1024X768	VESA 1280X1024	VESA 1280X1024
Pixel clock (MHz)	49.500	65.000	75.000	78.750	108.00	135.00
H-Frequency (KHz)	46.875	48.363	56.476	60.023	63.981	79.976
H-Total (μs)	21.333	20.677	17.707	16.660	15.630	12.540
H-Active Display (μs)	16.162	15.754	13.563	13.003	11.852	9.481
H-Blanking (μs)	5.172	4.923	4.053	3.657	3.778	3.022
Front Porch (μs)	0.323	0.369	0.320	0.203	0.444	0.119
H-Sync-width (μs)	1.616	2.092	1.813	1.219	1.037	1.067
H-Back Porch (μs)	3.232	2.462	1.920	2.235	2.296	1.837
V-Frequency (Hz)	75.0	60.0	70.1	75.0	60.0	75.0
V-Total (ms)	13.333	16.666	14.272	13.328	16.661	13.329
V-Active Display (ms)	12.800	15.880	13.599	12.795	16.005	12.804
V-Blanking (ms)	0.533	0.786	0.673	0.533	0.656	0.525
V-Front Porch (ms)	0.021	0.062	0.053	0.017	0.016	0.013
V-Sync-width (ms)	0.064	0.124	0.106	0.050	0.047	0.038
V-Back Porch (ms)	0.448	0.600	0.513	0.466	0.594	0.475
H/V Sync. Polarity	+ +	- -	- -	+ +	+ +	+ +
Interlace	NONE	NONE	NONE	NONE	NONE	NONE

D. CONTROL LOCATION

Font control panel



1. Menu Button
2. Select Button
3. Auto Button
4. Power Button
5. LED (Power Display)

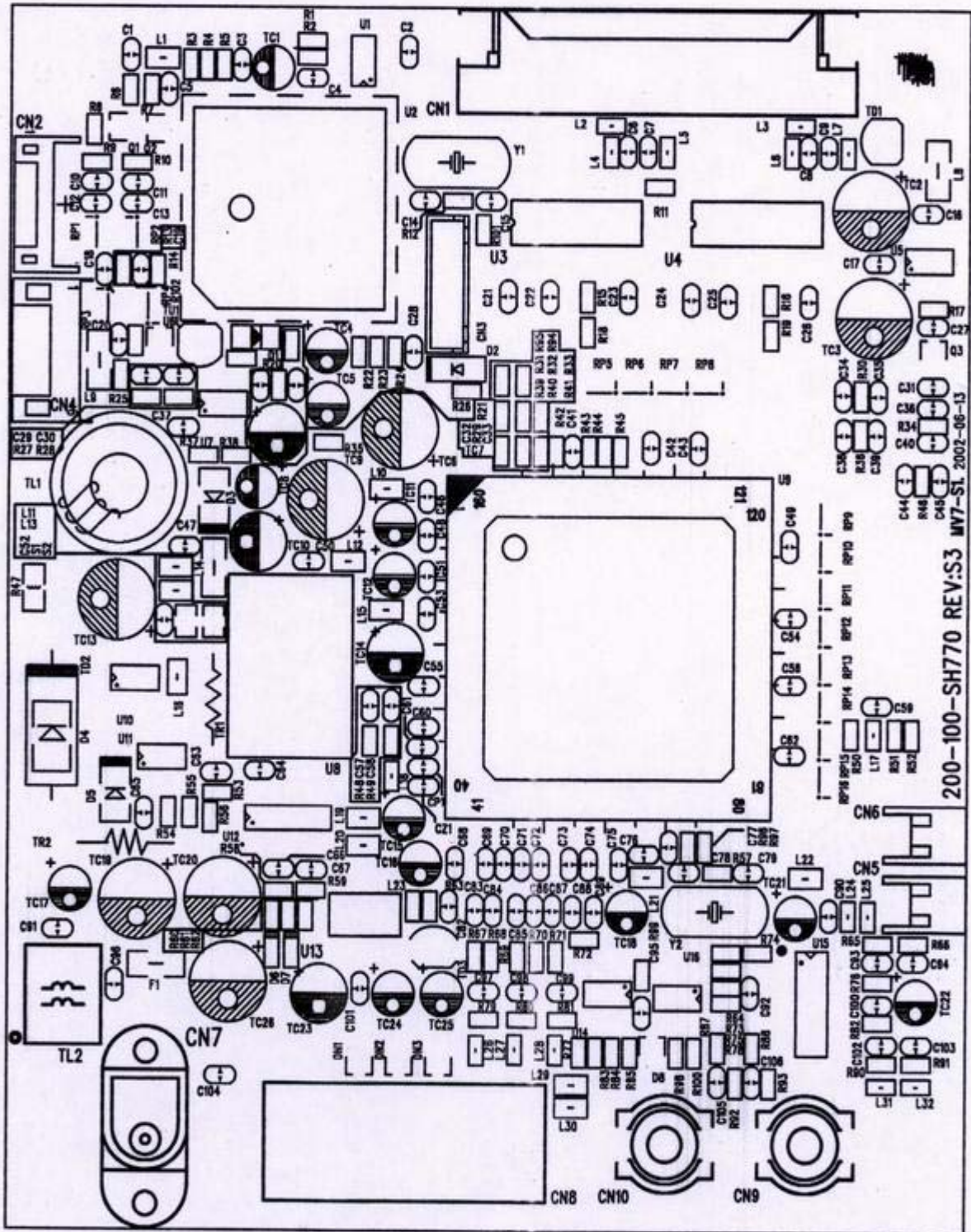
Rear panel



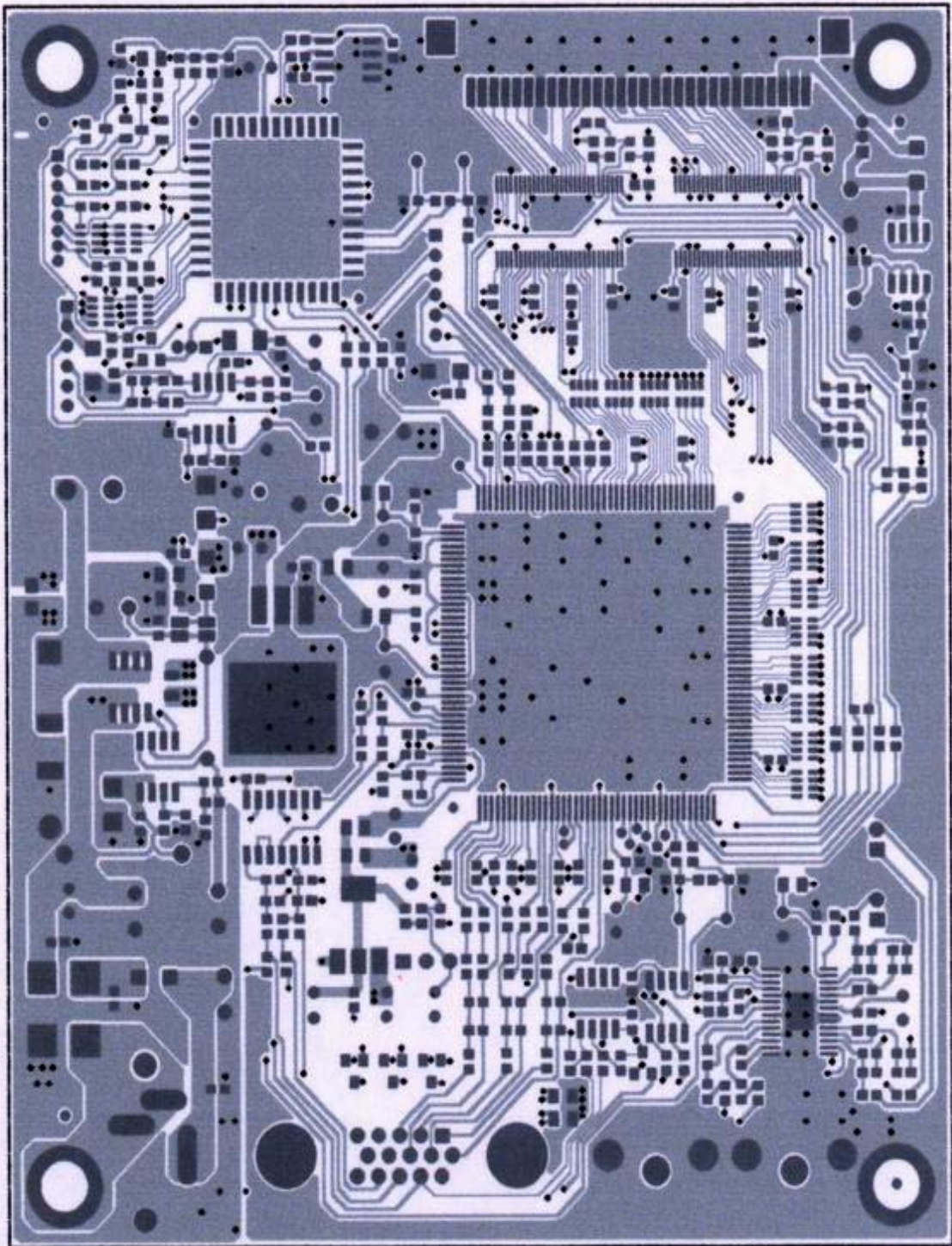
1. VGA Signal Cable
2. Power jack
3. Line in jack

E. CONDUCTION VIEW

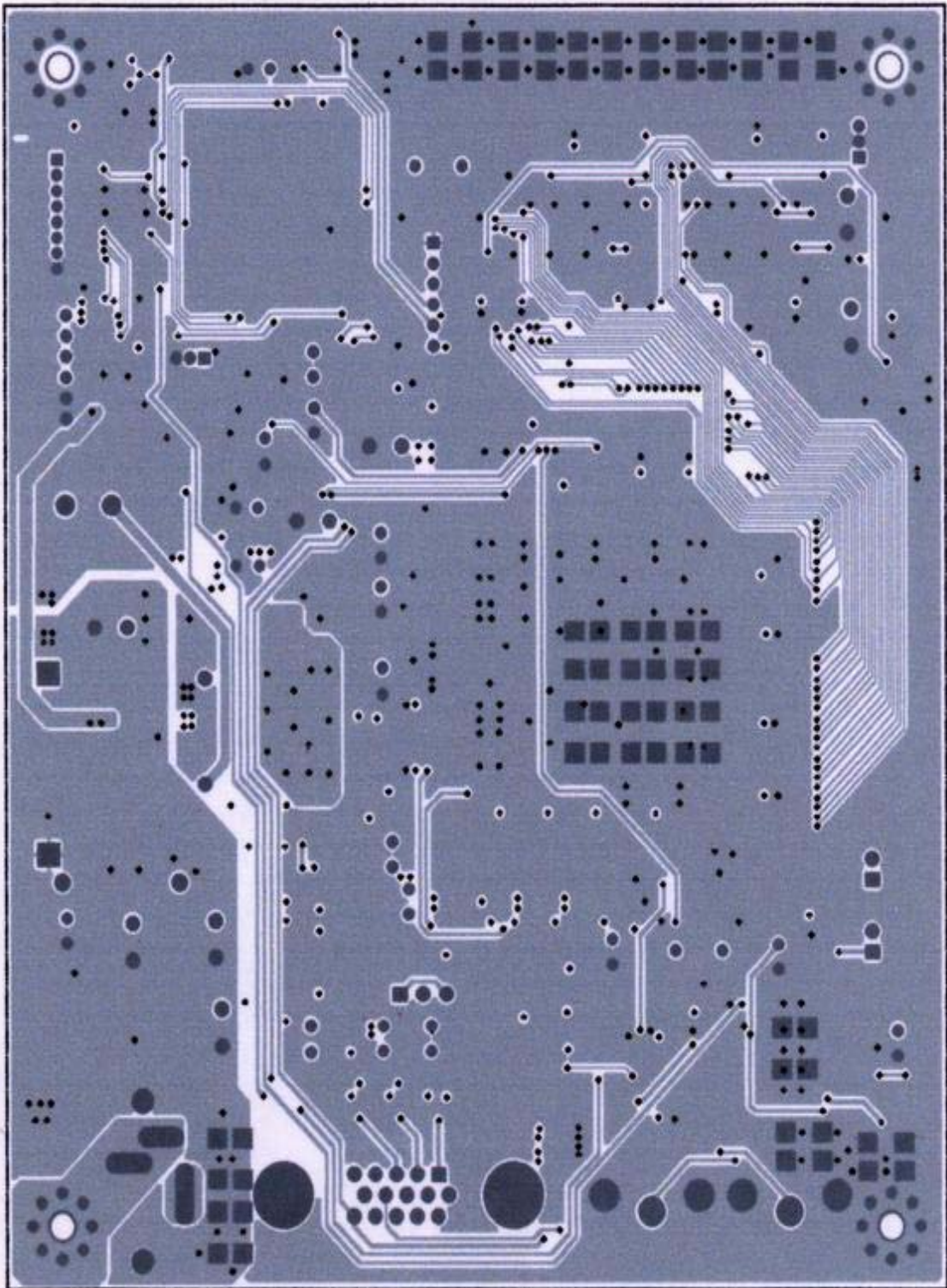
MAIN BOARD (Component Side)



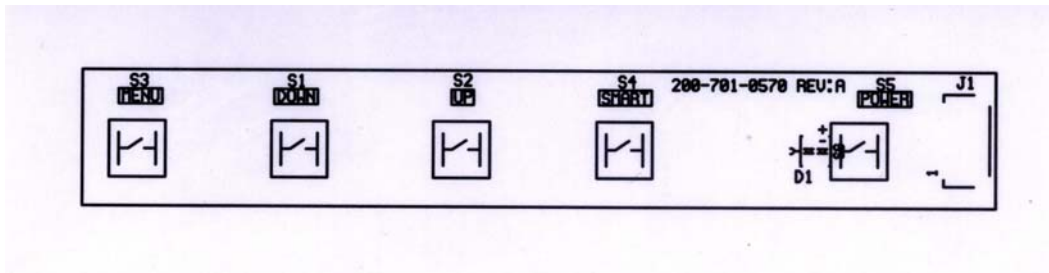
MAIN BOARD (Component Side)



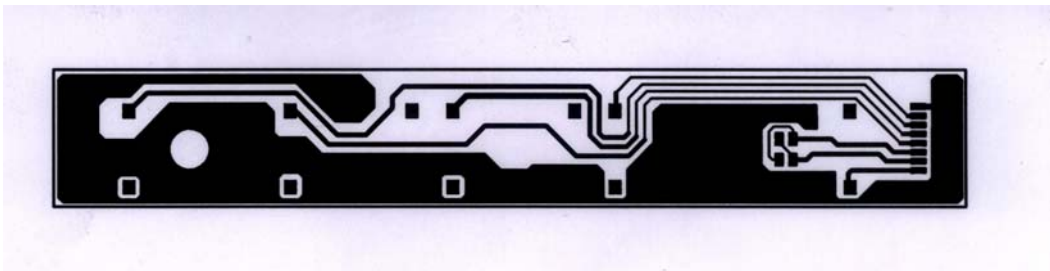
MAIN BOARD (Solid Side)



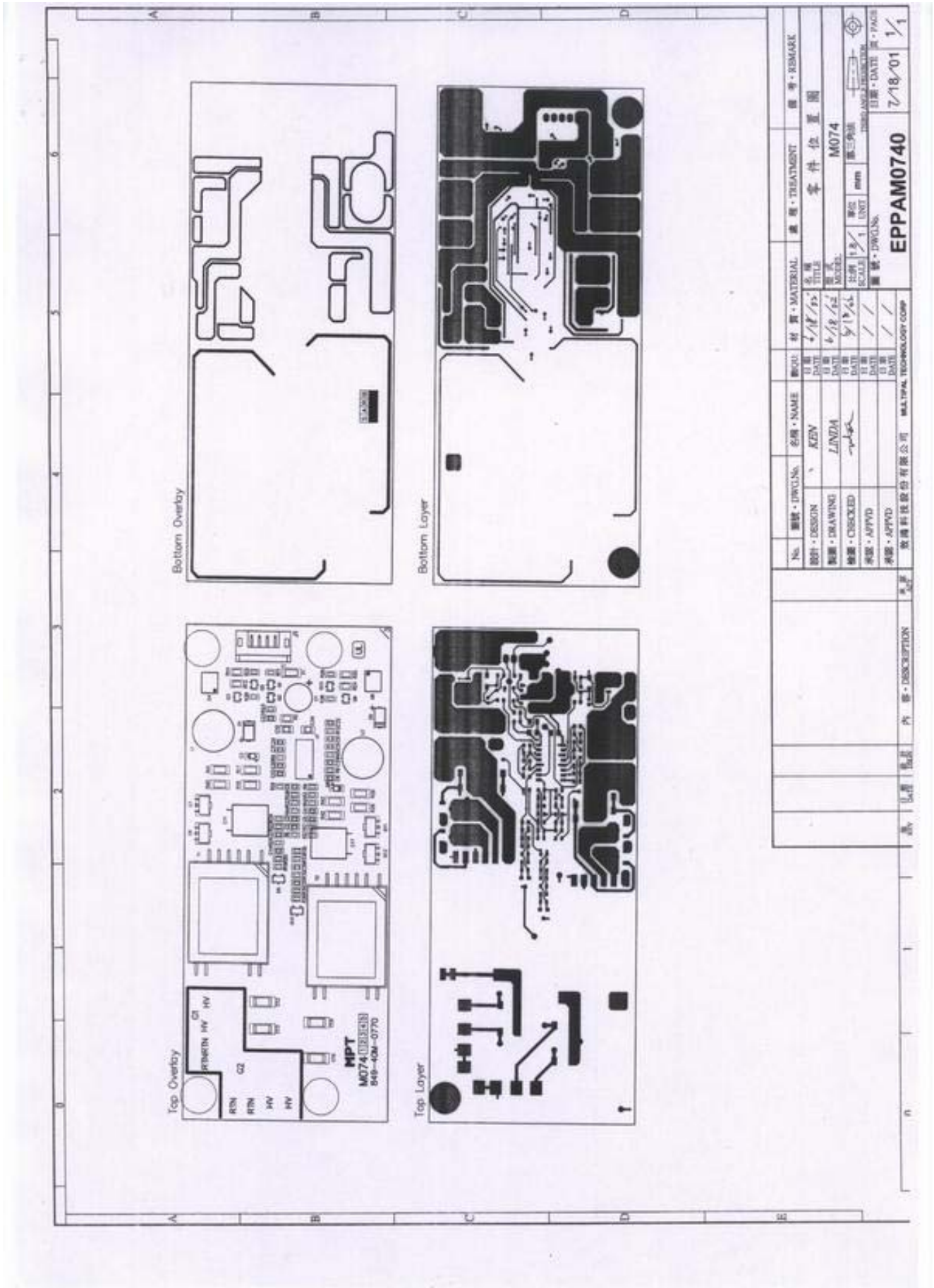
CONTROL BOARD (Component Side)



CONTROL BOARD (Solid Side)



INVERTER BOARD



No.	圖號 · DWG. No.	名稱 · NAME	圖號 · MATERIAL	處理 · TREATMENT	備註 · REMARK
1			4/18/95		
2			6/18/92		
3			5/18/94		
4					
5					
6					
7					
8					
9					
10					
11					
12					
13					
14					
15					
16					
17					
18					
19					
20					
21					
22					
23					
24					
25					
26					
27					
28					
29					
30					
31					
32					
33					
34					
35					
36					
37					
38					
39					
40					
41					
42					
43					
44					
45					
46					
47					
48					
49					
50					
51					
52					
53					
54					
55					
56					
57					
58					
59					
60					
61					
62					
63					
64					
65					
66					
67					
68					
69					
70					
71					
72					
73					
74					
75					
76					
77					
78					
79					
80					
81					
82					
83					
84					
85					
86					
87					
88					
89					
90					
91					
92					
93					
94					
95					
96					
97					
98					
99					
100					

EPPAM0740

日期 · DATE: 7/18/01

圖號 · DWG. No. M074

圖號 · DWG. No. M074

圖號 · DWG. No. M074

圖號 · DWG. No. M074

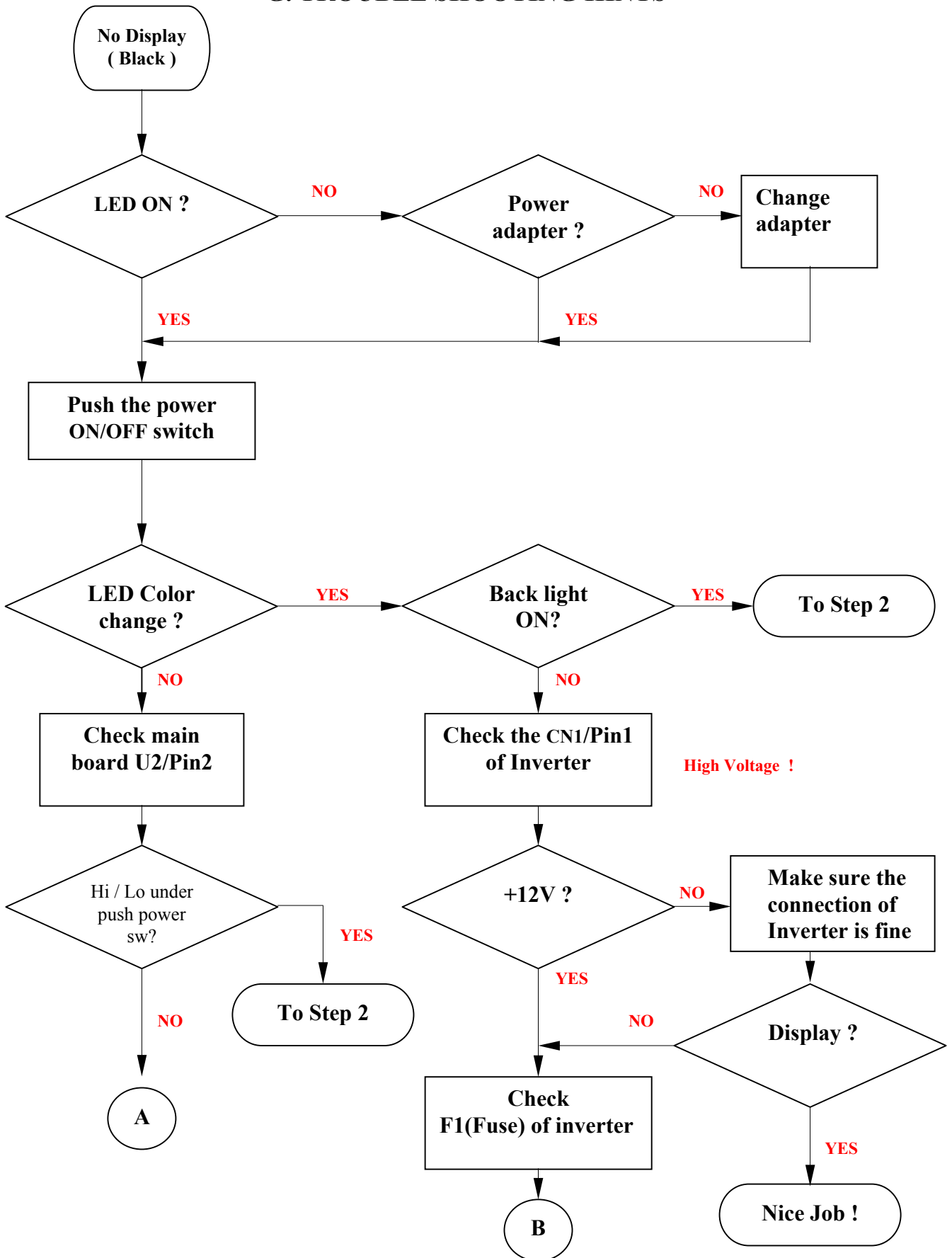
圖號 · DWG. No. M074

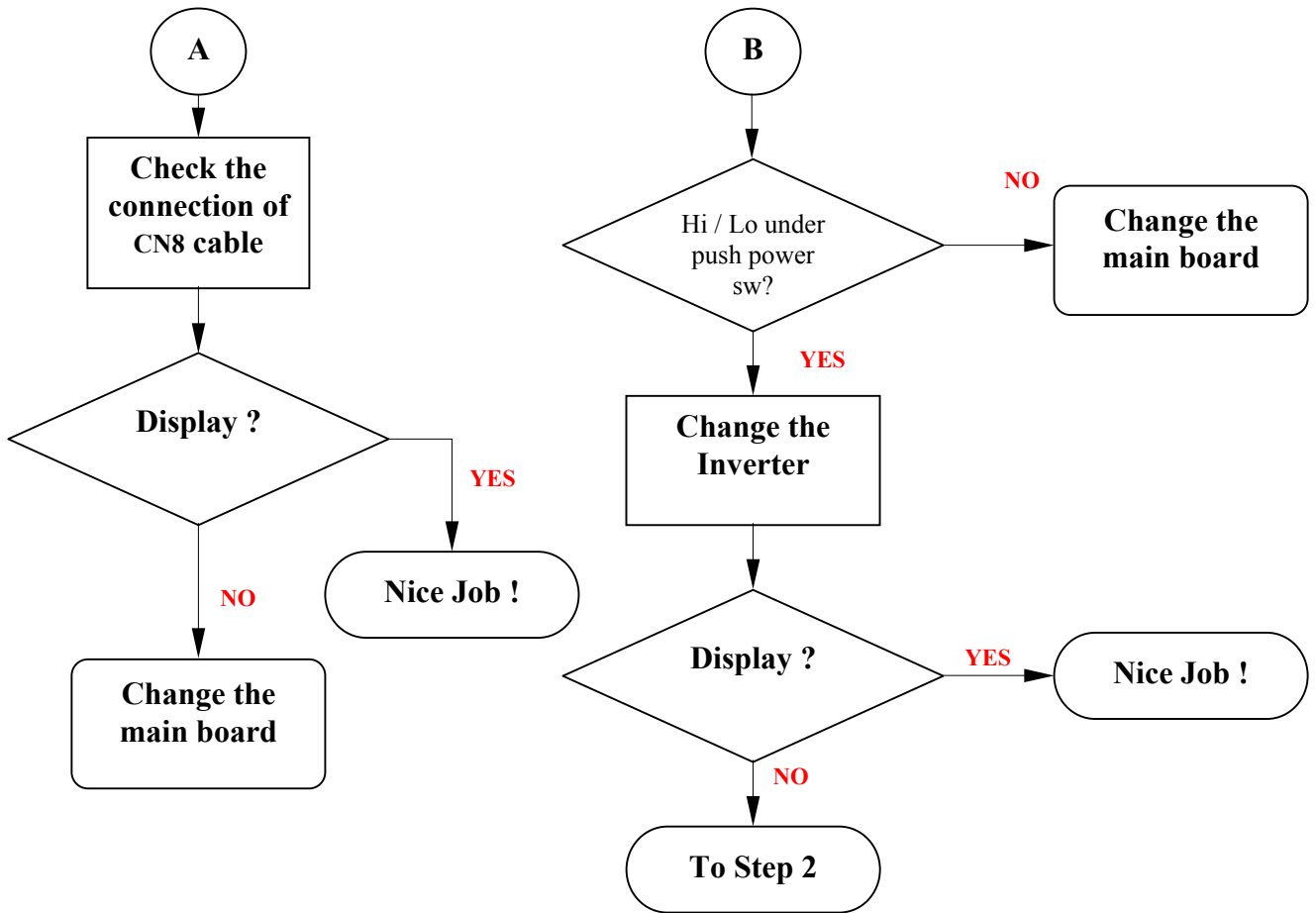
圖號 · DWG. No. M074

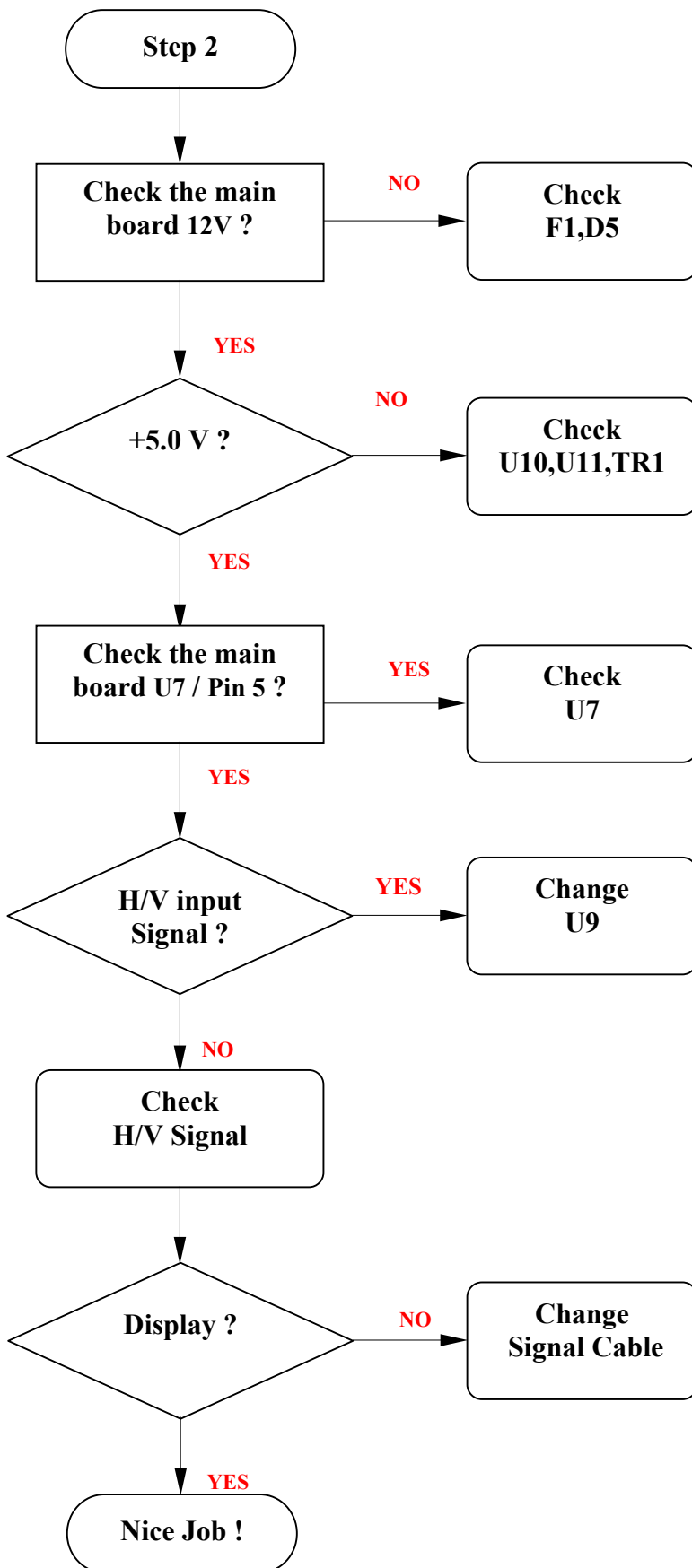
F. ADJUSTMENT PROCEDURE

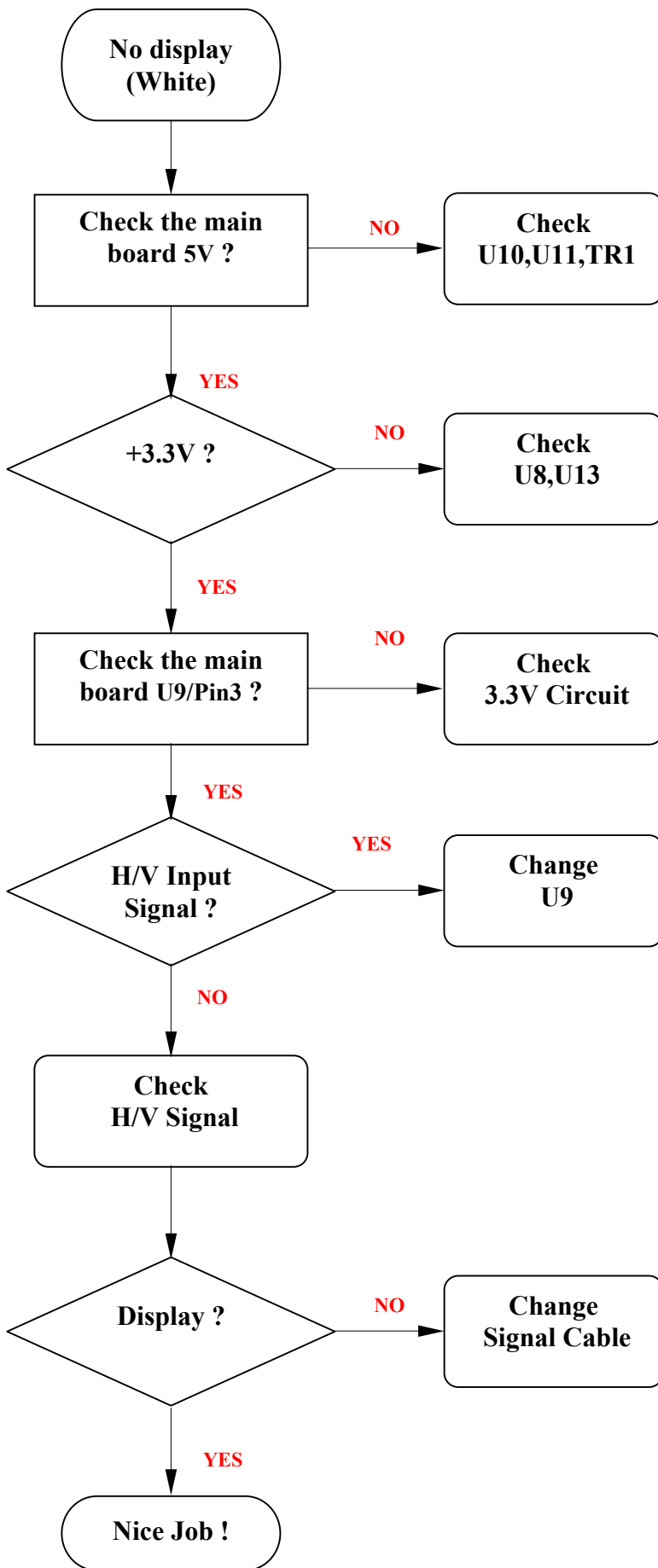
ITEM Program Menu.		# Test Meter * Test Point @ Pattern	Operation	Check Value
A	B+ Check	# Digital Voltmeter * CN7 @ Crosshatch Pattern (31.5KHz,640x480)	<ol style="list-style-type: none"> 1. Plug power cable into the adapter, check adapter power indicator light up green. 2. Make sure the voltage of the power plug (CN7) on the main PCB to the value shown at right. 	12.0V ±0.2V
B	Power Saving Check	# Wattmeter # PC or Pattern generator @ Crosshatch Pattern (31.5KHz,640x480)	<ol style="list-style-type: none"> 1. Unplug the signal cable into the monitor. 2. Turn the power switch of the monitor ON. 3. Check monitor power indicator light up orange. 4. Make sure the wattmeter value shown at right. 5. OSD will be display “NO SIGNAL” Picture. 	< 2.5W
C	Into Factory mode	# PC or Pattern generator @ Crosshatch Pattern (31.5KHz,640x480)	<ol style="list-style-type: none"> 1. Hold < key, then turn the power switch of the monitor OFF. 2. Hold > key, then turn the power switch of the monitor ON. 3. You can into factory adjustment mode. 	
D	Auto mode Check	# PC or Pattern generator @ Crosshatch Pattern (1024x768/60Hz)	<ol style="list-style-type: none"> 1. Press and release the MENU knob to activate the OSD menu. 2. Move the OSD to the AUTO function, press MENU key auto adjust display mode to its utmost performance according to VGA setting. 3. In the event of the display image needs further adjustment 	
E	White Balance Adjust	# PC or Pattern generator @ White Pattern (1024x768/60Hz)	<ol style="list-style-type: none"> 1. Move the OSD to the COLOR mode (AUTO COLOR). 2. set color is 9300°K using the OSD, Check the value shown at right. $Y = 220 \pm 0.1FL$ $x = 0.283 \pm 0.01$ $y = 0.297 \pm 0.01$ 3. set color is 6500°K using the OSD, Check the value shown at right. $Y = 220 \pm 0.1FL$ $x = 0.313 \pm 0.01$ $y = 0.329 \pm 0.01$ 	
F	OSD Language Setting	# PC or Pattern generator	<ol style="list-style-type: none"> 1. Move the OSD to the LANGUAGE mode. 2. You can choose one of the eight language you need. 	

G. TROUBLE SHOOTING HINTS









H. REPLACEMENT PARTS LIST

NO	Parts No.	Description	Part Location	Q'ty
1	988-5P2-1029C	PS776 FCC/UL TCO99		1
2	002-001-CEPOV-B	CE Declaration		1
3	002-001-TCO9	TCO99 Declaration		1
4	002-F00-PS576-A	5 Language User Manual		1
5	003-002-0848-AM	CARTON LABEL 70*40mm.		1
6	003-002-0848-A	CARTON LABEL 70*40mm.		1
7	003-H01-AS576	TCO99 LBL FOR PLANE		1
8	005-001-PS776	PS776 No Brand Carton		1
9	153-000-PS576	PS576 BACK LBL		1
10	160-00L-GA780	GA780 POLYFORM L.		1
11	160-00R-GA780	GA780 POLYFORM R.		1
12	170-000-0848C	PE BAG 0.07mm 14*30.5cm.		2
13	170-005-LCD7	LCD 17"PE BAG		1
14	170-005-VM541	LT-541 PE BAG 300*200mm.		2
15	846-120-D0AL-TA	12V 48W adapter		1
16	999-P21-PS776-E	PS776 TUV/GSTCO99		1
17	705-570-650A	AU 17" SILM M170EN05 V.1		1
18	849-40M-0770	INVETER FOR 770.		1
19	899-00M-SH770-S4	SH770 M/B MRT IC AU.		1
20	851-00M-SH770-S4	SH770 M/B MRT IC AU DIP		1
21	152-000-SH570	TOSHIBA DC JACK SUPPORT NYLON.		1
22	232-R01-505T	DIP WR-C-5W 0.010ohm 5%	TR1,	1
23	330-100-16255	5mm EC 10uF 16V 105C M TP MI.	TC1,TC5,TC8,TC11,TC12, TC15,TC16,TC18,TC21, TC24,TC25,	11
24	330-101-16255	5mm EC 100uF 16V 105C M TP MI.	TC10,TC7,	2
25	330-220-16255	MINI CE 22uF/16V +-20% TP105°C	TC17,	1
26	330-221-16255	EC H:5mm 220uF16V +-20% 105C.	TC3,TC9,TC13,TC19,TC20, TC26,TC6,	7
27	330-2R2-50255	E.CAP 2.2UF/50V(4*5).	TC22,	1
28	330-470-16255	EC 47uF 16V 5*5 105C +-20%	TC14,TC23,	2
29	409-003-0110	DC-JACK	CN7,	1
30	409-003-0111-H	RCA JACK Red SCP606	CN9,	1
31	409-003-0112-H	RCA JACK White SCP606	CN10,	1
32	485-415-0005B	DB15 (D-SUB HD.15P BLUE	CN8,	1
33	504-000-MCP101	RESET IC MCP101-450HI/TO TO92.	TU1,	1

NO	Parts No.	Description	Part Location	Q' ty
34	504-007-A431	KIA431/KEC	TD3,	1
35	520-007-5822	IN5822(DIP)SHOTTKY 30V/3A ZZ	TD2,	1
36	531-110-49US	11.0592MHZ HC 49US CRYSTAL.	Y1,	1
37	531-240-49US-2	KTS CRYSTSL 24MHZ+HC-49US 20PF	Y2,	1
38	630-002-1008	JWT A2001 PITCH 2.00mm 2P.	CN5,CN6,	2
39	630-006-1008	JWT A2001 PITCH 2.00mm 6P.	CN4,	1
40	630-006-1009	BASE 6P.	CN3,	1
41	630-008-C001	JST 1.5mm HEADER ZR S8B-ZR.	CN2,	1
42	745-330-2062-3	33uH C4426-060128YB-UL.	TL1,	1
43	852-00M-SH770-S4	SH770 M/B MRT IC AU SMD		1
44	003-H03-ALL9	ALL ICT OK LBL 8*8MM (白)		1
45	200-100-SH770-S4	SH770 M/B. Version:S4		1
46	281-031-11004	RES 110ohm +-1% 1/10W 0603 SMD	R201,	1
47	281-031-20014	SMD R 2K 1% 0603.	R56,	1
48	281-031-21504	SMD R0603 215ohm 1%	R202,	1
49	281-031-68014	SMD R 6.8K 0603 1%.	R53,	1
50	281-035-0R04	RES 0ohm 5% 1/10W 0603 SMD.	R99,R15,R16,R25,R27,R48, R49,R62,R67,R68,R69,R70 , R71,R72,R74,	15
51	281-035-1024	RES 1K 5% 1/10W 0603 SMD.	R9,R10,R28,R37,R39,R78,	6
52	281-035-1034	RES 10K 5% 1/10W 0603 SMD.	R11,R3,R33,R40,R4,R54, R58,R59,R73,R8,	10
53	281-035-1054	RES 1M 5% 1/10W 0603 SMD.	R12,	1
54	281-035-1514	RES 150ohm +-5% 1/10W 0603 SMD	R31,R32,	2
55	281-035-1814	RES 180ohm +-5% 1/10W 0603 SMD	R63,	1
56	281-035-2034	RES 20K 5% 1/10W 0603 SMD.	R65,R76,R82,R87,R88, R90,R92,R93, R60,R61,R44,R45,R50, R51,R52,	8
57	281-035-2204	RES 22ohm 5% 1/10W 0603 SMD.	R20,R35,R38,	7
58	281-035-2224	RES 2.2K 5% 1/10W 0603 SMD.	R1,R2,R24,R30,R34, R36,R46,	3
59	281-035-3304	RES 33ohm 5% 1/10W 0603 SMD.	R6,R7,R26,	7
60	281-035-3314	RES 330 5% 1/10W 0603 SMD.	R91,R66,	3
61	281-035-3334	RES 33K 5% 1/10W 0603 SMD.	R83,R84,R22,R23,	2
62	281-035-4704	RES 47ohm 5% 1/10W 0603 SMD.	R17,R29,R41,R42,R94, R95,	4
63	281-035-4724	RES 4.7K 5% 1/10W 0603 SMD.	R77,R85,	6
64	281-035-4734	RES 47K 5% 1/10W 0603 SMD.	R79,R80,R81,	2
65	281-035-7504	SMD R 75 ohm 0603.		3

NO	Parts No.	Description	Part Location	Q' ty
66	281-045-0R04	RES 0 ohm +-5% 1/8W 0805 SMD	R47,L11,L13,L16,L21, L22,L29,L30,	8
67	282-103-2454	RES-NET 10Kohm 5% SMD 8P4R.	RP3,	1
68	282-330-2454	RES-NET 33ohm 5% SMD 8P4R.	RP1,RP4,RP5,RP6,RP7, RP8,RP9,RP10,RP11,RP12, RP13,RP14,RP15,RP16,	14
69	381-151-032554	SMD CC 150PF 25V NPO 0603 +-5%	CP1,	1
70	381-220-032554	SMD CC 22pF 25V NPO 0603.	C14,C15,C2,C4,C57,C58, C59,C66,C67,C78,C79,	11
71	381-330-032554	NPO 33PF/25V +-5% 0603 SMD	C94,C103,	2
72	381-331-032554	NPO 330PF/25V +-5% 0603 SMD	C63,C48,	2
73	382-103-032564	SMD CC 0.01uF/25V X7R 0603 +-	C26,C70,C71,C83,C84, C86,C87,C88,C89,	9
74	382-393-032564	SMD CC 0.039uF/25V X7R 0603.	CZ1,	1
75	382-472-032564	SMD CC X7R 25V 4700P 10% 0603.	C69,C73,C75,	3
76	382-682-035064	X7R 6800P/50V +-10% 0603SMD.	C102,C93, C1,C10,C100,C101,C104, C11,C110,C111,C12,C13, C16,C17,C18,C19,C20, C21,C22,C23,C24,C25, C27,C28,C3,C30,C31, C33,C41,C42,C43,C46, C47,C49,C5,C50,C51, C52,C53,C54,C55,C56, C6,C60,C61,C62,C64, C65,C68,C7,C72,C74,	2
77	385-104-032584	Y5V 0.1u/25V +80%-20% 0603	C29,C32,C37,	62
78	385-105-041684	Y5V 1uF/16V +80%-20% 0805.	C105,C106,	3
79	385-334-032584	Y5V 0.33u/25V +80%-20% 0603	U2,	2
80	481-LCC-0440	SOCKET 44PIN PLCC.	U8,	1
81	506-OAI-1084ADJ	SMD REG AIC1084CM-ADJ 5A	U13,	1
82	506-OAI-CY33	AIC1117CY-33 3.3V 900mA SMD.	U15,	1
83	506-OAP-4835	APA4835RI/ANPEC AUDIO AMP.	U3,U4,	1
84	506-OCS-5828	LVD (8bit 56pin)TSSOP.	U11,	2
85	506-2AI-C1578	IC DC TO DC IC.AIC1578(SMD).	U14,	1
86	506-524-LC21	MEMORY IC 24LC21 SMD.	U1,	1
87	506-5NM-24C16	24C16 SO8 MEMORY IC SMD.	U12,	1
88	506-774-LCX14	74LCX SOIC14 HI SPEED TTL SMD.	U7,	1
89	506-800-358D	LM358D SO8 OP AMP IC.	U9,	1
90	506-SMA-SCOTVP2	MRT SCALER IC MASCOTVP2.	U16,	1
91	506-XXP-2008A	IC FOR EMI 展頻 P2008A	Q2,Q1,	1
92	518-02N-3904	NPN 2N3904S(SMD).		2

NO	Parts No.	Description	Part Location	Q' ty
93	518-02N-3906	SMD TR 2N3906	Q3,	1
94	518-1CE-9435	MOSFET CE9435A S08.	U5,U10,	2
95	528-2BA-T54C	SMD DIODE BAT54C SOT23.	D8,	1
96	558-352-5000	SMD FUSE 1206 24V 5A.	F1,	1
97	630-030-8001	125HR(DF14)30P1.25 SMD.	CN1,	1
98	780-103-3000	SMDBEAD SBK160808300Y0603 30Ω	L2,L3,L4,L5,L6,L7,L17, L18,L23,L24,L25,L31,L32	13
99	780-103-3000B	FBM-10-160808-300T/KTNG CORE	L26,L27,L28,	3
100	780-104-6010	FB 0805/600ohm 100mHZ.	L10,L12,L15,L19,L20,L1,	6
101	780-107-121K50	BEAD 120ohm 1206 5A FBM-11	L14,L9,L8,	3
102	780-112-8000	SMD BEAD 6A 80ohm 1812	TL2,	1
103	899-400-PS576	PS576 CONTRONL/B		1
104	200-701-PS576	PS576 CONTROL KEY PCB		1
105	401-170-0220	TACT SWITCH H5mm	S1,S2,S3,S4,S5,	5
106	520-005-0302-F	LED LT0302-23	D1,	1
107	630-008-C001	JST 1.5mm HEADER ZR S8B-ZR.	J1,	1
108	902-PS8-6026C-E	PS776 TCO99 WORTMANN		1
109	101-005-2032	SCREW M2*5 ISO .	SPK,	4
110	121-000-776L	REAR PLATE SECC 1.0T.		1
111	123-001-776DT	CONNECTOR COVER		1
112	123-100-P7E54	PS776 FRONT PANEL AL5052P 0.8T		1
113	123-B00-PS776	FRONT PANEL		1
114	123-701-PS776	PS776 BASE NECK AL/ZN.178*78		1
115	126-000-AS776	AS776 HINGE STEELNESS.		1
116	151-001-P7E6A-A	PS776 REAR CABINET K2440+SP		1
117	154-001-PS776-A	PS776 KEY FRAME		1
118	600-151-0400	Germany Power Cord 150cm Black		1
119	610-151-15RM-1	SH570/770 Signal Cable 1.5M		1
120	820-001-7ESTS4	PS776 STAND Ass' y+877C		1
121	123-700-6A780	780.781.782 BASE		1
122	132-300-PS576	SPRING ASS'Y		1
123	106-012-6033-A	CHESS M6xL12.5ISO		1
124	132-001-PS576-B	PS576 SCREW PING(D1.2		1
125	155-001-PS576	RUBBER FOOT(NR).		5
126	824-2R5-J776VL	8ohm 2.5W 40cm		1

NO	Parts No.	Description	Part Location	Q' ty
127	824-2R5-J776VR	8ohm 2.5W 40cm		1
128	827-001-PS776	PS776 LCD AU*5		1
129	003-H01-LCD	LCD CPU LBL 15mmx15mm.		1
130	101-010-3012	SCREW P3.0*10 TP1.		10
131	102-010-4033-A	HG562 P/SW 4*10 ISO	HIGH NECK,	2
132	103-006-4033	SCREW F4*6mm ISO ZI3C-NI.		1
133	104-010-3012-8	SCREW R/W3*10mm TP1 § 8 .		2
134	105-006-4033-1	SCREW T4*6mm ISO	HING,	2
135	107-005-3032	SCREW B3*5 ISO	PCB,	6
136	107-006-3032	LT380M B M3xL6 ISO.	PANEL,	8
137	107-008-3033	B M3*8 ISO .78723082		4
138	107-010-3073	B 3*10 TP4.	KEY TOP,	2
139	126-030-ALP9	AL Foil L300*W30mm	INVER/PVC,	0.5
140	154-002-776L	PS776L Insulation		1
141	154-002-AS776	AS776 MYLAR SHEET FOR PANEL		1
142	154-002-PS576	PS576 LENS PMMA		1
143	154-500-AS776	AS776 PET FOR PANEL		1
144	506-1SM-89516	SYNCMOS SM89516C25J 44Pin PLCC		1
145	631-003-A014-2C	AUDIO Cable 3.5STEREO -- 2*RCA		1
146	631-006-7020-T	SH570/770 1061#28 6P2.0mm		1
147	631-008-6020-W	8PIN 1.5PITCH<->8PIN 1.5PITCH		1
148	631-030-J007-D	TWIST WIRE 30P 1.0->1.5pitch		1
149	640-004-0007	熱收縮管黑色 Φ4*7mm		1
150	82E-0ME-PS776	PS776 AU*5 EMI ASS'Y		1
151	126-030-ALP1	AL Foil 80X30mm.		4
152	126-030-ALP2	AL Foil 180X30mm.		3
153	126-030-ALP3	AL Foil 120X30mm.		1
154	760-300-0002	RING CORE 12.1*15.5*7.3.		2

PARTS LIST M074

SYM	PART NUMBER	DESCRIPTION	QUANT	ITEM NO.	MFRS.	INS.
C1	25MV100SGX+TS	CAPACTOR	1.	C01-004S	SANYO	
C2	N.A					
C3	C1608X7R1E104KT GRM39X7R104K25	OR CAPACTOR	1.	C03-065T C03-065U	TDK MURATA	
C4	C1608X7R1E104KT GRM39X7R104K25	OR CAPACTOR	1.	C03-065T C03-065U	TDK MURATA	
C5	N.A					
C6	C1608X7R1E104KT GRM39X7R104K25	OR CAPACTOR	1.	C03-065T C03-065U	TDK MURATA	
C7	N.A					
C8	C1608X7R1H681KT GRM39X7R681K50	OR CAPACTOR	1.	C03-082T C03-082U	TDK MURATA	
C9	N.A					
C10	C2012Y5V1C225ZT	CAPACTOR	1.	C03-446T	TDK	
C11	RSBEC3180DQJ	CAPACTOR	1.	C02-016R	ARCO	
C12	CC45SL3FD270JY	CAPACTOR	1.	C04-925T	TDK	
C13	CC45SL3FD270JY	CAPACTOR	1.	C04-925T	TDK	
C14	N.A					
C15	C1608X7R1E104KT GRM39X7R104K25	OR CAPACTOR	1.	C03-065T C03-065U	TDK MURATA	
C17	RSBEC3180DQJ	CAPACTOR	1.	C02-016R	ARCO	
C18	CC45SL3FD270JY	CAPACTOR	1.	C04-925T	TDK	
C19	CC45SL3FD270JY	CAPACTOR	1.	C04-925T	TDK	
C20	N.A					
C21	C1608X7R1E104KT GRM39X7R104K25	OR CAPACTOR	1.	C03-065T C03-065U	TDK MURATA	
C22	C1608Y5V1A105ZT GRM39Y5V105Z10	OR CAPACTOR	1.	C03-487T C03-476U	TDK MURATA	
C23	N.A					
C24	C1608Y5V1A105ZT GRM39Y5V105Z10	OR CAPACTOR	1.	C03-487T C03-476U	TDK MURATA	
C27	N.A					
C28	N.A					
C29	C2012Y5V1C225ZT	CAPACTOR	1.	C03-446T	TDK	
C30	C1608Y5V1A105ZT GRM39Y5V105Z10	OR CAPACTOR	1.	C03-487T C03-476U	TDK MURATA	
				MODEL	M074	DATE
				DRAWN	Linda	6/18/02
				DESIGNED	KEN	6/18/02
				LEADER	<i>[Signature]</i>	6/18/02
REV.	DATE	DESCRIPTION	DESIGNED	APV.	MANAGER	<i>[Signature]</i> 6/18/02
MULTIPAL TECHNOLOGY CORP.					EPLAM0740	PAGE 1/5

PARTS LIST M074

SYM	PART NUMBER	OR	DESCRIPTION	QUANT	ITEM NO.	MFRS.	INS.
C31	C1608Y5V1A105ZT	OR	CAPACTOR	1.	C03-487T	TDK	
	GRM39Y5V105Z10				C03-476U	MURATA	
R2	RC0805FR-220R	OR	RESISTOR	1.	R02-034Y	YAGEO	
	RMC10P2200F				R02-034K	KAMAYA	
R3	RC0603FR-10K	OR	RESISTOR	1.	R01-077Y	YAGEO	
	RMC16P1002F				R01-077K	KAMAYA	
R4	N.A						
R6	RC0603FR-100K	OR	RESISTOR	1.	R01-102Y	YAGEO	
	RMC16P1003F				R01-102K	KAMAYA	
R7	RC0603FR-100K	OR	RESISTOR	1.	R01-102Y	YAGEO	
	RMC16P1003F				R01-102K	KAMAYA	
R8	RC0603FR-750K	OR	RESISTOR	1.	R01-124Y	YAGEO	
	RMC16P7503F				R01-124K	KAMAYA	
R9	RC0603FR-10K	OR	RESISTOR	1.	R01-077Y	YAGEO	
	RMC16P1002F				R01-077K	KAMAYA	
R10	RC0603FR-10K	OR	RESISTOR	1.	R01-077Y	YAGEO	
	RMC16P1002F				R01-077K	KAMAYA	
R11	RC0603FR-10K	OR	RESISTOR	1.	R01-077Y	YAGEO	
	RMC16P1002F				R01-077K	KAMAYA	
R12	N.A						
R13	RC0805FR-3K	OR	RESISTOR	1.	R02-062Y	YAGEO	
	RMC10P3001F				R02-062K	KAMAYA	
R14	N.A						
R15	N.A						
R16	RC0603FR-33K	OR	RESISTOR	1.	R01-088Y	YAGEO	
	RMC16P3302F				R01-088K	KAMAYA	
R17	N.A		RESISTOR				
R18	RC1206FR-1K	OR	RESISTOR	1.	R03-052Y	YAGEO	
	RMC14P1001F				R03-052K	KAMAYA	
R19	RC0603FR-1K	OR	RESISTOR	1.	R01-052Y	YAGEO	
	RMC16P1001F				R01-052K	KAMAYA	
R20	RC0805FR-43K	OR	RESISTOR	1.	R02-091Y	YAGEO	
	RMC10P4302F				R02-091K	KAMAYA	
R21	RC0603FR-100K	OR	RESISTOR	1.	R01-102Y	YAGEO	
	RMC16P1003F				R01-102K	KAMAYA	
R22	RC0603FR-51K	OR	RESISTOR	1.	R01-093Y	YAGEO	
					MODEL	M074	DATE
					DRAWN	Linda	6/18/02
					DESIGNED	KEN	6/18/02
					LEADER	Ken	6/18/02
					MANAGER	D. H. ...	6/18/02
REV.	DATE		DESCRIPTION	DESIGNED	APV.		
MULTIPAL TECHNOLOGY CORP.						EPLAM0740	PAGE 2/5

PARTS LIST M074

SYM	PART NUMBER		DESCRIPTION	QUANT	ITEM NO.	MFRS.	INS.
R22	RMC16P5102F		RESISTOR	1.	R01-093K	KAMAYA	
R23	RC0603FR-62K	OR	RESISTOR	1.	R01-097Y	YAGEO	
	RMC16P6202F				R01-097K	KAMAYA	
R24	RC0805FR-3K	OR	RESISTOR	1.	R02-062Y	YAGEO	
	RMC10P3001F				R02-062K	KAMAYA	
R25	N.A						
R26	N.A						
R27	RC0603FR-33K	OR	RESISTOR	1.	R01-088Y	YAGEO	
	RMC16P3302F				R01-088K	KAMAYA	
R28	RC1206FR-1K	OR	RESISTOR	1.	R03-052Y	YAGEO	
	RMC14P1001F				R03-052K	KAMAYA	
R29	N.A						
R30	RC0603FR-1K	OR	RESISTOR	1.	R01-052Y	YAGEO	
	RMC16P1001F				R01-052K	KAMAYA	
R31	RC0805FR-43K	OR	RESISTOR	1.	R02-091Y	YAGEO	
	RMC10P4302F				R02-091K	KAMAYA	
R32	RC0603FR-100K	OR	RESISTOR	1.	R01-102Y	YAGEO	
	RMC16P1003F				R01-102K	KAMAYA	
R33	RC0603FR-51K	OR	RESISTOR	1.	R01-093Y	YAGEO	
	RMC16P5102F				R01-093K	KAMAYA	
R34	RC0603FR-62K	OR	RESISTOR	1.	R01-097Y	YAGEO	
	RMC16P6202F				R01-097K	KAMAYA	
R35	RC0603FR-62K	OR	RESISTOR	1.	R01-097Y	YAGEO	
	RMC16P6202F				R01-097K	KAMAYA	
R36	RC0603FR-10K	OR	RESISTOR	1.	R01-077Y	YAGEO	
	RMC16P1002F				R01-077K	KAMAYA	
R37	RC0603FR-10K	OR	RESISTOR	1.	R01-077Y	YAGEO	
	RMC16P1002F				R01-077K	KAMAYA	
R38	RC0603FR-100R	OR	RESISTOR	1.	R01-027Y	YAGEO	
	RMC16P1000F				R01-027K	KAMAYA	
R39	RC0603FR-100R	OR	RESISTOR	1.	R01-027Y	YAGEO	
	RMC16P1000F				R01-027K	KAMAYA	
R40	N.A						
R41	RC1206FR-1K	OR	RESISTOR	1.	R03-052Y	YAGEO	
	RMC14P1001F				R03-052K	KAMAYA	
R42	N.A						

					MODEL	M074	DATE
					DRAWN	Linda	6/18/02
					DESIGNED	KEN	6/18/02
					LEADER	[Signature]	6/18/02
REV.	DATE	DESCRIPTION	DESIGNED	APV.	MANAGER	A. H. W.	6/18/02

MULTIPAL TECHNOLOGY CORP.

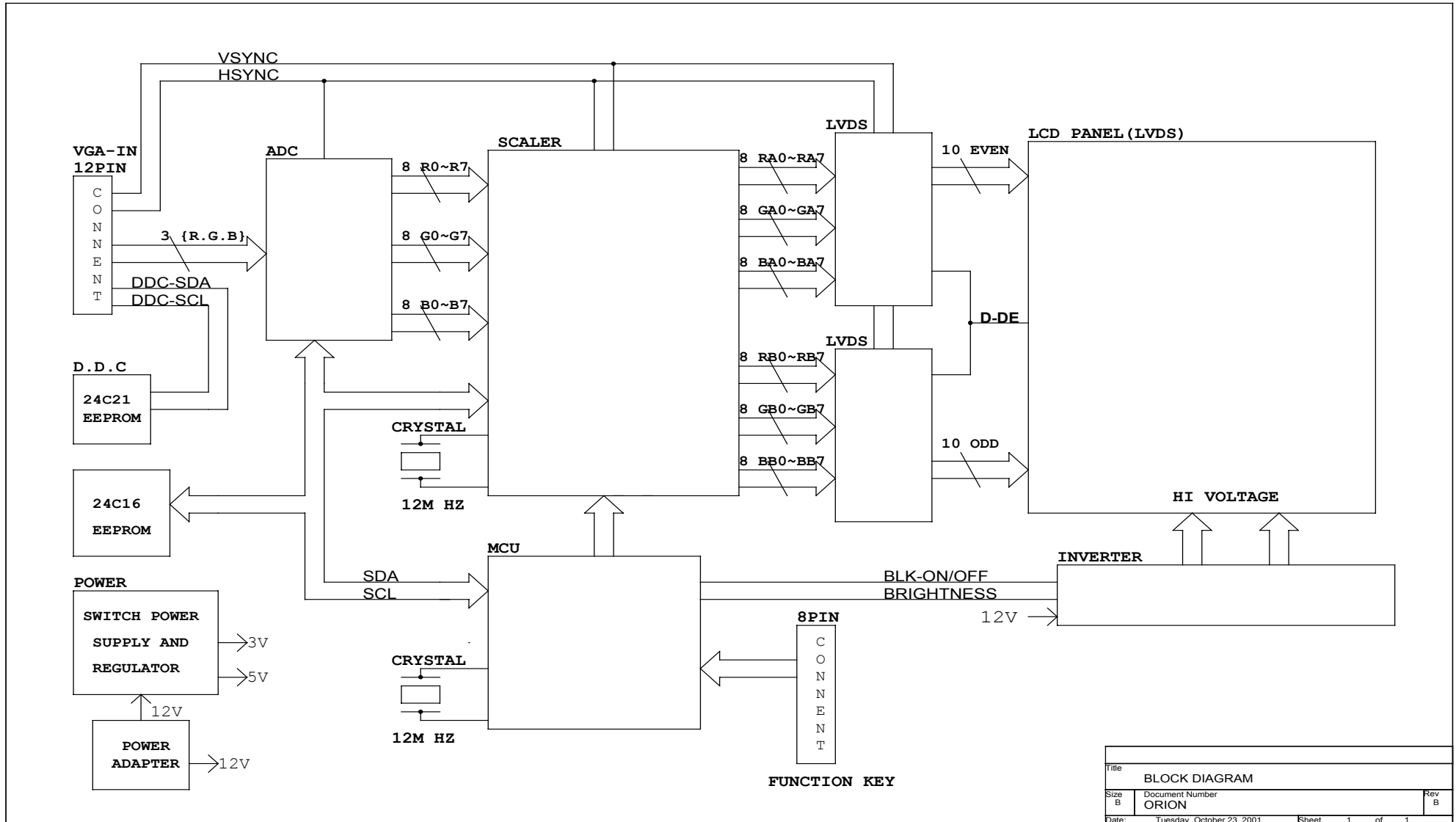
EPLAM0740

PAGE
3/5

PARTS LIST M074

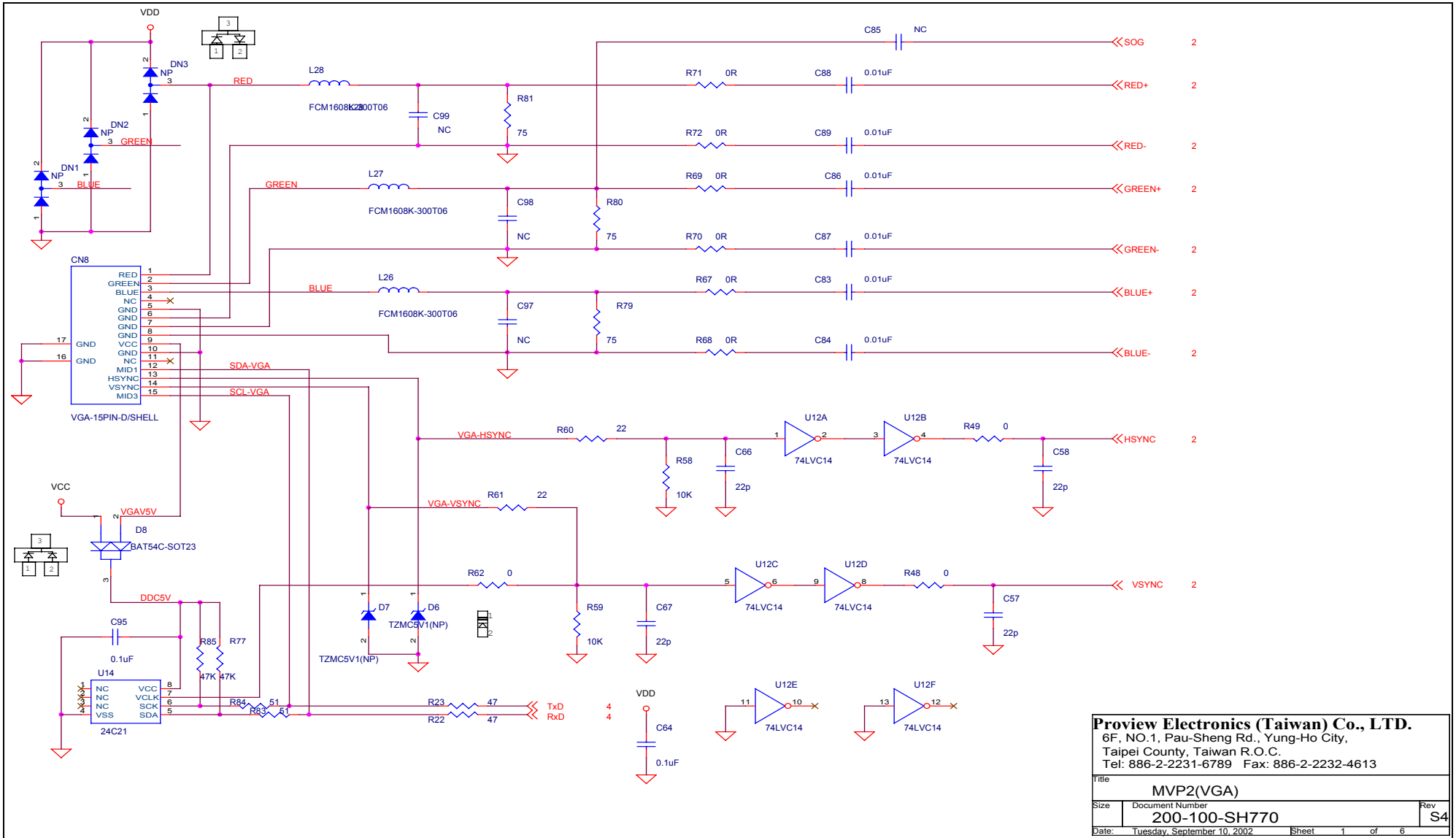
SYM	PART NUMBER	OR	DESCRIPTION	QUANT	ITEM NO.	MFRS.	INS.
R43	RC1206FR-1K	OR	RESISTOR	1.	R03-052Y	YAGEO	
	RMC14P1001F				R03-052K	KAMAYA	
R44	N.A						
R45	N.A						
J1	JS-1125R-06	OR	CONNECTOR	1.	J01-002Y	CHYAO SHIUNN	
	JH2-20-0648				J01-002B	FCN	
G1	C002		CABLE	1.	G02-003J	JST	
G2	C002		CABLE	1.	G02-003J	JST	
F1	3216FF 3A	OR	FUSE	1.	F01-003B	BUSINNES	
	429 003				F01-003L	LITTELFUSE	
B1	M074	OR	PCB	1.	B02-074P/3	POL	
	M074				B02-074H/3	CHIUN YANG	
T1	T08118	OR	TRANSFORMER	1.	T02-033T	TMP	
	TME011925065				T02-033R	TRANSMORE	
T2	T08118	OR	TRANSFORMER	1.	T02-033T	TMP	
	TME011925065				T02-033R	TRANSMORE	
L1	D108C-101K	OR	INDUCTOR	1.	L01-023L	LONGVIEW	
	RCP1008-101K				L01-023S	STAR	
L2	D108C-101K	OR	INDUCTOR	1.	L01-023L	LONGVIEW	
	RCP1008-101K				L01-023S	STAR	
U1	BA9741FP-E2		IC	1.	U02-005R	ROHM	
D1	EC21QS04-TE12R	OR	DIODE	1.	D02-002I	INTECH	
	SMA240LV				D02-002F	FCI	
D3	UDZS TE-1713B	OR	DIODE	1.	D03-018R	ROHM	
	KDZ13V				D03-018K	KEC	
D5	MA157A	OR	DIODE	1.	D01-002P	PANASONIC	
	DAN217 T146	OR			D01-002R	ROHM	
	1SS226-TE85L				D01-002T	TOSHIBA	
D6	EC21QS04-TE12R	OR	DIODE	1.	D02-002I	INTECH	
	SMA240LV				D02-002F	FCI	
D8	UDZS TE-1713B	OR	DIODE	1.	D03-018R	ROHM	
	KDZ13V				D03-018K	KEC	
D10	MA157A	OR	DIODE	1.	D01-002P	PANASONIC	
	DAN217 T146	OR			D01-002R	ROHM	
	1SS226-TE85L				D01-002T	TOSHIBA	
Q1	DTC114EUA T106	OR	TRANSISTOR	1.	Q02-002R	ROHM	
					MODEL	M074	DATE
					DRAWN	Linda	6/18/02
					DESIGNED	KEN	6/18/02
					LEADER	Ken	6/18/02
REV.	DATE	DESCRIPTION	DESIGNED	APV.	MANAGER	S. A. Lim	6/18/02
MULTIPAL TECHNOLOGY CORP.					EPLAM0740		PAGE 4/5

I. BLOCK DIAGRAM



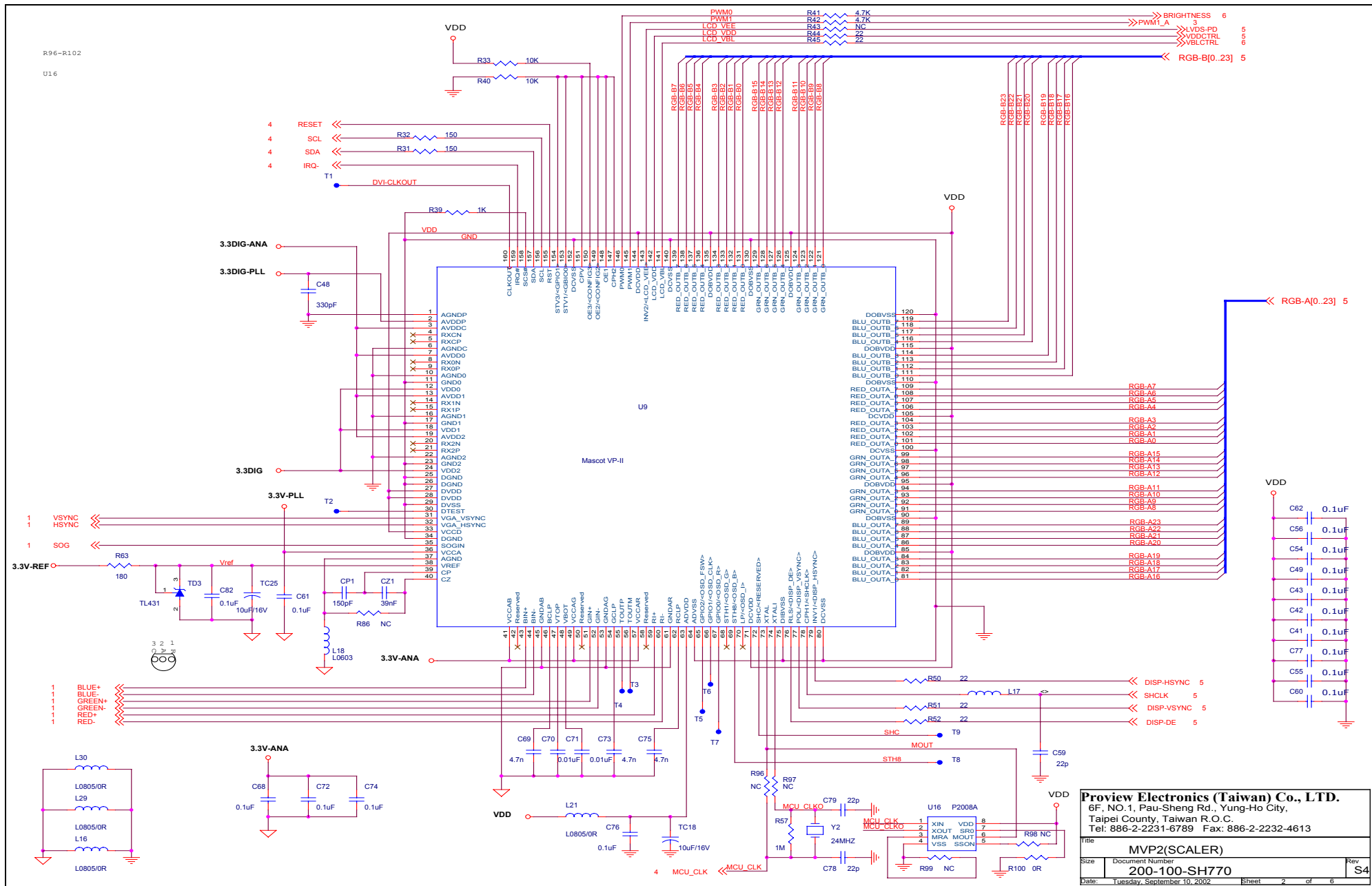
Title		
BLOCK DIAGRAM		
Size	Document Number	Rev
B	ORION	B
Date:	Tuesday, October 23, 2001	Sheet 1 of 1

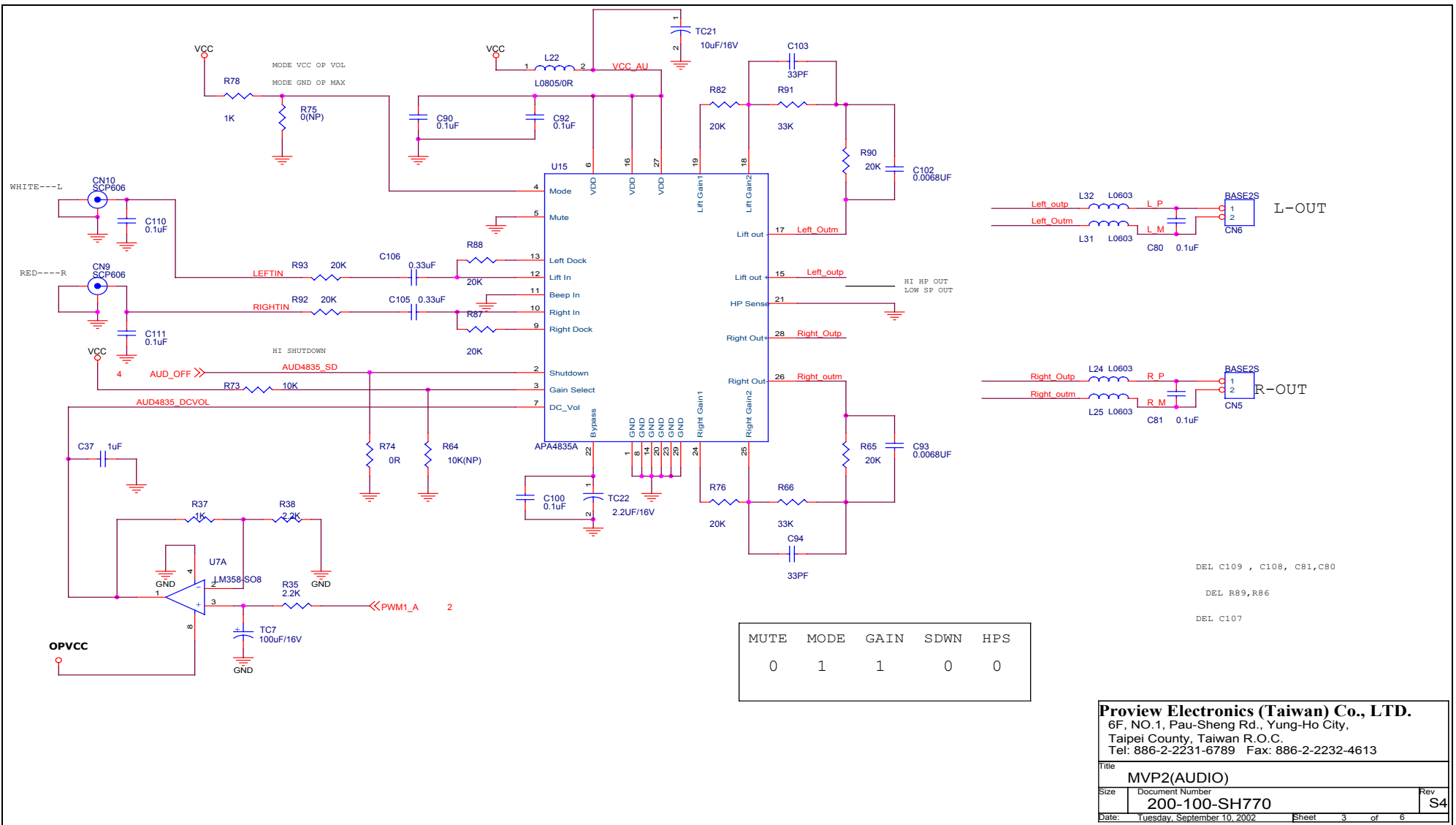
J. SCHEMATIC DIAGRAM

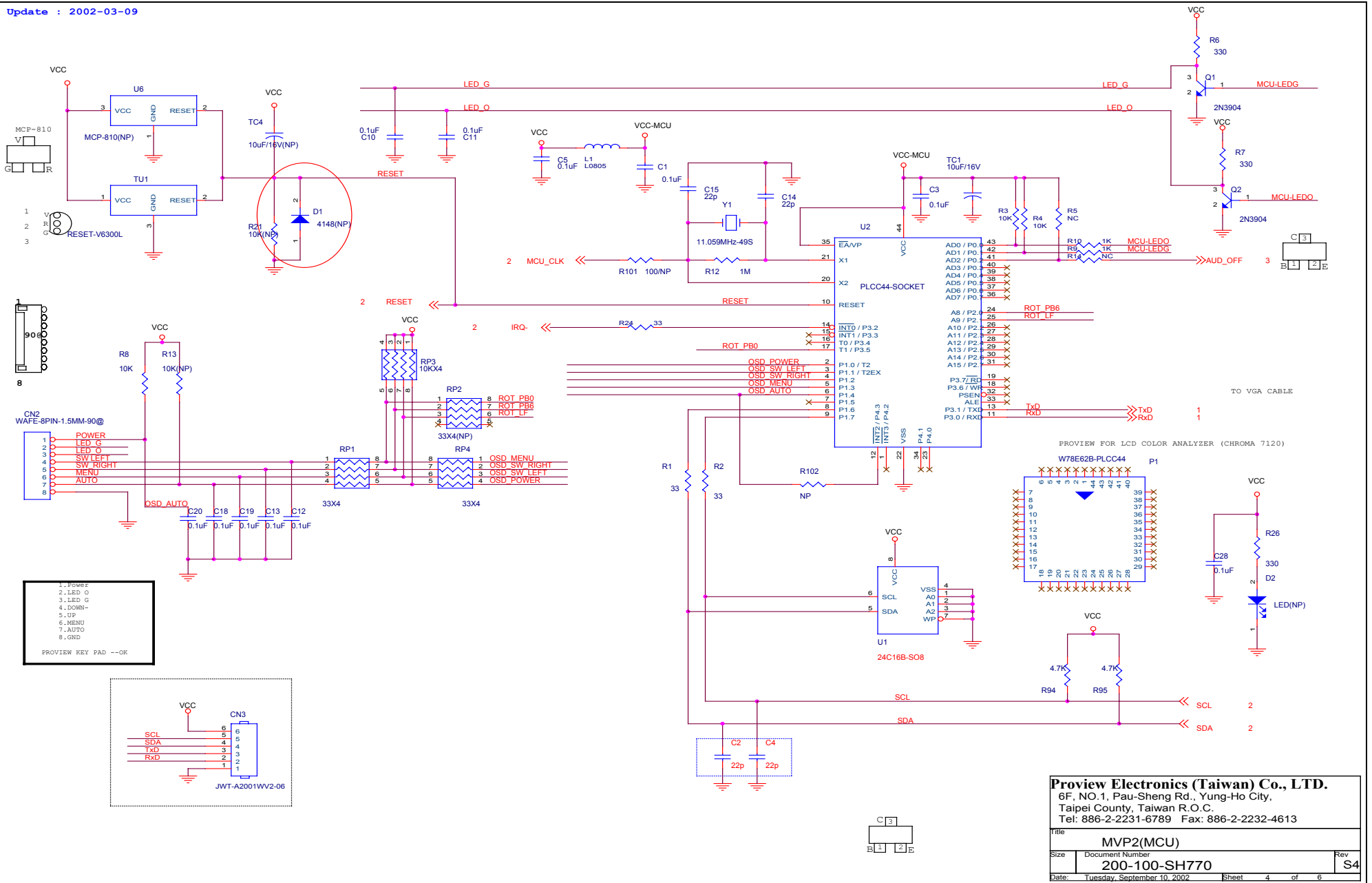


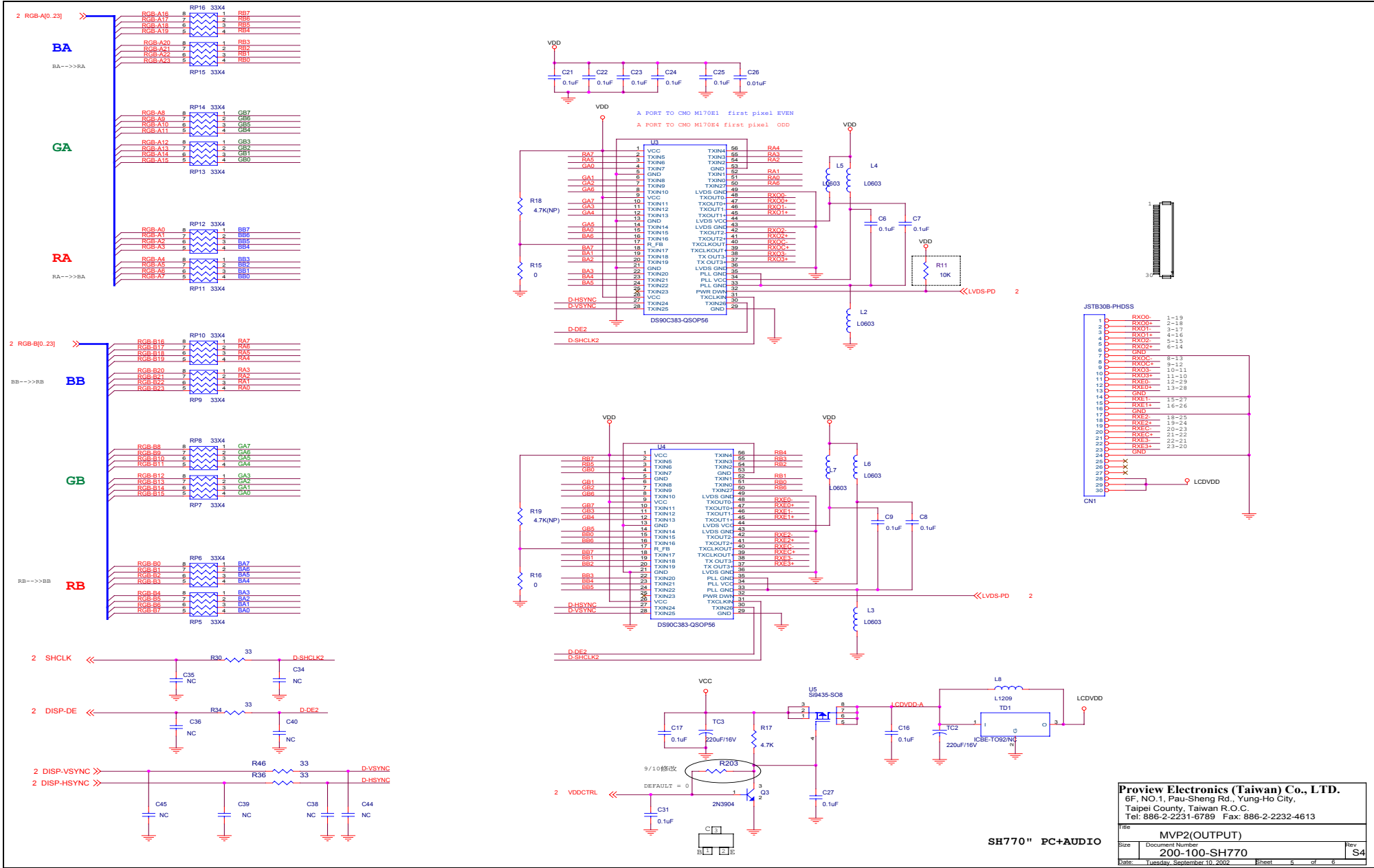
Proview Electronics (Taiwan) Co., LTD.
 6F, NO.1, Pau-Sheng Rd., Yung-Ho City,
 Taipei County, Taiwan R.O.C.
 Tel: 886-2-2231-6789 Fax: 886-2-2232-4613

Title		MVP2(VGA)	
Size	Document Number	Rev	
	200-100-SH770	S4	
Date:	Tuesday, September 10, 2002	Sheet	1 of 6





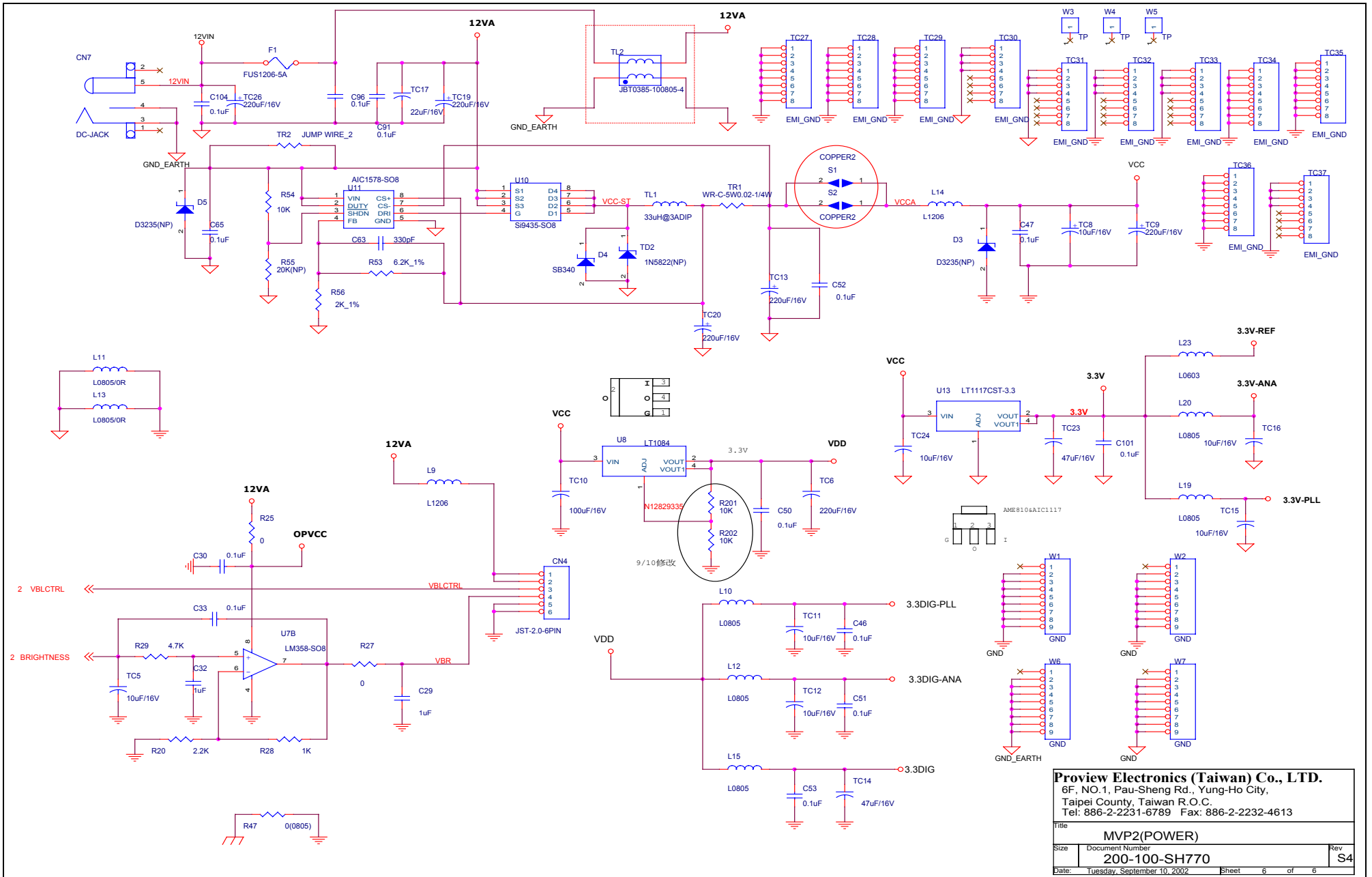




Proview Electronics (Taiwan) Co., LTD.
 6F, NO.1, Pau-Sheng Rd., Yung-Ho City,
 Taipei County, Taiwan R.O.C.
 Tel: 886-2-2231-6789 Fax: 886-2-2232-4613

File	MVP2(OUTPUT)		Rev
Size	Document Number	200-100-SH770	S4
Date	Tuesday, September 10, 2002		Sheet 5 of 6

SH770" PC+AUDIO

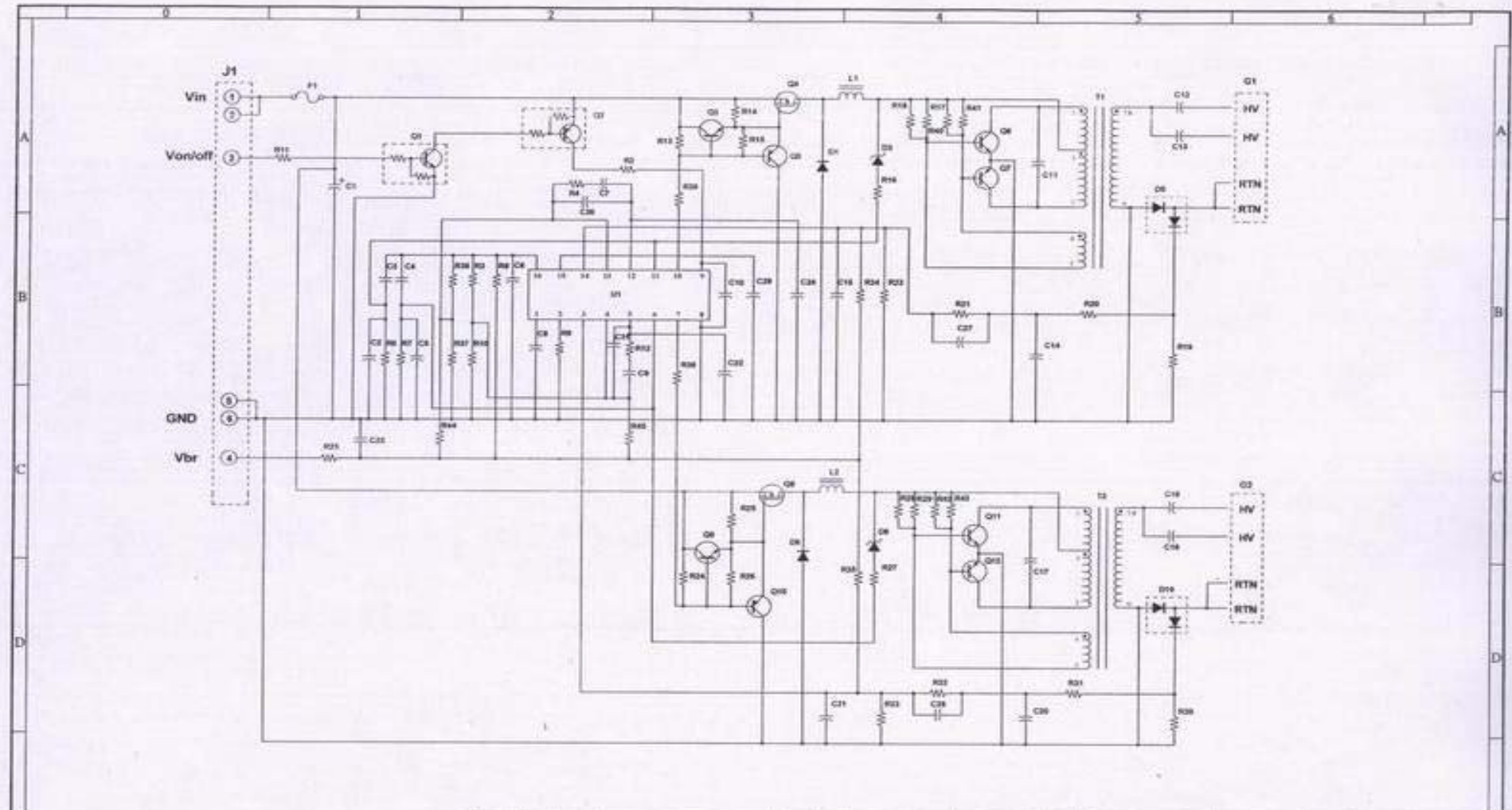


Preview Electronics (Taiwan) Co., LTD.
 6F, NO.1, Pau-Sheng Rd., Yung-Ho City,
 Taipei County, Taiwan R.O.C.
 Tel: 886-2-2231-6789 Fax: 886-2-2232-4613

Title: **MVP2(POWER)**

Size	Document Number	Rev
	200-100-SH770	S4

Date: Tuesday, September 10, 2002 Sheet 6 of 6



No.	圖號 - DWG.No.	名稱 - NAME	數量 - QUANTITY	材質 - MATERIAL	處理 - TREATMENT	備註 - REMARK
設計 - DESIGN		KEV	日期 DATE	6/18/01	名稱 TITLE	電路圖
製圖 - DRAWING		LINDA	日期 DATE	6/18/01	圖式 MODELS	M074
檢核 - CHECKED			日期 DATE	6/18/01	比例 SCALE	1:1
承認 - APPVD			日期 DATE	6/18/01	單位 UNIT	mm
承認 - APPVD			日期 DATE	6/18/01	圖號 - DWG.No.	EELAM0740
					日期 - DATE	7/18/01
					頁 - PAGE	1/1

圖號 - DWG.No.	名稱 - NAME	內容 - DESCRIPTION

敬禧科技股份有限公司 MULTIPAL TECHNOLOGY CORP

Memu