

**770**

***Service Manual***

# TABLE OF CONTENTS

<b>S</b>	<b>E</b>	<b>R</b>	<b>V</b>	<b>I</b>	<b>C</b>	<b>E</b>	
<b>WARNING.</b>							<b>1</b>
<b>A. IMPORTANT SAFETY INSTRUCTION.</b>							<b>1</b>
<b>B. SPECIFICATIONS.</b>							<b>2</b>
<b>C. TIMING CHART.</b>							<b>3</b>
<b>D. CONTROL LOCATION.</b>							<b>5</b>
<b>E. C</b>	<b>O</b>	<b>N</b>	<b>D</b>	<b>U</b>	<b>C</b>	<b>T</b>	<b>I</b>
<b>VIEW.</b>							<b>7</b>
<b>F. ADJUSTMENT PROCEDURE.</b>							<b>2</b>
<b>1</b>							
<b>G. TROUBLE SHOOTING HINTS.</b>							<b>13</b>
<b>H. REPLACEMENT PARTS LIST.</b>							<b>17</b>
<b>I. BLOCK DIAGRAM.</b>							<b>7</b>
<b>2</b>							
<b>J. SCHEMATIC DIAGRAM.</b>							<b>28</b>

# WARNING

To prevent from fire or shock hazard,do not expose monitor to any rain or any form of water.High voltage is inside the monitor so please do not remove the back cover of the cabinet if you are not a qualified monitor engineer.Contact the local dealer or the nearest **Proview** branch office if you need help.

## A. IMPORTANT SAFETY INSTRUCTION

Prior to using this service manual,please ensure that you have carefully followed all the procedures outlined in the user's manual for this product.

1. Read all of these instructions.
2. Save these instructions.
3. Follow all warnings and instructions a marked on the product.
4. Unplug this product from the wall outlet before cleaning.Do not use liquid cleaners or aerosol cleaners, use a damp cloth for cleaning.
5. Do not use this product near water.
6. Do not place this product on an unstable cart,stand or table.The product may fall,causing serious damage to the product.
7. Slots and openings in the cabinet and the back or bottom are provided for ventilation,to ensure reliable operation of the product and to protect it from overheating,those openings must not be blocked or covered.The openings should never be blocked by placing the product on a bed,sofa, rug, or other similar surface.This product should not be placed in a built-in installation less proper ventilation is provided.
8. This products should be operated from the type of power source indicated on the marketin label. If you are not sure of the type of power available, consult your dealer or local power company
9. This product is equipped with a 3-wire grounding type plug,a plug having a third (grounding) pin.This plug will only fit into a grounding-type power outlet.This is a safety feature,if you are unable to insert the plug into the outlet,contact your electrician to replace your obsolete outlet.Do not defeat the purpose of the grounding-type plug.
10. Do not allow anything to rest on the power cord.Do not locate this product where persons will walk on the cord.
11. If an extension cord is used with this product,make sure that the total of the ampere ratings on the product plugged into the extension cord to the waplugged into outlet does not exceed 15 ampere.
12. Never push objects of any kind into this product through cabinet slots as they may touch dangerous voltage points or short out parts that could result in a risk of fire or electric shock.Never spill liquid of any kind on the product.
13. Do not attempt to service this product yourself,as opening or removing covers may expose you to dangerous voltage points or other risks.Refer all servicing to service personnel.
14. Unplug this product from the wall outlet and refer servicing to qualified service personnel under the following conditions.
  - a. When the power cord or plug is damaged or frayed.
  - b. If liquid has been spilled into the product.
  - c. If the product has been exposed to rain or water.
  - d. If the product does not operate normally,when the operating instructions are followed.Adjust only those controls that are covered by the operating instructions since improper adjustment of

other controls may result in damage and will often require extension work by a qualified technician to restore the product to normal operation.

- e. If the product has been dropped or the cabinet has been damaged.
- f. If the product exhibits a distinct change in performance, indicating a need for service.

## B. SPECIFICATIONS

1. Maximum Resolution	1280 x 1024 @ 75Hz
2. Recommend Resolution	1280 x 1024 @ 60Hz
3. Synchronization Range	
Horizontal	30 – 81 KHz
Vertical	56– 75 Hz
4. Active Display Area	337mm (H) x 270mm (V)
5. Dot Pitch	0.264(H) x 0.264(V) mm
6. Support display colors	16.7M color
7. Contrast Ratio (Typical)	400
8. Luminance of White	250cd/m <sup>2</sup>
9. Bandwidth	135MHz
10. User Control	4 Key Switch
11. OSD Function	Brightness, Contrast, H-Pos, V-Pos, H. Size, Phase, Color Select, Auto, Reset, Language, OSD Adjust, Exit
12. View Angle	
Horizontal	60 , 60 Degrees
Vertical	40 , 60 Degrees
13. Power Source	100 – 240 Vac 60 / 50 Hz
14. Power Consumption	48W (max.)
15. Connection Type	15 Pin D Type
16. Input Signal	
Video	Analog R.G.B. , 0.7Vp-p / 75 Ohms
Sync.	TTL level, positive or negative polarity
17. Color Temperature	Cool / Warm
18. Dimension (WxHxD)	480mm x 435mm x 180mm
19. Monitor Weight	4.2Kg
20. Base Operation	
Tilt	0 / + 15 degree
21. Power Saving	
ON	< 48W
STAND BY	< 5W
OFF	< 5W
22. Signal Connector Pin Assignment	
Pin No.	
1. Red	9. 5V <sub>DC</sub>
2. Green	10. Sync. Ground
3. Blue	11. Ground
4. Ground	12. SDA (For DDC)
5. Self Test	13. Horizontal Sync.
6. Red Ground	14. Vertical Sync.
7. Green Ground	15. SCL (For DDC)
8. Blue Ground	
23. Audio signal	3.5Φ stereo phone jack Input Sensitivity : 200mV 2+2W 8Ω Speaker





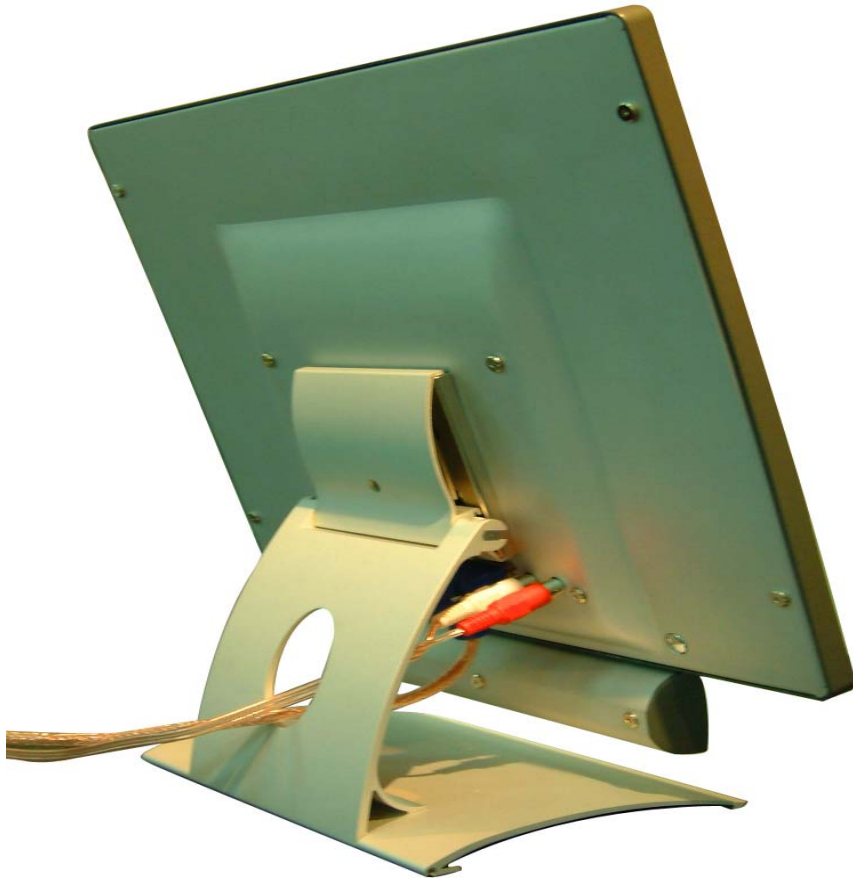
## **D. CONTROL LOCATION**

### **Font control panel**



1. Menu Button
2. Select Button
3. Auto Button
4. Power Button
5. LED (Power Display)

### **Rear panel**



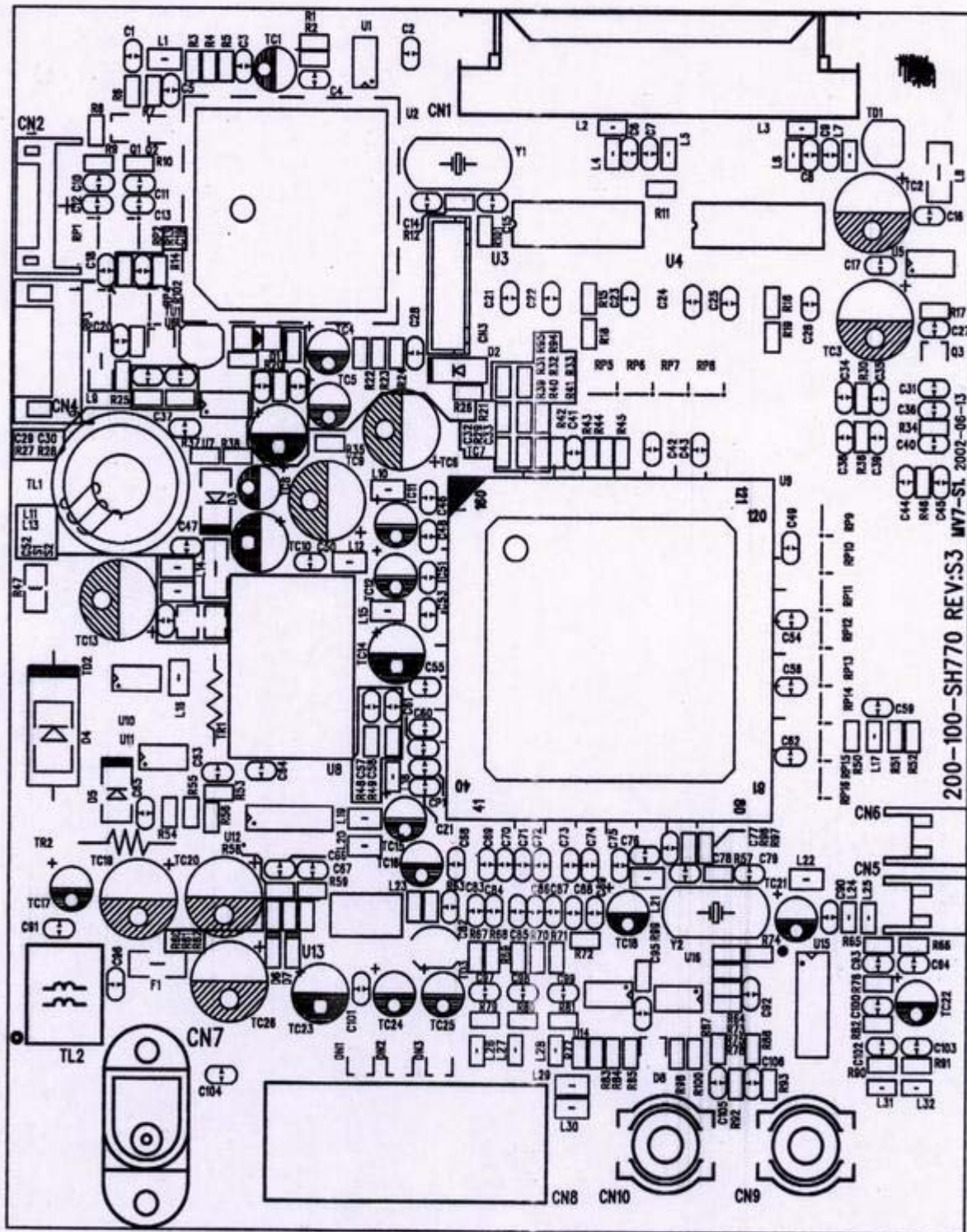
1. VGA Signal Cable
2. Power jack
3. Line in jack



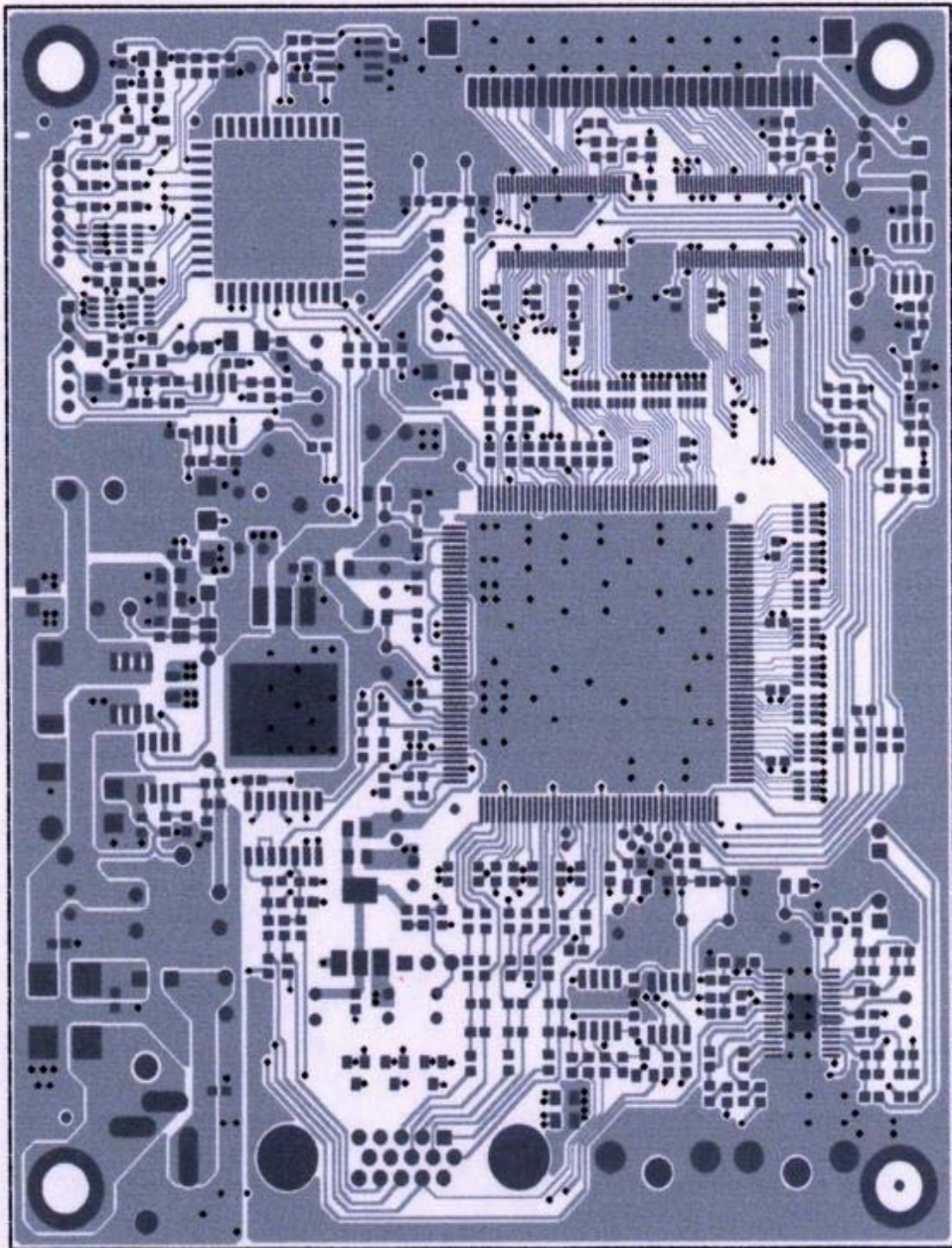


# E. CONDUCTION VIEW

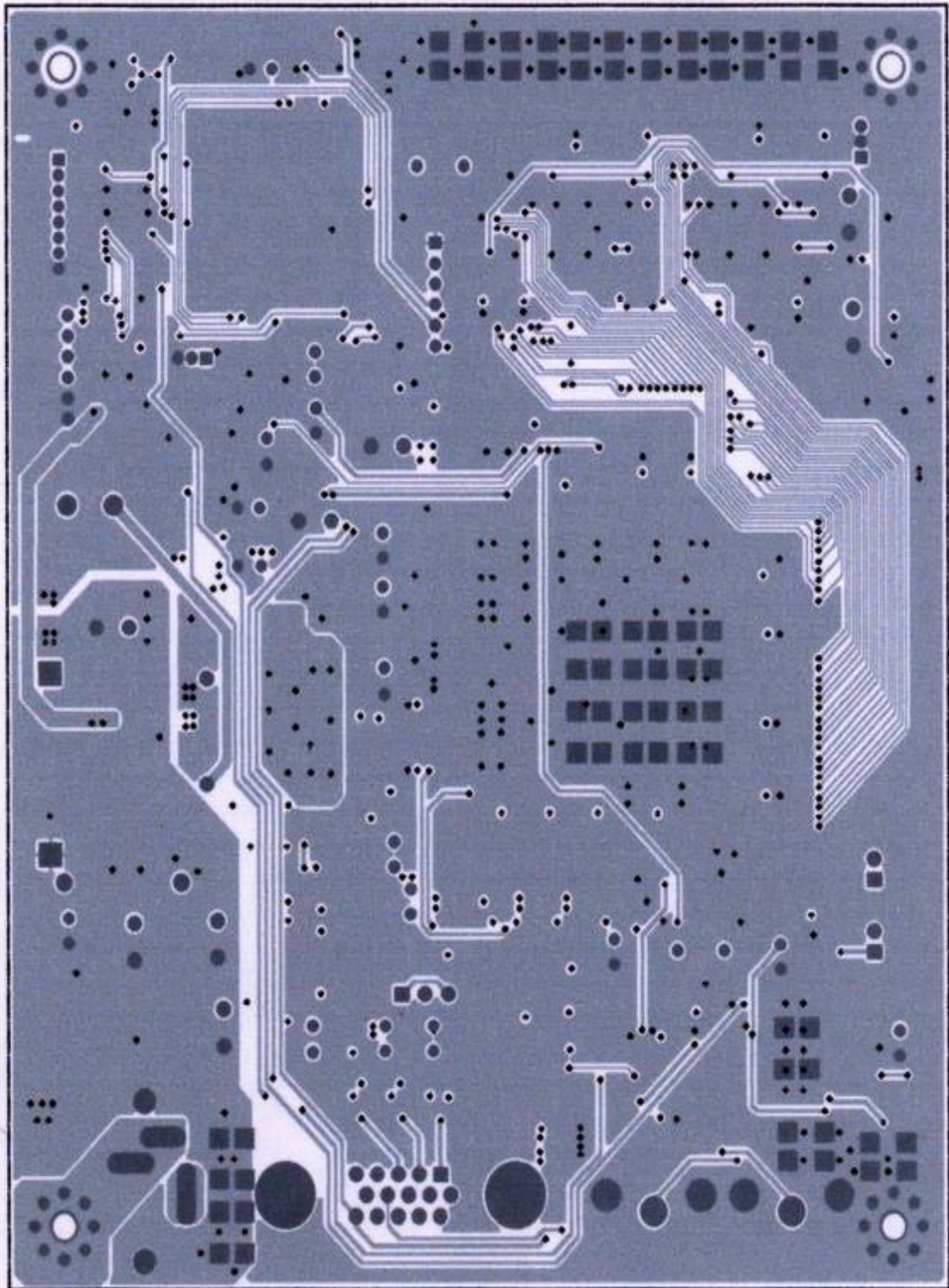
## MAIN BOARD (Component Side)



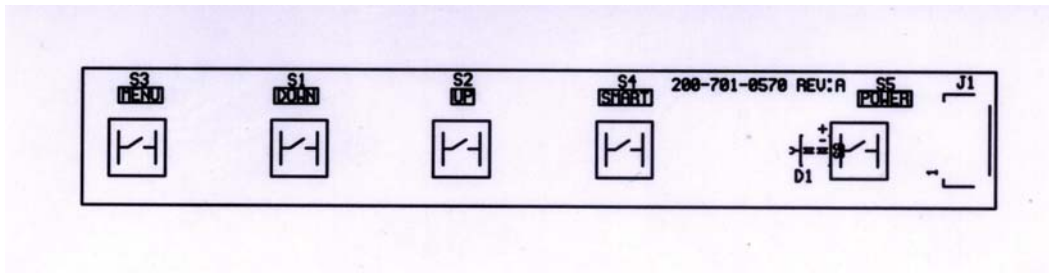
**MAIN BOARD (Component Side)**



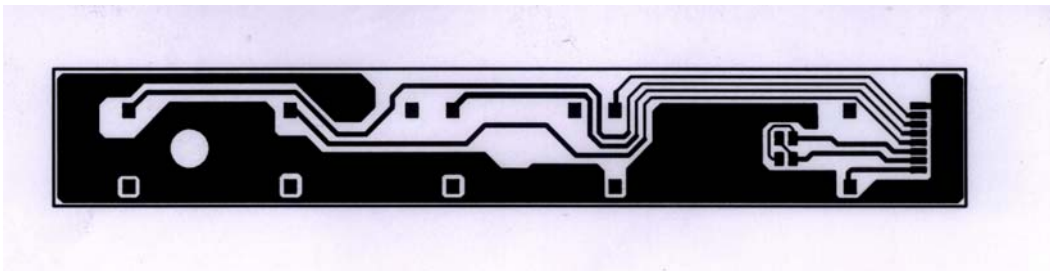
**MAIN BOARD (Solid Side)**



## CONTROL BOARD (Component Side)



## CONTROL BOARD (Solid Side)

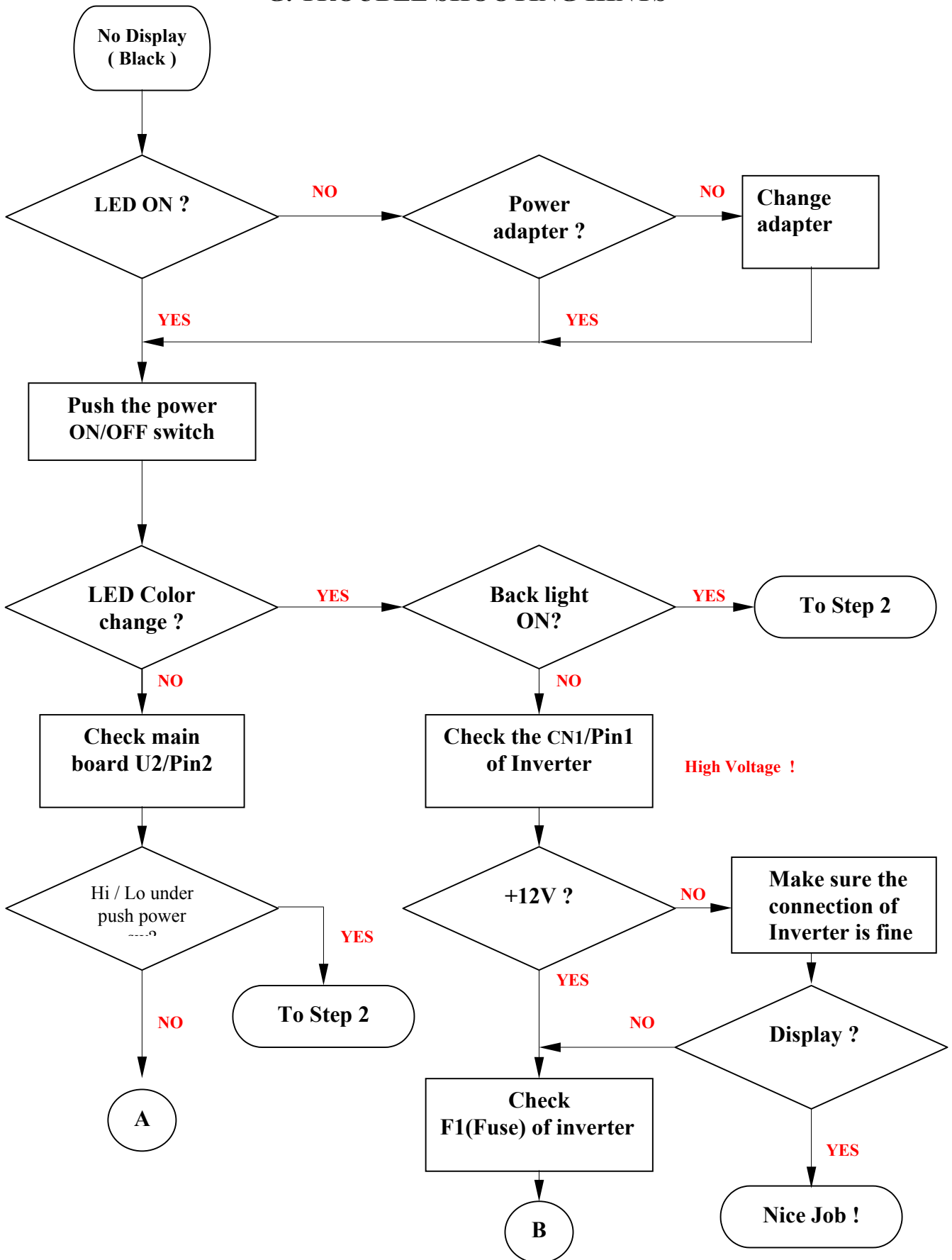




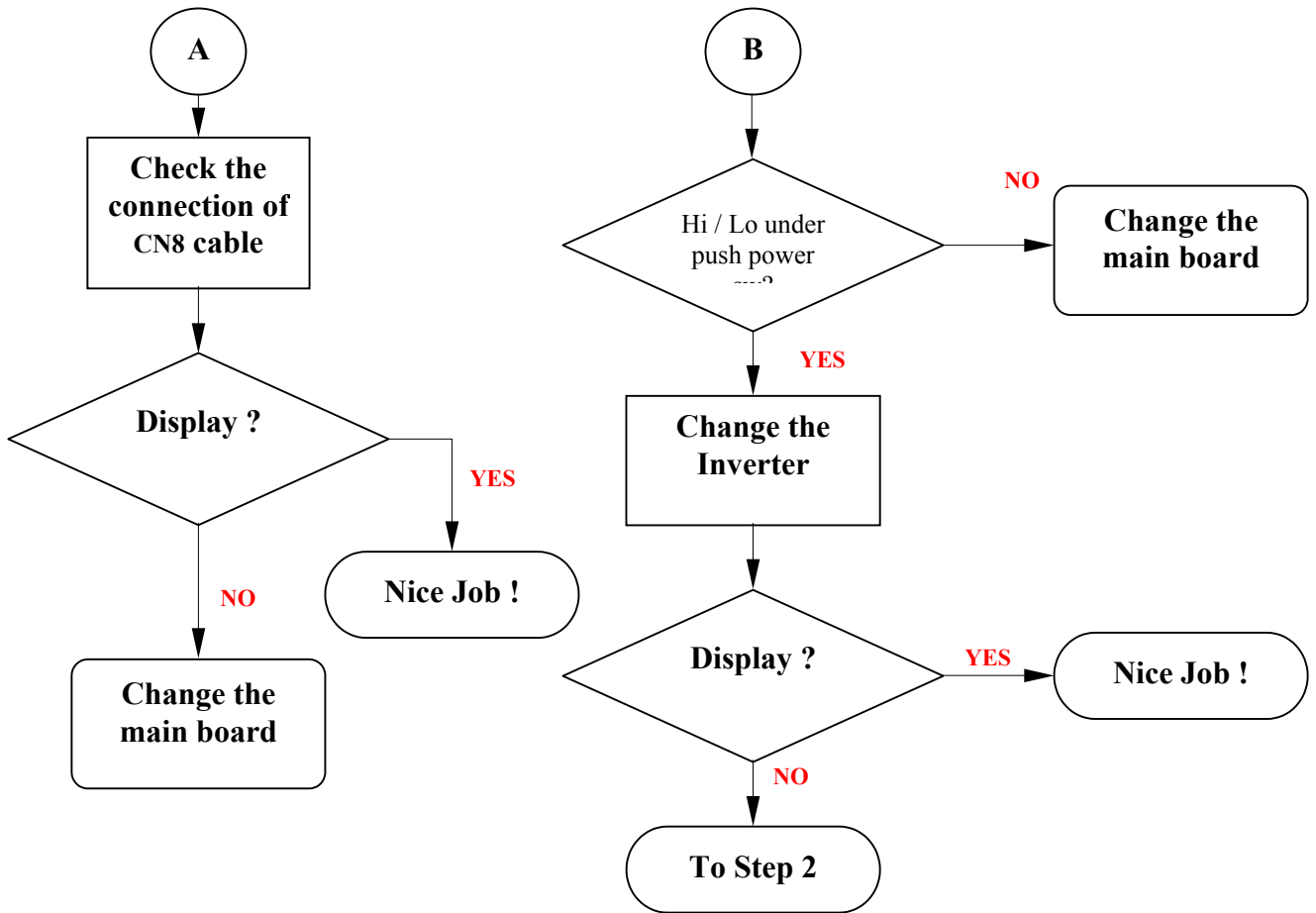
## F. ADJUSTMENT PROCEDURE

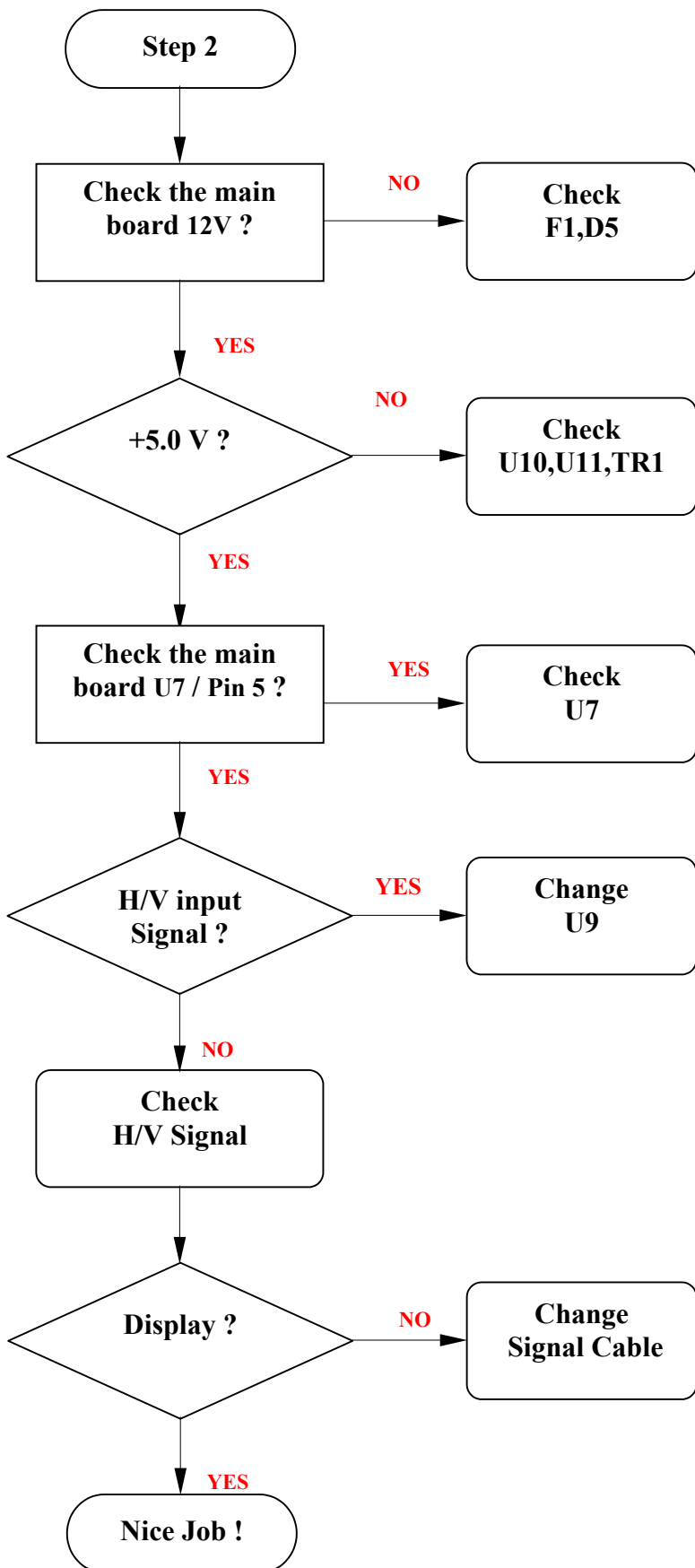
ITEM Program Menu.		# Test Meter * Test Point @ Pattern	Operation	Check Value
A	<b>B+ Check</b>	# Digital Voltmeter * CN7 @ Crosshatch Pattern (31.5KHz,640x480)	<ol style="list-style-type: none"> <li>1. Plug power cable into the adapter, check adapter power indicator light up green.</li> <li>2. Make sure the voltage of the power plug (CN7) on the main PCB to the value shown at right.</li> </ol>	12.0V ±0.2V
B	<b>Power Saving Check</b>	# Wattmeter # PC or Pattern generator @ Crosshatch Pattern (31.5KHz,640x480)	<ol style="list-style-type: none"> <li>1. Unplug the signal cable into the monitor.</li> <li>2. Turn the power switch of the monitor <b>ON</b>.</li> <li>3. Check monitor power indicator light up orange.</li> <li>4. Make sure the wattmeter value shown at right.</li> <li>5. OSD will be display “<b>NO SIGNAL</b>” Picture.</li> </ol>	< 2.5W
C	<b>Into Factory mode</b>	# PC or Pattern generator @ Crosshatch Pattern (31.5KHz,640x480)	<ol style="list-style-type: none"> <li>1. Hold &lt; key, then turn the power switch of the monitor <b>OFF</b>.</li> <li>2. Hold &gt; key, then turn the power switch of the monitor <b>ON</b>.</li> <li>3. You can into factory adjustment mode.</li> </ol>	
D	<b>Auto mode Check</b>	# PC or Pattern generator @ Crosshatch Pattern (1024x768/60Hz)	<ol style="list-style-type: none"> <li>1. Press and release the <b>MENU</b> knob to activate the OSD menu.</li> <li>2. Move the OSD to the <b>AUTO</b> function, press <b>MENU</b> key auto adjust display mode to its utmost performance according to VGA setting.</li> <li>3. In the event of the display image needs further adjustment</li> </ol>	
E	<b>White Balance Adjust</b>	# PC or Pattern generator @ White Pattern (1024x768/60Hz)	<ol style="list-style-type: none"> <li>1. Move the OSD to the <b>COLOR</b> mode (AUTO COLOR).</li> <li>2. set color is <b>9300°K</b> using the OSD, Check the value shown at right. <math>Y = 220 \pm 0.1FL</math>   <math>x = 0.283 \pm 0.01</math>   <math>y = 0.297 \pm 0.01</math></li> <li>3. set color is <b>6500°K</b> using the OSD, Check the value shown at right. <math>Y = 220 \pm 0.1FL</math>   <math>x = 0.313 \pm 0.01</math>   <math>y = 0.329 \pm 0.01</math></li> </ol>	
F	<b>OSD Language Setting</b>	# PC or Pattern generator	<ol style="list-style-type: none"> <li>1. Move the OSD to the <b>LANGUAGE</b> mode.</li> <li>2. You can choose one of the eight language you need.</li> </ol>	

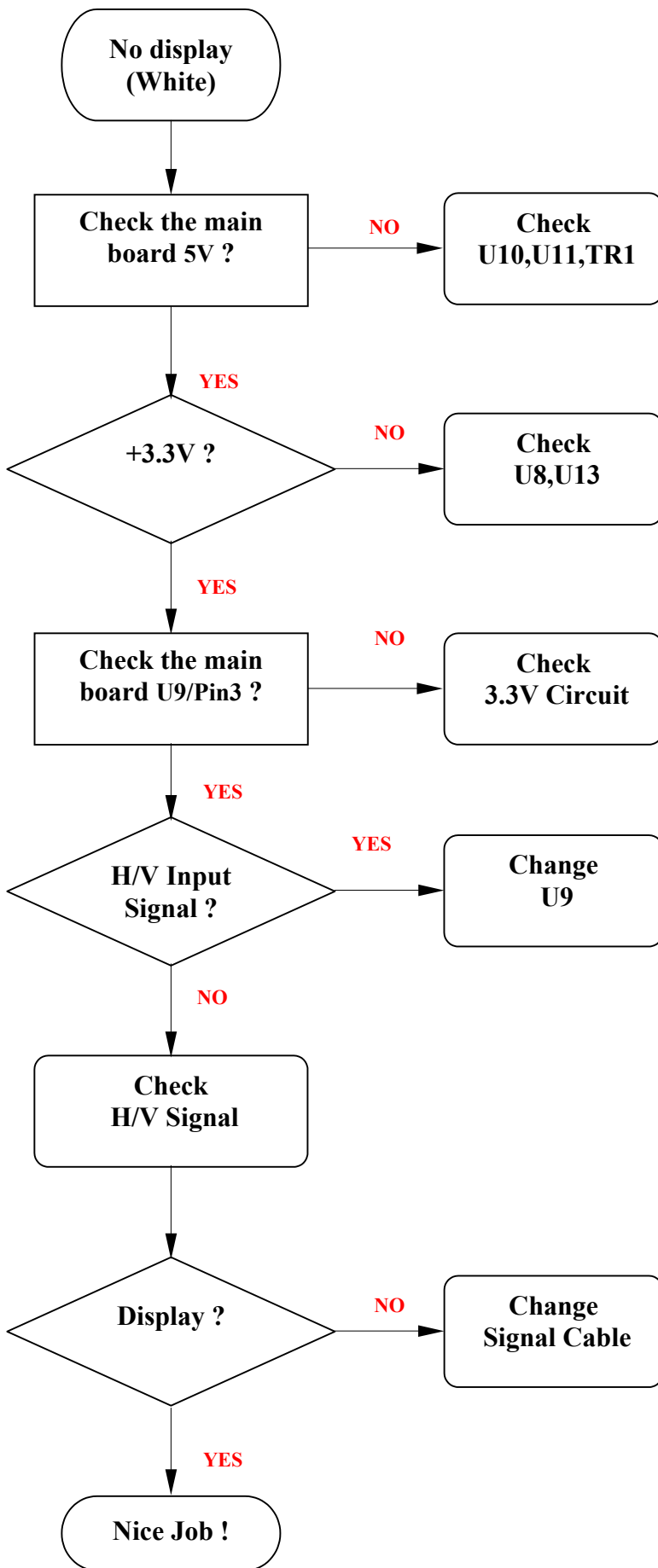
## G. TROUBLE SHOOTING HINTS











# H. REPLACEMENT PARTS LIST

770

NO	Parts No.	Description	Part Location	Q'ty
1	<b>988-1L0-6001C</b>	SH770		
2	002-001-CEPOV-A	CE Declaration		1
3	002-G01-FUJIT	FUJITSU Warranty card		1
4	002-L03-FUJIT	SH770 User's Manual for FUJITSU		1
5	003-101-TCO9	All Series TCO99 Label for Carton		1
6	003-403-FUJIT	SH770 Carton Label for FUJITSU		1
7	005-006-FUJIT	SH770 Carton FUJITSU Logo		1
8	153-007-FUJIT	SH770 Back Label FUJITSU Logo		1
9	170-000-0848C	PE Bag 0.07MM 14x30.5cm		1
10	170-005-LCD7	LCD 17" PE Bag		1
11	170-005-VM541	PE Bag 300X200mm		1
12	<b>826-000-SH770</b>	SH770		
13	003-002-0848-AM	Carton Label 70x40mm		1
14	003-002-0848-A	Carton Label 70x40mm		1
15	160-000-SH770L-A	SH770 Polyfrom L EPS		1
16	160-000-SH770R-A	SH770 Polyfrom R EPS		1
17	835-011-SH770	SH770 S7 Driver for FUJITSU		1
18	846-120-C3AL-SB	Adapter 12V 40W		1
19	<b>999-L01-SH770</b>	SH770 TUV/TCO99		
20	705-570-2603-3	AU 17" LCD Panel 170E3		1
21	849-40M-0770	Inverter for AU		1
22	<b>899-00M-SH770</b>	SH770 M/B MRT IC AU Panel		
23	851-00M-SH770	SH770 M/B MRT IC AU DIP		1
24	152-000-SH570	TOSHIBA DC Jack Support NYLON.		1
25	232-R02-505T	WR-C-5W 0.020ohm 5%	TR1	1
26	330-100-16255	5mm EC 10uF 16V 105C M TP MI.	TC1,TC5,TC8,TC11,TC12,TC15,TC16,TC18,TC21,TC24,TC25	11
27	330-101-16255	5mm EC 100uF 16V 105C M TP MI.	TC10,TC7	2
28	330-220-16255	MINI CE 22uF/16V +-20% 105C	TC17,	1
29	330-221-16255	EC H:5mm 220uF16V +-20% 105C	TC2,TC3,TC6,TC9,TC13,TC19,TC20,TC26,	8
30	330-2R2-50275	E.CAP 2.2UF/50V +-20% 4*7 105C	TC22,	1
31	330-470-16255	EC 47uF 16V 5*5 105C	TC14,TC23	2
32	409-003-0110	DC Jack	CN7,	1
33	409-003-0111	Red RCA Jack	CN10,	1
34	409-003-0112	White RCA Jack	CN9,	1
35	485-415-0005B	DB15 (D-SUB) 15P Blue	CN8,	1
36	504-000-6300L	Reset IC V6300L TD92.	TU1,	1
37	504-007-A431	KIA431/KEC	TD3,	1
38	520-007-5822	IN5822(DIP) Shottky 30V/3A ZZ	TD2,	1
39	531-110-49US	11.0592MHZ HC 49US Crystal	Y1,	1
40	531-240-49US	24MHZ HC 49US Crystal 30PPM	Y2,	1
41	630-002-1008	JWT A2001 PITCH 2.00mm 2P	CN5,CN6,	2

42	630-006-1008	JWT A2001 PITCH 2.00mm 6P.	CN4,	1
43	630-006-1009	JWT A2001 PITCH 2.00mm 6P.	CN3,	1
44	630-008-C001	JST 1.5mm Header ZR S8B-ZR.	CN2,	1
45	630-030-8001	30Pin 1.25mm Pitch SMD	CN1	1
46	745-330-2062-3	Line Choke 33uH	TL1,	1
47	780-112-8000	Bead	TL2,	1
48	<b>852-00M-SH770</b>	SH770 M/B MRT IC AU SMD		
49	200-100-SH770	SH770 Main Board PCB REV:S5	Main PCB,	1
50	281-031-20014	SMD R 2K 1% 0603	R56,	1
51	281-031-62014	SMD R 6.2K 0603.	R53,	1
52	281-035-0R04	RES 0ohm 5% 1/10W 0603 SMD	R15,R16,R25,R27,R48,R49,R62,R67,R68,R69,R70,R71, R72,R74,R99,R100,L11,L13,L16,L21,L22,L29,L30,	23
53	281-035-1024	RES 1K 5% 1/10W 0603 SMD	R9R10,R28,R37,R39,R78,	6
54	281-035-1034	RES 10K 5% 1/10W 0603 SMD	R3,R4,R8,R11,R33,R40,R54,R58,R59,R73,	10
55	281-035-1054	RES 1M 5% 1/10W 0603 SMD	R12,	1
56	281-035-1514	RES 150 5% 1/10W 0603 SMD	R31,R32,	2
57	281-035-1814	RES 180 5% 1/10W 0603 SMD	R63,	4
58	281-035-2034	RES 20K 5% 1/10W 0603 SMD	R65,R76,R82,R87,R88,R90,R92,R93,	8
59	281-035-2204	RES 22 ohm 5% 1/10W 0603 SMD	R44,R45,R50,R51,R52,R60,R61,	7
60	281-035-2224	RES 2.2K 5% 1/10W 0603 SMD	R20,R35,R38,	3
61	281-035-3304	RES 33 ohm 5% 1/10W 0603 SMD	R1,R2,R24,R30,R34,R36,R46	7
62	281-035-3314	RES 330 5% 1/10W 0603 SMD	R6,R7,R26,	3
63	281-035-3334	RES 33K 5% 1/10W 0603 SMD	R66,R91,	2
64	281-035-4704	RES 4.7 5% 1/10W 0603 SMD	R22,R23,	2
65	281-035-4724	RES 4.7K 5% 1/10W 0603 SMD	R17,R29,R41,R42,R94,R95,	6
66	281-035-4734	RES 47K 5% 1/10W 0603 SMD.	R77,R85,	2
67	281-035-5104	RES 51 5% 1/10W 0603 SMD.	R22,R23,R83,R84,	4
68	281-035-7504	SMD R 75 ohm 0603.	R79,R80,R81,	3
69	281-045-0R04	RES 0 ohm 5% 1/8W 0805	R47,	1
70	282-103-2454	RES-NET 10K 5% SMD 8P4R.	RP3,	1
71	282-330-2454	RES-NET 33 ohm 5% SMD 8P4R.	RP1,RP4,RP5,RP6,RP7,RP8,RP9,RP10,RP11,RP12, RP13,RP14,RP15,RP16,	14
72	381-151-032554	SMD CC 150PF 25V NPO 0603.	CP1,	1
73	381-220-032554	SMD CC 22pF 25V NPO 0603.	C2,C4,C14,C15,C34,C35,C36,C38,C39,C40,C44,C45, C57,C58,C59,C66,C67,C78,C79,C98,C99	21
74	381-330-032554	NPO 33PF/25V +-5% 0603 SMD	C94,C103,	2
75	381-331-032554	NPO 330PF/25V +-5% 0603 SMD	C48,C63,	2
76	382-103-032564	SMD CC 0.01uF/25V X7R 0603.	C26,C70,C71,C83,C84,C86,C87,C88,C89	9
77	382-393-032564	SMD CC 0.039uF/25V X7R 0603.	CZ1,	1
78	382-472-035064	X7R 4700pF/50V +-10% 0603 SMD	C69,C73,C75,	3
79	382-682-035064	X7R 6800P/50V +-10% 0603 SMD.	C93,C102,	2
80	385-104-032584	Y5V 0.1u/25V +80%- 20% 0603	C1,C3,C5,C6,C7,C8,C9,C10,C11,C12,C13,,C16,C17, C18,C19,C20,C21,C22,C23,C24,C25,C27,C28,C30, C31,C33,C41,C42,C43,C46,C47,C49,C50,C51,C52, C53,C54,C55,C56,C60,C61,C62,C64,C65,C68,C72, C74,C76,C77,C80,C81,C82,C90,C91,C110,C111	56
81	385-105-031684	Y5V 1uF/16V +80-20% 0603.	C29,C32,C37,	3
82	385-334-032584	Y5V 0.33u/25V +80-20% 0603	C105,C106	2

83	481-LCC-0440	SOCKET 44PIN PLCC.	Socket for U2,	1
84	506-0AI-C1084	SMD REG. AIC1084CM 3.3V 5A.	U8,	1
85	506-A0I-CY33	AIC1117CY-33 3.3V 900mA SMD	U13	1
86	506-0AP-4835	APA4835RI/ANPEC AUDIO AMP.	U15,	1
87	506-0CS-5828	LVD (8bit 56Pin) TSSOP	U3,U4	2
88	506-2AI-C1578	IC DC to DC IC.AIC1578(SMD).	U11,	1
89	506-524-LC21	Memory IC 24LC21 SMD.	U14,	1
90	506-5NM-24C16	24C16 SO8 MEMORY IC SMD.	U1,	1
91	506-774-LCX14	74LCX SOIC14 HI SPEED TTL SMD	U12,	1
92	506-800-358D	LM358D SO8 OP AMP IC.	U7,	1
93	506-SMA-SCOTVP2	SCALER CHIP MASCOTVP2 MRT.	U9,	1
94	506-XXP-2008A	IC EMI Reduction IC P2008A	U16,	1
95	518-02N-3904	NPN 2N3904S (SMD).	Q1,Q2,Q3,	3
96	518-1CE-9435	MOSFET CE9435A S08.	U5,U10,	2
97	528-2BA-T54C	SMD Diode BAT54C SOT23.	D8,	1
98	558-352-5000	SMD Fuse 1206 24V 5A.	F1,	1
99	780-103-3000	SMD Bead SBK160808300Y0603 30Ω	L2,L3,L4,L5,L6,L7,L17,L18,L23,L24,L25,L31,L32	13
100	780-103-3000A	SMD Bead FCM1608K-300T07	L26,L27,L28,	3
101	780-104-6010	FB 0805/600 ohm 100MHz	L1,L10,L12,L15,L19,L20,	6
102	780-104-8000A	Bead MLB-201209-0800T-N2	L8	1
103	780-107-1210	FB Bead 120R 100H 120 ohm 1206	L9,L14	2
104	<b>899-400-SH570</b>	<b>SH-570 Control Board ASS'Y.</b>		
105	851-400-SH570	SH-570 Control Board ASS'Y.		1
106	200-701-0570	570/770 Control Board REV:S3	PCB,	1
107	403-722-0502	SMD Tact SW H3. 1mm 100g	S1,S2,S3,S4,S5,	5
108	528-LPB-3025	SMD LED Green (KPB-3025SGYW).	D1,	1
109	630-008-S001R	SMD 1.0 Base 8PIN	J1,	1
110	902-SH0-6001C	SH-770 TUV/GS TCO99 Ass'y AU(FUJITSU)		1
111	123-B01-SH770-A	SH770 Frant Panel FUJITSU Logo 425C	Frant Panel (Color :Silver)	1
112	123-C00-SH770-A	SH770 Rear Cover A5052P T=1.2.	Rear Cover	1
113	154-000-5TAU-B	AU Main Frame ABS/PC 8403C		1
114	110-3R0-20649	Screw M3*Φ5.2**5.5.		4
115	110-3R0-2064B	Screw M3*Φ5.0*6.0.		6
116	154-000-SH770-A	Speaker Lock Knob ABS/HB		1
117	154-001-SH570-A	TOSHIBA Key Set ABS/HB		1
118	154-005-SH570	Key Panel PMMA T=1.5mm.		1
119	600-181-0400	Power Cord (Detachable for Germany)	Power Cord	1
120	610-151-15RM-1	SH570/770 Wire UL20276 1.5m		1
121	631-003-A014-C	Audio Cable 3.5D Stereo to 2*RCA	Audio Cable	1
122	<b>820-300-7TST</b>	<b>SH770 Stand Ass'y .</b>		
123	121-300-5TST	Bracket Ass'y		1
124	121-300-SH570	Bracket Ass'y		1
125	121-000-SH570-A	SH570 Bracket SPCC T=1.0mm		1
126	121-001-SH570-A	SH570 Lock Plate SPCC T=1.0mm		1

127	123-003-SH570	SH570 Bracket Spring		1
128	132-300-SH570	Spring Ass'y		1
129	101-003-3033	Screw M3*3 ISO		1
130	132-001-SH570	SH570 Lock Spring		1
131	<b>820-000-7TST</b>	<b>SH770 Stand Ass'y</b>		
132	123-700-7TST	SH770 Base Ass'y		1
133	123-000-SH570	SH570 Hinge Cover A6063		1
134	123-002-SH770	SH770 Base Pin SUS304		2
135	123-700-SH770	SH770 Base A6063		1
136	123-701-SH770	SH770 Base Neck A6063?		1
137	126-000-SH770	SH770 Hinge		1
138	123-70X-7TST	SH770 Base Ass'y		1
139	101-010-4033	Screw M4*10 ISO		2
140	132-000-SH770	SH770 Base Spring 5.2*46.8.		1
141	153-001-SH570	SH570 Rubber Foot		5
142	154-003-SH570	TOSHIBA Base Locket POM		1
143	154-010-SH570	PVC film 132*1.5*0.5T		1
144	170-F00-SH770	SH-770 Bag for Base Ass'y		1
145	<b>824-000-SH770</b>	<b>SH770 Speaker with Box</b>		
146	100-006-2011	Screw M2*3mm TP1		4
147	101-005-3033	Screw M3*5 ISO		2
148	109-006-3033	Screw AU (M3*6.0*HEX1.5)		3
149	121-002-SH570	570 Bracket Hook Spec. T=1.0mm.		2
150	123-001-SH570	SH570 TOSHIBA Speaker Body A6063.		1
151	123-004-SH570	Speaker Net.		1
152	126-002-SH570	SH570 Speaker CN Contact		4
153	132-00L-SH570	SH570 Speaker Spring Left		1
154	132-00R-SH570	SH570 Speaker Spring Right		1
155	152-001-SH570L	Speaker Support Left ABS/HB 8403C.		1
156	152-001-SH570R	Speaker Support Right ABS/HB 8403C		1
157	152-002-SH570	TOSHIBA CN Housing 2 NYLON66.		2
158	621-065-2508	LCD Wire UL2547#28AWG 2C 165mm		2
159	710-203-SHSE	Speaker 3W/8ohm 34*34mm.		2
160	827-001-SH770	SH-770 LCD Cover Ass'y for AU.		1
161	003-H01-0770	For 770 Heatsink		1
162	101-005-3033	Screw M3*5 ISO		10
163	101-008-3013	Screw 3*8 TP1		2
164	107-008-3033	Screw 3*8 ISO		4
165	109-006-3033	Screw AU (M3*6.0*HEX1.5)		4
166	109-120-3033	Screw M3*12*HEX1.5		4
167	110-3R0-20649	Screw M3*Φ5.2**5.5.		4
168	110-3R0-2064B	Screw M3*Φ5.0*6.0.		6
169	120-005-SH770	Heatsink 35x35x2.5mm		1
170	121-000-SH770	Inner Cover SECC T= 1.0mm		1

171	121-00L-SH770	LCM Bracket Left SECC T= 1.0mm		1
172	121-00R-SH770	LCM Bracket Right SECC T= 1.0mm		1
173	123-003-SH770	Shield Cover		1
174	123-00L-SH770	SH770 Speaker Lock Left		1
175	123-00R-SH770	SH770 Speaker Lock Right		1
176	126-001-SH570-A	SH570 CN Contact TOSHIBA		4
177	126-006-ALM1	SH770 Aluminium foil 100*W6mm		1
178	126-012-ALM1	SH770 Aluminium foil 80*W12mm		1
179	126-030-ALM2	Aluminium foil1 150X30mm.		1
180	126-030-ALP1	Aluminium foil 80X30mm for EMI		1
181	126-030-ALP2	Aluminium foil 180X30mm for EMI		1
182	126-030-ALP3	Aluminium foil 120X30mm for EMI		1
183	126-030-ALP5	Aluminium foil 25X30mm for EMI		1
184	126-030-ALP6	Aluminium foil 50X30mm for EMI		1
185	126-040-ALP1	Aluminium foil 65*W40mm		1
186	126-040-ALP2	Aluminium foil 140*W40		1
187	131-030-2120	D-Sub Connector Screw		2
188	152-001-SH570-A	TOSHIBA CN Housing 1 NYLON66		2
189	154-001-SH770	SH770 Insulator film		1
190	154-004-SH570-A	LDE LENS		1
191	154-006-SH570-A	MYLAR Sheet T=0.1mm.		1
192	506-178-E62BP-40	SMD CPU IC (WINBOND:W78E62BP-40)	MCU,	1
193	540-100-3035	Silicon Rubber 35x35x0.5mm		1
194	631-002-7006-T	Twist Wire 2Pin 280mm Pitch=2.0mm		1
195	631-002-7007-T	Twist Wire 2Pin 130mm Pitch=2.0mm		1
196	631-006-7020-T	SH570/770 Wire 1061#28 6P2.0mm		1
197	631-008-G010-W	SH570/770 Wire 8P 280mm With Core	CTR/B->M/B,	1
198	631-030-J007-C	Twist Wire 30Pin Pitch 1.0—1.5mm		1
199	760-300-0027	LCD Ferrite Core K5A 12.7*10*7.9mm		1
200	831-B10-0307	Conductive Gasket 30x10x5mm		1
201	831-B15-0300	Conductive Gasket 20x15x15mm		1



## PARTS LIST M074

SYM	PART NUMBER	DESCRIPTION	QUANT	ITEM NO.	MFRS.	INS.
C1	25MV100SGX+TS	CAPACTOR	1.	C01-004S	SANYO	
C2	N.A					
C3	C1608X7R1E104KT GRM39X7R104K25	OR CAPACTOR	1.	C03-065T C03-065U	TDK MURATA	
C4	C1608X7R1E104KT GRM39X7R104K25	OR CAPACTOR	1.	C03-065T C03-065U	TDK MURATA	
C5	N.A					
C6	C1608X7R1E104KT GRM39X7R104K25	OR CAPACTOR	1.	C03-065T C03-065U	TDK MURATA	
C7	N.A					
C8	C1608X7R1H681KT GRM39X7R681K50	OR CAPACTOR	1.	C03-082T C03-082U	TDK MURATA	
C9	N.A					
C10	C2012Y5V1C225ZT	CAPACTOR	1.	C03-446T	TDK	
C11	RSBEC3180DQJ	CAPACTOR	1.	C02-016R	ARCO	
C12	CC45SL3FD270JY	CAPACTOR	1.	C04-925T	TDK	
C13	CC45SL3FD270JY	CAPACTOR	1.	C04-925T	TDK	
C14	N.A					
C15	C1608X7R1E104KT GRM39X7R104K25	OR CAPACTOR	1.	C03-065T C03-065U	TDK MURATA	
C17	RSBEC3180DQJ	CAPACTOR	1.	C02-016R	ARCO	
C18	CC45SL3FD270JY	CAPACTOR	1.	C04-925T	TDK	
C19	CC45SL3FD270JY	CAPACTOR	1.	C04-925T	TDK	
C20	N.A					
C21	C1608X7R1E104KT GRM39X7R104K25	OR CAPACTOR	1.	C03-065T C03-065U	TDK MURATA	
C22	C1608Y5V1A105ZT GRM39Y5V105Z10	OR CAPACTOR	1.	C03-487T C03-476U	TDK MURATA	
C23	N.A					
C24	C1608Y5V1A105ZT GRM39Y5V105Z10	OR CAPACTOR	1.	C03-487T C03-476U	TDK MURATA	
C27	N.A					
C28	N.A					
C29	C2012Y5V1C225ZT	CAPACTOR	1.	C03-446T	TDK	
C30	C1608Y5V1A105ZT GRM39Y5V105Z10	OR CAPACTOR	1.	C03-487T C03-476U	TDK MURATA	
				MODEL	M074	DATE
				DRAWN	Linda	6/18/02
				DESIGNED	KEN	6/18/02
				LEADER	<i>[Signature]</i>	6/18/02
REV.	DATE	DESCRIPTION	DESIGNED	APV.	MANAGER	<i>[Signature]</i> 6/18/02
<b>MULTIPAL TECHNOLOGY CORP.</b>					<b>EPLAM0740</b>	PAGE 1/5

## PARTS LIST M074

SYM	PART NUMBER	OR	DESCRIPTION	QUANT	ITEM NO.	MFRS.	INS.
C31	C1608Y5V1A105ZT	OR	CAPACTOR	1.	C03-487T	TDK	
	GRM39Y5V105Z10				C03-476U	MURATA	
R2	RC0805FR-220R	OR	RESISTOR	1.	R02-034Y	YAGEO	
	RMC10P2200F				R02-034K	KAMAYA	
R3	RC0603FR-10K	OR	RESISTOR	1.	R01-077Y	YAGEO	
	RMC16P1002F				R01-077K	KAMAYA	
R4	N.A						
R6	RC0603FR-100K	OR	RESISTOR	1.	R01-102Y	YAGEO	
	RMC16P1003F				R01-102K	KAMAYA	
R7	RC0603FR-100K	OR	RESISTOR	1.	R01-102Y	YAGEO	
	RMC16P1003F				R01-102K	KAMAYA	
R8	RC0603FR-750K	OR	RESISTOR	1.	R01-124Y	YAGEO	
	RMC16P7503F				R01-124K	KAMAYA	
R9	RC0603FR-10K	OR	RESISTOR	1.	R01-077Y	YAGEO	
	RMC16P1002F				R01-077K	KAMAYA	
R10	RC0603FR-10K	OR	RESISTOR	1.	R01-077Y	YAGEO	
	RMC16P1002F				R01-077K	KAMAYA	
R11	RC0603FR-10K	OR	RESISTOR	1.	R01-077Y	YAGEO	
	RMC16P1002F				R01-077K	KAMAYA	
R12	N.A						
R13	RC0805FR-3K	OR	RESISTOR	1.	R02-062Y	YAGEO	
	RMC10P3001F				R02-062K	KAMAYA	
R14	N.A						
R15	N.A						
R16	RC0603FR-33K	OR	RESISTOR	1.	R01-088Y	YAGEO	
	RMC16P3302F				R01-088K	KAMAYA	
R17	N.A		RESISTOR				
R18	RC1206FR-1K	OR	RESISTOR	1.	R03-052Y	YAGEO	
	RMC14P1001F				R03-052K	KAMAYA	
R19	RC0603FR-1K	OR	RESISTOR	1.	R01-052Y	YAGEO	
	RMC16P1001F				R01-052K	KAMAYA	
R20	RC0805FR-43K	OR	RESISTOR	1.	R02-091Y	YAGEO	
	RMC10P4302F				R02-091K	KAMAYA	
R21	RC0603FR-100K	OR	RESISTOR	1.	R01-102Y	YAGEO	
	RMC16P1003F				R01-102K	KAMAYA	
R22	RC0603FR-51K	OR	RESISTOR	1.	R01-093Y	YAGEO	
					MODEL	M074	DATE
					DRAWN	Linda	6/18/02
					DESIGNED	KEN	6/18/02
					LEADER	Ken	6/18/02
REV.	DATE	DESCRIPTION	DESIGNED	APV.	MANAGER	D.H. Lee	6/18/02
<b>MULTIPAL TECHNOLOGY CORP.</b>					<b>EPLAM0740</b>		PAGE 2/5

## PARTS LIST M074

SYM	PART NUMBER		DESCRIPTION	QUANT	ITEM NO.	MFRS.	INS.
R22	RMC16P5102F		RESISTOR	1.	R01-093K	KAMAYA	
R23	RC0603FR-62K	OR	RESISTOR	1.	R01-097Y	YAGEO	
	RMC16P6202F				R01-097K	KAMAYA	
R24	RC0805FR-3K	OR	RESISTOR	1.	R02-062Y	YAGEO	
	RMC10P3001F				R02-062K	KAMAYA	
R25	N.A						
R26	N.A						
R27	RC0603FR-33K	OR	RESISTOR	1.	R01-088Y	YAGEO	
	RMC16P3302F				R01-088K	KAMAYA	
R28	RC1206FR-1K	OR	RESISTOR	1.	R03-052Y	YAGEO	
	RMC14P1001F				R03-052K	KAMAYA	
R29	N.A						
R30	RC0603FR-1K	OR	RESISTOR	1.	R01-052Y	YAGEO	
	RMC16P1001F				R01-052K	KAMAYA	
R31	RC0805FR-43K	OR	RESISTOR	1.	R02-091Y	YAGEO	
	RMC10P4302F				R02-091K	KAMAYA	
R32	RC0603FR-100K	OR	RESISTOR	1.	R01-102Y	YAGEO	
	RMC16P1003F				R01-102K	KAMAYA	
R33	RC0603FR-51K	OR	RESISTOR	1.	R01-093Y	YAGEO	
	RMC16P5102F				R01-093K	KAMAYA	
R34	RC0603FR-62K	OR	RESISTOR	1.	R01-097Y	YAGEO	
	RMC16P6202F				R01-097K	KAMAYA	
R35	RC0603FR-62K	OR	RESISTOR	1.	R01-097Y	YAGEO	
	RMC16P6202F				R01-097K	KAMAYA	
R36	RC0603FR-10K	OR	RESISTOR	1.	R01-077Y	YAGEO	
	RMC16P1002F				R01-077K	KAMAYA	
R37	RC0603FR-10K	OR	RESISTOR	1.	R01-077Y	YAGEO	
	RMC16P1002F				R01-077K	KAMAYA	
R38	RC0603FR-100R	OR	RESISTOR	1.	R01-027Y	YAGEO	
	RMC16P1000F				R01-027K	KAMAYA	
R39	RC0603FR-100R	OR	RESISTOR	1.	R01-027Y	YAGEO	
	RMC16P1000F				R01-027K	KAMAYA	
R40	N.A						
R41	RC1206FR-1K	OR	RESISTOR	1.	R03-052Y	YAGEO	
	RMC14P1001F				R03-052K	KAMAYA	
R42	N.A						
					MODEL	M074	DATE
					DRAWN	Linda	6/18/02
					DESIGNED	KEV	6/18/02
					LEADER	<i>[Signature]</i>	6/18/02
REV.	DATE	DESCRIPTION	DESIGNED	APV.	MANAGER	A.H.W.	6/18/02
<b>MULTIPAL TECHNOLOGY CORP.</b>					<b>EPLAM0740</b>		PAGE 3/5

## PARTS LIST M074

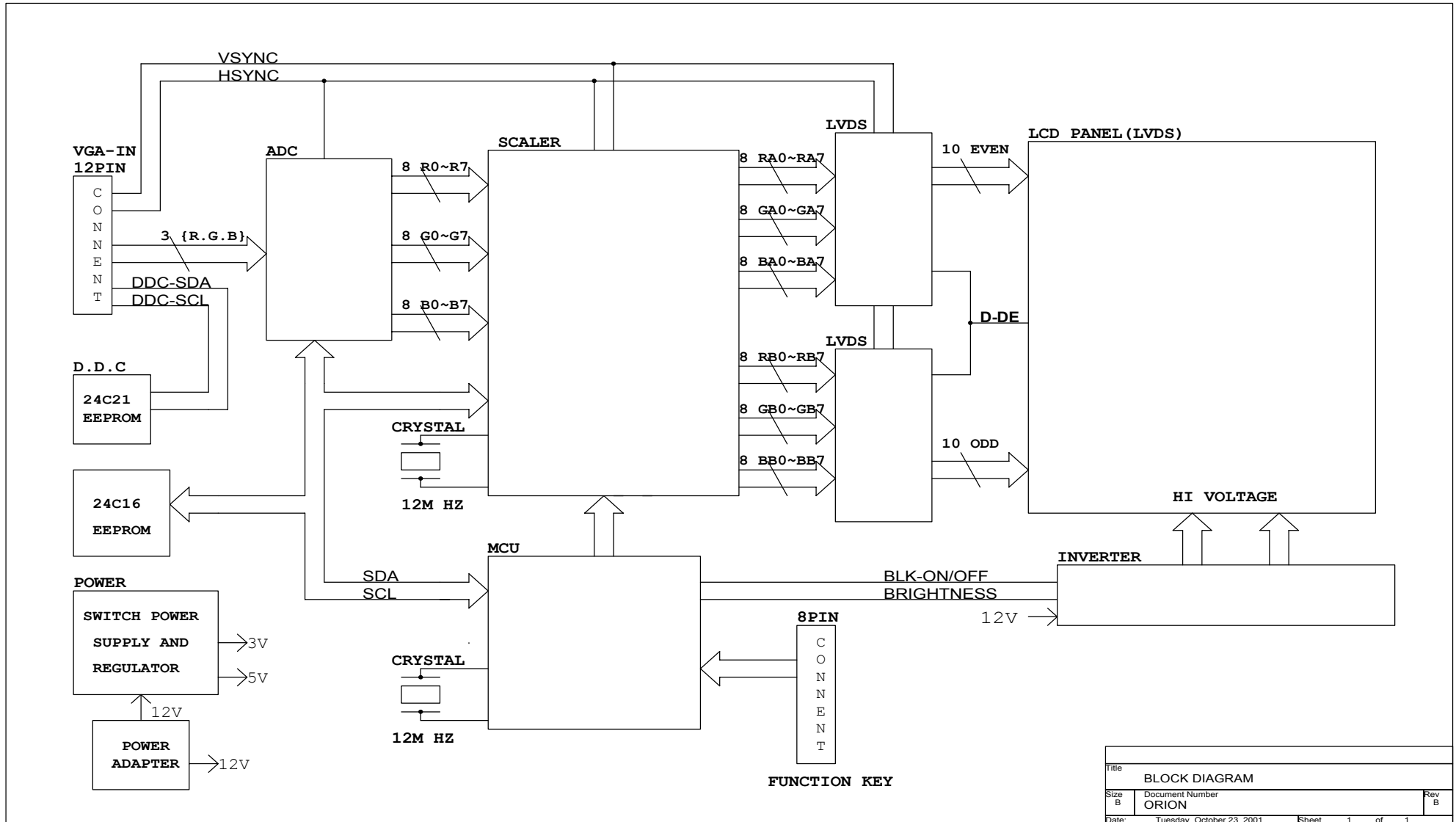
SYM	PART NUMBER	DESCRIPTION	QUANT	ITEM NO.	MFRS.	INS.
R43	RC1206FR-1K RMC14P1001F	OR RESISTOR	1.	R03-052Y R03-052K	YAGEO KAMAYA	
R44	N.A					
R45	N.A					
J1	JS-1125R-06 JH2-20-0648	OR CONNECTOR	1.	J01-002Y J01-002B	CHYAO SHIUN FCN	
G1	C002	CABLE	1.	G02-003J	JST	
G2	C002	CABLE	1.	G02-003J	JST	
F1	3216FF 3A 429 003	OR FUSE	1.	F01-003B F01-003L	BUSINNES LITTELFUSE	
B1	M074 M074	OR PCB	1.	B02-074P/3 B02-074H/3	POL CHIUN YANG	
T1	T08118 TME011925065	OR TRANSFORMER	1.	T02-033T T02-033R	TMP TRANSMORE	
T2	T08118 TME011925065	OR TRANSFORMER	1.	T02-033T T02-033R	TMP TRANSMORE	
L1	D108C-101K RCP1008-101K	OR INDUCTOR	1.	L01-023L L01-023S	LONGVIEW STAR	
L2	D108C-101K RCP1008-101K	OR INDUCTOR	1.	L01-023L L01-023S	LONGVIEW STAR	
U1	BA9741FP-E2	IC	1.	U02-005R	ROHM	
D1	EC21QS04-TE12R SMA240LV	OR DIODE	1.	D02-002I D02-002F	INTECH FCI	
D3	UDZS TE-1713B KDZ13V	OR DIODE	1.	D03-018R D03-018K	ROHM KEC	
D5	MA157A DAN217 T146 ISS226-TE85L	OR DIODE	1.	D01-002P D01-002R D01-002T	PANASONIC ROHM TOSHIBA	
D6	EC21QS04-TE12R SMA240LV	OR DIODE	1.	D02-002I D02-002F	INTECH FCI	
D8	UDZS TE-1713B KDZ13V	OR DIODE	1.	D03-018R D03-018K	ROHM KEC	
D10	MA157A DAN217 T146 ISS226-TE85L	OR DIODE	1.	D01-002P D01-002R D01-002T	PANASONIC ROHM TOSHIBA	
Q1	DTC114EUA T106	OR TRANSISTOR	1.	Q02-002R	ROHM	

REV.	DATE	DESCRIPTION	DESIGNED	APV.	MANAGER	DATE
					<i>S. A. Lim</i>	6/18/02



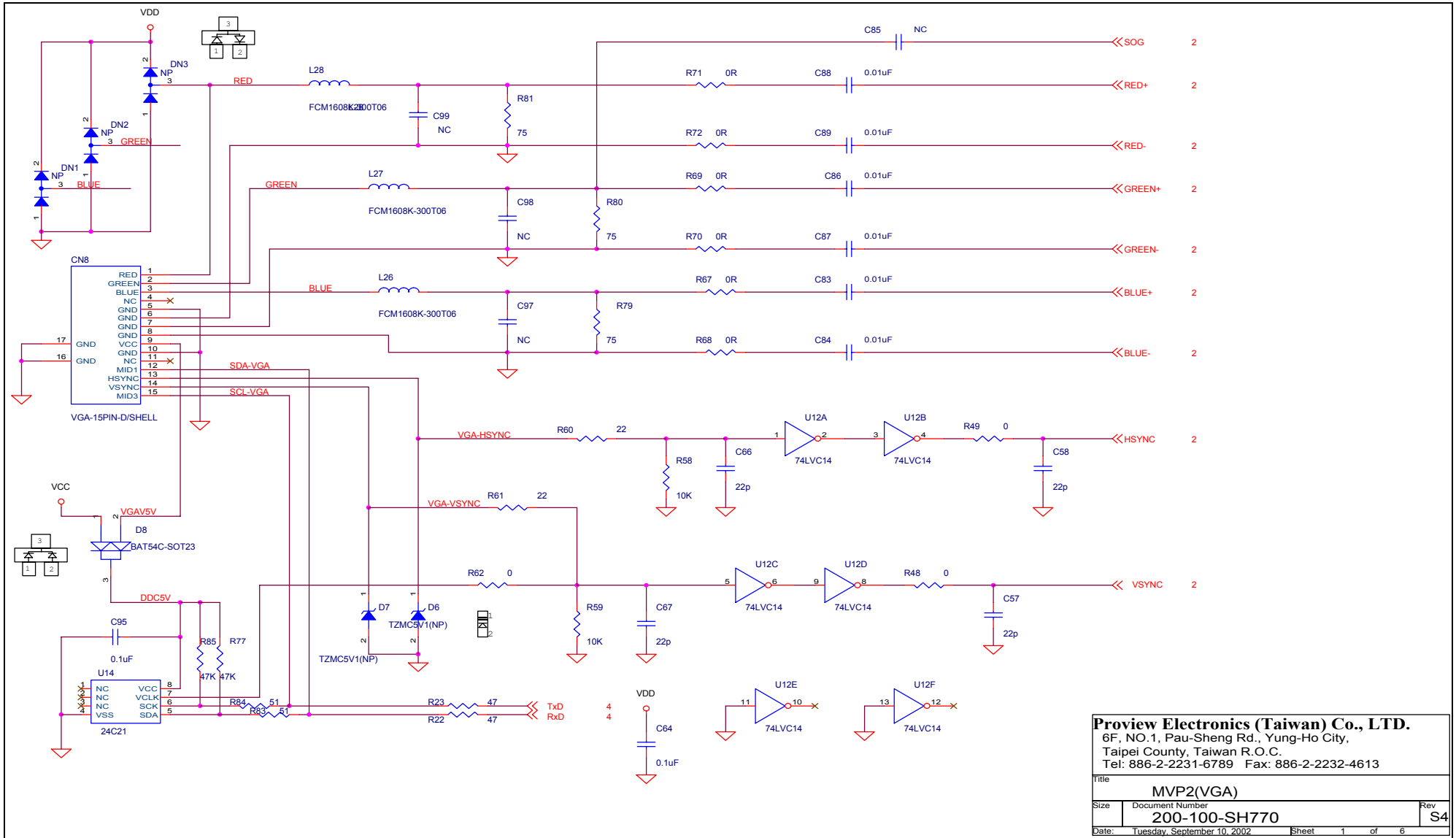


# I. BLOCK DIAGRAM



Title		
BLOCK DIAGRAM		
Size	Document Number	Rev
B	ORION	B
Date:	Tuesday, October 23, 2001	Sheet 1 of 1

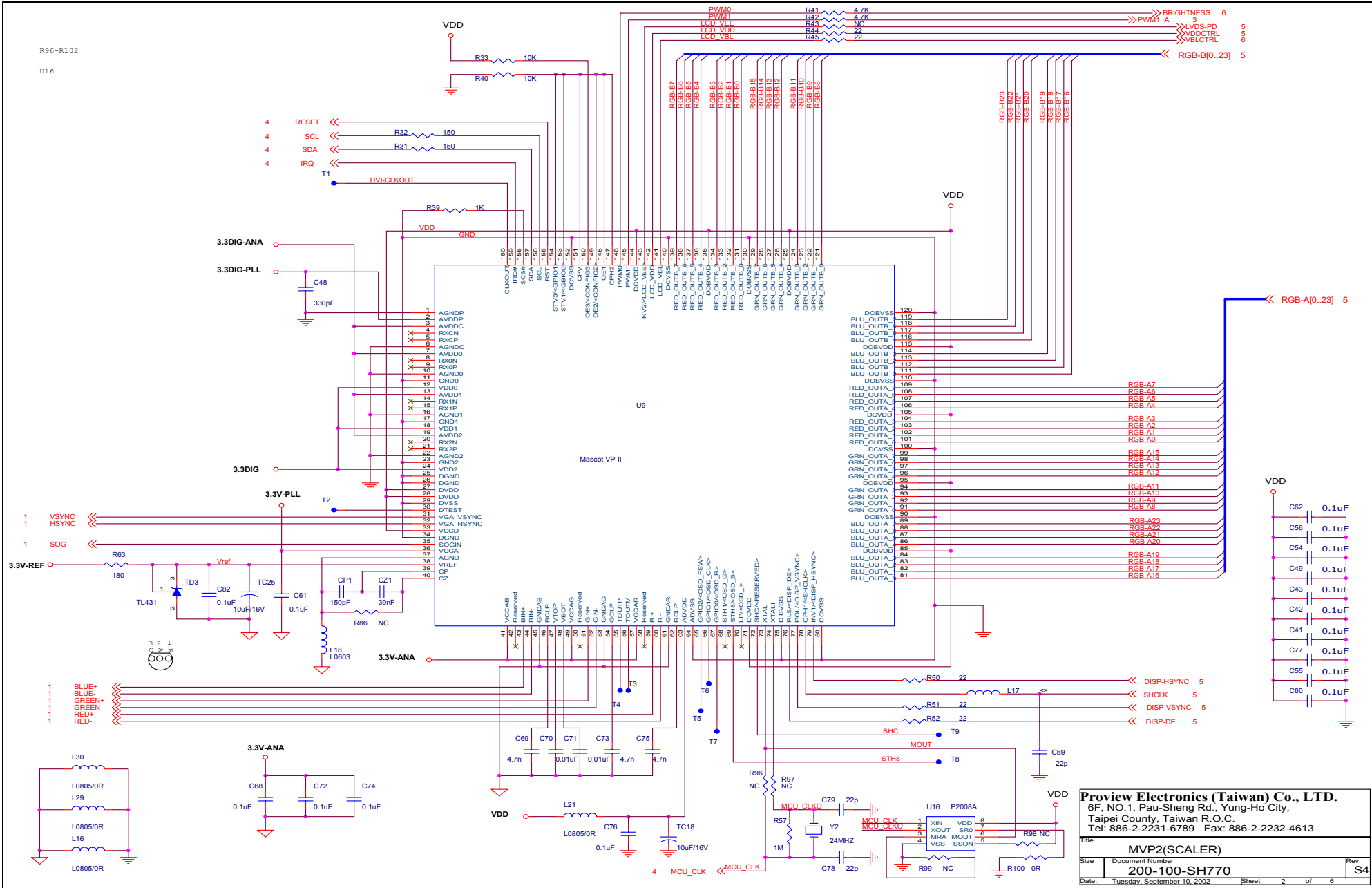
# J. SCHEMATIC DIAGRAM



**Proview Electronics (Taiwan) Co., LTD.**  
 6F, NO.1, Pau-Sheng Rd., Yung-Ho City,  
 Taipei County, Taiwan R.O.C.  
 Tel: 886-2-2231-6789 Fax: 886-2-2232-4613

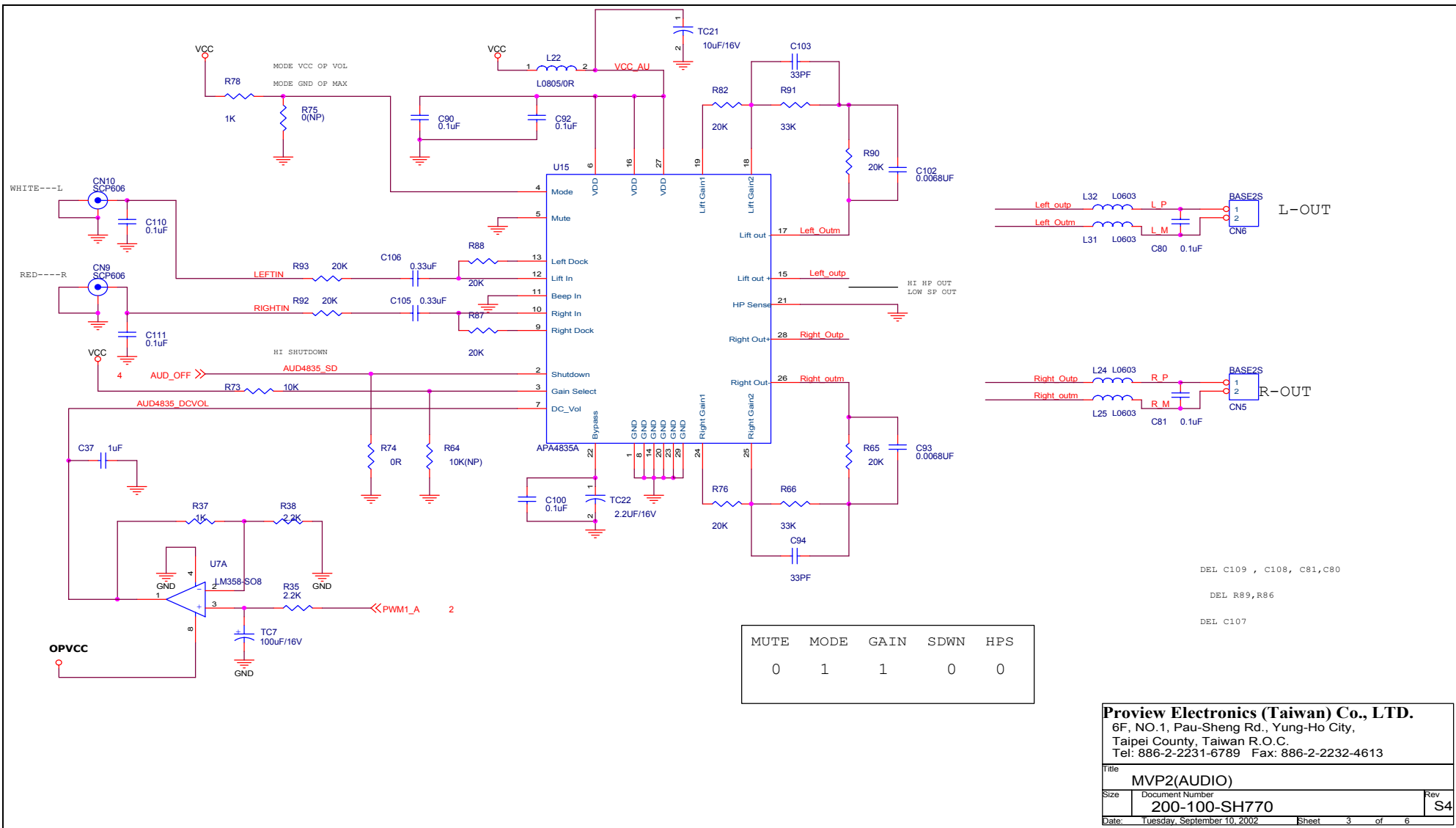
Title		MVP2(VGA)	
Size	Document Number	Rev	
	200-100-SH770	S4	
Date:	Tuesday, September 10, 2002	Sheet	1 of 6





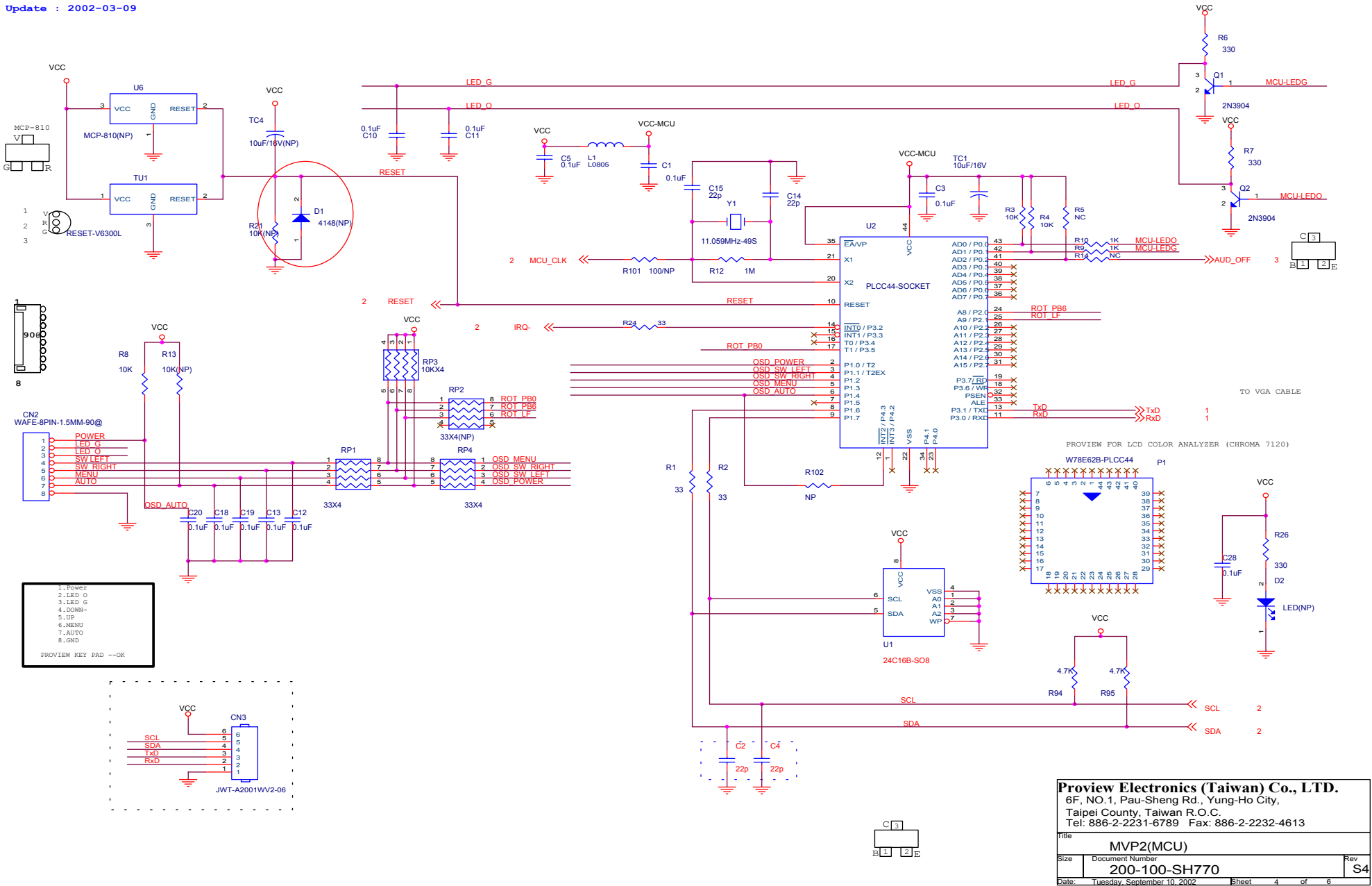
**Proview Electronics (Taiwan) Co., LTD.**  
 6F, NO.1, Pau-Sheng Rd., Yung-Ho City,  
 Taipei County, Taiwan R.O.C.  
 Tel: 886-2-2231-6789 Fax: 886-2-2232-4613

File		MVP2(SCALER)	
Size	Document Number	Rev	
	200-100-SH770	S4	
Date:	Tuesday, September 10, 2002	Sheet	2 of 6



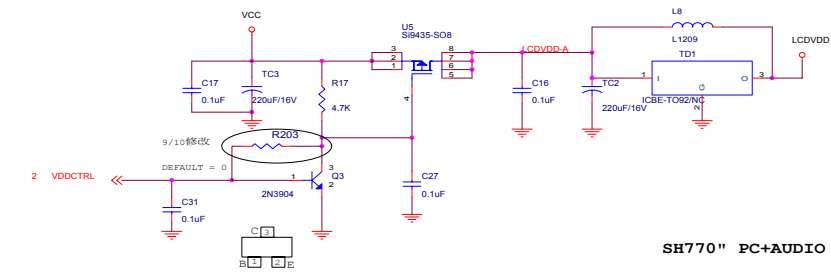
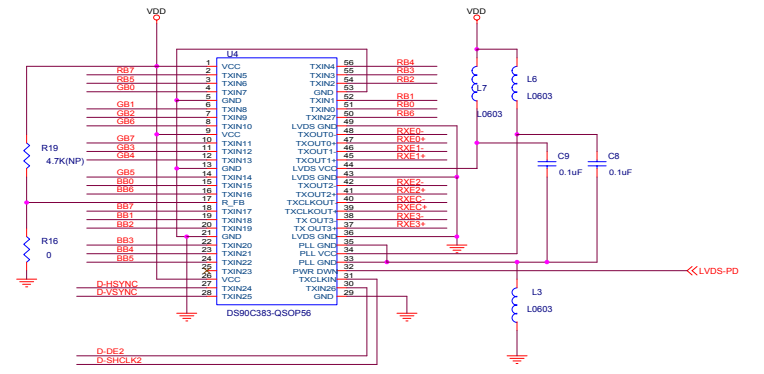
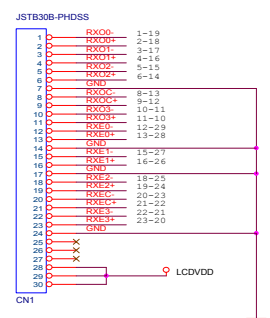
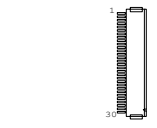
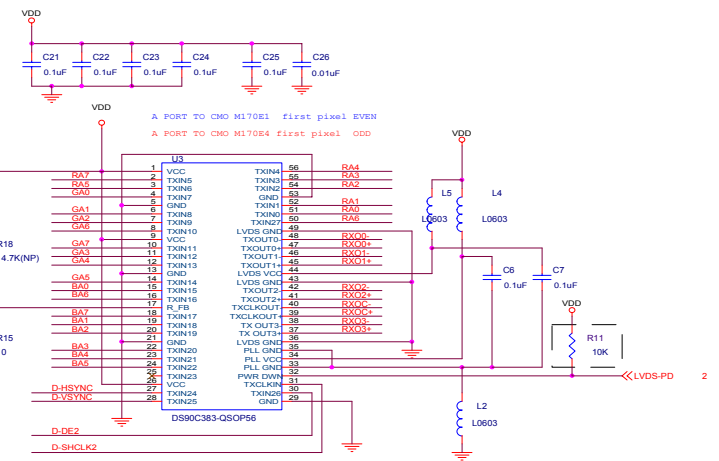
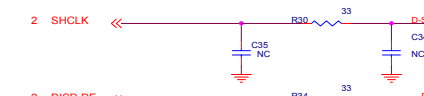
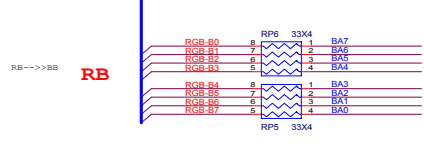
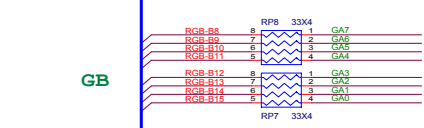
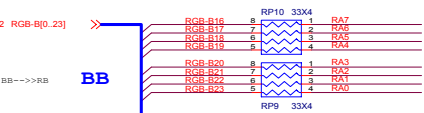
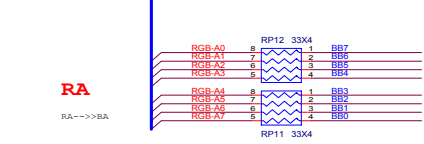
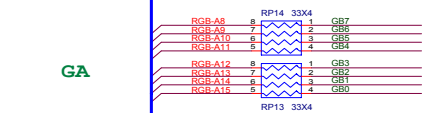
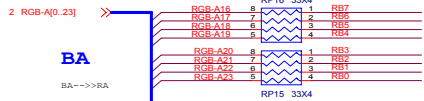
**Proview Electronics (Taiwan) Co., LTD.**  
 6F, NO.1, Pau-Sheng Rd., Yung-Ho City,  
 Taipei County, Taiwan R.O.C.  
 Tel: 886-2-2231-6789 Fax: 886-2-2232-4613

Title: MVP2(AUDIO)  
 Size: Document Number: 200-100-SH770 Rev: S4  
 Date: Tuesday, September 10, 2002 Sheet 3 of 6



**Proview Electronics (Taiwan) Co., LTD.**  
 6F, NO. 1, Pau-Sheng Rd., Yung-Ho City,  
 Taipei County, Taiwan R.O.C.  
 Tel: 886-2-2231-6789 Fax: 886-2-2232-4613

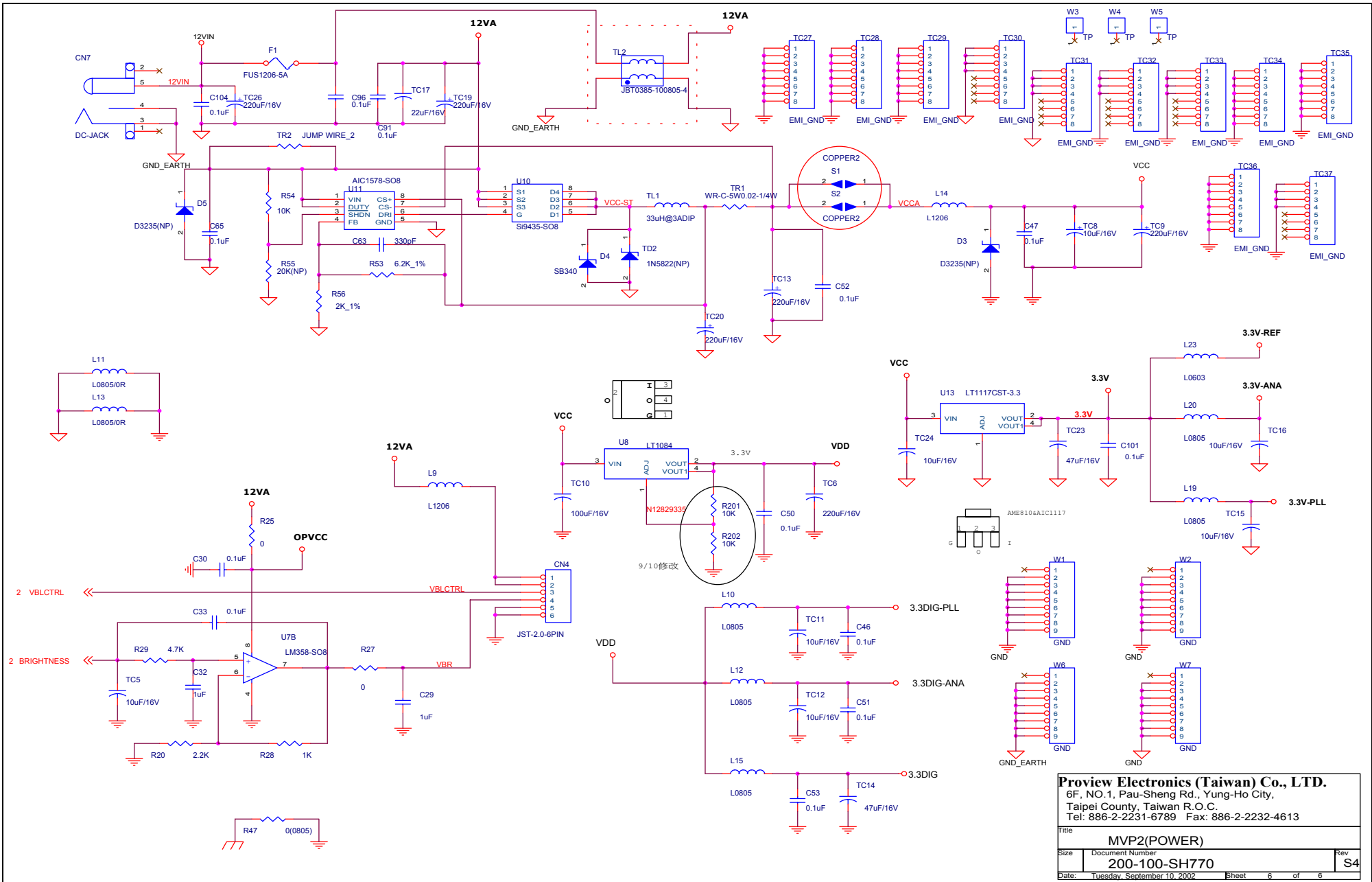
File		MVP2(MCU)	
Size	Document Number	Rev	
	200-100-SH770	S4	
Date:	Tuesday, September 10, 2002	Sheet	4 of 6



**Proview Electronics (Taiwan) Co., LTD.**  
 6F, NO.1, Pau-Sheng Rd., Yung-Ho City,  
 Taipei County, Taiwan R.O.C.  
 Tel: 886-2-2231-6789 Fax: 886-2-2232-4613

File	MVP2(OUTPUT)	
Size	Document Number	Sheet
	200-100-SH770	S4
Date	Tuesday, September 10, 2002	Sheet 5 of 6

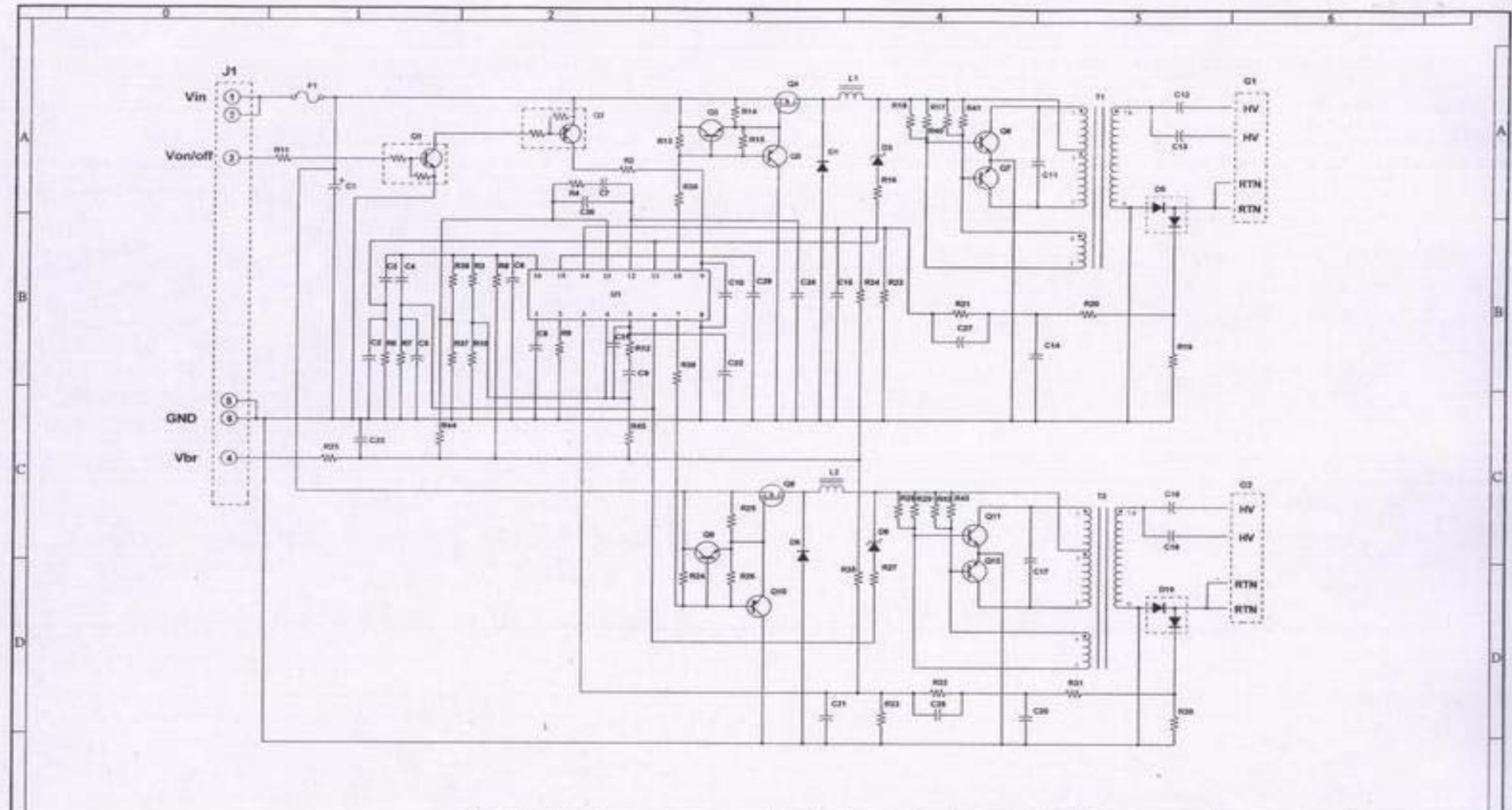
SH770" PC+AUDIO



**Proview Electronics (Taiwan) Co., LTD.**  
 6F, NO.1, Pau-Sheng Rd., Yung-Ho City,  
 Taipei County, Taiwan R.O.C.  
 Tel: 886-2-2231-6789 Fax: 886-2-2232-4613

Title: **MVP2(POWER)**

Size	Document Number	Rev
	<b>200-100-SH770</b>	<b>S4</b>
Date: Tuesday, September 10, 2002	Sheet 6	of 6



No.	圖號 - DRWG. No.	名稱 - NAME	數量 - QUANTITY	材質 - MATERIAL	處理 - TREATMENT	備註 - REMARK
設計 - DESIGN		KEV	日期 - DATE	6/18/01	名稱 - TITLE	電路圖
製圖 - DRAWING		LINDA	日期 - DATE	6/18/01	圖式 - MODELS	M074
檢核 - CHECKED			日期 - DATE	6/18/01	比例 - SCALE	1:1
承認 - APPVD			日期 - DATE	6/18/01	單位 - UNIT	mm
承認 - APPVD			日期 - DATE	6/18/01	圖號 - DRWG. No.	EELAM0740
					日期 - DATE	7/18/01
					頁 - PAGE	1/1

0 1 內容 - DESCRIPTION

聯華科技股份有限公司 MULTIPAL TECHNOLOGY CORP

EELAM0740

7/18/01 1/1

# Memu