

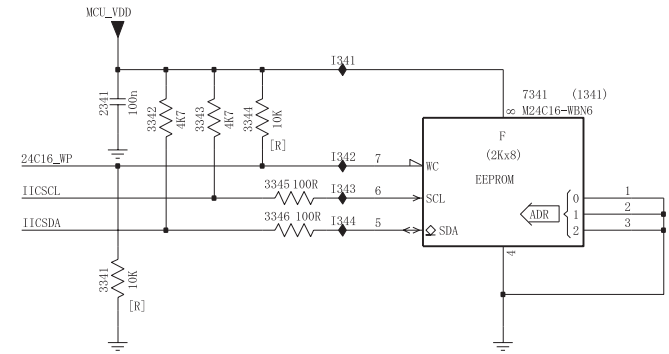
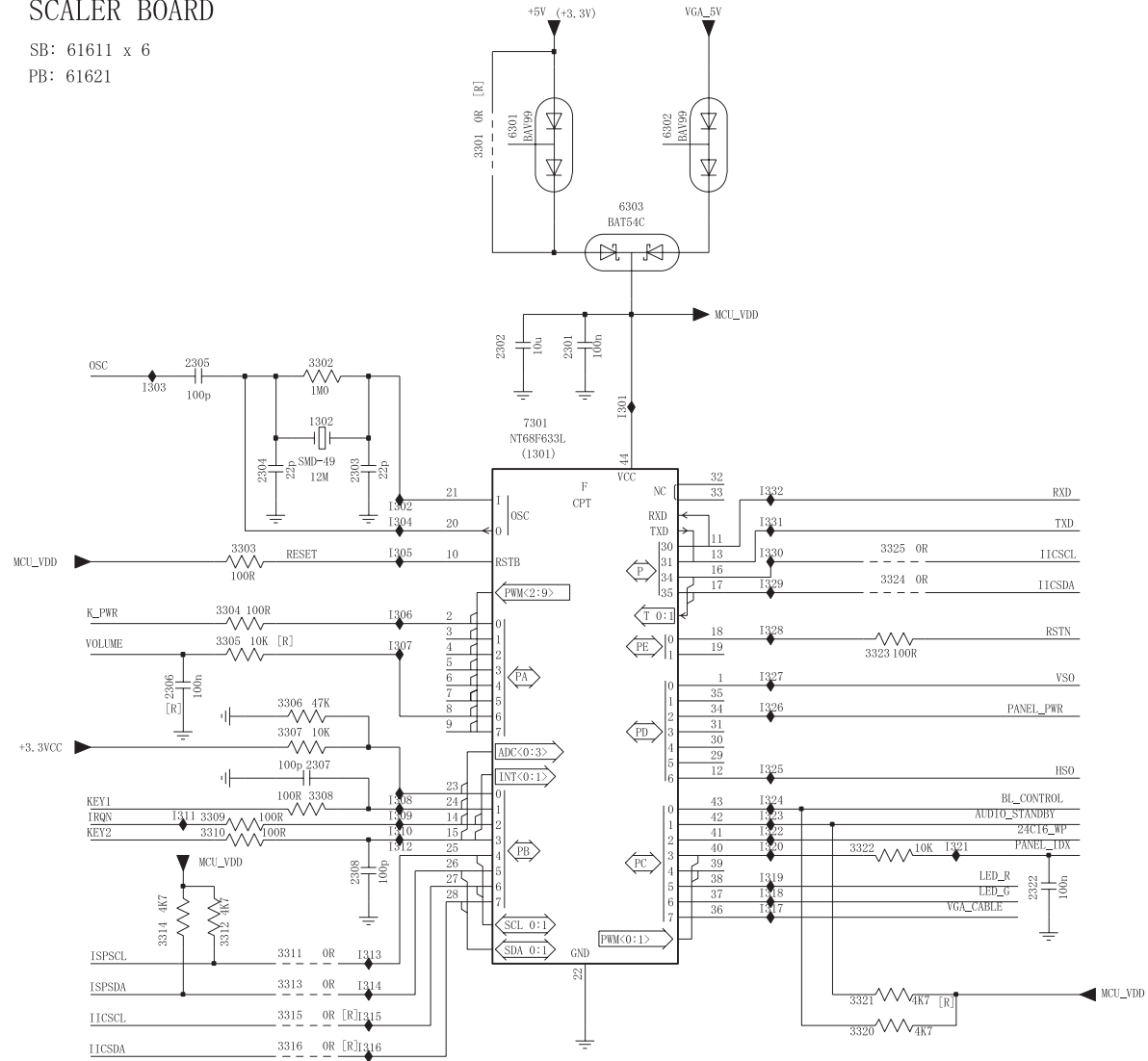
Scaler Schematic Diagram - 2

PHILIPS



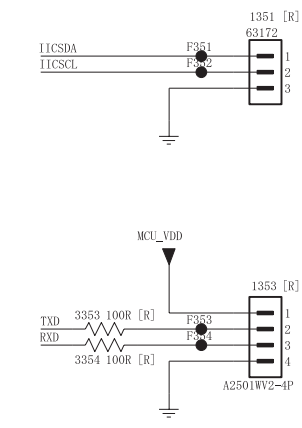
SCALER BOARD

SB: 61611 x 6
PB: 61621



Ref_Des	Reserved
1351	243803100116
	63172
1353	313816876941
	A2501WV2-4P
2306	223878615649
	100n
3301	232273091002
3305	212211805669
	10K
3315	232270296001
3316	232270296001
3321	232270260472
	4K7
3341	232270260103
	10K
3344	212211805669
	10K
3353	232270260101
	100R
3354	232270260101
	100R

ITEM	15"	17"/19"
3301	V	X
6301	X	



- 1302 C2
- 1351 C9
- 1353 D9
- 2301 B3
- 2302 B3
- 2303 C3
- 2304 C2
- 2305 B2
- 2306 D2
- 2307 D2
- 2308 E3
- 2322 E6
- 2341 A7
- 3301 A3
- 3302 B2
- 3303 C2
- 3304 D2
- 3305 D2
- 3306 D2
- 3307 D2
- 3308 D2
- 3309 D2
- 3310 E2
- 3311 E2
- 3312 E2
- 3313 E2
- 3314 E2
- 3315 E2
- 3316 F2
- 3320 E5
- 3321 E5
- 3322 E5
- 3323 D5
- 3324 C5
- 3325 C5
- 3341 B7
- 3342 A7
- 3343 A7
- 3344 A7
- 3345 B8
- 3346 B8
- 3353 D8
- 3354 D8
- 6301 A4
- 6302 A4
- 6303 B4
- 7301 C3
- 7341 A9
- F351 C9
- F352 C9
- F353 D9
- F354 D9
- I301 C4
- I302 C3
- I303 B2
- I304 C3
- I305 C3
- I306 D3
- I307 D3
- I308 D3
- I309 D3
- I310 E3
- I311 D2
- I312 E3
- I313 E3
- I314 E3
- I315 E3
- I316 F3
- I317 E4
- I318 E4
- I319 E4
- I320 E4
- I321 E5
- I322 E4
- I323 D4
- I324 D4
- I325 D4
- I326 D4
- I327 D4
- I328 D4
- I329 C4
- I330 C4
- I331 C4
- I332 A8
- I333 A8
- I334 B8
- I335 B8

All rights reserved. Reproduction in whole or in parts is prohibited without the written consent of the copyright owner.

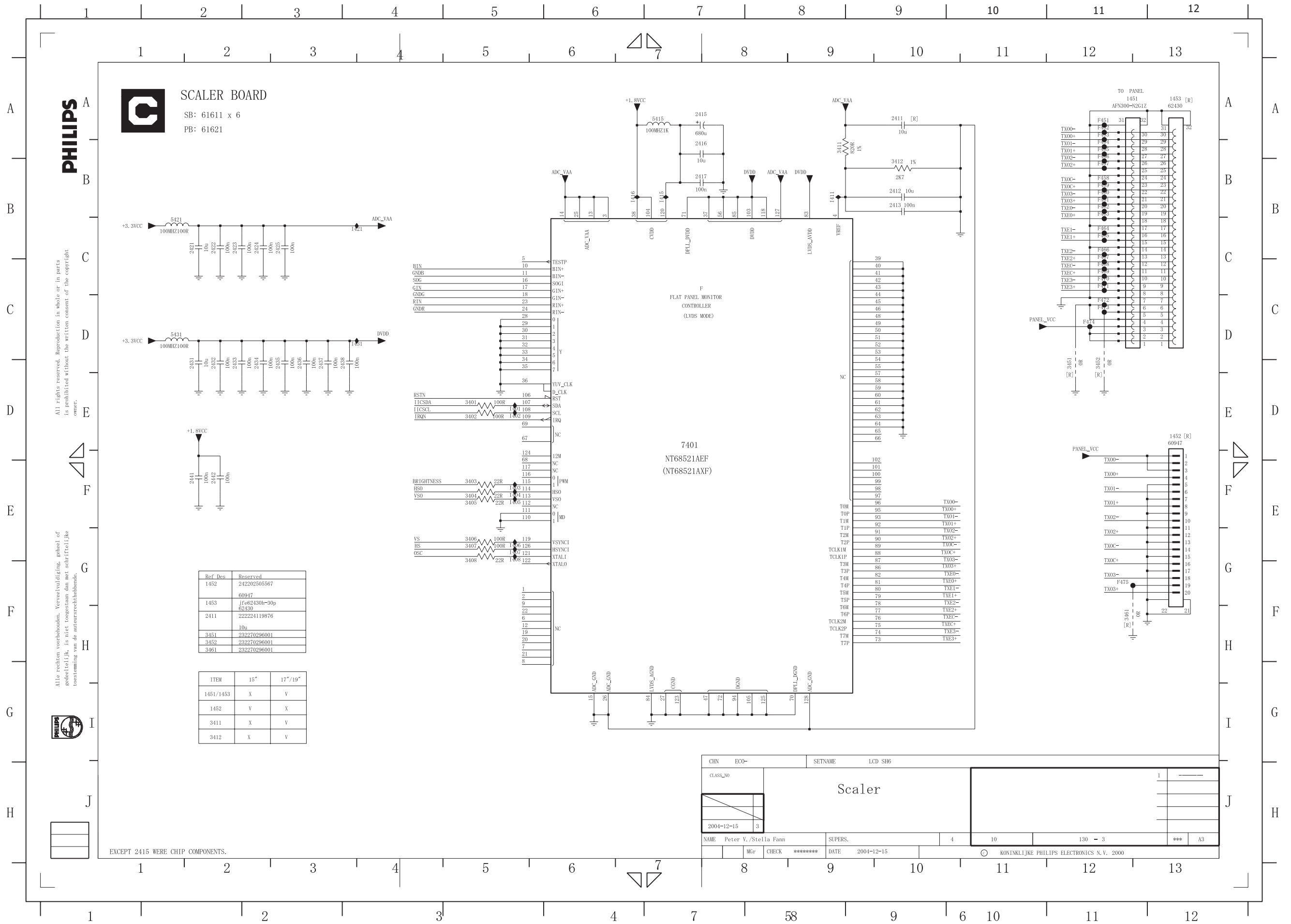
Alle rechten voorbehouden. Vervolmaking, geheel of gedeeltelijk, is niet toegestaan dan met schriftelijke toestemming van de auteursrechtbehoudende.

EXCEPT 1351, 1353 WERE CHIP COMPONENTS.

CHN	ECO-	SETNAME	LCD SH6
CLASS_NO			
		MICRO	
2004-12-15	3		
NAME	Peter V./Stella Fann	SUPERS.	
MGr	CHECK	*****	DATE 2004-12-15
			10
			130 -

			A3

Scaler Schematic Diagram - 3



- 1451 A11
- 1452 D12
- 1453 A12
- 2411 A9
- 2412 B9
- 2413 B9
- 2415 A7
- 2416 A7
- 2417 B7
- 2421 B2
- 2422 B2
- 2423 B2
- 2424 B3
- 2425 B3
- 2431 D2
- 2432 D2
- 2433 D2
- 2434 D3
- 2435 D3
- 2436 D3
- 2437 D3
- 2438 D4
- 2441 E2
- 2442 E2
- 3401 D5
- 3402 D5
- 3403 E5
- 3404 E5
- 3405 E5
- 3406 E5
- 3407 E5
- 3408 F5
- 3411 A8
- 3412 B9
- 3451 D11
- 3452 D11
- 3461 F11
- 5415 A7
- 5421 B2
- 5431 C2
- 7401 D7
- F451 A11
- F452 A11
- F453 A11
- F454 A11
- F455 A11
- F456 B11
- F457 B11
- F458 B11
- F459 B11
- F460 B11
- F461 B11
- F462 B11
- F463 B11
- F464 B11
- F465 B11
- F466 B11
- F467 C11
- F468 C11
- F469 C11
- F470 C11
- F471 C11
- F472 C11
- F473 C11
- F474 C11
- F475 F11
- 1401 D5
- 1402 D5
- 1403 E5
- 1404 E5
- 1405 E5
- 1406 E5
- 1407 E5
- 1408 E5
- 1411 B8
- 1415 B7
- 1416 B6
- 1421 B4
- 1431 C4

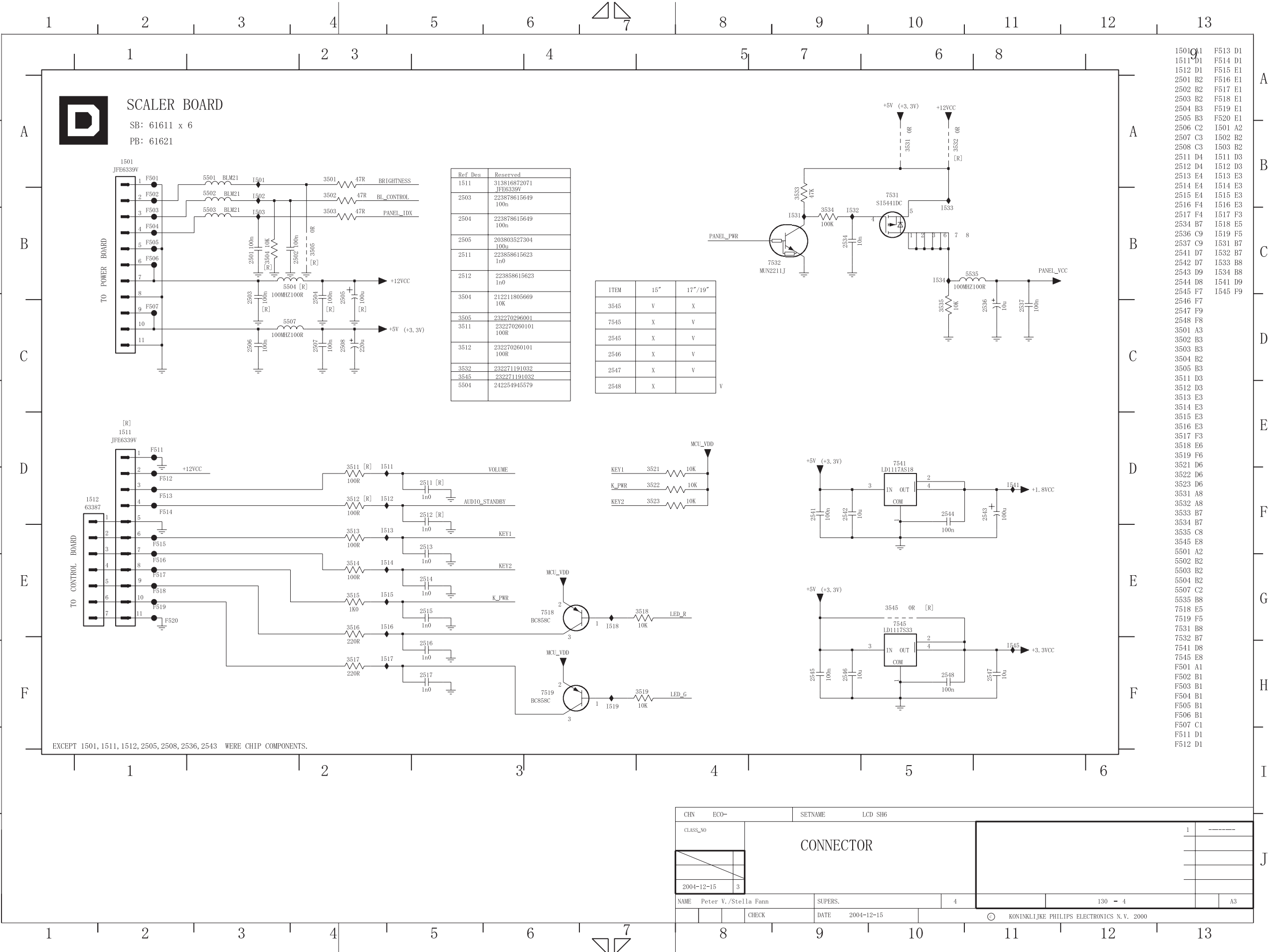
CHN	ECO-	SETNAME	LCD SH6
CLASS_20		Scaler	
2004-12-15	3		
NAME	Peter V./Stella Fann	SUPERS.	4
Mgr	CHECK *****	DATE	2004-12-15
			10
			130 - 3
			*** A3
KONINKLIJKE PHILIPS ELECTRONICS N.V. 2000			

Scaler Schematic Diagram - 4

PHILIPS

All rights reserved. Reproduction in whole or in parts is prohibited without the written consent of the copyright owner.

Alle rechten voorbehouden. Verveelvuldiging, geheel of gedeeltelijk, is niet toegestaan dan met schriftelijke toestemming van de auteursrechtbehouder.



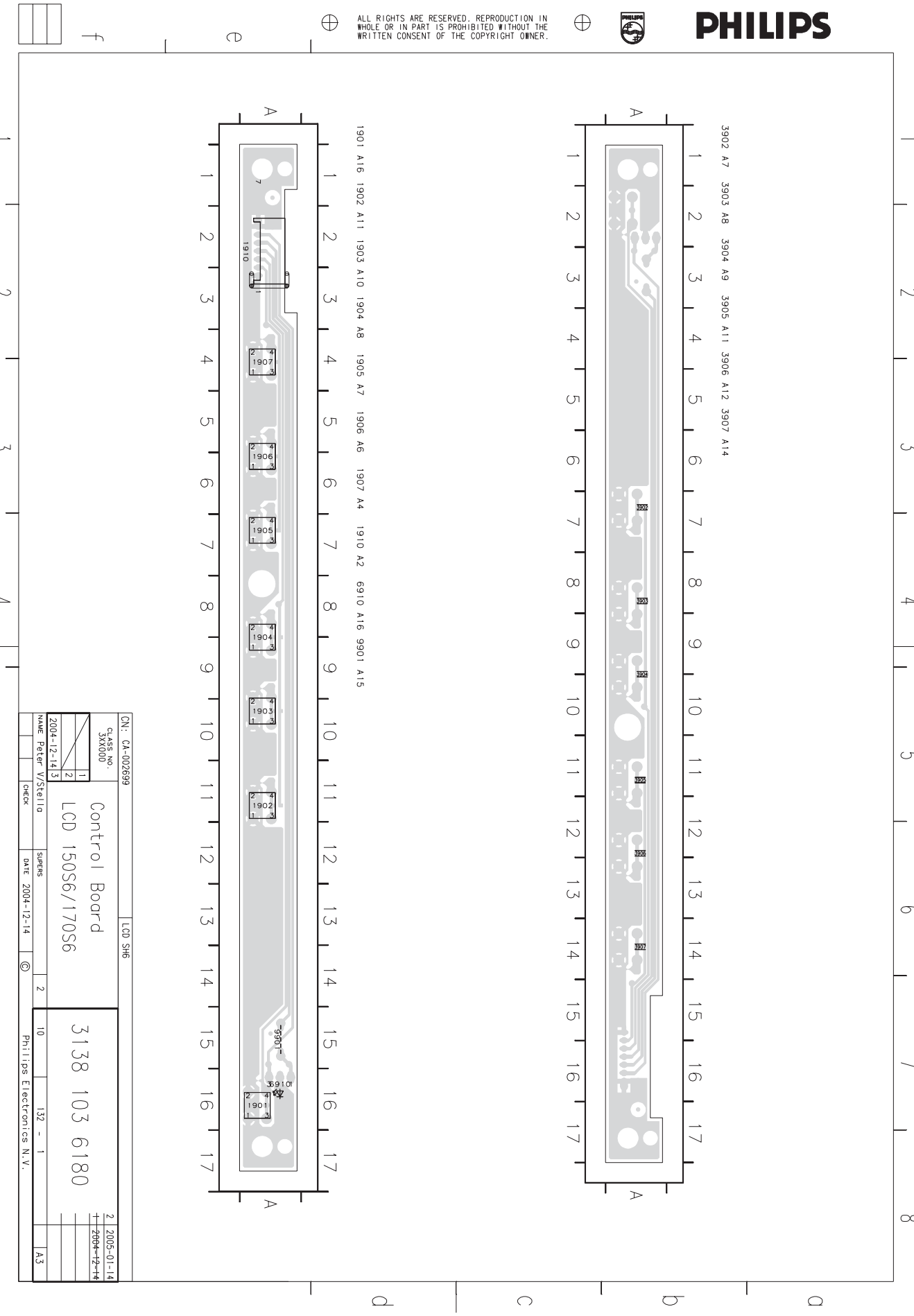
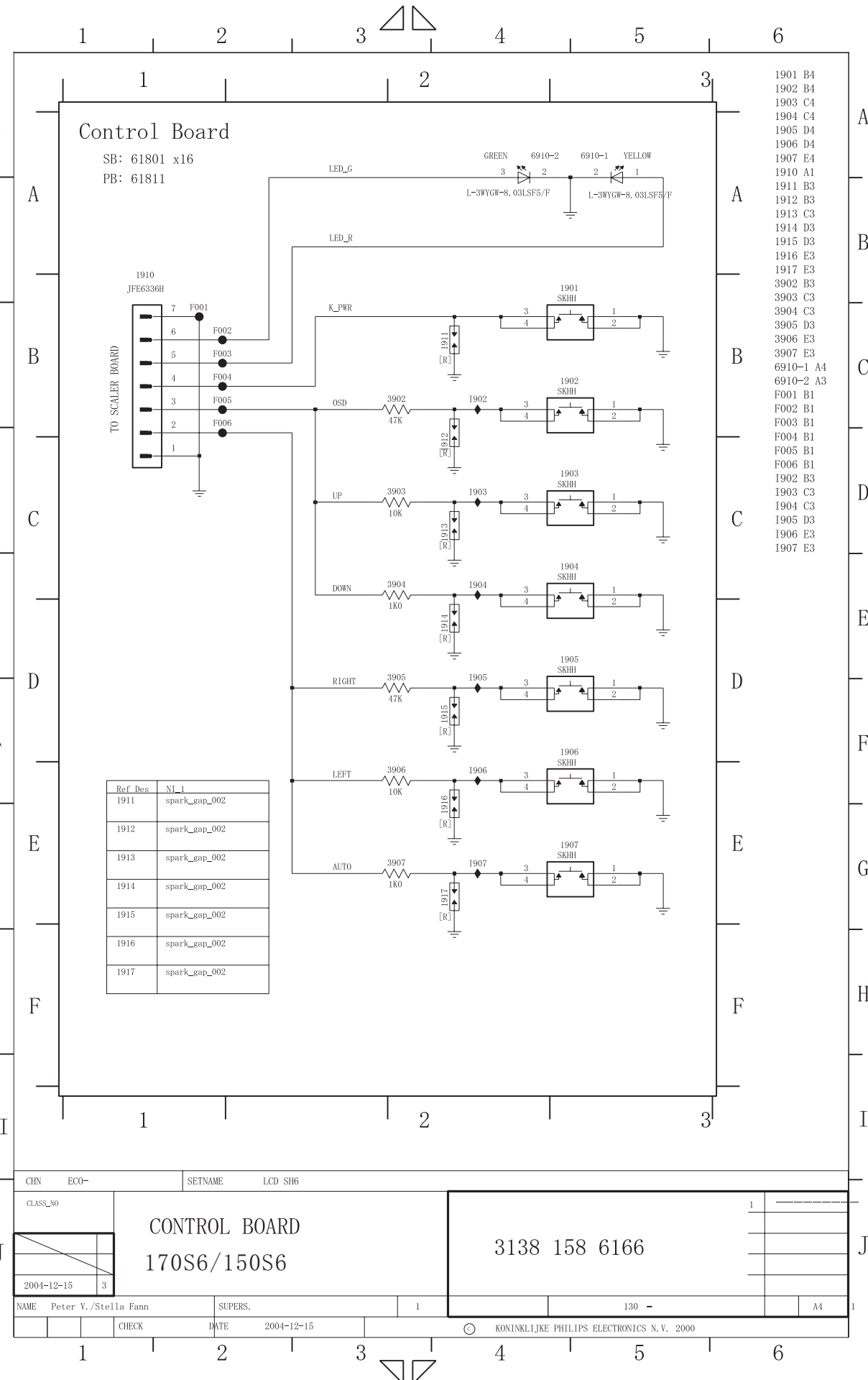
- 1501 D1 F513 D1
- 1511 D1 F514 D1
- 1512 D1 F515 E1
- 2501 B2 F516 E1
- 2502 B2 F517 E1
- 2503 B2 F518 E1
- 2504 B3 F519 E1
- 2505 B3 F520 E1
- 2506 C2 1501 A2
- 2507 C3 1502 B2
- 2508 C3 1503 B2
- 2511 D4 1511 D3
- 2512 D4 1512 D3
- 2513 E4 1513 E3
- 2514 E4 1514 E3
- 2515 E4 1515 E3
- 2516 F4 1516 E3
- 2517 F4 1517 F3
- 2534 B7 1518 E5
- 2536 C9 1519 F5
- 2537 C9 1531 B7
- 2541 D7 1532 B7
- 2542 D7 1533 B8
- 2543 D9 1534 B8
- 2544 D8 1541 D9
- 2545 F7 1545 F9
- 2546 F7
- 2547 F9
- 2548 F8
- 3501 A3
- 3502 B3
- 3503 B3
- 3504 B2
- 3505 B3
- 3511 D3
- 3512 D3
- 3513 E3
- 3514 E3
- 3515 E3
- 3516 E3
- 3517 F3
- 3518 E6
- 3519 F6
- 3521 D6
- 3522 D6
- 3523 D6
- 3531 A8
- 3532 A8
- 3533 B7
- 3534 B7
- 3535 C8
- 3545 E8
- 5501 A2
- 5502 B2
- 5503 B2
- 5504 B2
- 5507 C2
- 5535 B8
- 7518 E5
- 7519 F5
- 7531 B8
- 7532 B7
- 7541 D8
- 7545 E8
- F501 A1
- F502 B1
- F503 B1
- F504 B1
- F505 B1
- F506 B1
- F507 C1
- F511 D1
- F512 D1

Control Board Schematic Diagram and C.B.A - 150S6/170S6



All rights reserved. Reproduction in whole or in parts is prohibited without the written consent of the copyright owner.

Alle rechten voorbehouden. Vervolgvuldiging, geheel of gedeeltelijk, is niet toegestaan dan met schriftelijke toestemming van de auteursrechtbehouder.

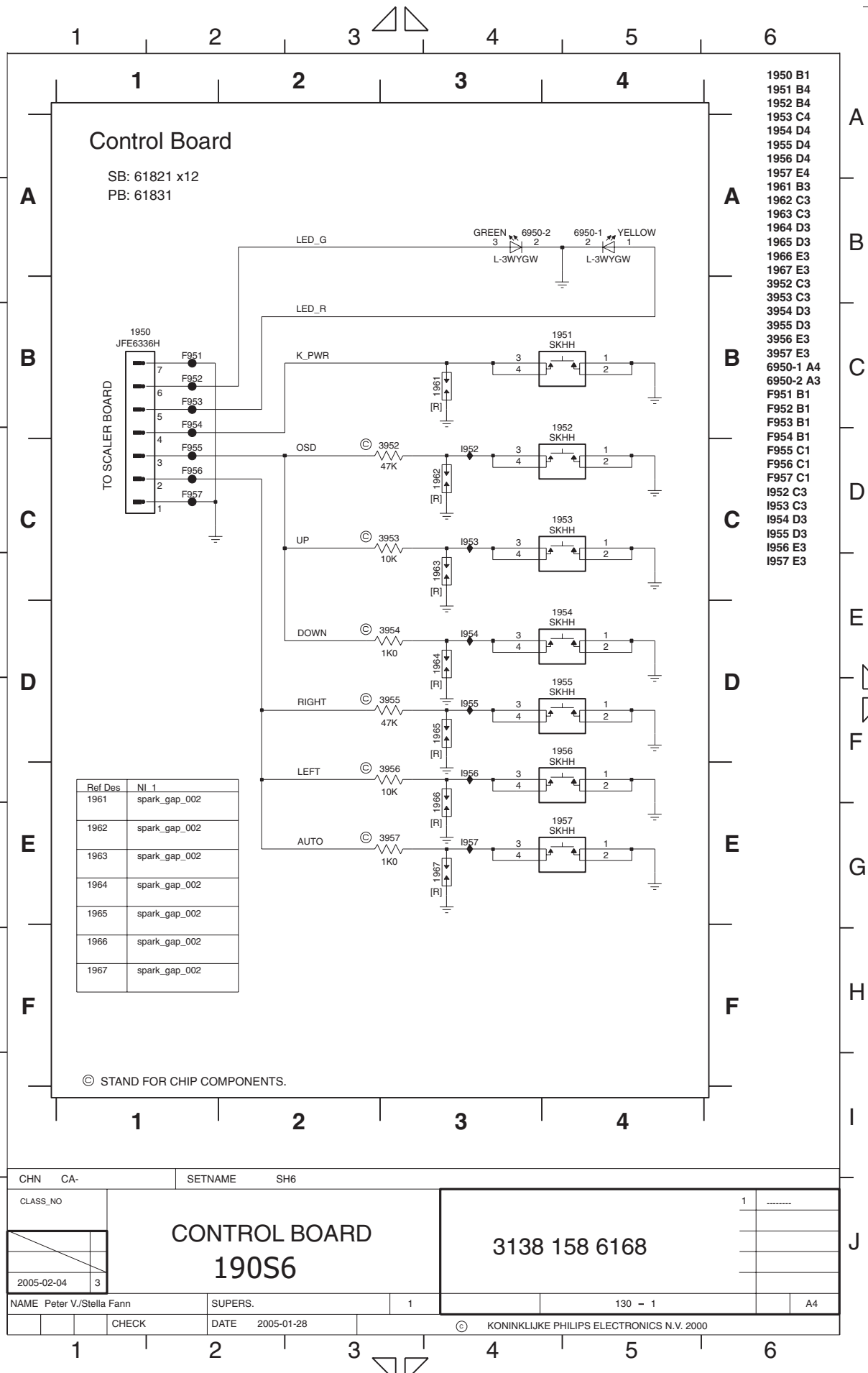


Control Board Schematic Diagram and C.B.A - 190S6

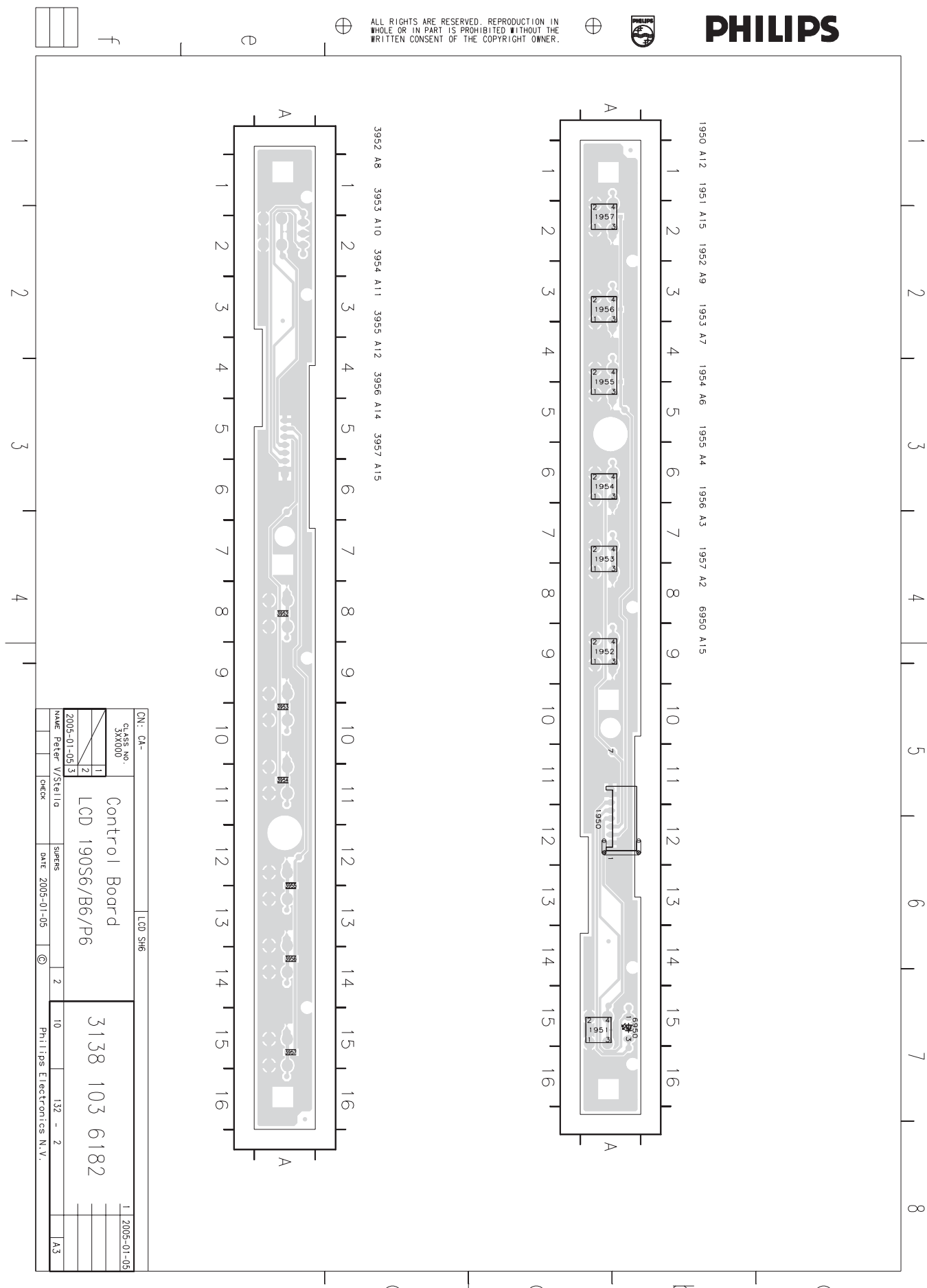
PHILIPS

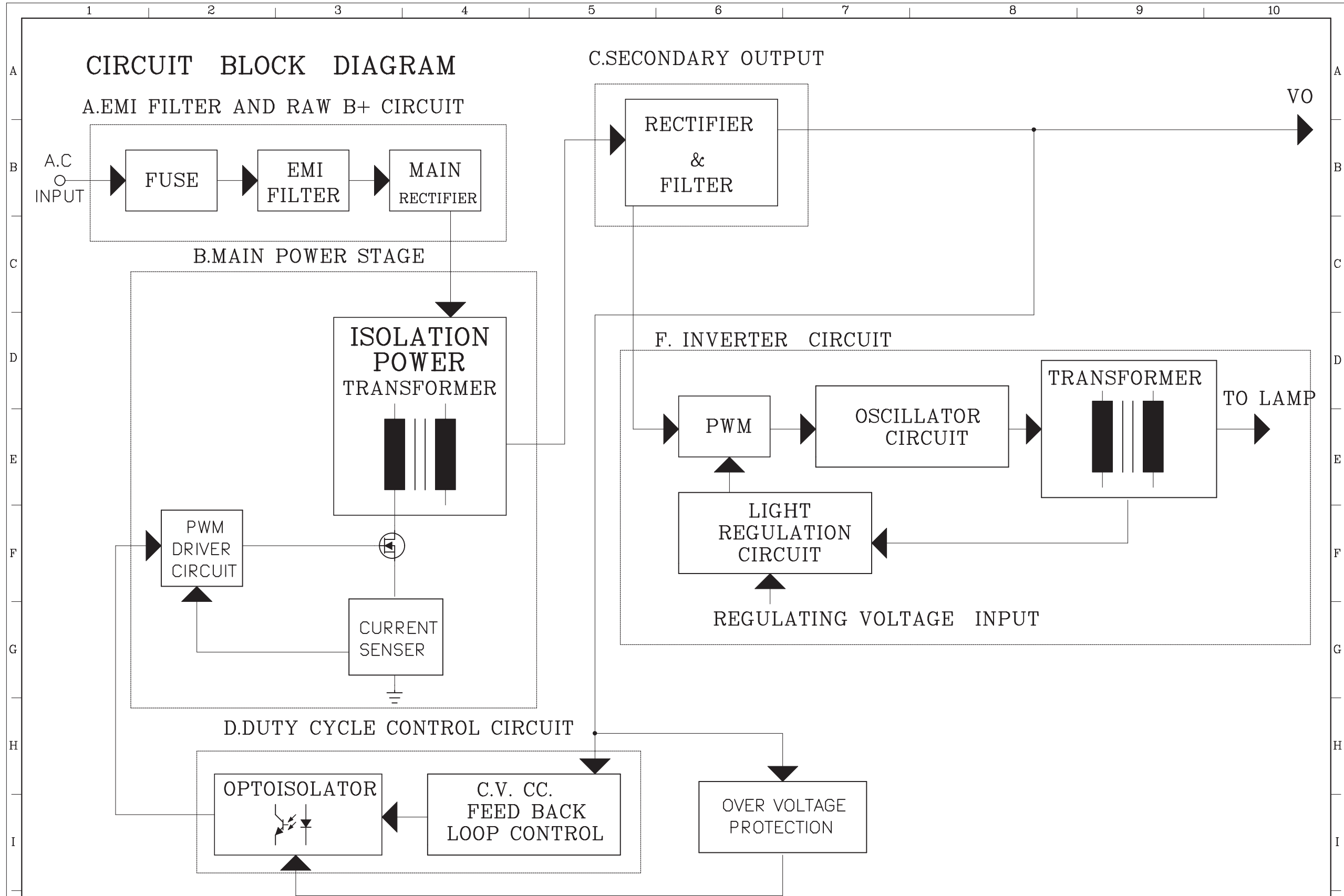
All rights reserved. Reproduction in whole or in part is prohibited without the written consent of the copyright owner.

Alle rechten voorbehouden. Vervolmelding, geheel of gedeeltelijk, is niet toegestaan dan met schriftelijke toestemming van de auteursrechtbehebende.



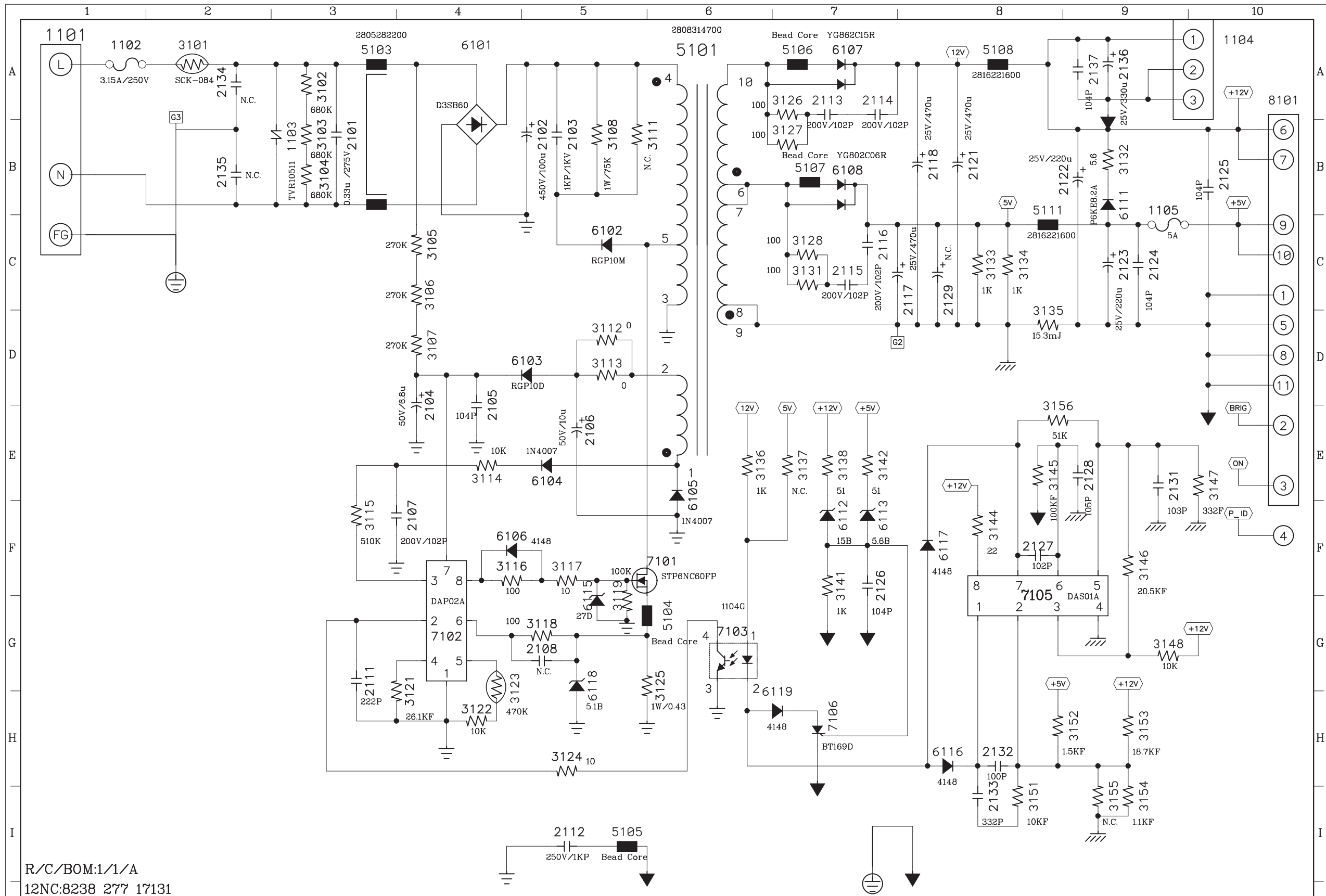
CHN CA-	SETNAME SH6		
CLASS_NO	CONTROL BOARD		1
2005-02-04	190S6		
NAME Peter V./Stella Fann	SUPERS.	130 - 1	A4
CHECK	DATE 2005-01-28	© KONINKLIJKE PHILIPS ELECTRONICS N.V. 2000	





<p>THESE DRAWINGS AND SPECIFICATIONS ARE THE PROPERTY OF DELTA ELECTRONICS, INC. AND SHALL NOT BE REPRODUCED OR USED AS THE BASIS FOR THE MANUFACTURE OR SELL OF APPARATUSES OR DEVICES WITHOUT PERMISSION.</p>	Date: 12/21/04	LY.REV.(R/C) 1/0	Drawn: MAY	Checked	Approved	PART NO.	REV.	SHEET
	PWB: EADP-43AF A 2941012401	FILE NAME: BD-43AF A		\$%&	!"#	EADP-43AF A		01 TO END
	DESCRIPTION: SCHEMATIC OF AC --> DC ADAPTOR			12/21/04	12/21/04			

Power Board Schematic Diagram (170S6/190S6) - Delta



R/C/BOM:1/1/A
 12NC:8238 277 17131

DELTA DELTA ELECTRONICS, INC.
 THESE DRAWINGS AND SPECIFICATIONS ARE THE PROPERTY OF DELTA ELECTRONICS, INC AND SHALL NOT BE REPRODUCED OR USED AS THE BASIS FOR THE MANUFACTURE OR SELL OF APPARATUSES OR DEVICES WITHOUT PERMISSON.

Date: 12/08/04
 LY.REV.(R/C) 1/0 Drawn: MAY
 PWB:EADP-43AF A 2941012401
 FILE NAME: SC-E43AF A
 DESCRIPTION:SCHEMATIC OF AC --> DC ADAPTOR

Checked
 鄭宇凱
 12/08/04

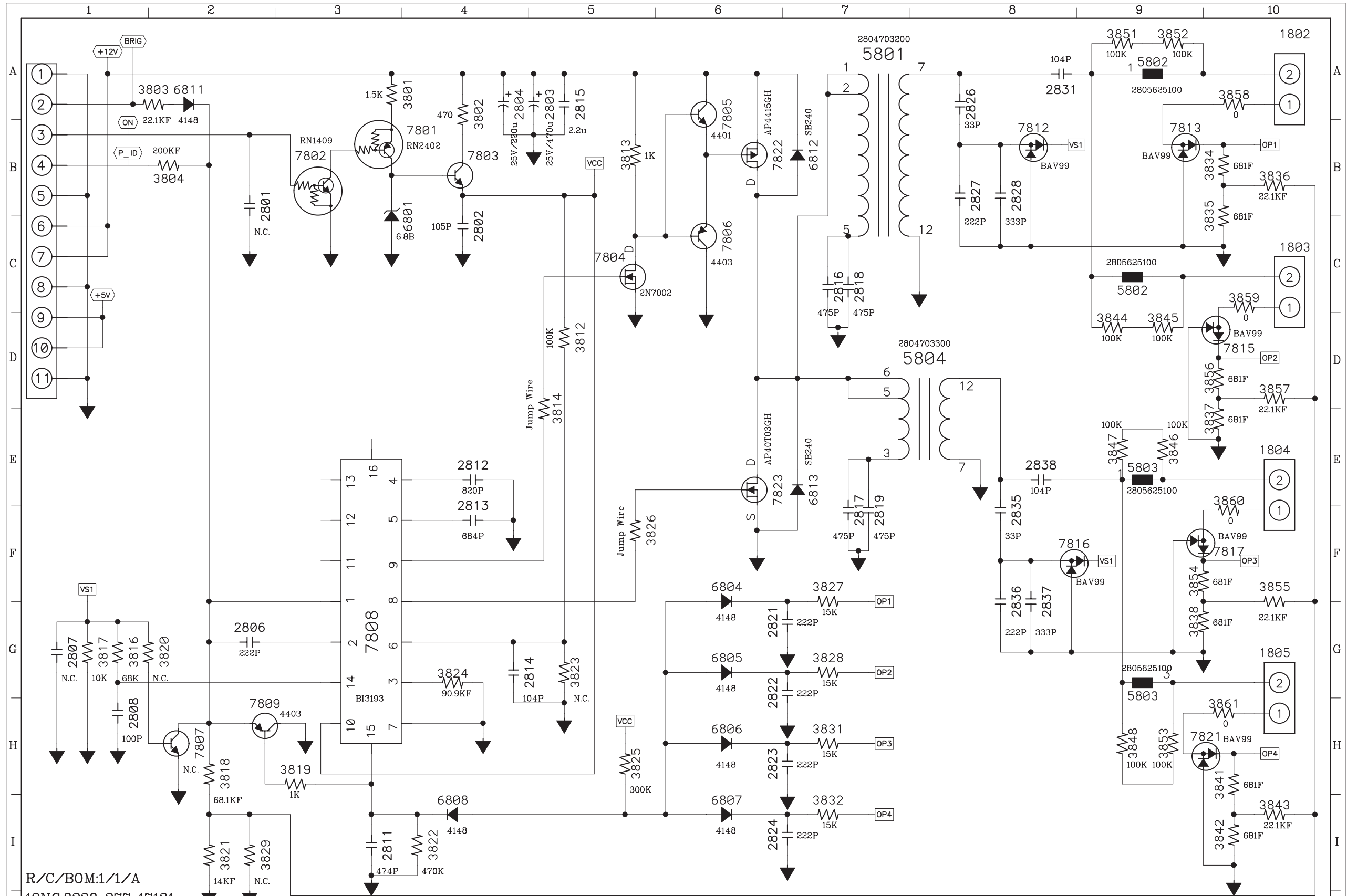
Approved
 江碩桓
 12/08/04

PART NO.
 EADP-43AF A

REV.
 S00

SHEET
 01 OF 02

Power Board Schematic Diagram (170S6/190S6) - Delta



R/C/BOM:1/1/A
12NC:8238 277 17131



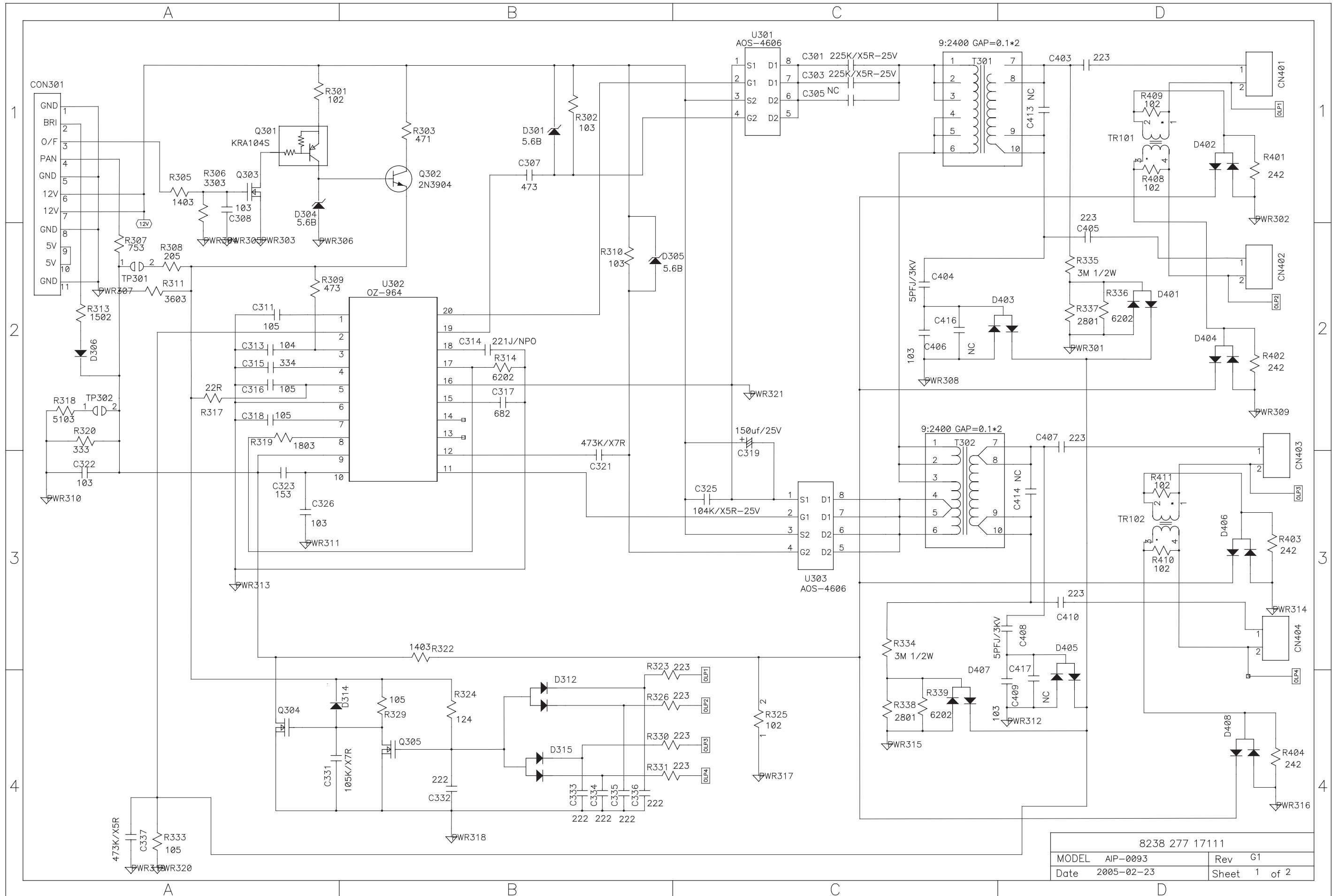
THESE DRAWINGS AND SPECIFICATIONS ARE THE PROPERTY OF DELTA ELECTRONICS, INC AND SHALL NOT BE REPRODUCED OR USED AS THE BASIS FOR THE MANUFACTURE OR SELL OF APPARATUSES OR DEVICES WITHOUT PERMISSON.

Date: 12/08/04
LY.REV.(R/C) 1/0
Drawn: MAY
Checked
Approved
PART NO.
REV.
SHEET

鄭宇凱
江碩桓
12/08/04
12/08/04

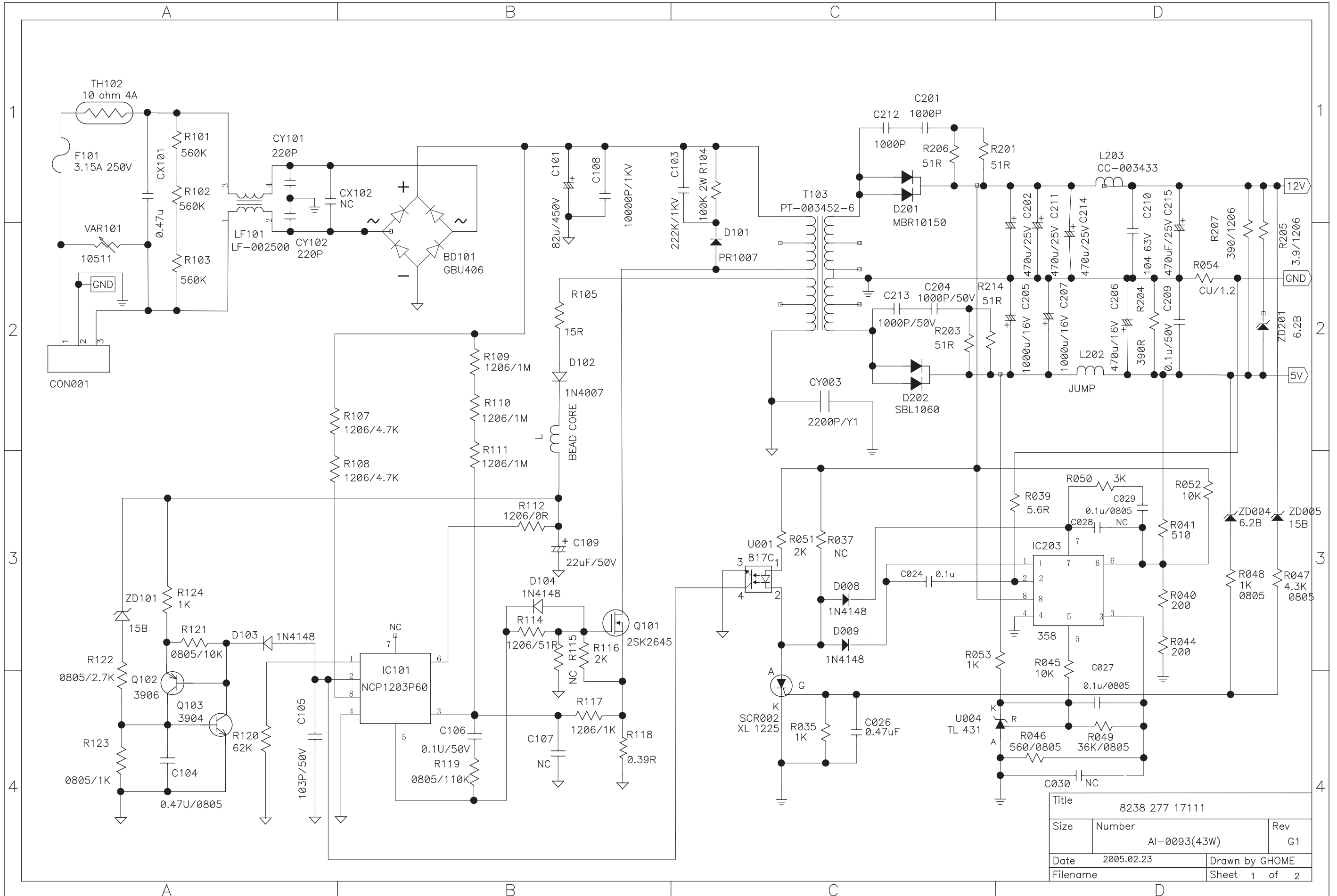
DESCRIPTION:SCHEMATIC OF
AC --> DC ADAPTOR
EADP-43AF A
S00
02 OF 02

Power Schematic Diagram (170S6/190S6) - Lien Chang



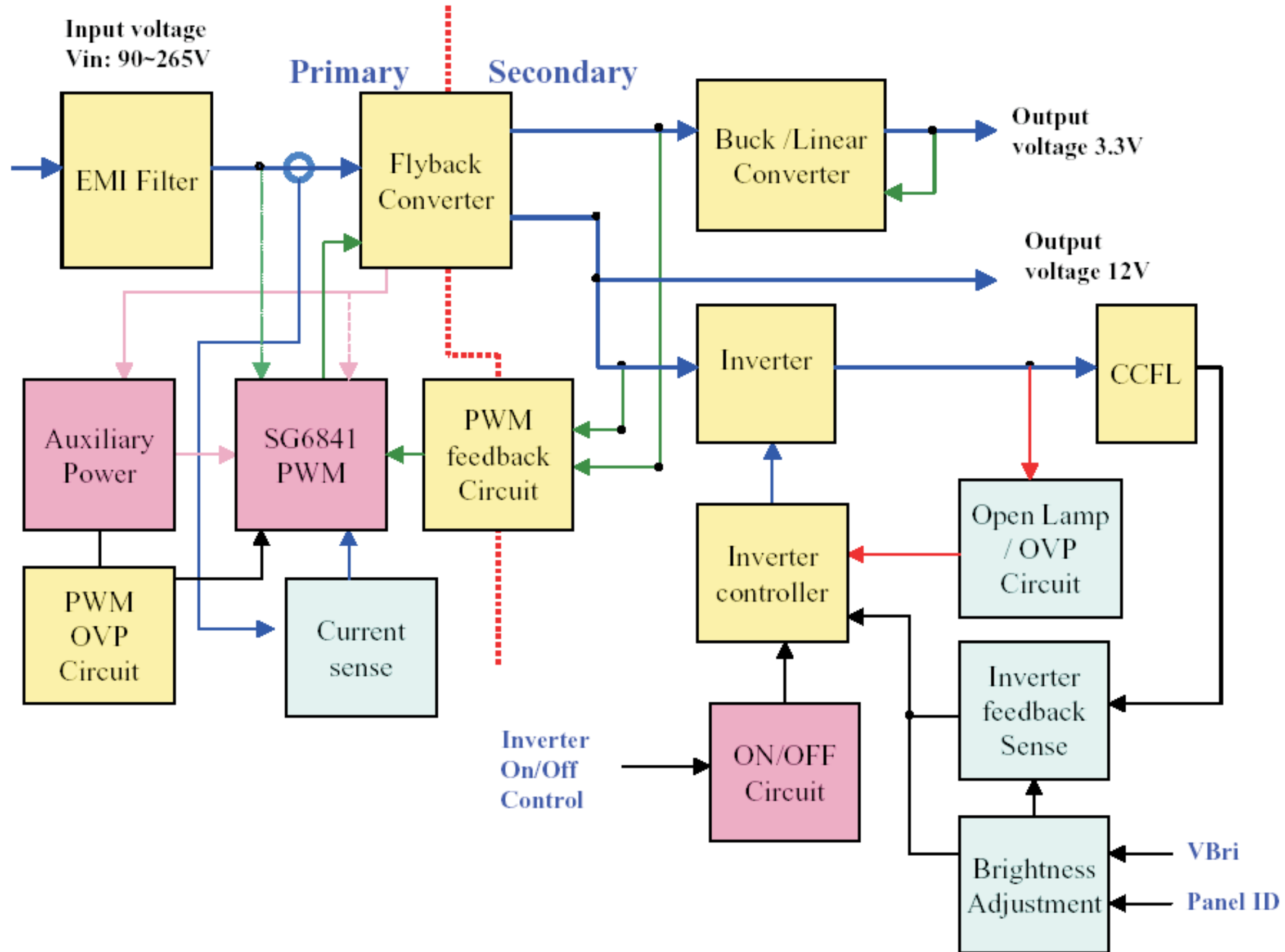
8238 277 17111			
MODEL	AIP-0093	Rev	G1
Date	2005-02-23	Sheet	1 of 2

Power Schematic Diagram (170S6/190S6) - Lien Chang

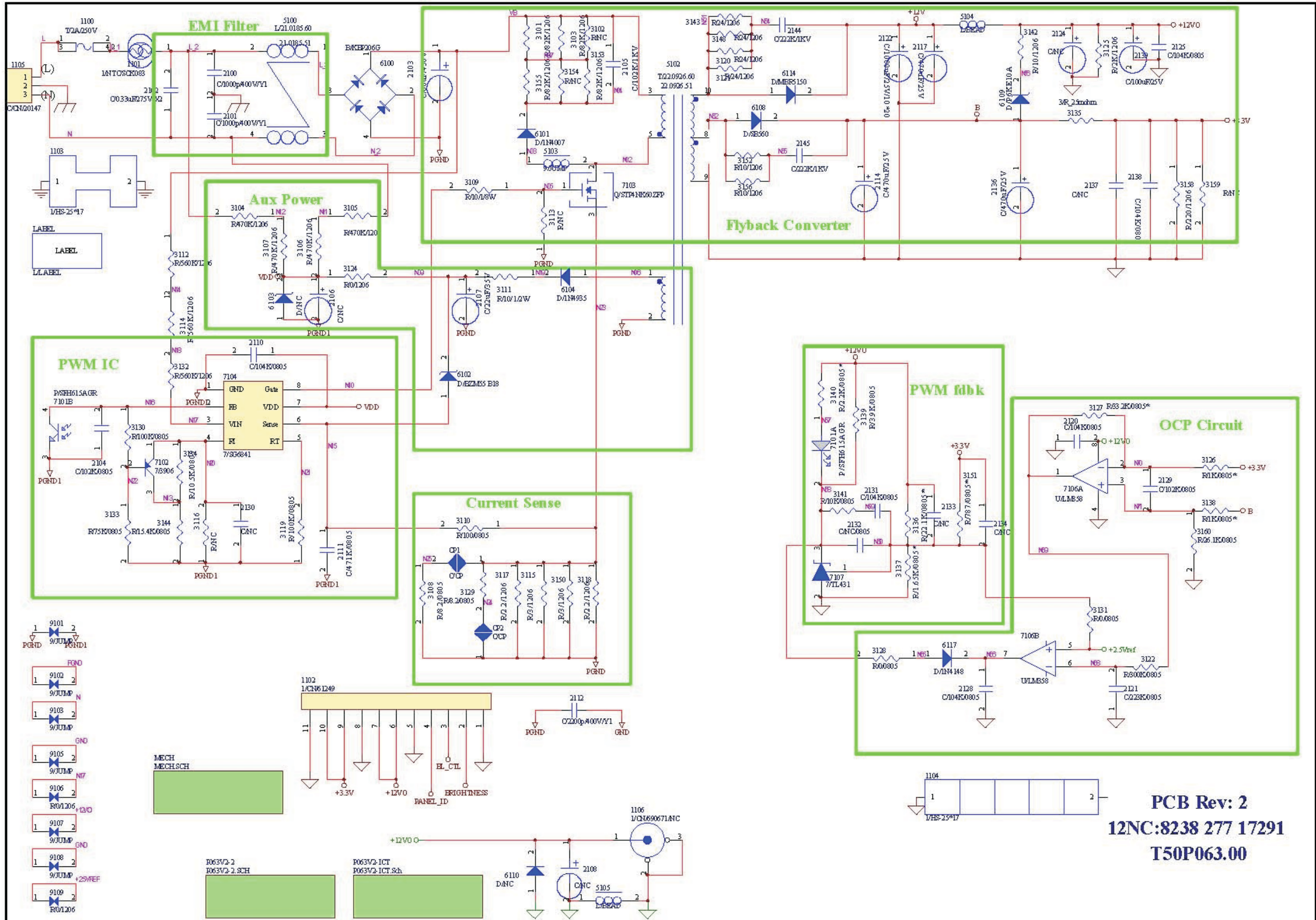


Title			8238 277 17111		
Size	Number	Rev		G1	
			AI-0093(43W)		
Date	2005.02.23		Drawn by GHOME		
Filename			Sheet 1 of 2		

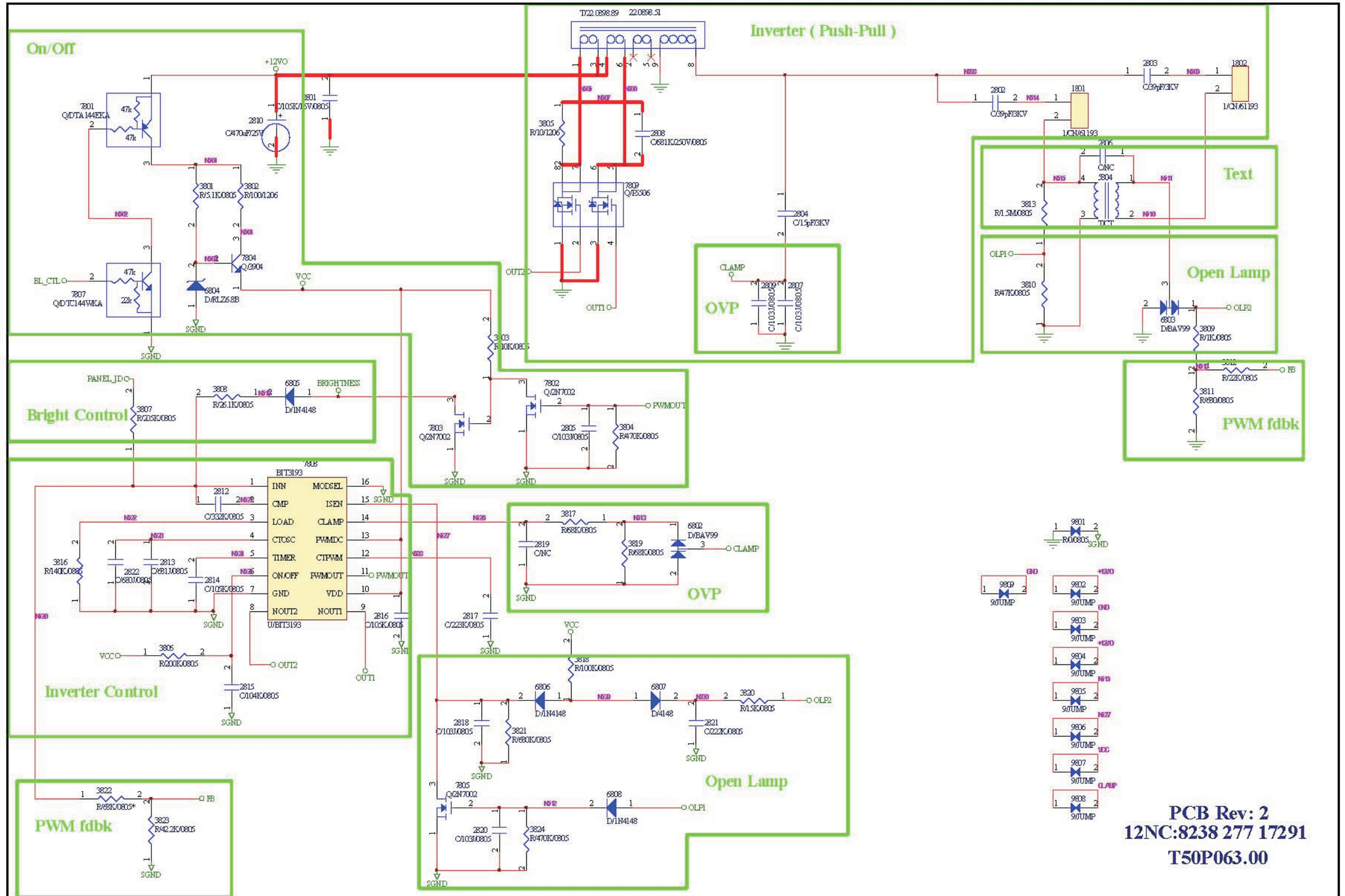
150S6 LIPS Block Diagram_Foxconn



AC/DC Function Block Schematic(Foxconn)

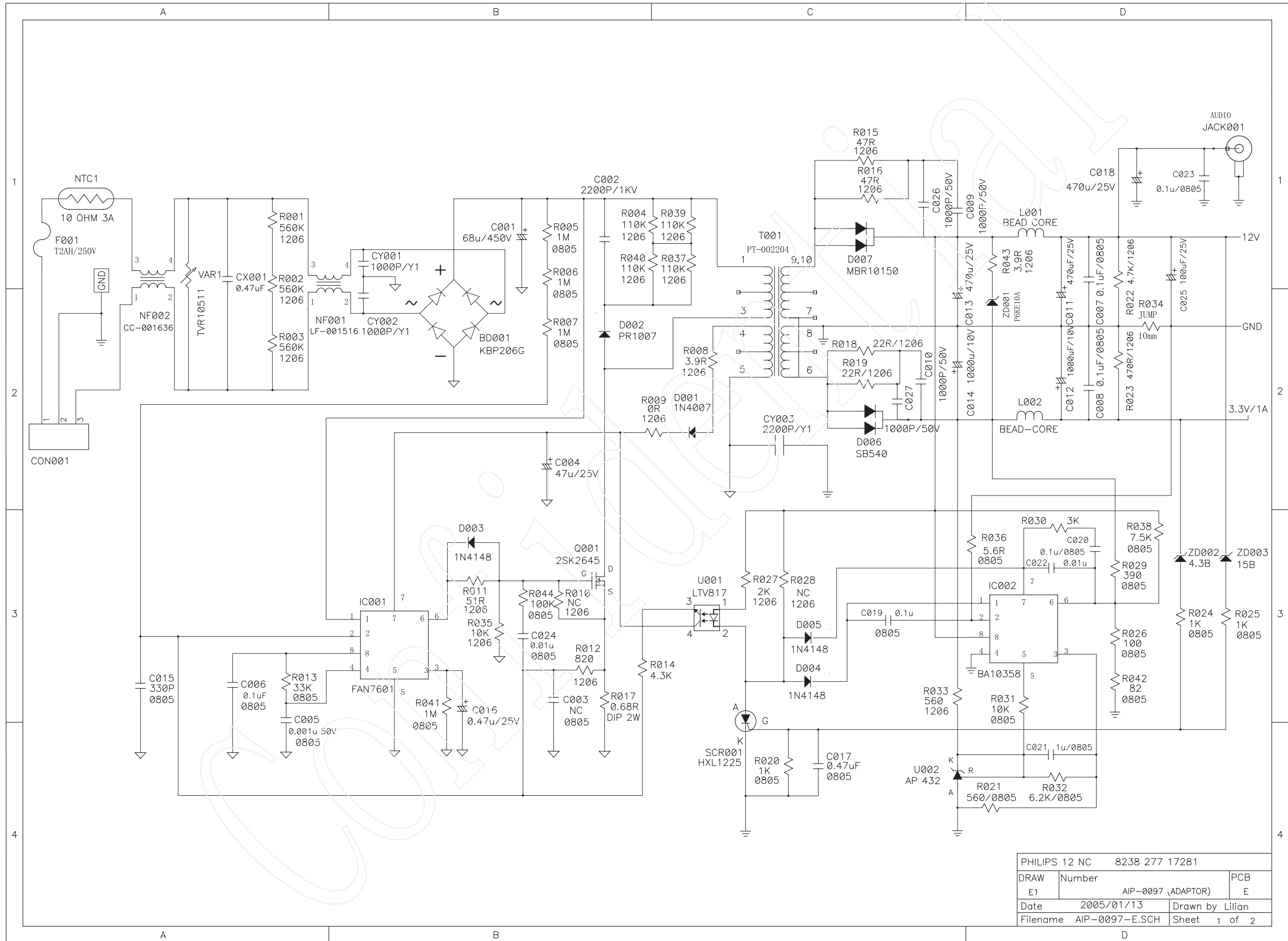


Inverter Function Block Schematic



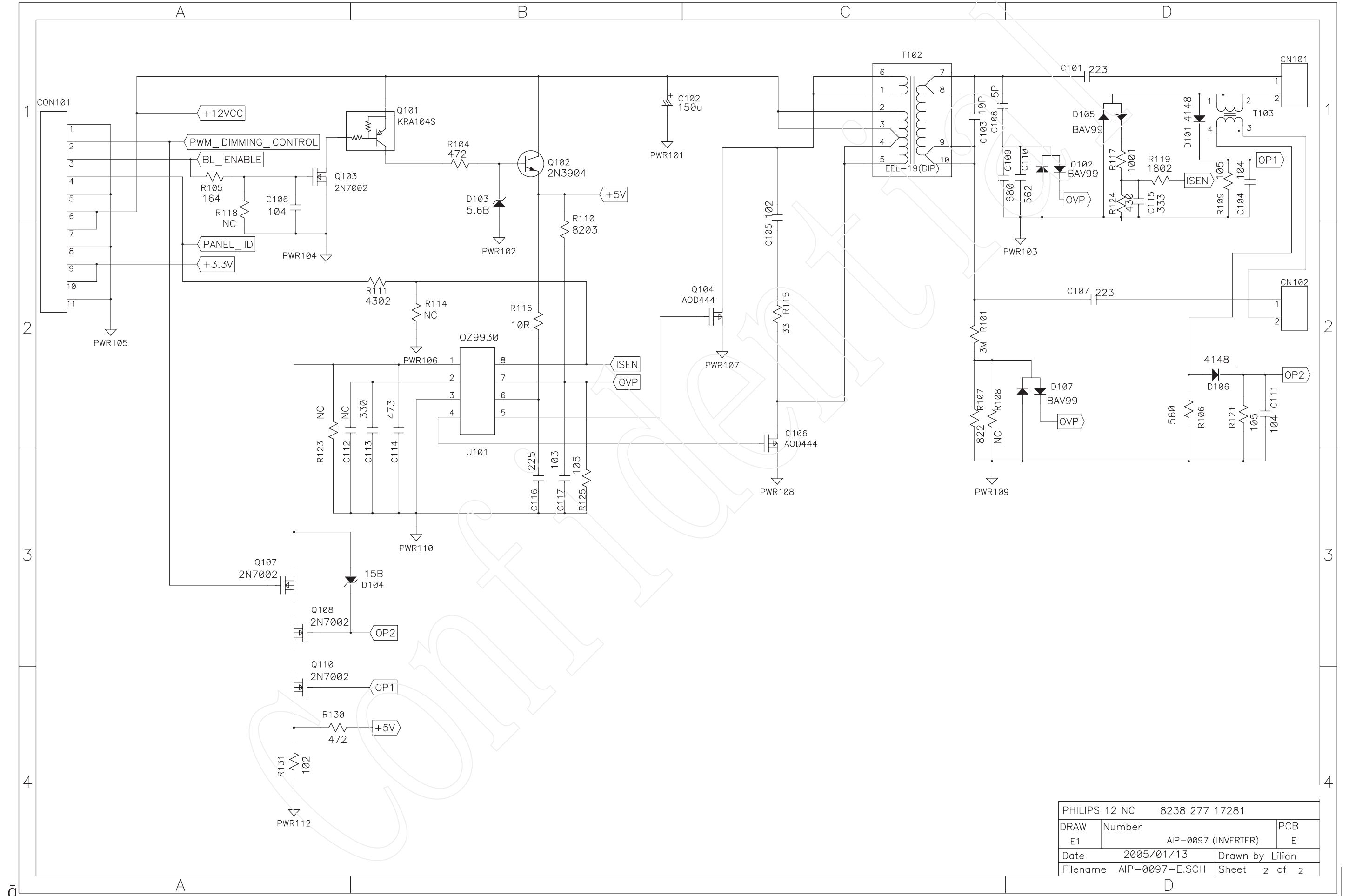
PCB Rev: 2
12NC:8238 277 17291
T50P063.00

Power Schematic Diagram (150S6) - Lien Chang



PHILIPS 12 NC 8238 277 17281		
DRAW	Number	PCB
E1	AIP-0097 (ADAPTOR)	E
Date	2005/01/13	Drawn by Lilian
Filename	AIP-0097-E.SCH	Sheet 1 of 2

Power Schematic Diagram(150S6) - Lien Chang



PHILIPS 12 NC		8238 277 17281	
DRAW	Number	PCB	
E1	AIP-0097 (INVERTER)	E	
Date	2005/01/13	Drawn by Lilian	
Filename	AIP-0097-E.SCH	Sheet 2 of 2	