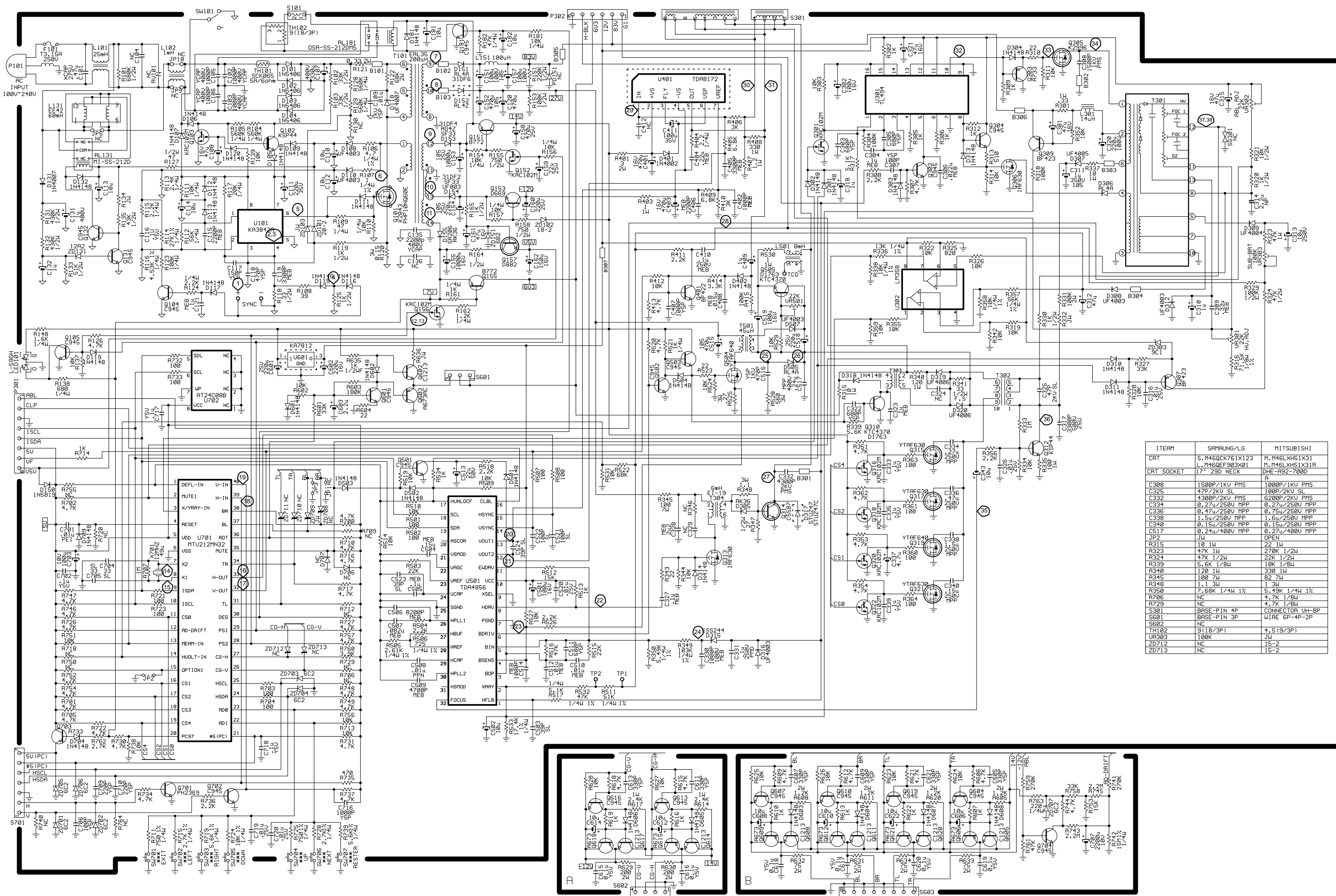


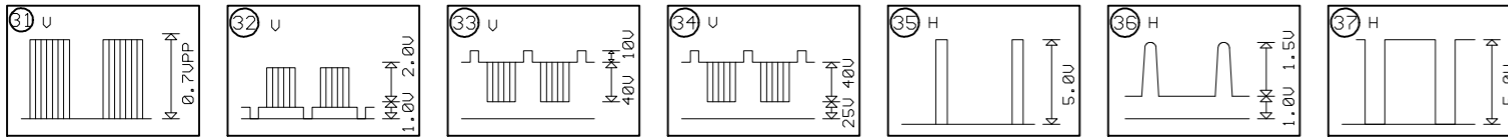
10. SCHEMATIC DIAGRAM MAIN PWB ASSY (FE991SB/DPIus93SB)



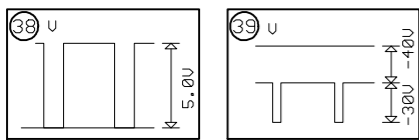
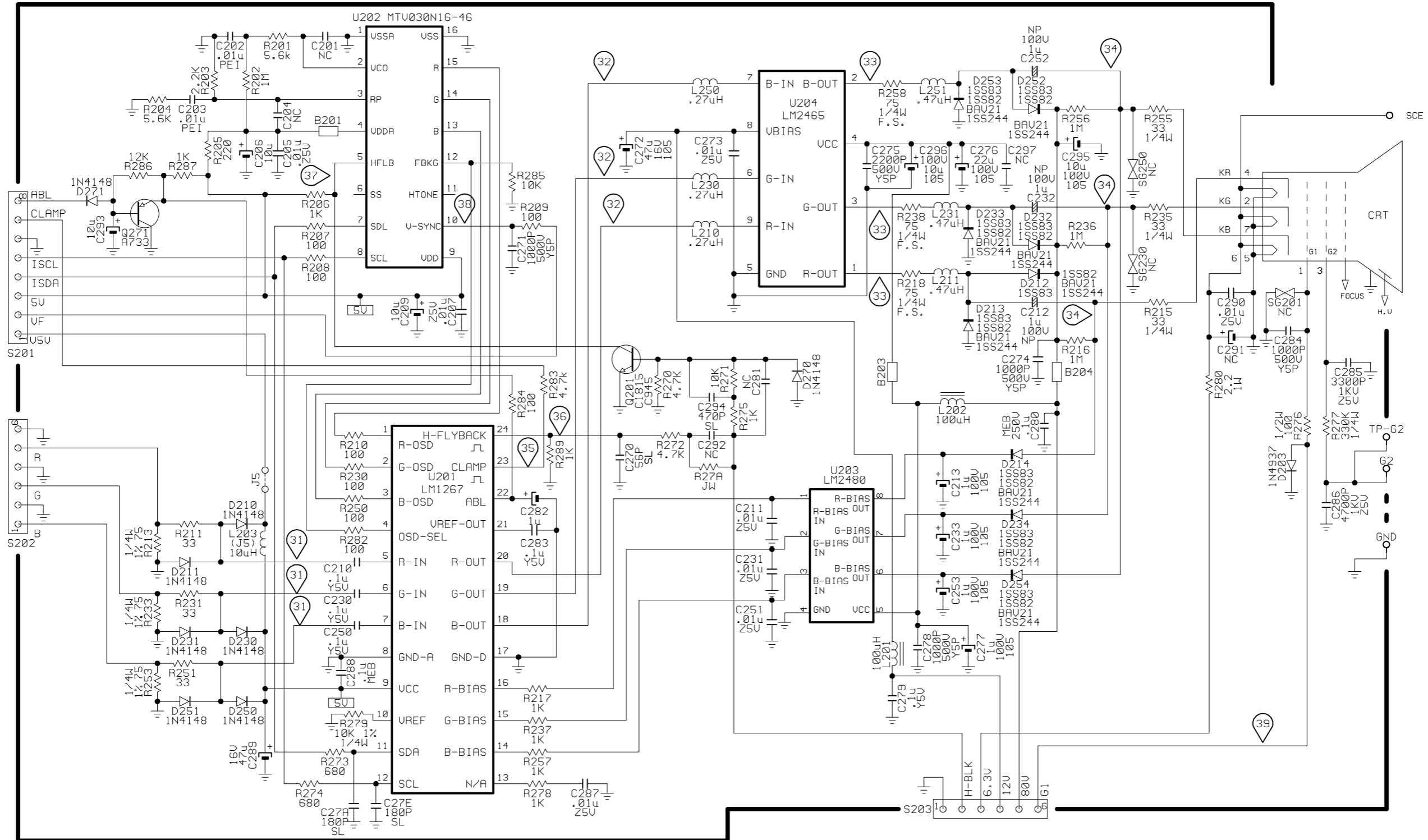
ITEM	SAMSUNG/LG	MITSUBISHI
CRT	S.M46GCK761X123 L.M46GEF903X01	M.M46KH51X31 M.M46KH51X31R
CRT SOCKET	17" 29D NECK	DHE-A92-7800
C308	1500P/1KU PMS	1000P/1KU PMS
C325	47P/2KU SL	100P/2KU SL
C332	4300P/2KU PMS	6200P/2KU PMS
C334	0.27u/250V MPP	0.27u/250V MPP
C336	0.47u/250V MPP	0.75u/250V MPP
C338	1.5u/250V MPP	1.6u/250V MPP
C348	0.15u/250V MPP	0.15u/250V MPP
C517	0.24u/400V MPP	0.27u/400V MPP
JP2	JW	OPEN
R315	10 1W	22 1W
R323	47K 1W	270K 1/2W
R324	47K 1/2W	22K 1/2W
R329	5.6K 1/8W	18K 1/8W
R340	120 1W	330 1W
R345	100 7W	82 7W
R348	1.1 3W	1 3W
R350	7.68K 1/4W 1%	5.49K 1/4W 1%
R706	NC	4.7K 1/8W
R729	NC	4.7K 1/8W
S301	BASE-PIN 4P	CONNECTOR UH-8P
S601	BASE-PIN 3P	WIRE 6P-4P-2P
S602	NC	
TH102	9 (18/3P)	4.5 (9/3P)
UF303	100K	JW
ZD712	NC	15-2
ZD713	NC	15-2

NOTE:
 1. ALL RESISTORS ARE IN OHMS UNLESS OTHERWISE NOTED.
 2. ALL RESISTORS ARE 1% UNLESS OTHERWISE NOTED.
 3. ALL CAPACITANCE PRINTING "50V" IS OMITTED UNLESS OTHERWISE NOTED.

10. SCHEMATIC DIAGRAM CRT PWB ASSY (FE991SB/DPIus93SB)



NOTE:
 1. THE UNIT OF RESISTANCE " OHM " IS OMITTED (K=1000 OHMS AND M=1MEG OHMS)
 2. ALL RESISTORS ARE " 1/8 WATT " , 5 % " UNLESS OTHERWISE NOTED.
 3. ALL CAPACITANCE RATING " 50V " IS OMITTED UNLESS OTHERWISE NOTED.
 4. CAPACITOR VALUES ARE IN F (FARAD) , u=F (10⁻⁶F) , p=F (10⁻¹²F)
 5. VOLTAGES AND WAVEFORMS ARE MEASURED UNDER THE " H " CHARACTER SIGNALS IN THE CONDITIONS OF THE CONTRAST CONTROL IS MAXIMUM, THE BRIGHTNESS CONTROL IS CUT OFF AND ALL OTHER CONTROLS ARE NORMAL OPERATION.
 6. H---HORIZONTAL RATE, V---VERTICAL RATE.
 7. VOLTAGES AND WAVEFORMS ARE MEASURED UNDER THE FOLLOWING SYNC. AND VIDEO
 AC INPUT : 100V
 SYNC. : HORIZONTAL RATE 31.5KHZ TTL LEVEL NEGATIVE
 VERTICAL RATE 60HZ TTL LEVEL NEGATIVE
 VIDEO : ANALOG 0.7uPP POSITIVE



WAVE FORM MAIN PWB ASSY (FE991SB/DPIus93SB)

