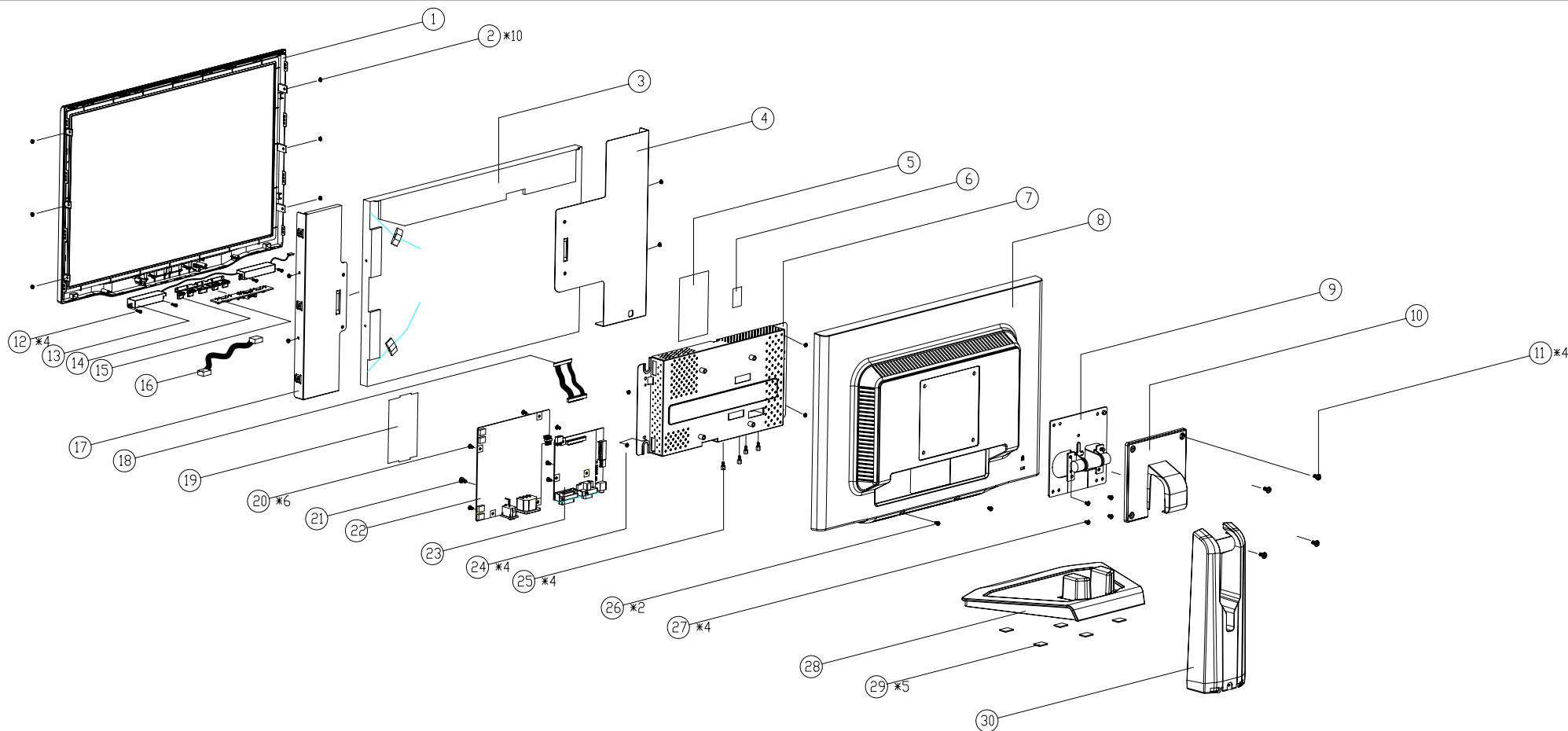


FRU (Field Replaceable Unit) list

This chapter gives you the FRU (Field Replaceable Unit) listing in global configurations of AL2223. Refer to this chapter whenever ordering for parts to repair or for RMA (Return Merchandise Authorization).

NOTE : Please note WHEN ORDERING FRU PARTS, that you should check the most up-to-date information available on your regional web or channel(<http://aicsl.acer.com.tw/spl/>). For whatever reasons a part number change is made, it will not be noted in the printed Service Guide. For ACER-AUTHORIZED SERVICE PROVIDERS, your Acer office may have a DIFFERENT part number code to those given in the FRU list of this printed Service Guide. You MUST use the local FRU list provided by your regional Acer office to order FRU parts repair and service of customer machines.

NOTE: To scrap or to return the defective parts, you should follow the local government ordinance or regulations on how best to dispose it, or follow the rules set by your regional Acer office on how to return it.



Item	Part Number	Part Description	Qty
1	EAWBTB01017	LCD BEZEL WBTB	1
2	MM30030IBJ4	SCREW M3*3-I-NI	10
3	AAM220EW000	LCD(TFT)22" M220EW01 V0 FOR ACER CDN GP	1
4	FAWBTB02013	LCD BKT-L WBTB	1
5	FCL7TA01018	SHIELDING MYLAR L7TA	1
6	FCM7T004014	AL FOIL M7T	1
7	FAWBTB01017	SHIELDING	1
8	EAWBTB02013	LCD COVER	1
9	EBL9TB02013	HINGE ASSY L0TB	1
10	EBL9TB02013	HINGE COVER L9TB	1
11	MM40100B244	SCREW M4.0*10-B BLACK (NYLON)	4
12	MF25080PJB8	SCREW F2.5*8.0-P GP	4
13	DN0TE330F01	SPEAKER ASSY WBTB FG-TE330 GP	1
14	EBWBTB01018	BUTTON WBTB	1
15	23L7TBBB001	L7TB BUTTON/B ASSY	1
16	DDL7TBBU000	CABLE MB-BUTTON	1
17	FAWBTB03010	LCD-BKT-R WBTB	1

Item	Part Number	Part Description	Qty
18	DD0L9ELC030	CABLE LVDS	1
19	FCWBTB01019	MYLAR POWER WBTB	1
20	MM30060BBJ3	SCREW M3.0*6,B(NI) GP	6
21	MM40080BBW1	SCREW M4.0*8.0-B(NI,WASHER)	1
22	AS05B3E0409	ADP/INV,FSP055-2PI02(90-264V,6~7.5MA)GP	1
23	21WBTBMB001	WBTB M/B ASSY(TSUMU58WJ)GP	1
24	MM30060IBJ8	SCREW M3.0*6.0-I(NI) GP	4
25	MBLI1004018	ID NUT LI1	4
26	MF30100PJ23	SCREW F3*10,(BNI) GP	2
27	MF40080IBJ1	SCREW F4.0*8-I(NI)	4
28	EAL0TB04011	BASE L0TB	1
29	GAL7TA01016	RUBBER FOOT L7TA	5
30	EAL0TB03014	STAND L0TB	1

Part Nuber Explode view

Item	Part Number	Description	Qty	Item	Part Number	Description	Qty
1	EAWBTB01017	LCD BEZEL WBTB	1	16	DDL7TBBU000	CABLE MB-BUTTON	1
2	MM30030IBJ4	SCREW M3*3-I-NI	10	17	FAWBTB03010	LCD-BKT-R WBTB	1
3	AAM220EW000	LCD(TFT)22"M220EW01 V0 FOR ACER CON GP	1	18	DD0L9ELC030	CABLE LVDS	1
4	FAWBTB02013	LCD BKT-L WBTB	1	19	FCWBTB01019	MYLAR POWER WBTB	1
5	FCL7TA01018	SHIELDING MYLAR L7TA	1	20	MM30060BBJ3	SCREW M3.0*6.0,B(NI)GP	6
6	FCM7T004014	AL FOIL M7T	1	21	MM40080BBW1	SCREW M4.0*8.0-B(NI,WASHER)	1
7	FAWBTB01017	SHIELDING	1	22	AS05B3E0409	ADP/INV,FSP055-2P102(90-264V,6~7.5MA)GP	1
8	EAWBTB02013	LCD COVER	1	23	21WBTBMB001	WBTB M/B ASSY(TSUMU58WJ)GP	1
9	FAL0TB08016	HINGE ASSY L0TB	1	24	MM30060IBJ8	SCREW M3.0*6.0-I(NI)GP	4
10	EBL9TB02013	HINGE COVER L9TB	1	25	MBL11004018	IO NUT LI1	4
11	MM40100B244	SCREW M4.0*10-B BLACK (NYLOK)	4	26	MF30100PJ23	SCREW F3*10,(BNI)GP	2
12	MF25080PJB8	SCREW F2.5*8.0-P GP	4	27	MF40080IBJ1	SCREW F4.0*8-I(NI)	4
13	DN0TE330F01	SPEAKER ASSY WBTB FG-TE330 GP	1	28	EAL0TB04011	BASE L0TB	1
14	EBWBTB01018	BUTTON WBTB	1	29	GAL7TA01016	RUBBER FOOT L7TA	5
15	23L7TBBB001	L7TB BUTTON/B ASSY	1	30	EAL0TB03014	STAND L0TB	1

Part list

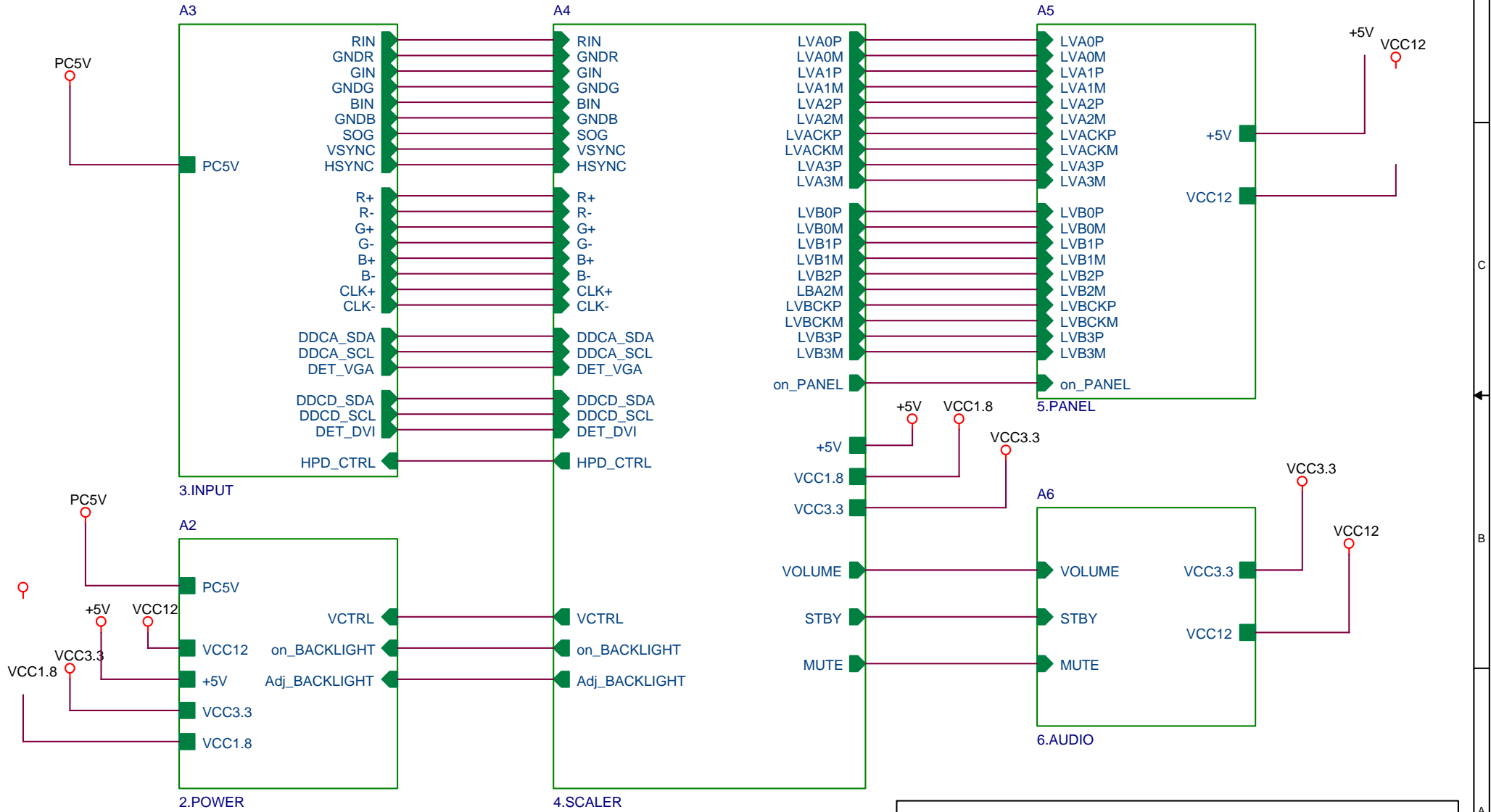
Above picture show th description of the following component

Item	Picture	Description	Part No
1		back cover	25WBTBLC006
2		bezel	34WBTBLB009
3		base	38L0TBBS005
4		stand	26L0TBSA001

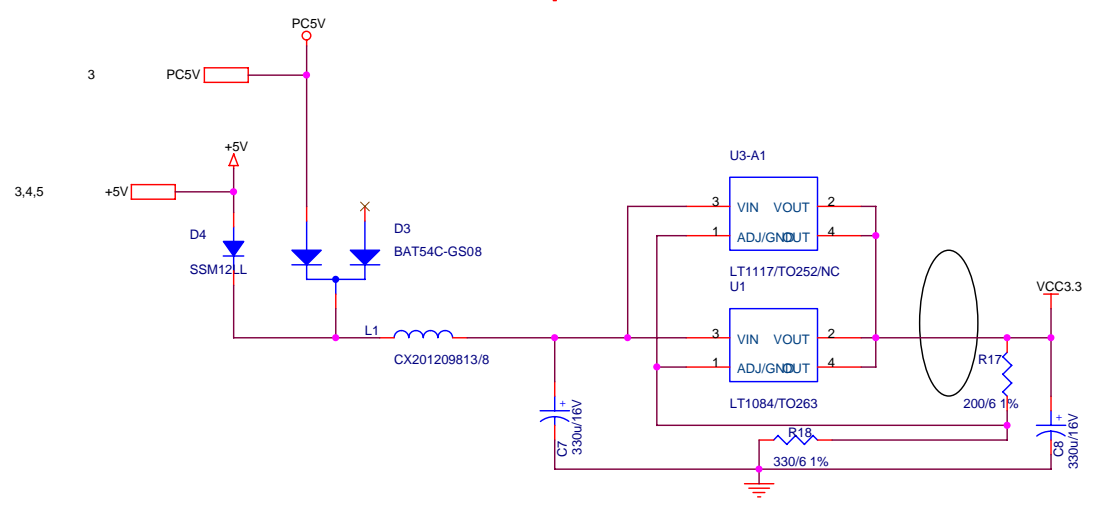
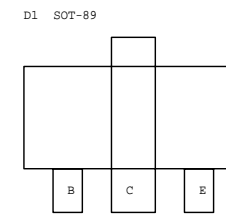
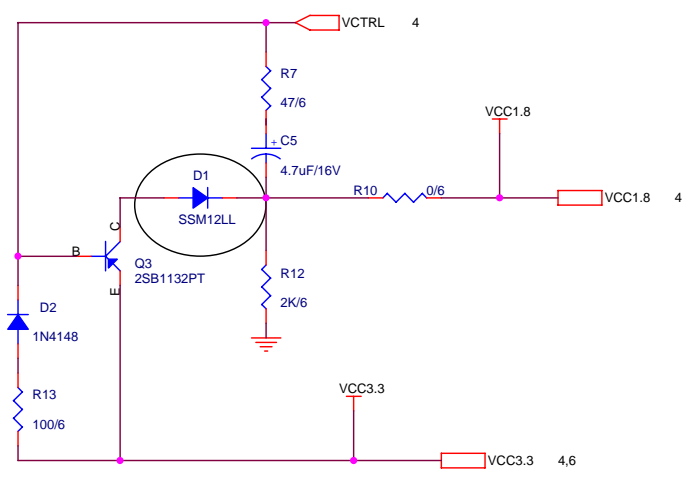
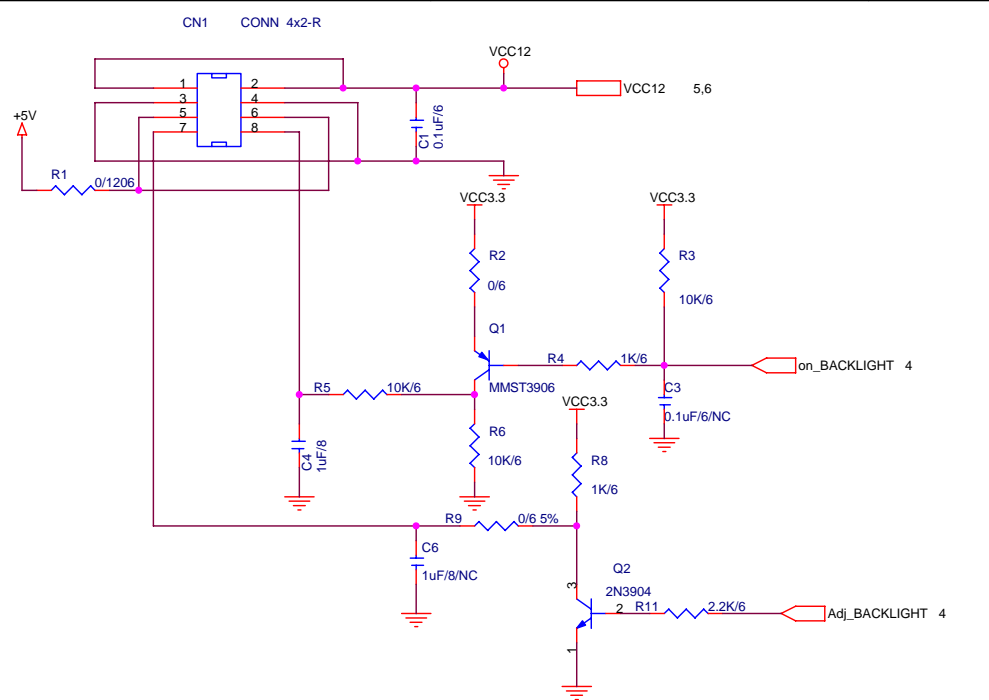
SCHEMATIC DIAGRAM

Chapter 7

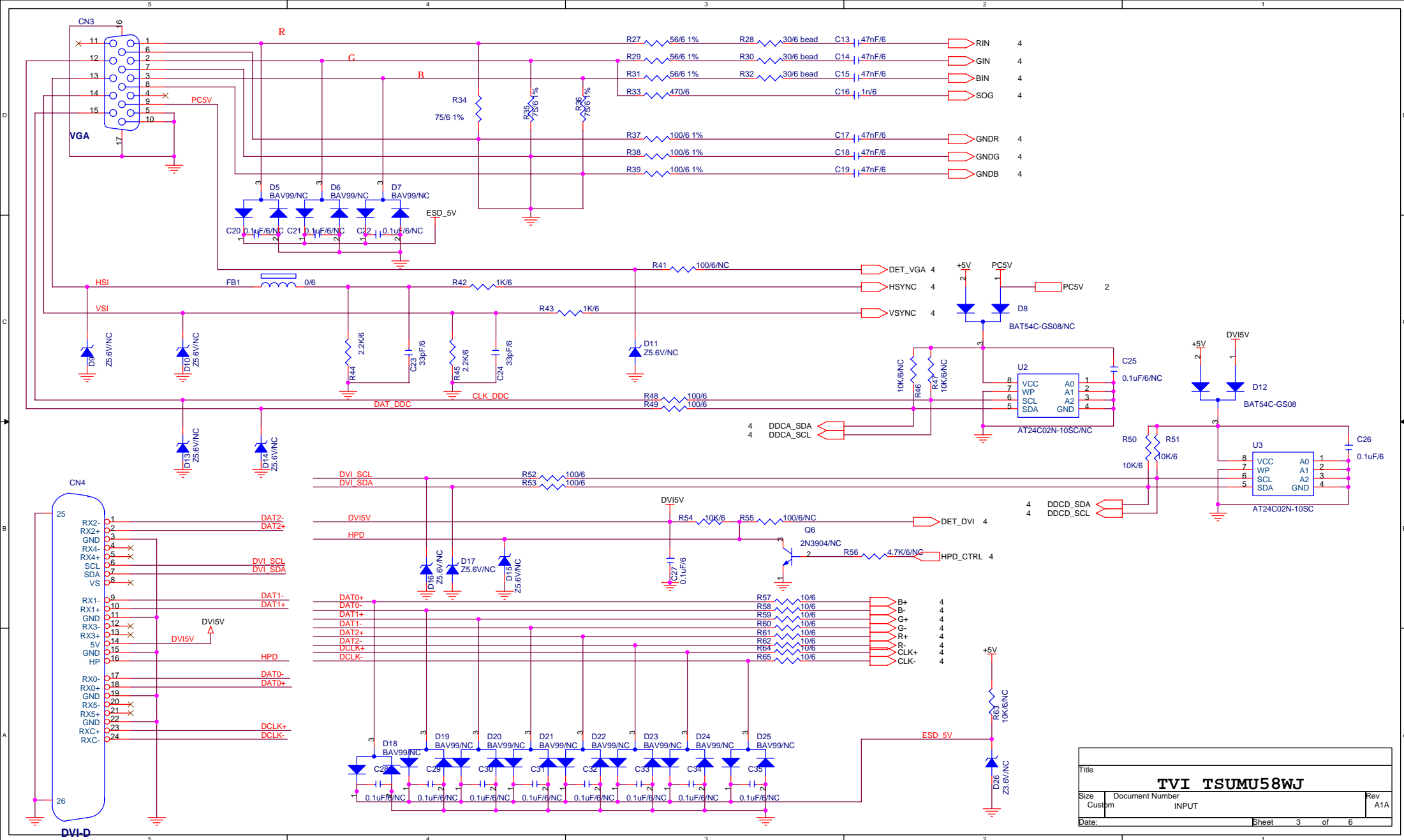
Main Board Circuit



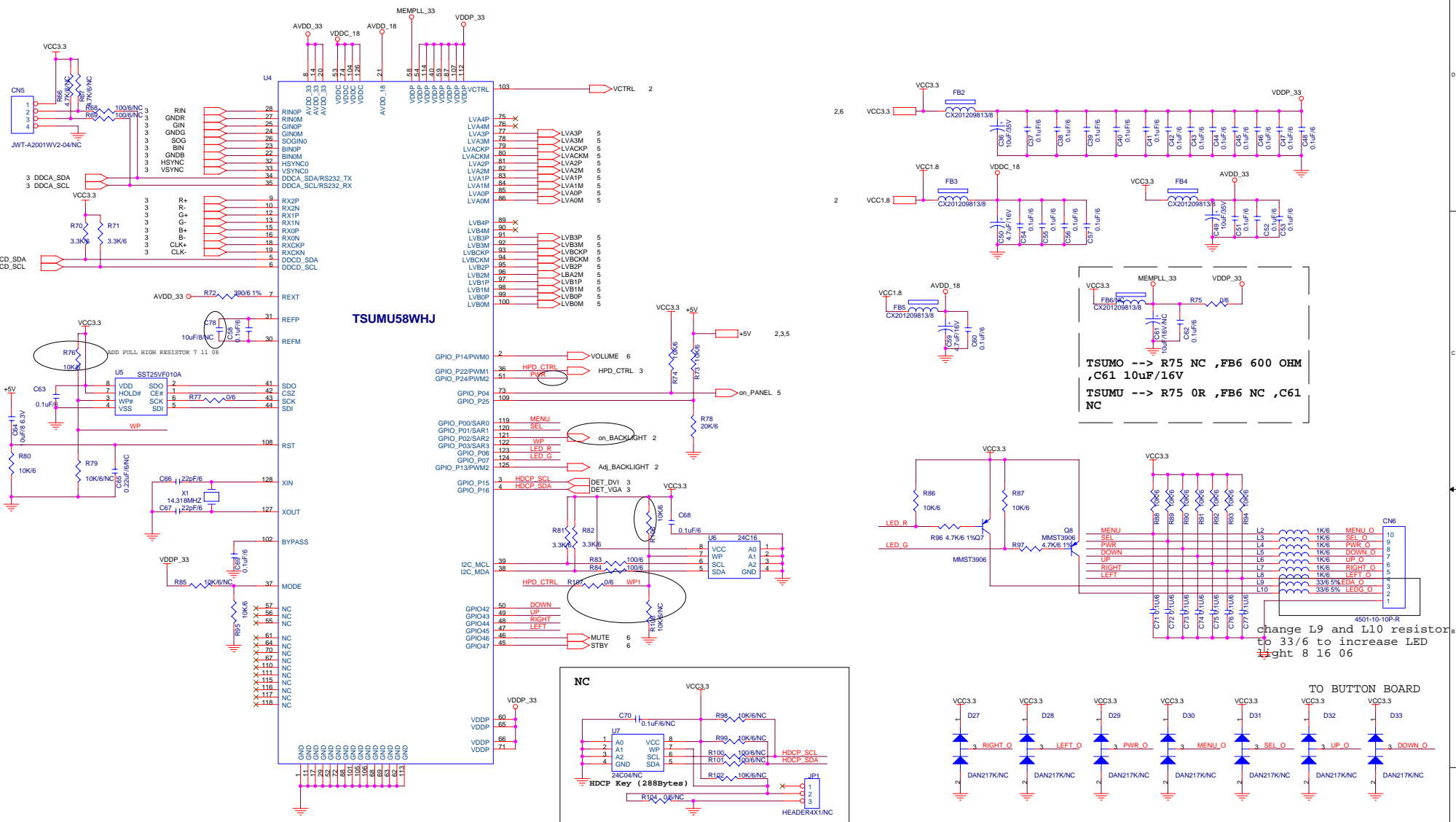
Title		
TVI TSUMU58WJ		
Size A	Document Number TOP	Rev A1A
Date:	Sheet	1 of 6



Title		
TVI TSUMU58WJ		
Size B	Document Number POWER	Rev A1A
Date:	Sheet 2 of 6	

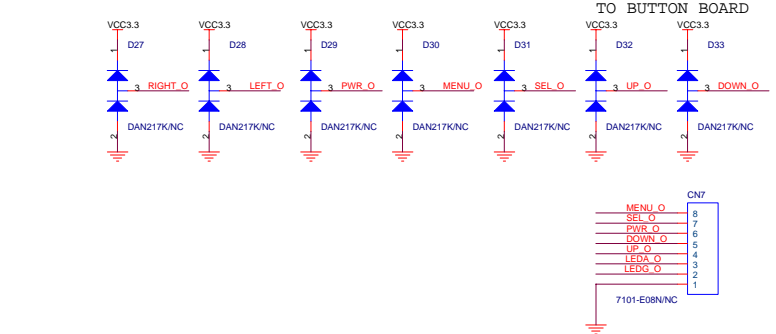
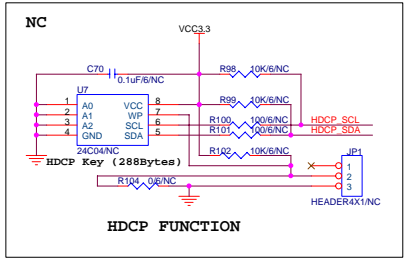


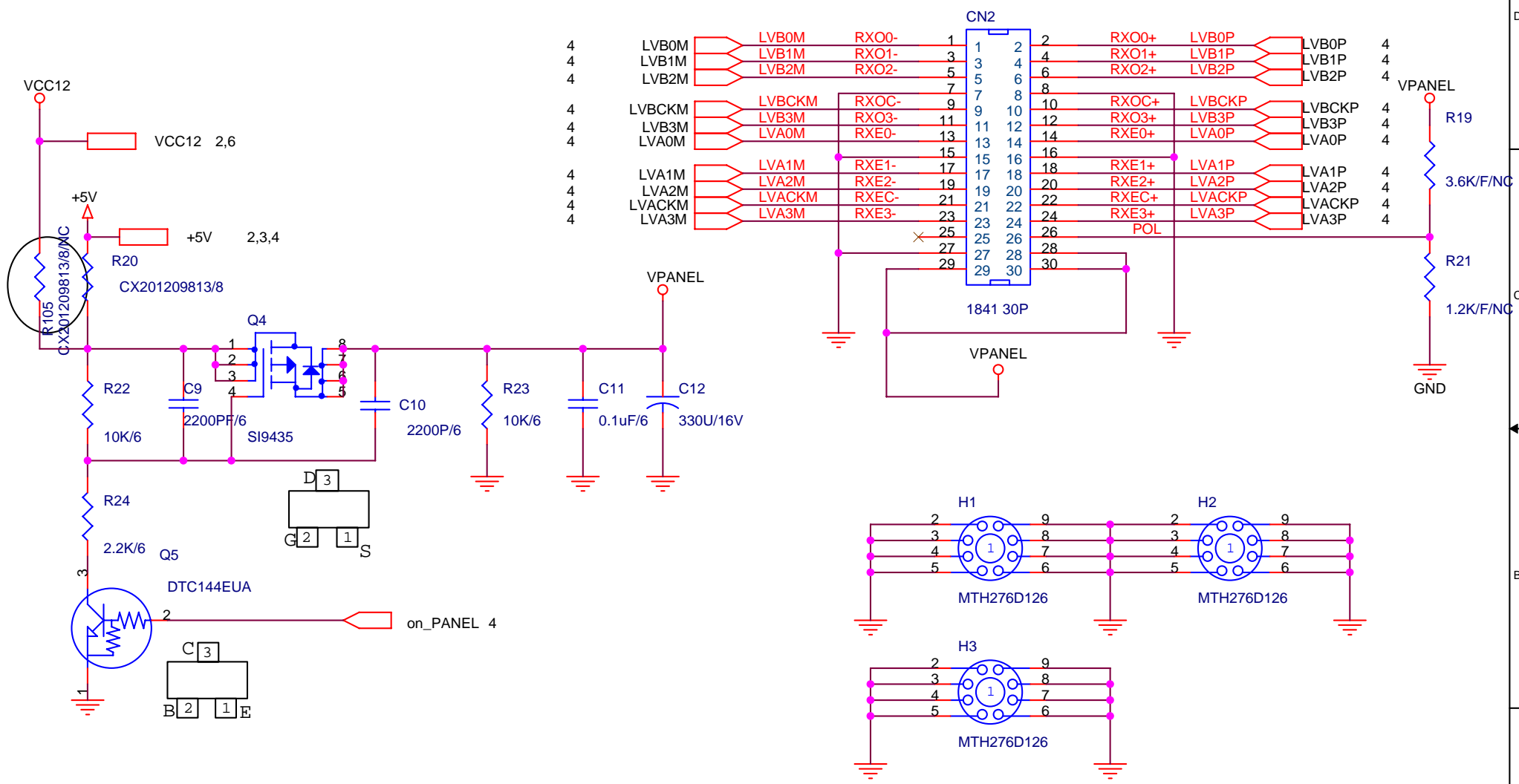
Title		
TVI TSUMU58WJ		
Size	Document Number	Rev
Custom	INPUT	A1A
Date:	Sheet	3 of 6



TSUMO --> R75 NC ,FB6 600 OHM ,C61 10uF/16V
TSUMU --> R75 0R ,FB6 NC ,C61 NC

change L9 and L10 resistor to 33/6 to increase LED light 8 16 06

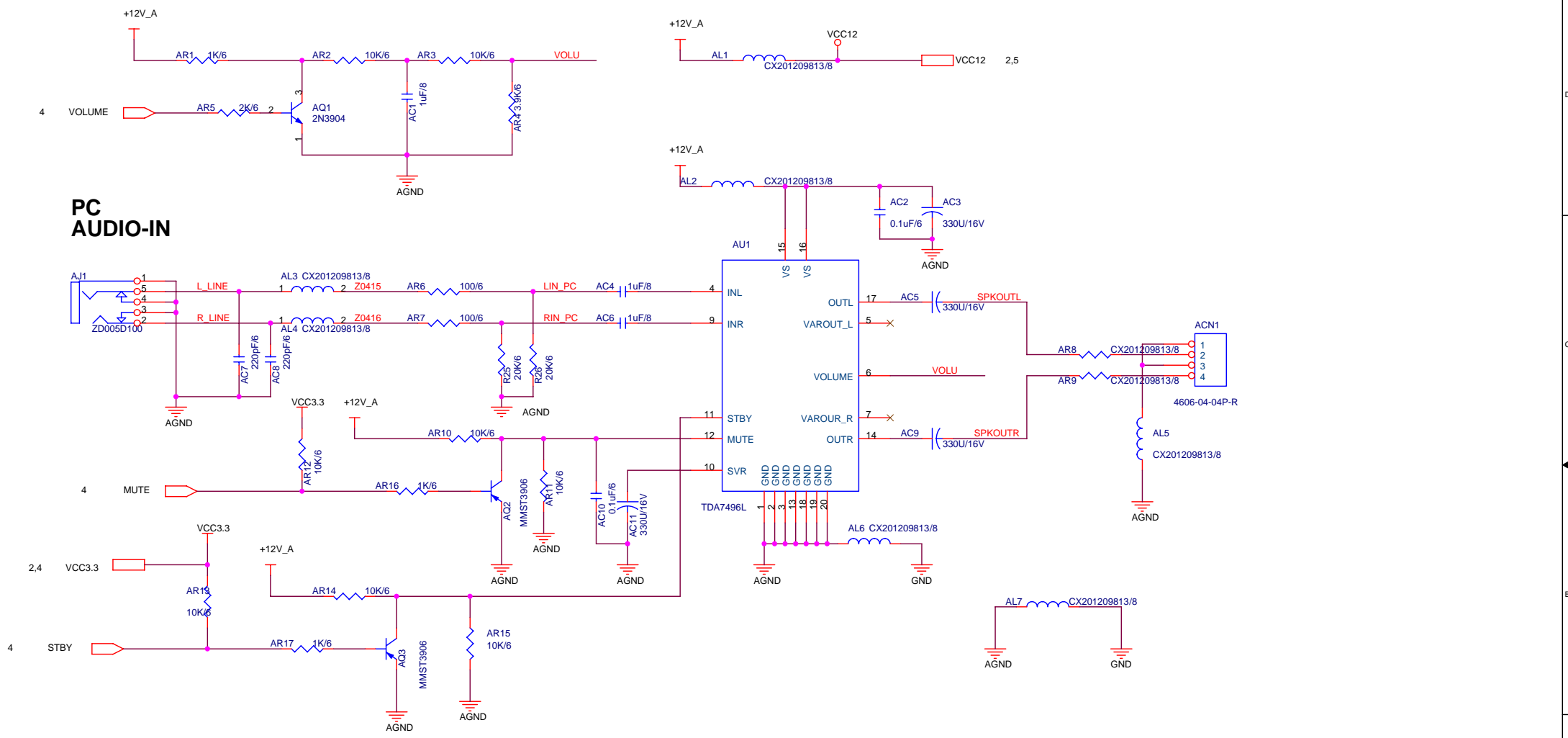




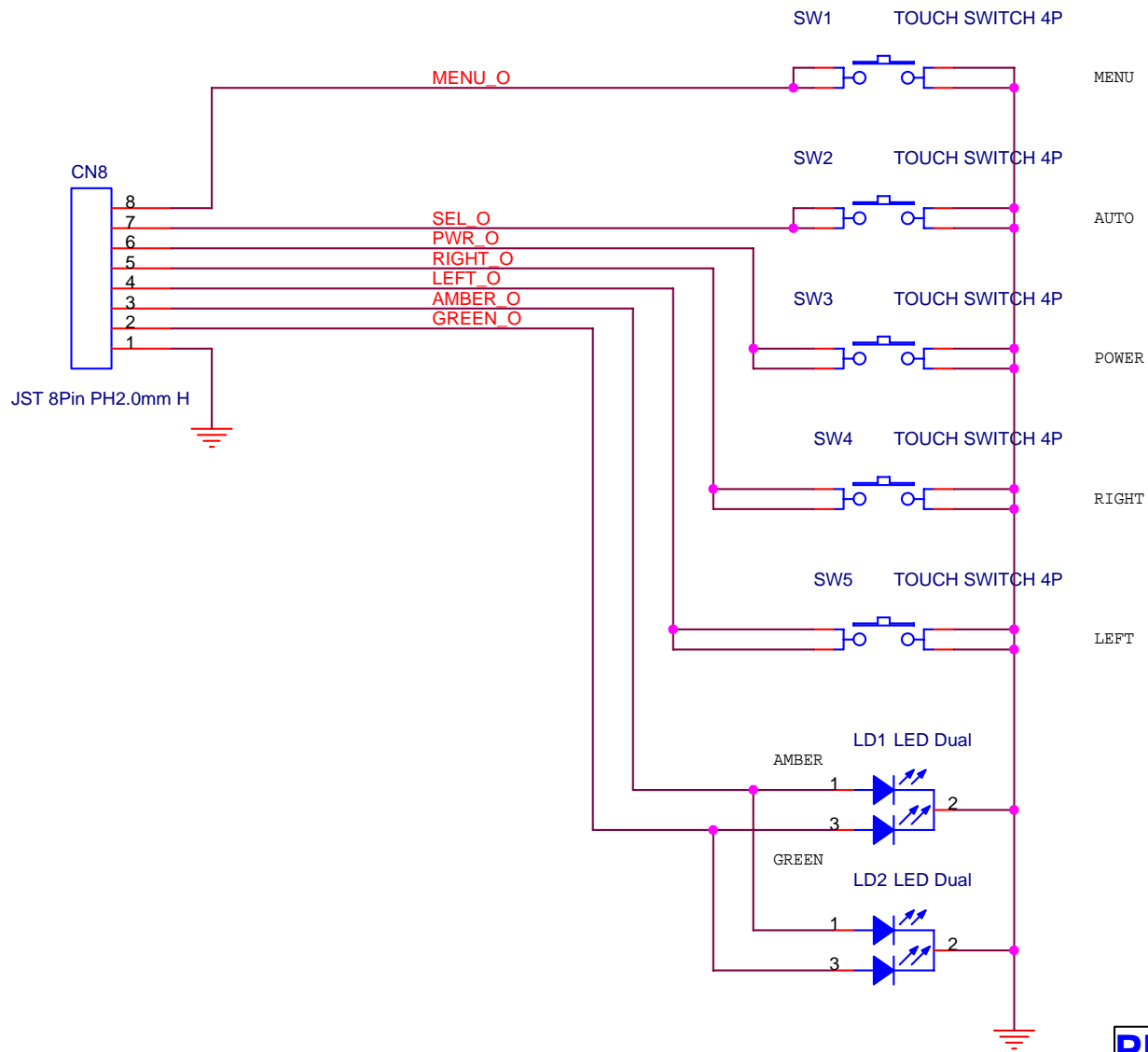
Pin	Signal	Pin	Signal	Pin	Signal
1	LVB0M	2	RXO0+	3	LVB0P
3	LVB1M	4	RXO1+	4	LVB1P
5	LVB2M	6	RXO2+	6	LVB2P
7		7		8	
9	LVBCKM	9	RXOC-	10	RXOC+
11	LVB3M	11	RXO3-	12	RXO3+
13	LVA0M	13	RXE0-	14	RXE0+
15		15		16	
17	LVA1M	17	RXE1-	18	RXE1+
19	LVA2M	19	RXE2-	20	RXE2+
21	LVACKM	21	RXEC-	22	RXEC+
23	LVA3M	23	RXE3-	24	RXE3+
25		25		26	POL
27		27		28	
29		29		30	

Title		
TVI TSUMU58WJ		
Size	Document Number	Rev
A	PANEL	A1A
Date:	Tuesday, July 11, 2006	Sheet 5 of 6

PC AUDIO-IN



Title		
TVI TSUMU58WJ		
Size B	Document Number	Rev A1A
Date:	Tuesday, July 11, 2006	Sheet 6 of 6



PROJECT NAME:

L7TB / L9TB / L0TB / WDTB/WBTB

Title

Key Board

Size
A

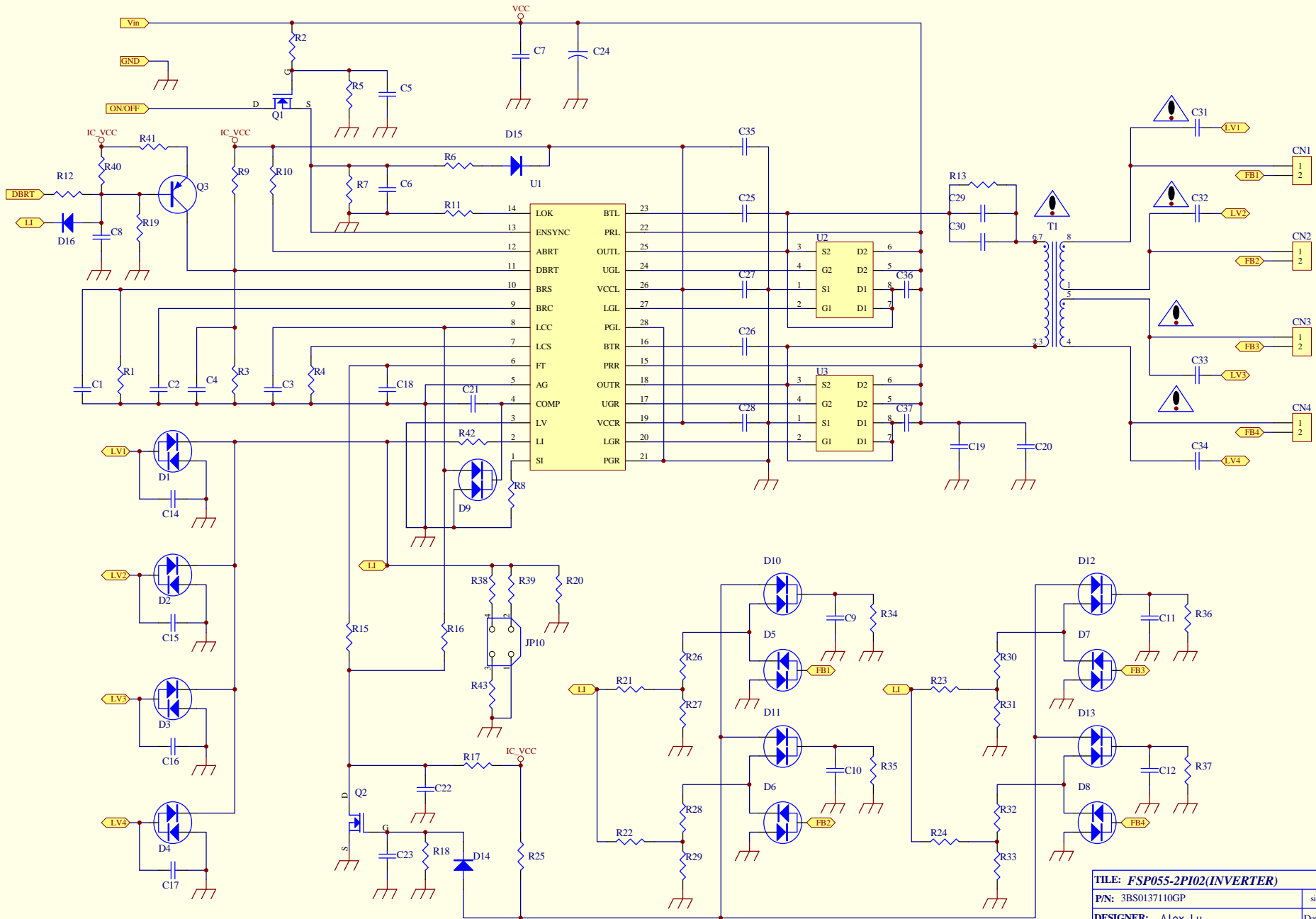
Document Number

L7TB / L9TB / L0TB / WDTB/WBTB Key Board

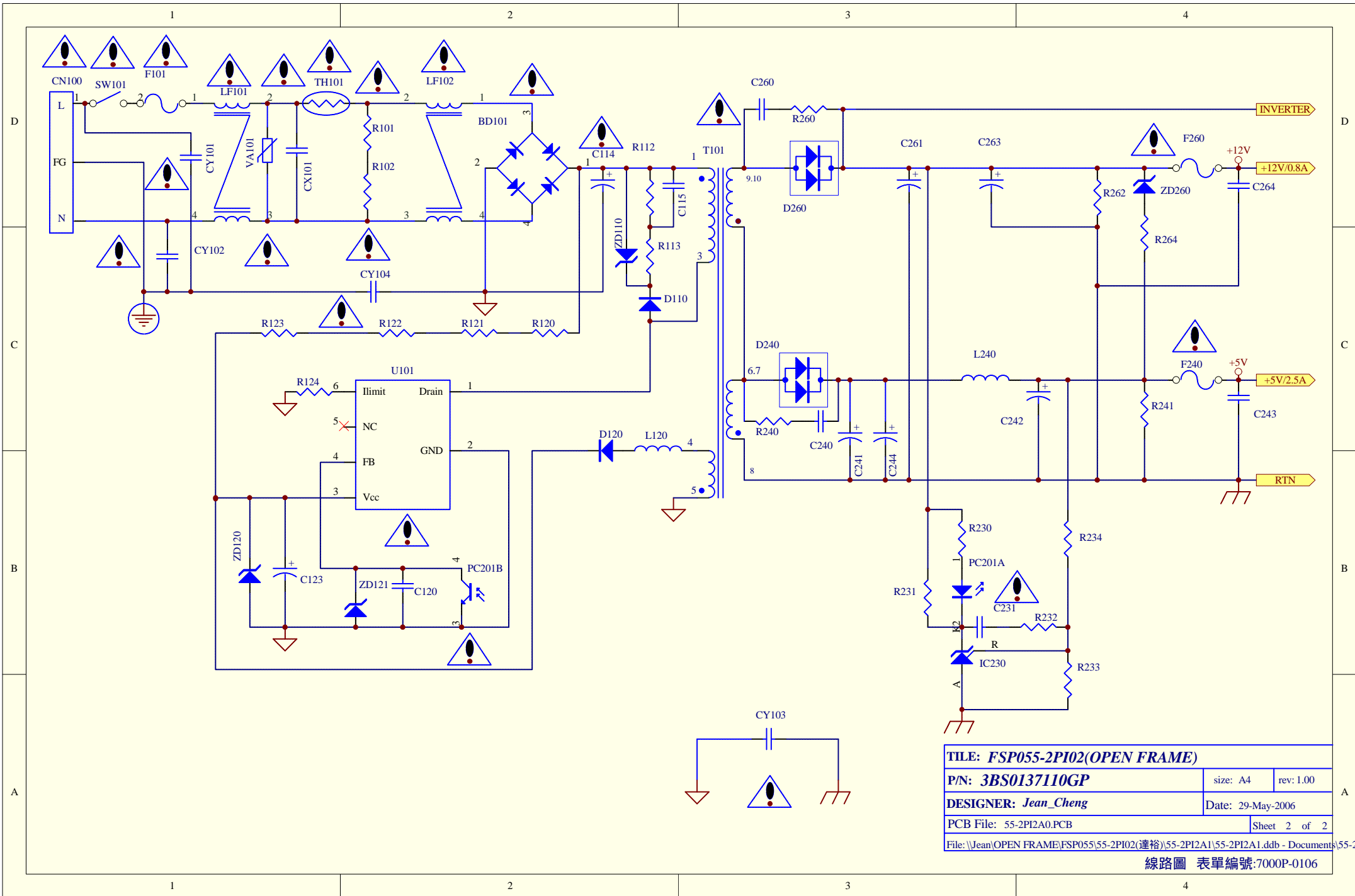
Rev
A2A

Date: Monday, October 31, 2005

Sheet 2 of 8



TILE: FSP055-2PI02(INVERTER)		
P/N: 3BS0137110GP	size: A3	rev: 1.00
DESIGNER: Alex_Lu	Date: 24-May-2006	
PCB File: 55-2PI2A0.PCB	Sheet 1 of 2	
File: \\Jean\OPEN FRAME\FSP055-2PI02(運裕)\55-2PI2A0\55-2PI2A0.ddb - Documents\55-2PI2A0\01.SCH		



TITLE: <i>FSP055-2PI02(OPEN FRAME)</i>		
P/N: <i>3BS0137110GP</i>	size: A4	rev: 1.00
DESIGNER: <i>Jean_Cheng</i>	Date: 29-May-2006	
PCB File: 55-2PI2A0.PCB	Sheet 2 of 2	
File: \\Jean\OPEN FRAME\FSP055\55-2PI02(達裕)\55-2PI2A1\55-2PI2A1.ddb - Documents\55-2		

線路圖 表單編號:7000P-0106