

S5L5025 PROMOTION BOARD for CHINA(Ver 0.0)

128 PIN

Ver 0.0

<< CONTENTS >>

SHEET #	
1	COVER (THIS PAGE)
2	S5L5025, SDRAM,SPI FLASH ETC.
3	AM5888, DECK CONNECTORS
4	VIDEO AMP, CONNECTOR
5	PWM AUDIO
6	POWER

5025 + AM5888/5869
DECK :IM-DL6) / SANYO-HD65 /HITACHI-1200X

REVISION HISTORY

Version	DATE	
0.0	2007.8.7	

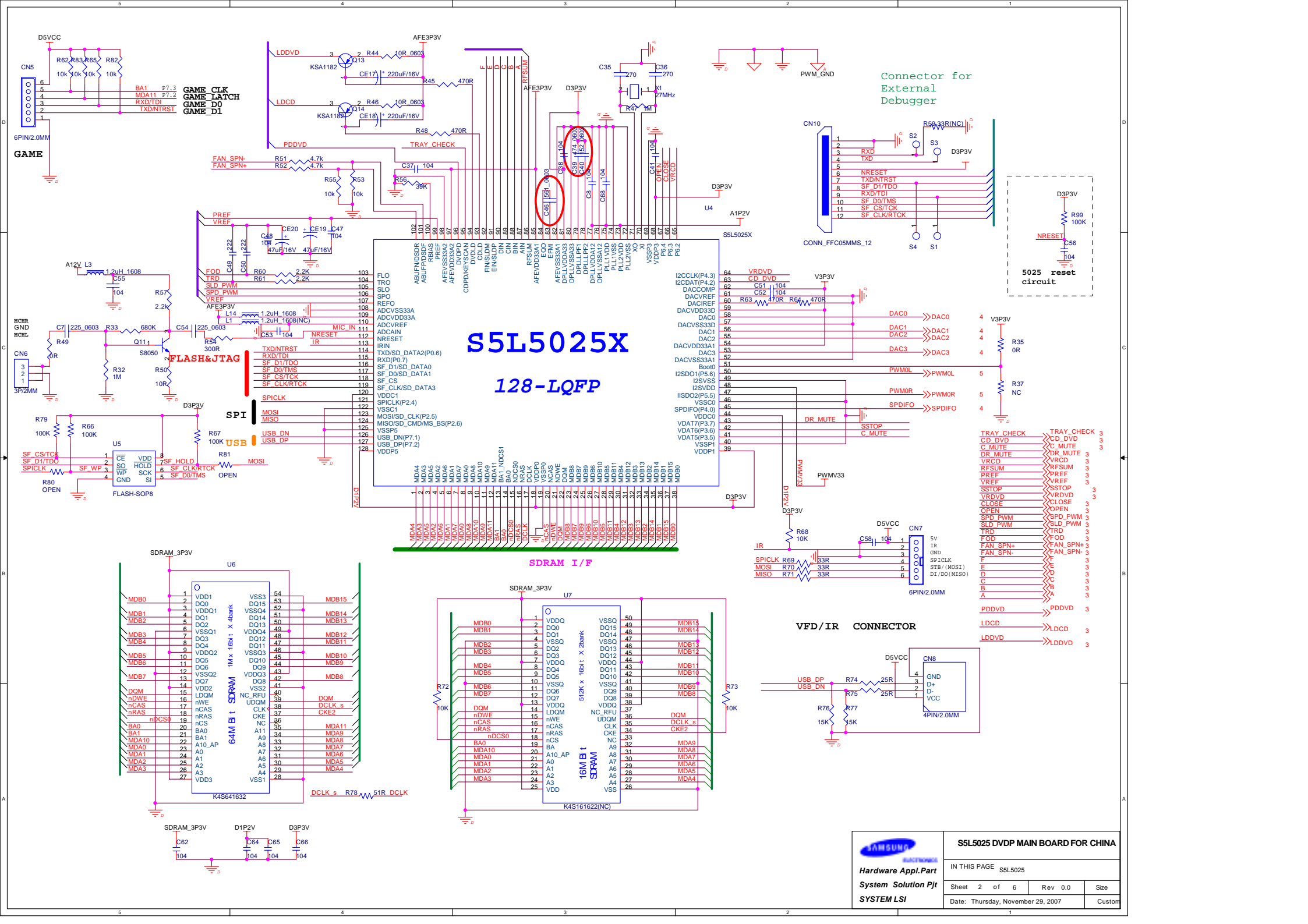
VIDEO MODE SELECTED

VIDEO MODE	P0.2	P0.1	P0.3		DAC5	DAC4	DAC3	DAC0	DAC1	DAC2
							CVBS	Y/G	Pb/B	Pr/R
								S-Y	S-C	

CVBS signal always output

GPIO	PIN	FUNCTION	MODULE	REM
P0.0	N/A			
P0.1	N/A			
P0.2	N/A			
P0.3	N/A			
P0.4	N/A			
P0.5	N/A			
P0.6	114	UART_TXD/NTRST/GAME_D1	UART/ARM DEBUG/GAME PORT	
P0.7	115	UART_RXD/TDI/GAME_D0	UART/ARM DEBUG/GAME PORT	
P1.0	N/A			
P1.1	N/A			
P1.2	N/A			
P1.3	N/A			
P1.4	N/A			
P1.5	N/A			
P2.0	116	SF_DO/TDO	SPI FLASH/ARM DEBUG	
P2.1	117	SF_DI/TMS	SPI FLASH/ARM DEBUG	
P2.2	118	SF_CS/TCK	SPI FLASH/ARM DEBUG	
P2.3	119	SF_CLK/RTCK	SPI FLASH/ARM DEBUG	
P2.4	121	SPICLK	VFD CONTROL	
P2.5	123	MOSI	VFD CONTROL	
P2.6	124	MISO	VFD CONTROL	
P3.0	N/A			
P3.1	N/A			
P3.2	N/A			
P3.3	N/A			
P3.4	N/A			
P3.5	41	C_MUTE	AUDIO CONTROL	
P3.6	42	CLOSE_SW	MOTOR CONTROL	
P3.7	43	DR_MUTE	MOTOR CONTROL	
P4.0	45	SPDIFO	SPDIF OUTPUT	
P4.1	N/A			
P4.2	63	SSTOP(CD/DVD)	MOTOR CONTROL	
P4.3	64	VRDVD	MOTOR CONTROL	
P5.0	N/A			
P5.1	N/A			
P5.2	N/A			
P5.3	N/A			
P5.4	N/A			
P5.5	58	PWM0_L	PWM AUDIO	
P5.6	62	PWM0_R	PWM AUDIO	
P5.7	N/A			
P6.0	N/A			
P6.1	N/A			
P6.2	65	VRCD	PD CONTROL	
P6.3	66	CLOSE	MOTOR CONTROL	
P6.4	67	OPEN	MOTOR CONTROL	
P6.5	N/A			
P6.6	N/A			
P7.0	113	IR	REMOCON	
P7.1	125	USB_DN	USB/SERVO_MON	
P7.2	126	USB_DP	USB/SERVO_MON	
P7.3	12	MDA11/GAME_LATCH	GAME PORT	
P7.4	13	BA1_nDCS1/GAME_CLK	GAME PORT	

P8.0: SPD_SENSE read only(0x3CF0_0084)



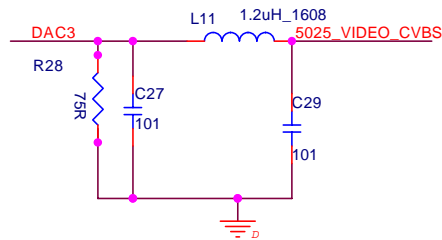
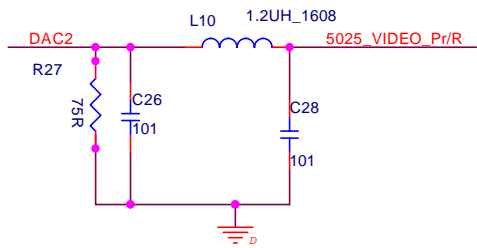
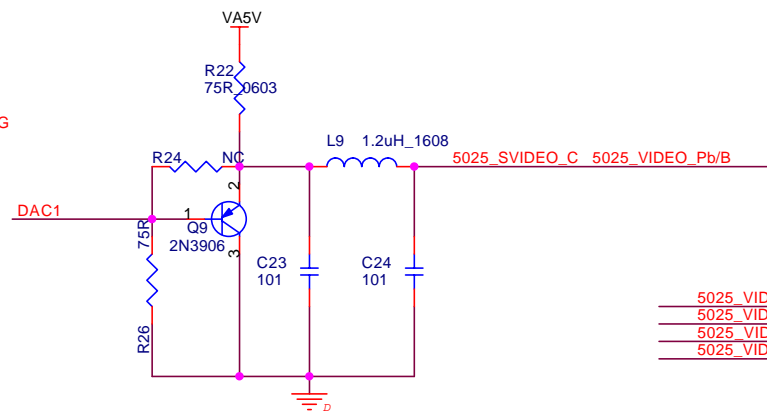
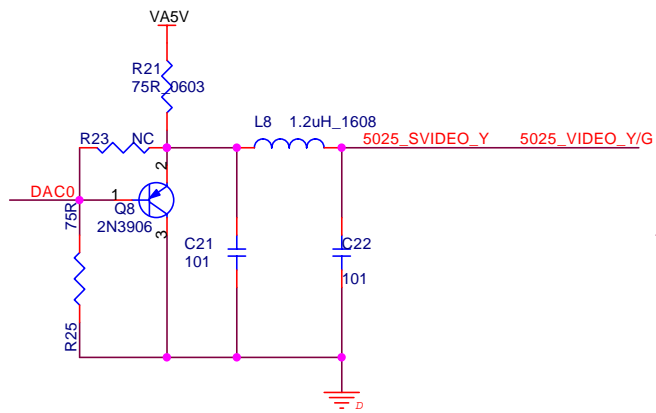
S5L5025X 128-LQFP

Connector for
External
Debugger

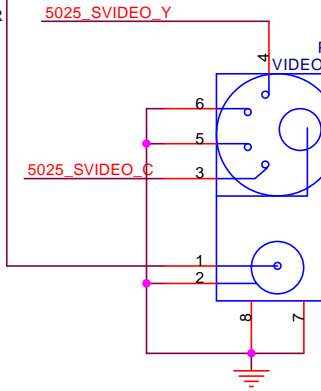
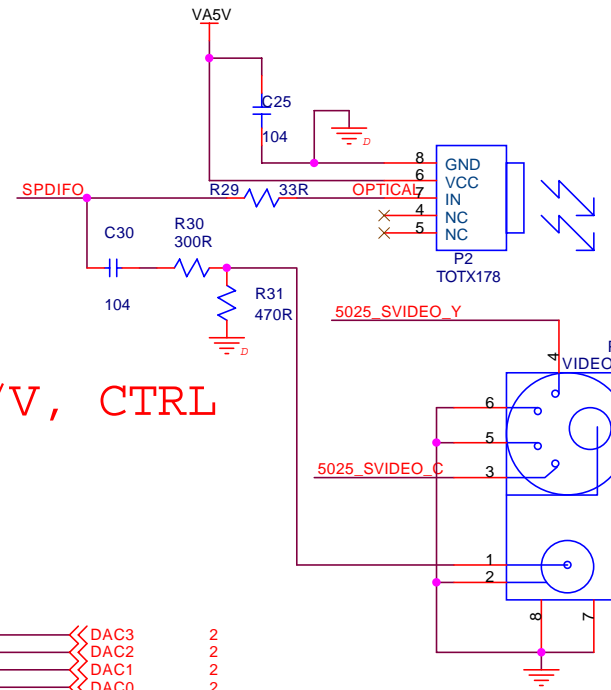
5025 reset
circuit

VFD/IR CONNECTOR

 Hardware Appl.Part System Solution Pjt SYSTEM LSI	S5L5025 DVDP MAIN BOARD FOR CHINA		
	IN THIS PAGE S5L5025		
Sheet 2 of 6	Rev 0.0	Date: Thursday, November 29, 2007	Size
		Custom	

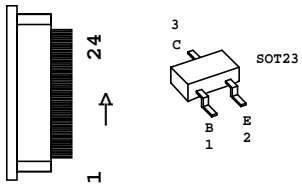


TO 5025, A/V, CTRL

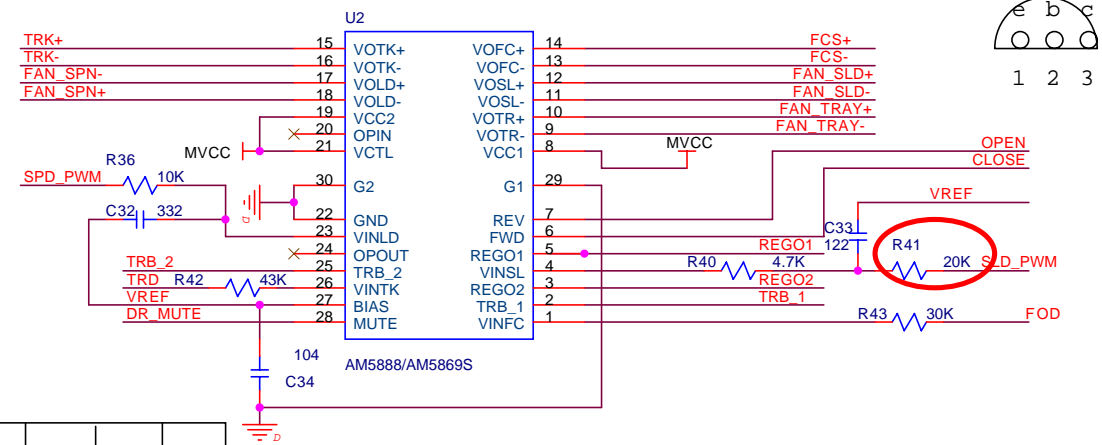
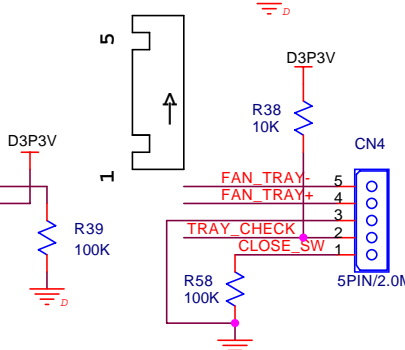
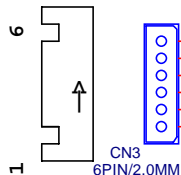
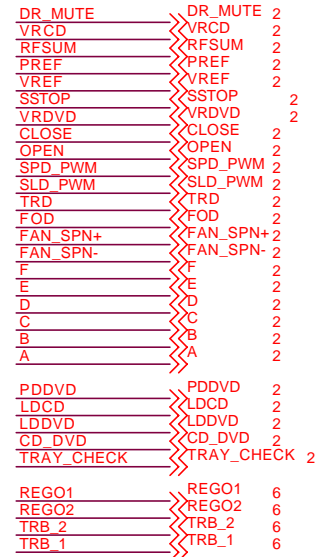
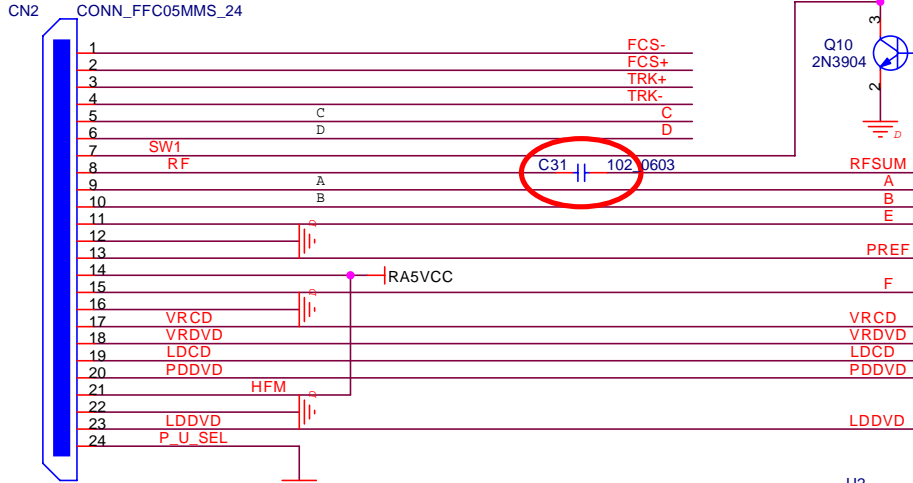


<p>Hardware Appl.Part System Solution Pjt SYSTEM LSI</p>	S5L5025 DVDP MAIN BOARD FOR CHINA		
	IN THIS PAGE VIDEO,DIGITAL AUDIO,SCART,VGA		
	Sheet 3 of 6	Rev 0.0	Size
	Date: Thursday, November 29, 2007		Custom

FFC CONNECTOR



For DL6/HD65/1200X



	SPD	FOD	TRD	SLD	SLD RC	RFSUM								
DL6-FS/FG														
DL6-CH														
1200X														
HD65														

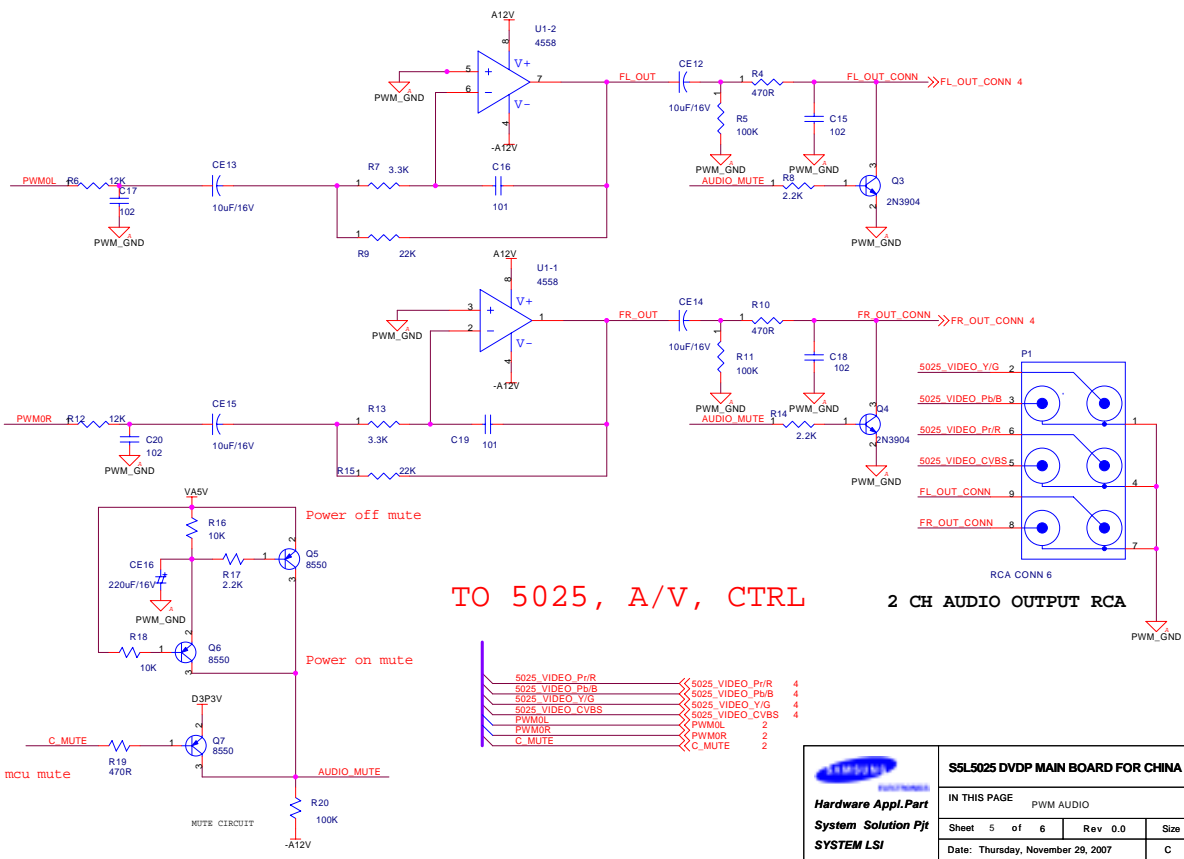
Hardware Appl.Part
System Solution Pjt
SYSTEM LSI

S5L5025 DVDP MAIN BOARD FOR CHINA

IN THIS PAGE P/U MD

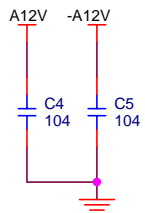
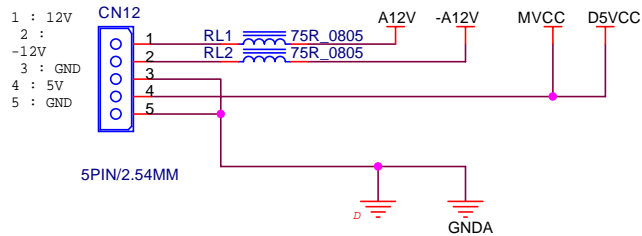
Sheet 3 of 6 Rev 0.0 Size

Date: Thursday, November 29, 2007 Custom

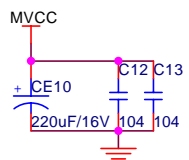


	SSL5025 DVDP MAIN BOARD FOR CHINA		
	IN THIS PAGE PWM AUDIO		
	Sheet 5 of 6	Rev 0.0	Size
	Date: Thursday, November 29, 2007		C

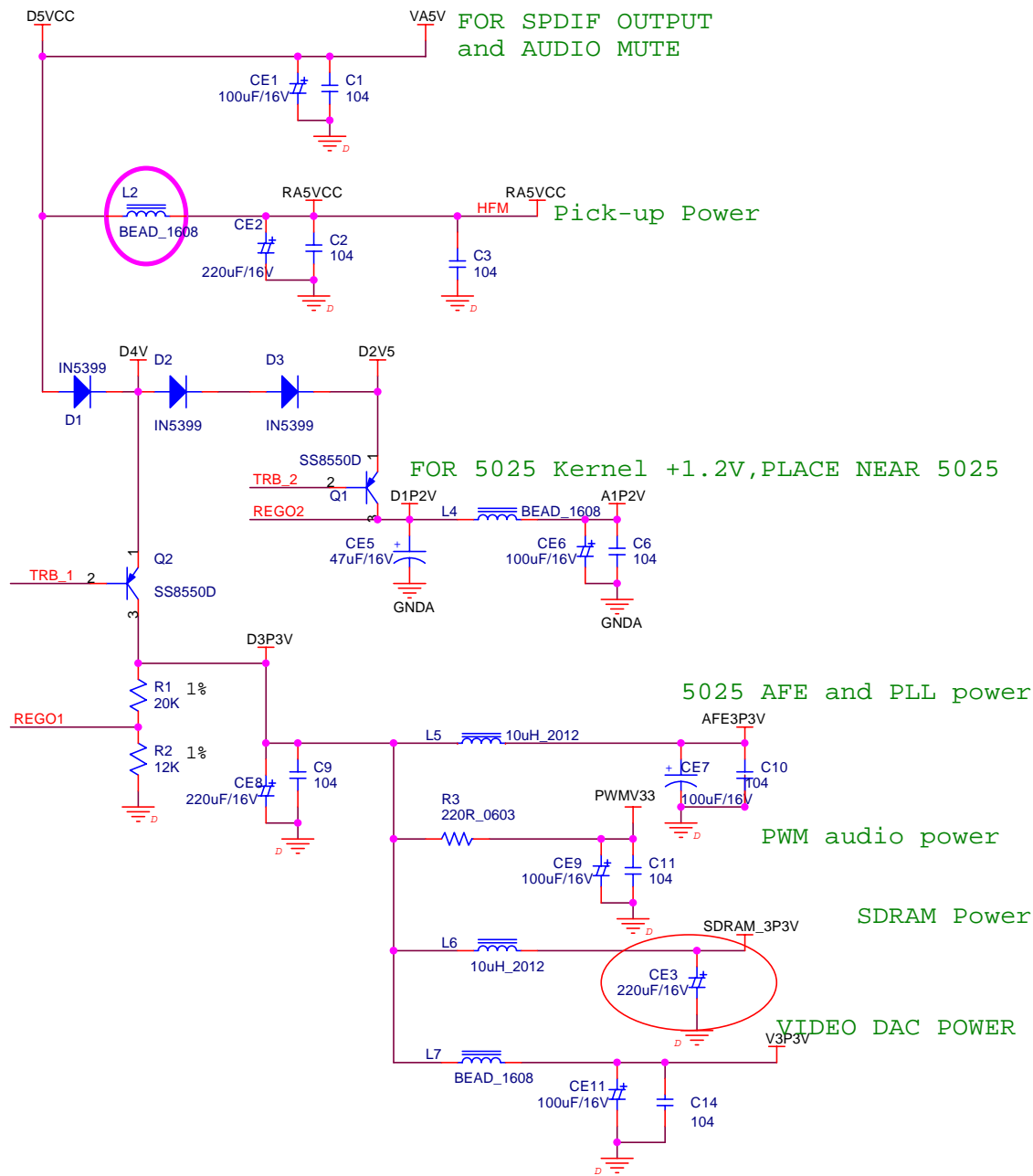
POWER INPUT FROM EXTERNAL POWER BOARD



FOR ADUIO AMP IC, PLACE NEAR AUDIO AMP



FOR MOTOR DRIVER IC, +5V



FOR SPDIF OUTPUT and AUDIO MUTE

Pick-up Power

FOR 5025 Kernel +1.2V, PLACE NEAR 5025

5025 AFE and PLL power

PWM audio power

SDRAM Power

VIDEO DAC POWER

<p>Hardware Appl.Part System Solution Pjt SYSTEM LSI</p>	<p>S5L5025 DVDP MAIN BOARD FOR CHINA</p>		
	<p>IN THIS PAGE POWER</p>		
	<p>Sheet 6 of 6</p>	<p>Rev 0.0</p>	<p>Size</p>
	<p>Date: Thursday, November 29, 2007</p>		<p>Custom</p>